



CREO DESIGN

ENGINEERING PROFESSIONAL



You deserve more in your 3D CAD package and Creo Design Engineering Professional delivers. Welcome to the new industry standard, with more capabilities in every seat, out of the box. With Creo Design Engineering Professional, you'll enjoy all the benefits of the Creo Design Engineering package as well as additional capabilities in advanced simulation, generative design, and additive manufacturing.



CORE 3D CAD



The most robust set of 3D CAD capabilities:

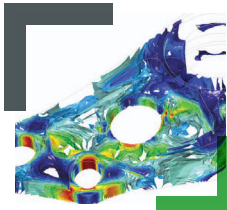
- 3D Part & Assembly Design
- Automatic 2D Drawing Creation
- Parametric & Freestyle Surfacing
- Assembly Management & Performance
- Sheet Metal Design
- Mechanism Design
- Plastic Part Design
- Direct Modeling (Flexible Modeling)
- Additive Manufacturing
- Augmented Reality
- Model-Based Definition
- Multi-Body Design



Creo Design Engineering Professional includes all the capabilities of Creo Design Engineering:

- Fatigue Advisor
- Interface for JT
- Product Insight
- NC Sheetmetal
- Production Machining
- Collaboration Extensions for CATIA V4, CATIA V5 and NX

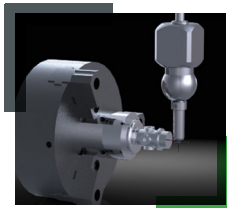
ADDITIONAL CAPABILITIES >>>



Advanced Simulation

Avoid product failures to mitigate risk of warranty, service, repair and liability:

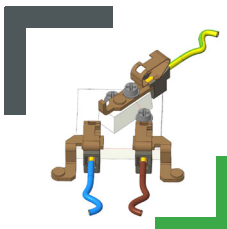
- Materials Nonlinearity (Hyperelasticity and Plasticity)
- Isotropic and Composite Materials
- Dynamic and Prestress Analysis



Complete Machining

Comprehensive capabilities to support advanced NC machining strategies:

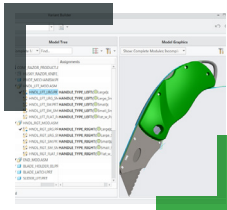
- Includes production machining capabilities in previous packages
- 2.5- to 5-Axis Milling (Adv. machining strategies)
- Support for Mill-Turn and live tooling and multi-task machines synchronization



Clearance and Creepage Analysis

Analyze and optimize models for electrical product safety:

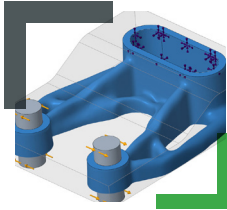
- Automate electrical analysis directly onto the digital model
- Easily identify product safety issues and apply violation tolerances to accurate results



Options Modeler

Create and validate 3D modular products:

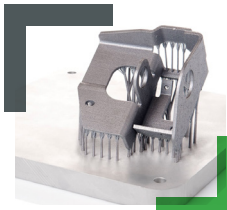
- Interface-based virtual configurable product design
- Unify platform options rules with virtual modeling
- Instantly create virtual product configurations by selecting options



Generative Topology Optimization

Generate designs to meet specific design criteria, goals and objectives:

- Constraint and load definition
- Integrated simulation and analysis driven design
- Faceted results are automatically converted to manufacturable geometry



Additive Manufacturing Advanced

Connect to 3D metal printers and automatically generate 3D metal support structures:

- Includes lattice structure creation and optimization capabilities of previous packages
- 3D metal printer connectivity
- Generate and customize metal support structures

BENEFITS OF ON-PREMISES SUBSCRIPTION

(Included in every Creo Design Package):

ACCESS TO LEARNING CONNECTOR:

Learning Connector gives you access to a comprehensive set of tutorials and playlists, for in-context, bite-size training. Tutorials and playlists are self-paced and available on-demand.

EXTENDED LICENSE BORROWING:

Working remotely just got easier. Borrow floating licenses for up to 180 days - 150 days more than perpetual.

HOME USE LICENSE:

Leave the laptop at work. Every package now includes a home use license of your Creo Design package.

PERFORMANCE ADVISOR:

The Creo Performance Advisor provides a dashboard for your entire Creo installation, allowing you to understand and optimize the performance of your entire Creo environment.

>>> THE CREO ADVANTAGE

Creo is the 3D CAD solution that helps you accelerate product innovation to build better products faster. Easy-to-learn Creo uses a model-based approach to seamlessly take you from the earliest phases of product design to manufacturing and beyond. Combining powerful, proven functionality with new technologies including generative design, real-time simulation, advanced manufacturing, IIoT and augmented reality, Creo helps you iterate faster, reduce costs and improve product quality. Creo is also available as a SaaS product, providing innovative cloud-based tools for real-time collaboration and streamlined license management and deployment. The world of product development moves quickly, and only Creo delivers the transformative tools you need to build competitive advantage and gain market share.

Please visit the [PTC support page](#) for the most up-to-date platform support and system requirements.

© 2024, PTC Inc. (PTC). All rights reserved. Information described herein is furnished for informational use only, is subject to change without notice, and should not be taken as a guarantee, commitment, or offer by PTC. PTC, the PTC logo, and all PTC product names and logos are trademarks or registered trademarks of PTC and/or its subsidiaries in the United States and other countries. All other product or company names are property of their respective owners. The timing of any product release, including any features or functionality, is subject to change at PTC's discretion.

420450_CREO_Design_Premium_Professional_0324