

Here's how we help our customers with their digital transformation journey

VOLKSWAGEN GROUP

Volkswagen Group aims to **consolidate its ALM landscape** using Codebeamer as the future ALM Solution and with a **strategic collaboration** with **PTC**. This collaboration focuses on joint definition and implementation of **Automotive Best Practices and Features** in the future environment.



BMW will replace the legacy IT-Network system with all manual processes by an automated IT-System which **ensures a sustainable BOM Landscape** that can handle the increasing configuration complexity **over the different divisions** (R&D, Sourcing and Production).



Volvo Group has integrated the **digital thread** concept into their **product platform strategy** called **"CAST"** which stands for **"Common Architecture and Shared Technology"**, to address the enormous **scale and complexity** of their configuration **challenge**.

SCHAEFFLER

PTC and **Schaeffler** have been strategic partners since 2022. In close cooperation with **PTC**, Schaeffler wants to **optimize their engineering IT** environment to create an **integrated, agile and consistent IT landscape** for their developers.

Contact our Automotive Expert

Global Lead

Michele Del Mondo
Senior Director, Global Advisor Automotive
mdelmondo@ptc.com
+49 15119548184

For more information about PTC's Automotive Industry Solutions, visit:
www.ptc.com/auto or email automotive-sales@ptc.com.



121 Seaport Blvd, Boston, MA 02210

© 2023, PTC Inc. (PTC). All rights reserved. Information described herein is furnished for informational use only, is subject to change without notice, and should not be taken as a guarantee, commitment, condition or offer by PTC. PTC, the PTC logo, Product & Service Advantage, Creo, Elements/Direct, Windchill, Mathcad and all other PTC product names and logos are trademarks or registered trademarks of PTC and/or its subsidiaries in the United States and other countries. All other product or company names are property of their respective owners. The timing of any product release, including any features or functionality, is subject to change at PTC's discretion.



DIGITAL TRANSFORMS PHYSICAL

PTC at a glance

Pure Play Digital Thread Software company

30 years in business | 30,000 customers | 6,500 employees
96 offices in 28 countries | \$2.5B annual revenue



Digital Thread Continuum

Digital Defines Physical



CAD



- Model Based Definition
- Simulation Led Design Powered by Ansys
- Composites Design
- Additive Manufacturing
- Design for Electrification / Harnesses
- Large Assembly
- Generative Design
- Collaboration

Digital Controls Physical



ALM



- Model Based Systems Engineering
- Agile Engineering
- Quality and Regulatory Management
- Requirements
- Test Case Management
- Simulation
- Software Traceability
- Product Variability
- Product Traceability

Digital Manages Physical



PLM

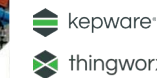


- Global Platform Modularity
- Model Based Engineering
- Model Based Manufacturing
- Model Based Service
- Configuration Management
- Quality and Regulatory Management
- Enterprise Change
- Automation / Systems Integration

Digital Connects Physical



IOT



- Digital Performance Management
- Standard Work Delivery, Execution, and Compliance
- Asset Utilization & Optimization
- Remote, Predictive Service
- OT / IT Data and System Orchestration
- Industrial and Edge Connectivity

Digital Sustains Physical

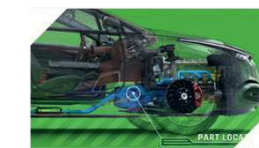


SLM



- Install Base Management
- Service Contract Management
- Spare Parts Optimization
- Condition-based Maintenance
- Work Order Management
- Field Service Dispatch
- Remote Assistance
- Service Instructions
- Technical Documentation

Digital Augments Physical



AR

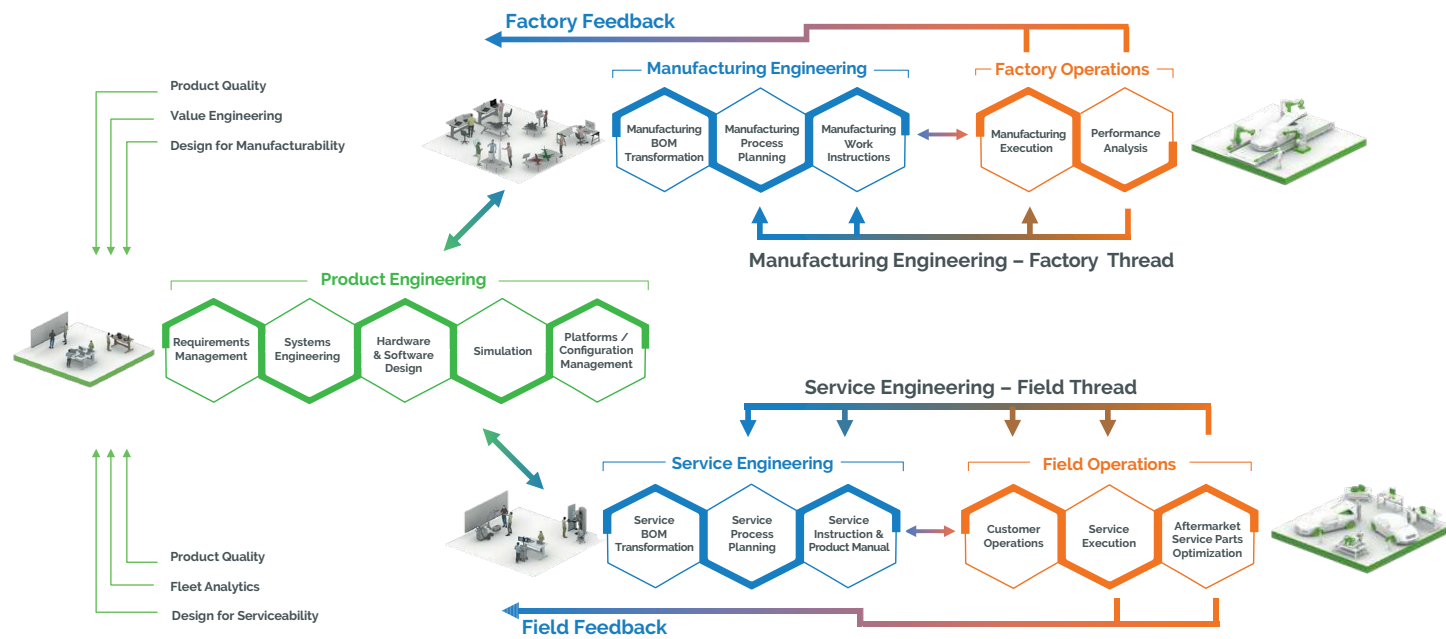


- Digitally Connected Work Instructions
- AI-Enhanced Visual Inspection
- On the Job Training
- Remote Collaboration
- Industrial Metaverse
- Augmented Operator Guidance

End to End Digital Transformation with Modular Open System Architecture (MOSA)

A digital thread strategy weaves its way across a company creating an array of opportunities for business impact. With improved access to data, employees find efficiencies, innovate faster, and improve customer service.

Digital Thread Powers Enterprise Transformation

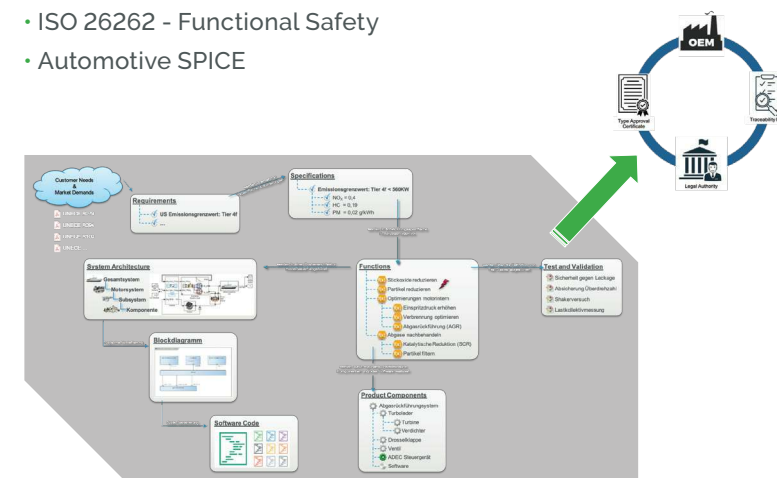


What are the benefits of SaaS?

Software as a Service (SaaS) and Cloud is a cornerstone of digital transformation and PTC has made considerable progress on the execution of our SaaS strategy. PTC is transitioning our products and solutions to a full SaaS environment to help customers focusing on their core business and to increase their agility in digital transformation. While SaaS offers speed and agility it complies as well with high security regulations and scales dynamically according to customer needs.

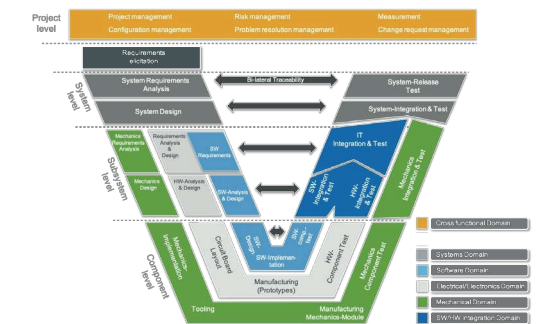
The Need for Digital Product Traceability in Automotive

- UNECE WP.29 (R155/R156)
- ISO/SAE 21434 - Cyber Security Engineering
- ISO 24089 - Software Update Engineering
- ISO 26262 - Functional Safety
- Automotive SPICE



“The automotive industry should follow a robust product development process based on a systems-engineering approach with the goal of designing systems free of unreasonable safety risks, including those from potential cybersecurity threats and vulnerabilities.”

Quelle: NHTSA “Cybersecurity Best Practices for the Safety of Modern Vehicles”



Where you've seen us - Automotive major businesses

| COMMERCIAL VEHICLES | SPORTS / LUXURY VEHICLES | PASSENGER VEHICLES | NEW MARKET PLAYERS | SYSTEM SUPPLIERS | COMPONENT SUPPLIERS |
|---------------------|--------------------------|--------------------|--------------------|------------------|---------------------|
| | | | | | |

PTC in the industry

The Automotive market is a major & important part of PTC's actual business & future strategy with a constantly growing customer base where agility in software development meets the complexity of product platforms.

Why do our customers choose our Digital Thread platforms?

As the worldwide software leader supporting OEM and automotive supplier organizations converging physical and digital worlds, PTC enables actionable intelligence to design, manufacture, and sustain commercial vehicles, passenger cars, bikes and their systems and component.

