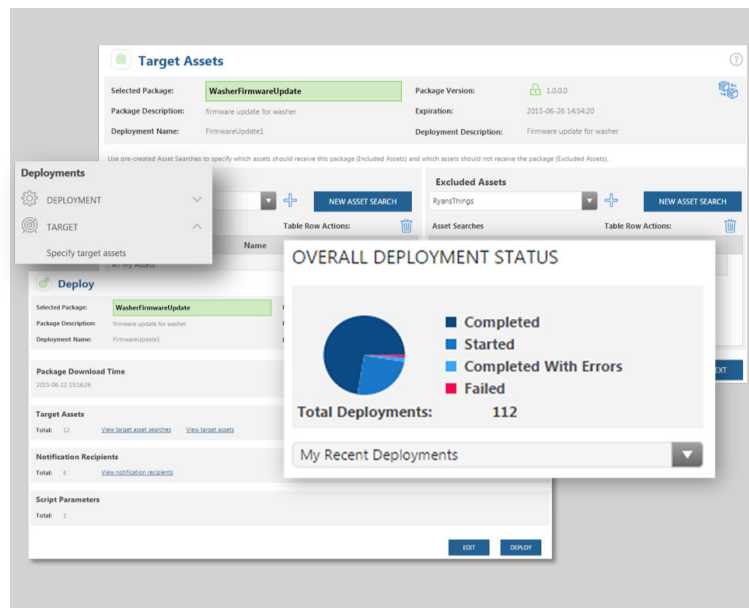
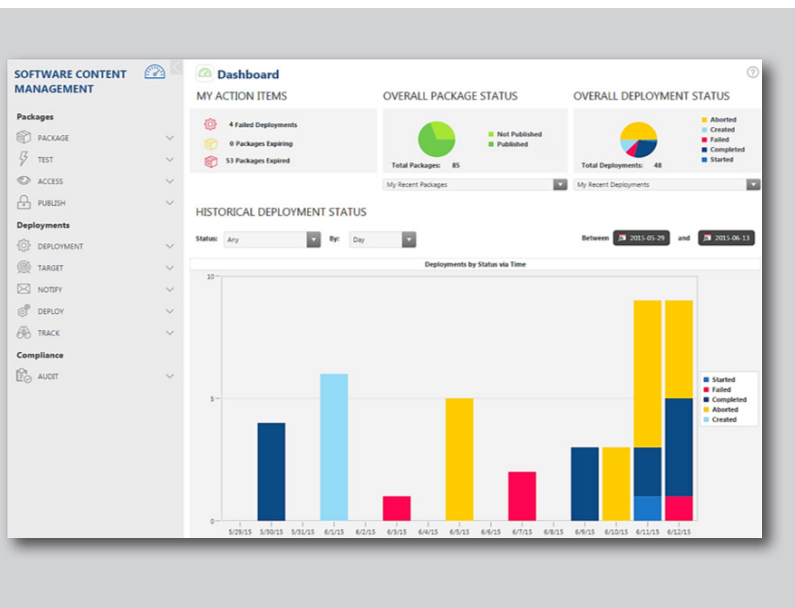


# ThingWorx Software Content Management

ThingWorx Software Content Management provides a secure, reliable interface to remote assets to reduce the complexity of mass software distribution and management. A single, centralized location enables administrators to simplify software and file management processes, ensure all devices are running current software versions, automate software content distribution, and deliver security patches quickly.



## Why ThingWorx Software Content Management?

### Simplified Deployment and Installation

Easily create, package, test, deploy, and manage software packages for distribution

### Centralized Administration

Schedule, track, and record remote distributions from a single user-friendly dashboard

### Optimized Asset Performance

Monitor assets and track distributions with full audit trails to ensure the entire asset population is current

### Integration with Microsoft Azure

Connect to Microsoft Azure IoT Edge devices to update content at scale, simplifying the user experience

## Key Features

ThingWorx Software Content Management (SCM) provides a robust set of features and functions that simplify the administration of software distribution to create a streamlined experience and minimize potential for errors.

### Software Content Process:



#### Software Package Creation

From the SCM dashboard, software content and updates are packaged and configured for distribution. Testing of package deployments can be done with a single connected asset or several, after which the package is published for general use to administrator-designated users and groups.

#### Package Deployment

Target devices for deployment are determined using asset filtering functionality. Software packages can be scheduled for immediate deployment or for a future time and are deployed using ThingWorx Edge technology or the Microsoft Azure IoT Hub Connector for Azure Edge devices. Progress is easily tracked from the dashboard to ensure completion.

#### Content and Distribution Management

Centralized management provides real-time visibility of entire population of connected devices to ensure revision levels are current and enable targeted updates. Search and audit tools enable distribution details to be viewed in real-time or historically, to track and record software deployments and to use in future planning.

#### User and Data Security

SCM includes patented firewall-friendly communications, data security, and user authentication mechanisms. All packages are sent compressed and encrypted using Transport Layer Security (TSL) technology.

#### User Authentication

Administrators can specify who can create or use packages. Packages do not become available to the public until published by the creator.

#### Audit Trail

Every action and cause is recorded to an audit log, satisfying reporting, training, business improvement, regulatory, and non-repudiation requirements.

#### Content Management APIs

APIs are used to customize processes that integrate third-party applications. Supported APIs include: upload package, create package, create deployment, and monitor/audit delivery.

### About PTC (NASDAQ: PTC)

PTC unleashes industrial innovation with award-winning, market-proven solutions that enable companies to differentiate their products and services, improve operational excellence, and increase workforce productivity. With PTC, and its partner ecosystem, manufacturers can capitalize on the promise of today's new technology to drive digital transformation.

