



# TOP ENHANCEMENTS CREO 12

## DELIVER YOUR BEST DESIGNS IN LESS TIME

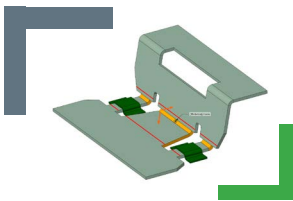
Creo 12 provides industry-leading composite capabilities, expanded Model-Based Definition, improved real-time simulation, and streamlined manufacturing workflows. Creo helps manufacturers get the most value from their CAD system, with integrated design, simulation, and manufacturing capabilities.

[REQUEST A DEMO >>](#)

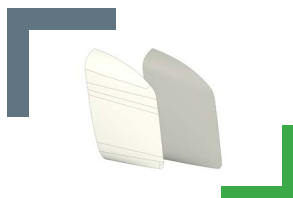


## PRODUCTIVITY & USABILITY

Creo 12 delivers an intuitive interface coupled with customer-inspired streamlined workflows, helping you deliver your best designs in less time.



- Feature Presets allow users to set their own default, with drop down menu of standardized feature choices.
- "What's New in Creo 12" highlights and enhanced tool tips.
- Create a flat assembly from a multibody part.

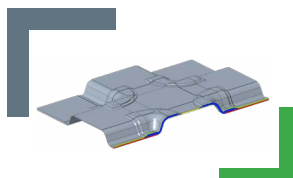


- Model tree enhancements.
- Sheet metal fully dependent mirror and enhanced join command.
- Approximate surface – reduces geometry complexity.
- Enhanced Enclosure Volume – move to footer of model tree.

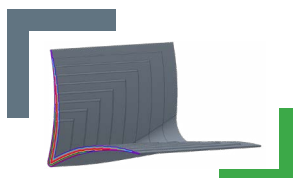


## DESIGN FOR COMPOSITES

Creo 12 delivers market-leading fidelity and accuracy in advanced composite structure design, with innovative tools that enable engineers to efficiently design, simulate, and manufacture composite parts.



- Accurately generate a solid geometry from composite layers - faster and more robust.
- Create an associative manufacturing reference model – Defines manufacturing plans from engineering model. Engineering changes are associatively reflected in manufacturing plans.

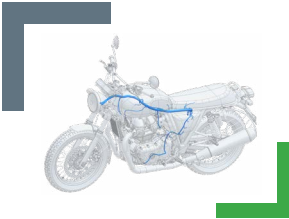


- Merge plies from zones – neighboring zones can be merged with common material and orientation.



## DESIGN FOR ELECTRIFICATION

Creo is an excellent choice for circuit design and harness manufacturing, with a comprehensive suite that streamlines the entire design process, from schematic capture to PCB layout and wire harness design.

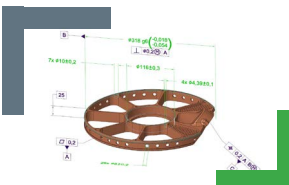


- Work on a harness as an assembly (Spools, wiring, terminators, etc.) – Collaboration is easier with an assembly than on a single part.
- Improved import control for ECAD data.

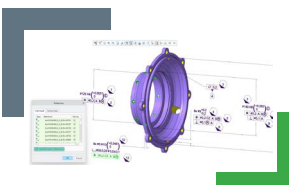


## MODEL-BASED DEFINITION

With a model-centric approach, Creo ensures that all product information is accurately defined within the 3D model, providing the right information to the right person at the right time.



- Enhanced neutral format file export capabilities - STEP AP242 export, edition 3 and 3D PDF export (available in future maintenance release).
- Datum Reference Features (DRF) and intent surfaces now available in GD&T Advisors.

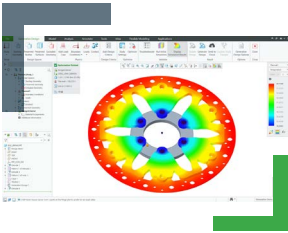


- Improved reuse of individual annotations.



## SIMULATION-DRIVEN DESIGN AND GENERATIVE DESIGN

Creo simulation-driven design helps engineers iterate and optimize designs early in the design process, with award-winning generative design and real-time Ansys simulation tools.

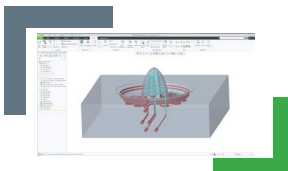


- Thermal optimization (for heat dissipation) in addition to structural and modal.
- Ansys solver updates (25R1).
- Simplified and streamlined results in CSL and CAS.
- Bolted structures for both CSL & CAS.



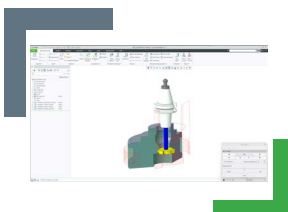
## MANUFACTURING (ADDITIVE AND SUBTRACTIVE)

Creo is the ideal choice for designing for additive and subtractive manufacturing, making it easy for you to deliver high-quality manufacturable products.



### Additive Manufacturing:

- Localized Seed Points in stochastic, for greater control of randomized lattices.
- Enhanced lattice connection – connection of two or more lattice geometries.



### Subtractive Manufacturing

- High-Speed Milling (HSM) undercut machining enables greater flexibility with 3-axis machining.

Creo 12 offers a wealth of improvements to help you and your team improve productivity, quality, and innovation. From productivity tools that you will use every day, to simulation-driven design tools and innovative composite design tools, Creo provides the capabilities you need to help you deliver your best designs in less time.

[As the outright Innovation leader in ABI Research's](#) latest competitive assessment, Creo has been recognized to have robust set of CAE/CAM capabilities, intuitive model-based offerings, and the integration of disruptive technologies like simulation.



**Creo is the 3D CAD solution** that helps you accelerate product innovation to build better products faster.

Easy-to-learn Creo uses a model-based approach to seamlessly take you from the earliest phases of product design to manufacturing and beyond. Combining powerful, proven functionality with new technologies including generative design, real-time simulation, advanced manufacturing, IIoT and augmented reality, Creo helps you iterate faster, reduce costs and improve product quality. Creo is also available as a SaaS product, providing innovative cloud-based tools for real-time collaboration and streamlined license management and deployment. The world of product development moves quickly, and only Creo delivers the transformative tools you need to build competitive advantage and gain market share.

Please visit the [PTC support page](#) for the most up-to-date platform support and system requirements.

© 2025, PTC Inc. (PTC). All rights reserved. Information described herein is furnished for informational use only, is subject to change without notice, and should not be taken as a guarantee, commitment, or offer by PTC. PTC, the PTC logo, and all PTC product names and logos are trademarks or registered trademarks of PTC and/or its subsidiaries in the United States and other countries. All other product or company names are property of their respective owners. The timing of any product release, including any features or functionality, is subject to change at PTC's discretion.  
661972 Creo 12: Top Enhancements\_0425