



SEASON SUMMARY

PTC NEXT

GO BEYOND WHAT'S POSSIBLE

SPRING 2026

FORWARD LOOKING STATEMENTS

The information in these slides regarding possible future releases is not intended to be part of any commercial offer and is provided solely for informational purposes. Such information does not in any way constitute commitments, promises or legal obligations upon which customers may or should rely. The development, release and timing of any features or functionality described for PTC products remains subject to change at any time at PTC's sole discretion. In no event shall PTC be liable to customers for failure to adhere to any such roadmap and/or to produce or deliver any functionality described in these slides. A customer's decision to purchase any PTC software products must in all cases be based upon the current functionality of the relevant products and not upon any potential future functionality and/or features described in the product roadmap.

PTC NEXT – ONE SEASON. ONE PROGRAM. ONE PLACE.

Two seasons per year — each anchored by a live launch event and extended through AI in Focus and an on-demand platform — so customers stay connected to PTC's product releases and updates.

What PTC NEXT delivers:

New Product Innovation

First look at what's shipping across all products

Easy access to new Innovation

Launch Kits & Videos available on-demand

How it solves your challenges

Innovation mapped to real customer problems

Spring Season

Launch Time: June

Fall Season

Launch Time: December

AI in Focus

Ongoing

PRODUCT INNOVATION BUILT FOR THE INTELLIGENT PRODUCT LIFECYCLE

New products, new capabilities, new connectors to build the Intelligent Product Lifecycle powered by a trusted product data foundation, fueled by AI and delivered through our Intelligent Solutions.



SPRING 2026 SEASON PRODUCT INNOVATION ANNOUNCED AT PTC NEXT CHICAGO

2
new
products

10
new connectors
& integrations

1
new
AI platform

12
new AI agents
& assistants

100+
new features &
enhancements



Powered by
Product Data



Connected
through openness

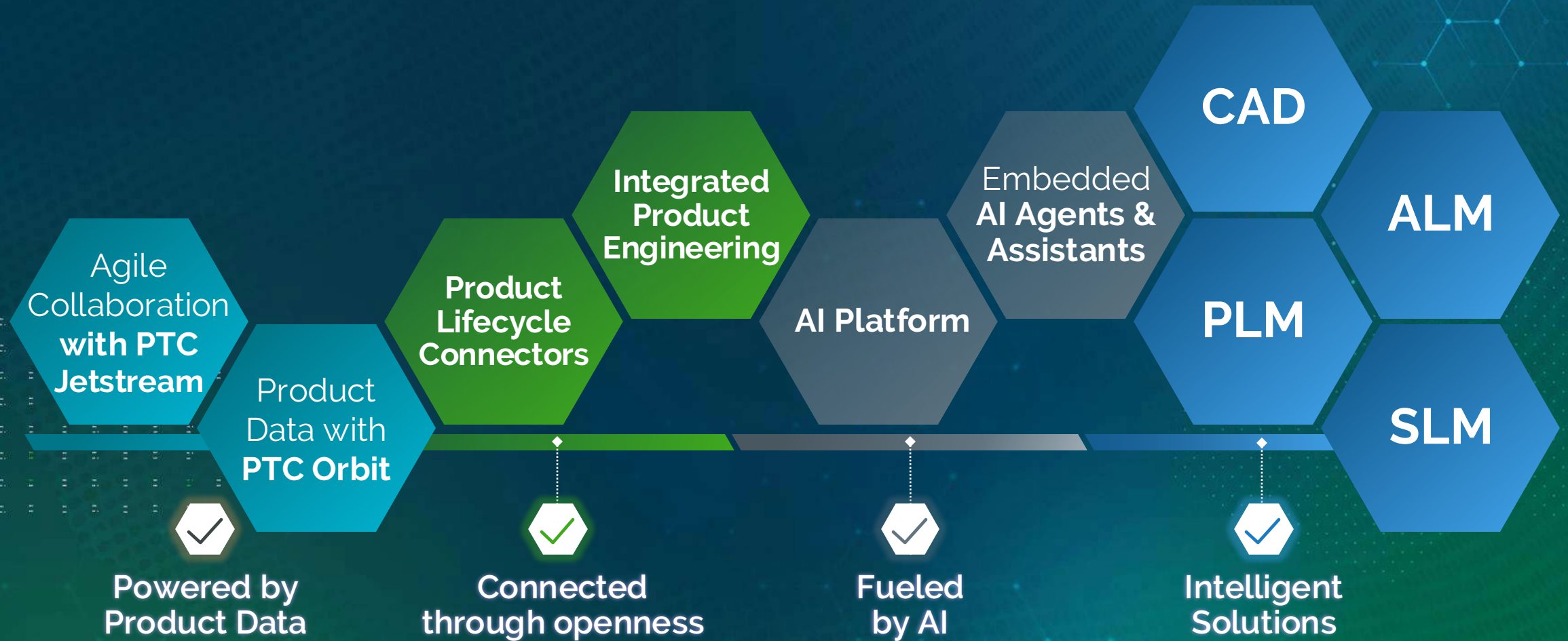


Fueled
by AI



Intelligent
Solutions

SPRING 2026 SEASON PRODUCT INNOVATION ANNOUNCED AT PTC NEXT CHICAGO



PRODUCT INNOVATION HIGHLIGHTS

Key Updates
per Product

Impact of
New Innovation

Future
Investment Areas

 codebeamer®

 creo®

 windchill®

 servicemax®

 onshape®

 arena®

 servigistics®

ALM - Codebeamer

Spring 2026 — What's New
Speed meets control. Fueled by AI.

24/7

AI-powered
assistance

1

Connected product
lifecycle

100%

Traceability across
the Lifecycle



1 Codebeamer AI – Assistants, Customers hosted & semantic search

Work smarter across the lifecycle with AI-powered assistance — improving quality, accelerating key tasks, and delivering faster insights with trusted, meaningful search.

2 Configuration Management – Streams & Delta Merge

Bring changes from different product versions back together with confidence — reducing conflict, rework, and risk through controlled, efficient merging.

3 Product Line Engineering – Coevolution

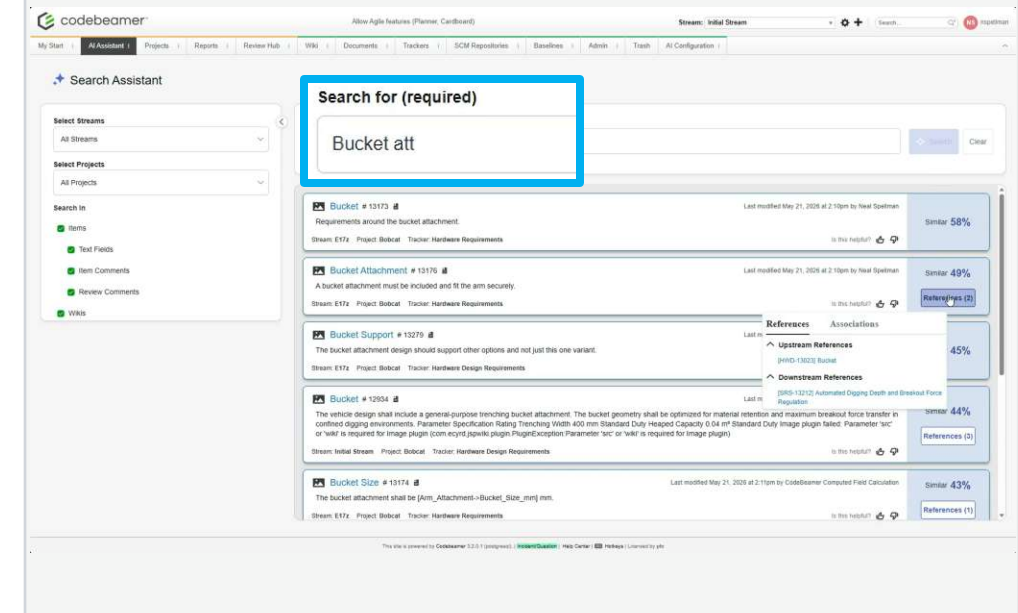
Keep product development aligned as systems, software, and variants evolve together — eliminating disconnected changes and reducing integration complexity.



4 IPE – Digital Product Traceability

Connect software and hardware across the lifecycle with unified product traceability — ensuring every change is visible, connected, and validated from requirements through delivery.

Get instant answers with Codebeamer AI Assistants—right where you work.



Learn more →

ptc.com/en/products/codebeamer/whats-new

FUTURE ALM INVESTMENT AREAS



Integrated Product Engineering (IPE): Cross-functional integrations for digital thread traceability, change collaboration, link viewing, impact analysis & product architectures



Codebeamer AI: Build high-value AI Agents to help customers maximize Requirements Quality, Test Case coverage, Traceability, and Reuse.



Configuration Management with integrated PLE: Product Line Engineering based on scalable configuration management supports reuse and variability.



Industry Solutions with Market Leading Features: Best-in-class features and industry best practice-driven solutions with tool qualification and certifications



Improved UX: Streamline user interaction, harmonize with PTC Design, modernize UI technology, make working with Codebeamer a delightful experience.



Enterprise Application Infrastructure, Quality, and SaaS: Meet customer scalability and performance needs, increase product quality, and optimize Codebeamer+

PLM - Windchill

Spring 2026 — What's New
A New Era of Windchill Starts Now

1

Connected product
data platform

15+

New capabilities

100%

Aligned to how
manufacturers work



1

Next Gen UI/UX

Redesigned homepage, streamlined navigation, and rebuilt BOM reporting deliver a modern, intuitive experience.

2

AI for PLM

AI Assistant and AI Parts Rationalization bring natural language search, duplicate detection, and intelligent insights into PLM workflows.

3

SaaS

Windchill+ delivers cloud-native PLM with predictable upgrades, scalable infrastructure, and built-in automation for faster time-to-value. Windchill+ is FedRAMP authorized.

4

Enterprise Collaboration

Introducing PTC Jetstream, a new product for expanding access to your enterprise data, specifically around enabling collaboration on your product data within your own organization and externally with your partners

5

Mfg & Service Engineering

BOM management capabilities, manufacturing process planning and service engineering bridge the gap from design to production and the field.

6

Windchill/Onshape

Unified data management across Windchill and Onshape connects distributed teams and broadens access to product data.

7

Integrated Product Engineering

Strengthened digital thread connects PLM and ALM for end-to-end traceability across the product lifecycle.

8

Updated Release Model

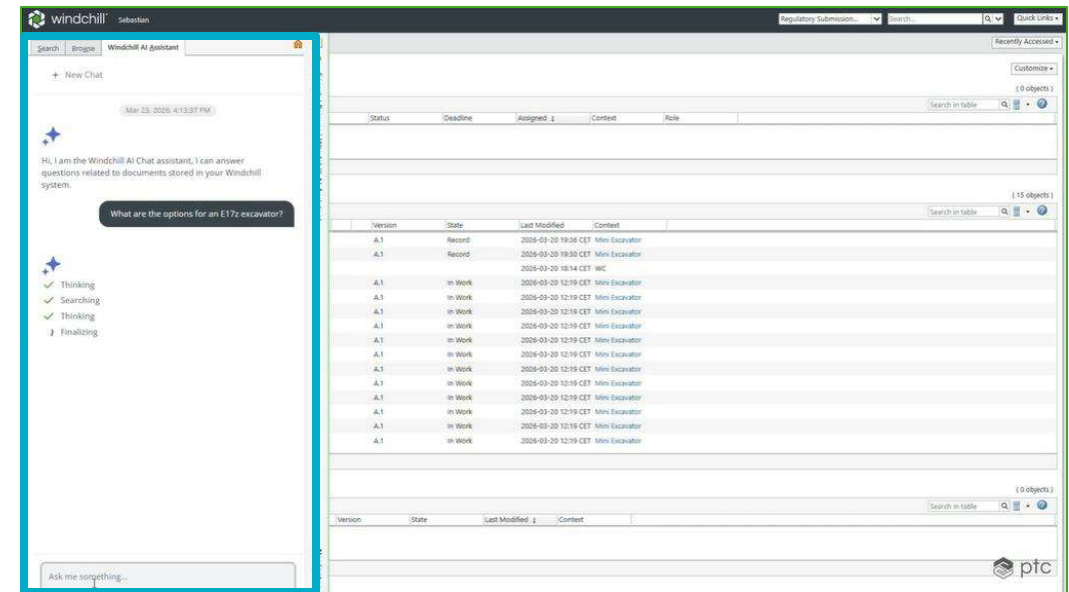
New annual release cadence with long-term support ensures access to the latest capabilities while minimizing operational disruption.

9

Architecture and Platform Modernization

Performance and scalability improvements support enterprise-scale deployments with faster search and visualization.

Assess the Windchill AI Assistant embedded
in Windchill to ask your question.



Learn more → www.ptc.com/en/products/windchill/whats-new

FUTURE PLM INVESTMENT AREAS



AI for PLM: Using AI to help accelerate velocity of product development teams and drive value to the enterprise



Modernized PLM UI/UX: Delivering modern web experiences for simplified user engagement and adoption; role/task-based user experiences to enable access to product data across the enterprise



Windchill Extension Framework: Develop a standard, unified framework for PTC, partners, & customers to implement and deliver extensions to Windchill capabilities including AI asynchronously from Windchill releases



Enterprise Collaboration: Provide a scalable, centralized collaboration portal for bi-directional, real-time communication & collaboration between OEMs and suppliers



Manufacturing & Service Planning: Process Planning, eBOM – xBOM transformation, & bi-directional communication with execution systems (ERP, MES, SLM)



Integrated Product Engineering: Provide integrations to position Codebeamer, Pure::Variants, & Windchill as closely aligned & logical complements to enable software-defined products



SaaS: Windchill+ the same best-in-class PLM, delivered as SaaS. Including simplifying operations of Windchill for everyone. Vertical specific offerings for Med Tech and FA&D

CAD - Creo

Spring 2026 — What's New

Design better products in less time without compromise.

70%

faster assembly retrieval

200+

new capabilities

60X

Faster calculation of composite transitions



1

AI for CAD – Creo AI Assistant

Get model-agnostic advice, model-aware assistance, and engineering-level automation for productivity gains within the Creo engineering workflow.

2

User Productivity

User interface enhancements and performance gains in everyday operations minimize repetitive tasks and help engineers deliver their best designs in less time.

3

Model-Based Definition

Customizable 3D PDF templates and GD&T Advisor enhancements improve product quality and ensure compliance with global product standards.

4

Composite Design

Copy/paste for design reuse and upgraded ply transition calculations help designers deliver accurate composite geometry with unmatched speed.

5

Simulation-Driven Design

Assembly-level generative design optimization and expanded CSL/CAS tools improve product quality, reduce costs, and help teams deliver designs faster.

6

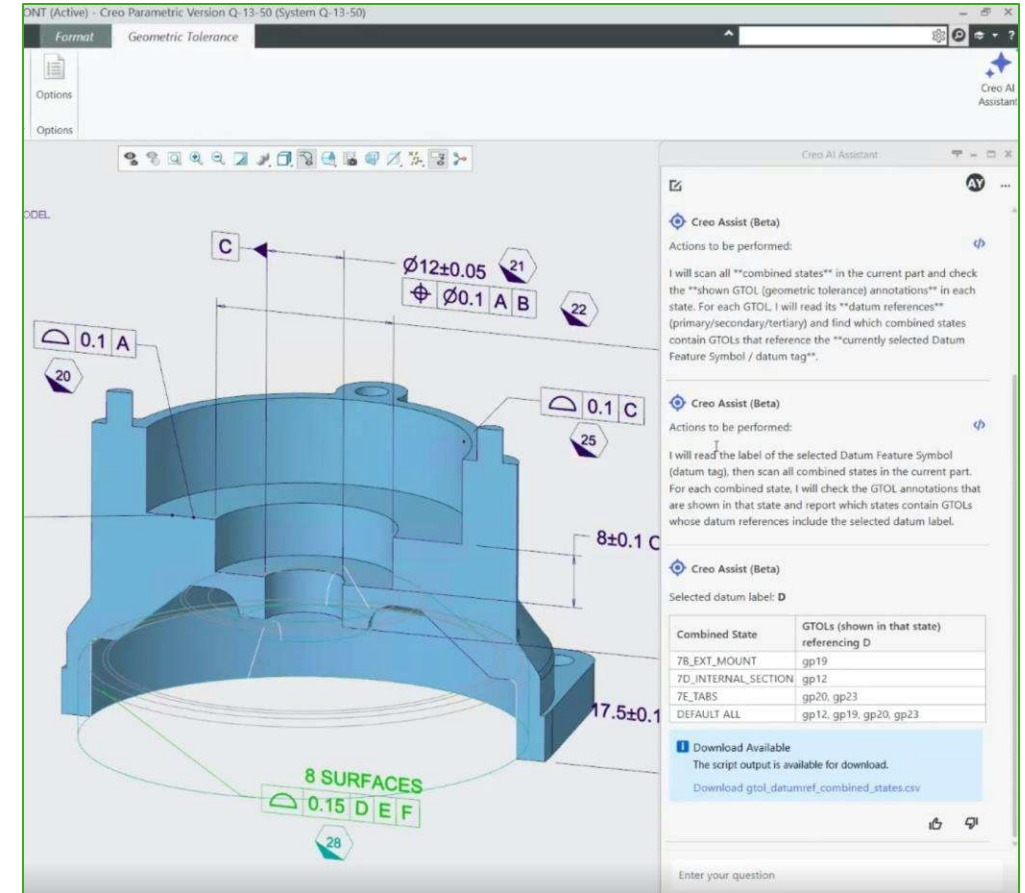
Advanced Manufacturing

5-axis swarf milling, a new UX for NC, and conformal cooling channel connections deliver higher quality products in less time when connecting CAD/CAM in Creo.

7

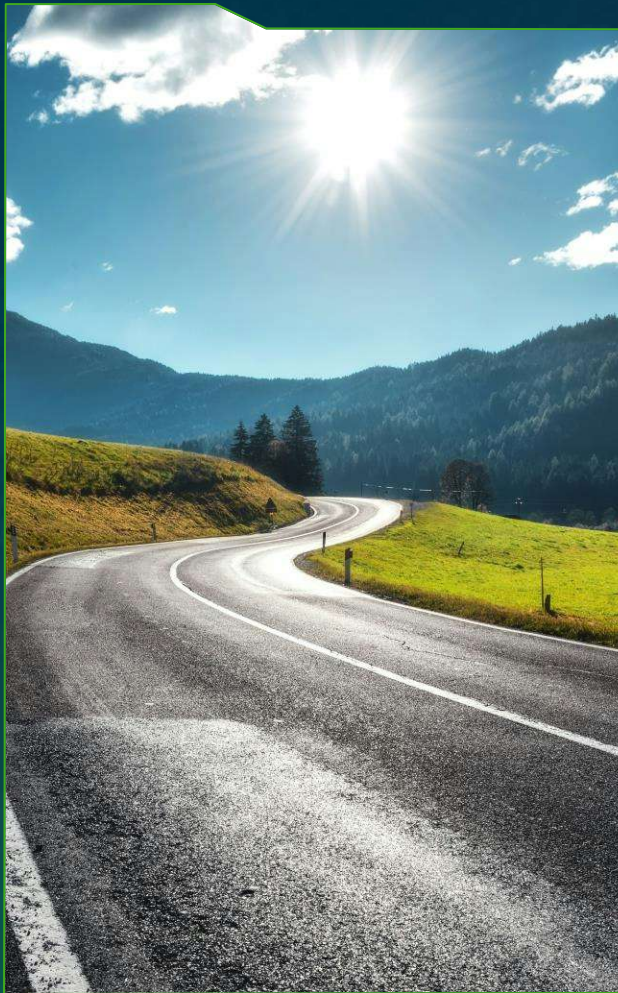
Design for Electrification

Harnesses as assemblies, space-claim workflows, and improved standards support help teams design for electrical components earlier to reduce late-stage errors.



Learn more → www.ptc.com/Creo13

FUTURE CAD INVESTMENT AREAS



User Productivity: Enhancements in capabilities, optimized performance and integrated AI-Driven design.



MBD: Compliance / validation with latest GD&T standards, machine-readable annotations, and 3D data exchange formats (AP242 STEP, JT and 3D PDF).



Simulation Driven Design: Speed and accuracy of real-time simulations and expanded generative design capabilities.



Design for Manufacturing: High-speed machining capabilities, enhanced toolpath UI, mold tool improvements and expanded additive manufacturing capabilities / controls.



Composite Design: Fully associative design and manufacture of highly complex 3D composite structures



Design for Electrification: Expanded capabilities for electrification of products, including collaborative development of complex harnesses and ECAD collaboration



SaaS: Enhanced collaboration behavior and lightweight PDM offering

SLM - ServiceMax

Spring 2026 — What's New
Service confidence through intelligent controls

-25%

Decrease in operational costs

20+

New Capabilities

85%+

First-time fix rates



1 Trusted AI

Intelligent controls — AI Skills and expanded knowledge access—ensure trusted data strengthens planning and drives improved decision making.

2 Adaptive Scheduling

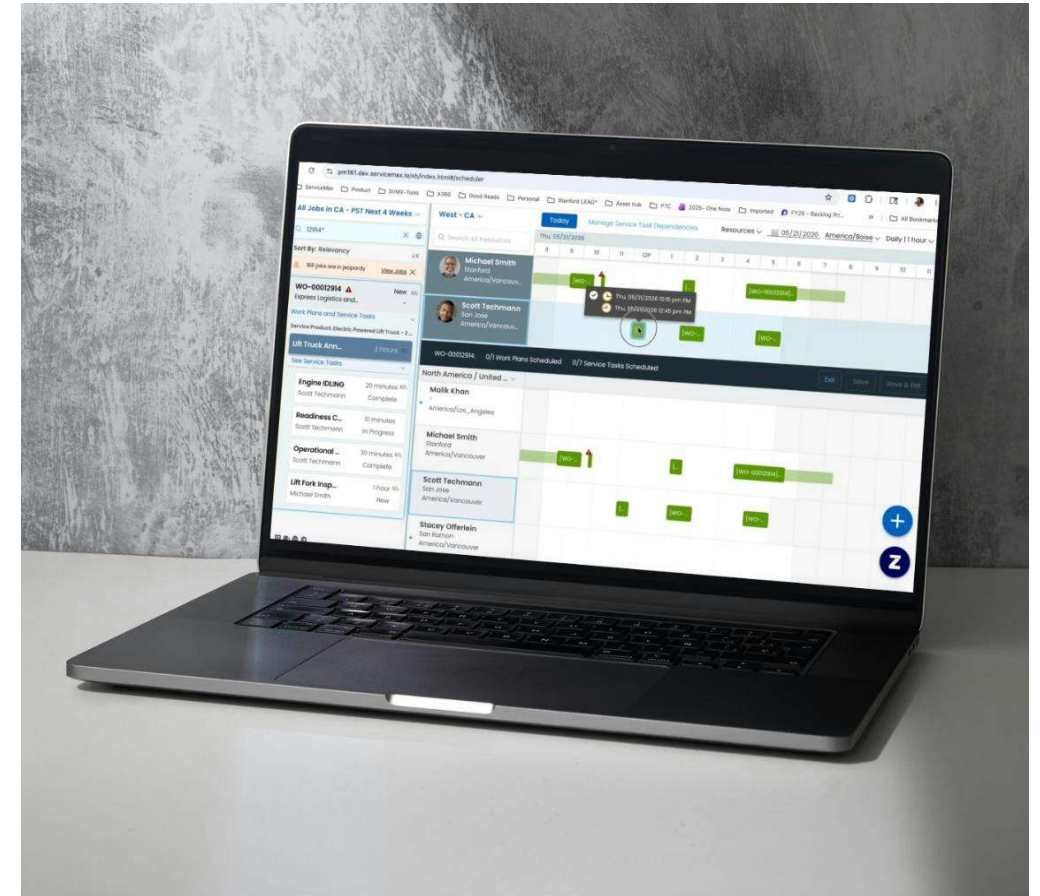
New AI console and enhancements in current day optimization (CDO) bring dispatchers control over daily disruptions and allow greater automation for productive scheduling.

3 Consistent Service Delivery

Work Plans and Task dependencies intelligently control for costly variability in work across field teams — ensuring work is done as productively as possible.

4 Holistic Repair

Picking, fitting, and returning the correct parts improve with intelligent controls for options-based parts filtering and automated return order generation—closing the loop on repair and ensuring costly parts are managed well.



Learn more → www.ptc.com/en/products/servicemax/whats-new

FUTURE SERVICEMAX INVESTMENT AREAS



ServiceMax AI: AI driven data capture and targeted information delivery, so your users spend less time on admin and more time helping customers.



Orchestrate Complexity: Enabling tasks with constraints around Parts, Skills and Tools for complex multi-resourced projects.



Master the Bench: Work prioritization and configurability for Depot Repair and Workbench testing



Schedule with Intent: Utilizing Agents and AI Actions to drive outcome driven scheduling.



Work the Location: Enable organizations to tackle Location/Site Centric work through the Go App.



Service Intelligence: Introducing PTC Orbit as the native AI intelligence layer for Reasoning, Maintenance Strategy, Forecasting and Planning, and more.

SLM - Servigistics

Spring 2026 — What's New

Servigistics is the intelligence behind equipment uptime.

100%

Customer-aligned
Development Priorities

29

Purpose-built AI/ML
Capabilities

98

Client-requested
Improvements



1 User Productivity

Enhancements in planner productivity, decision automation, explainable AI, and integrated AI-driven workflows.

2 AI Assistant

Context-aware conversational AI trained on Servigistics documentation, configuration, and operational data to accelerate planning and troubleshooting.

3 Self-Healing, Autonomous Planning

Agentic AI capabilities for order approval, work queue management, exception handling, and closed-loop optimization.

4 Multi-Echelon Optimization

Expanded stochastic optimization capabilities across global service networks, balancing service levels, inventory, uptime, and cost. Widen the competitive gap.

5 SIOP & Consensus Planning

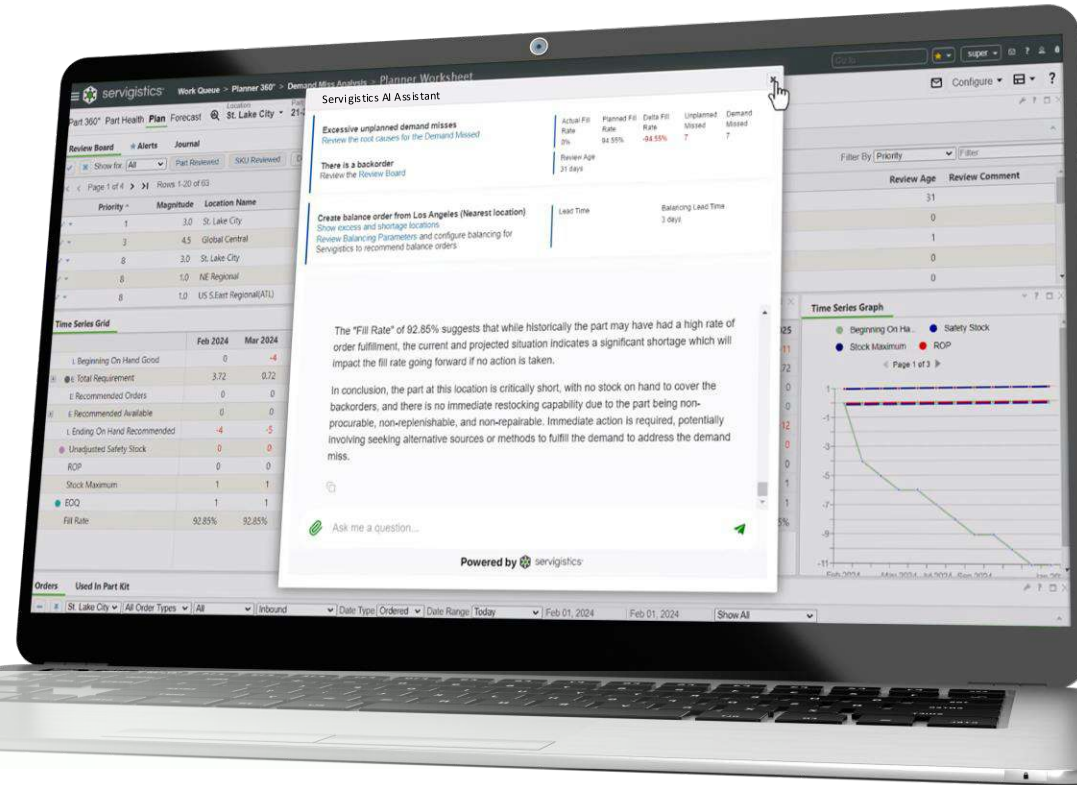
Integrated Service SIOP capabilities enabling cross-functional alignment between service, supply chain, finance, and operations.

6 SaaS & Platform Modernization

Expanded cloud-native SaaS capabilities, improved scalability, FedRAMP-ready security, enhanced integrations, and streamlined user experiences.

7 Machine Learning

Advanced ML models continuously improve forecast accuracy by identifying complex demand patterns, causal relationships, and changing service behaviors.



Learn more → PTC.com/ServiceParts

FUTURE SERVIGISTICS INVESTMENT AREAS



User Productivity: Enhancements in planner productivity, decision automation, explainable AI, and integrated AI-driven workflows.



AI Assistant: Context-aware conversational AI trained on Servigistics documentation, configuration, and operational data to accelerate planning and troubleshooting.



Autonomous Planning: Agentic AI capabilities for order approval, work queue management, exception handling, and closed-loop optimization.



Multi-Echelon Optimization: Expanded stochastic optimization capabilities across global service networks, balancing service levels, inventory, uptime, and cost. Widen the competitive gap.



SIOp & Consensus Planning: Integrated Service SIOp capabilities enabling cross-functional alignment between service, supply chain, finance, and operations.



Agentic AI: Autonomous AI agents collaboratively optimize forecasting, inventory, replenishment, pricing, and operational workflows to accelerate decision-making, improve resiliency, and scale service supply chain intelligence.



SaaS & Platform Modernization: Expanded cloud-native SaaS capabilities, improved scalability, FedRAMP-ready security, enhanced integrations, and streamlined user experiences.

1

AI Advancements

AI Advisor built into the design workspace, delivering real-time, context aware design and workflow feedback. Stay tuned for more updates in this space.

2

Next Generation Model-Based Definition (MBD)

Cloud-native MBD creates a complete digital definition of a product by embedding semantic, machine-readable PMI directly into the 3D model. A single source of truth is established across design and manufacturing.

3

Robotics Simulation Capabilities

Onshape to NVIDIA Isaac Sim Workflow delivers simulation-ready robot designs that update automatically as designs change + a new URDF export option.

4

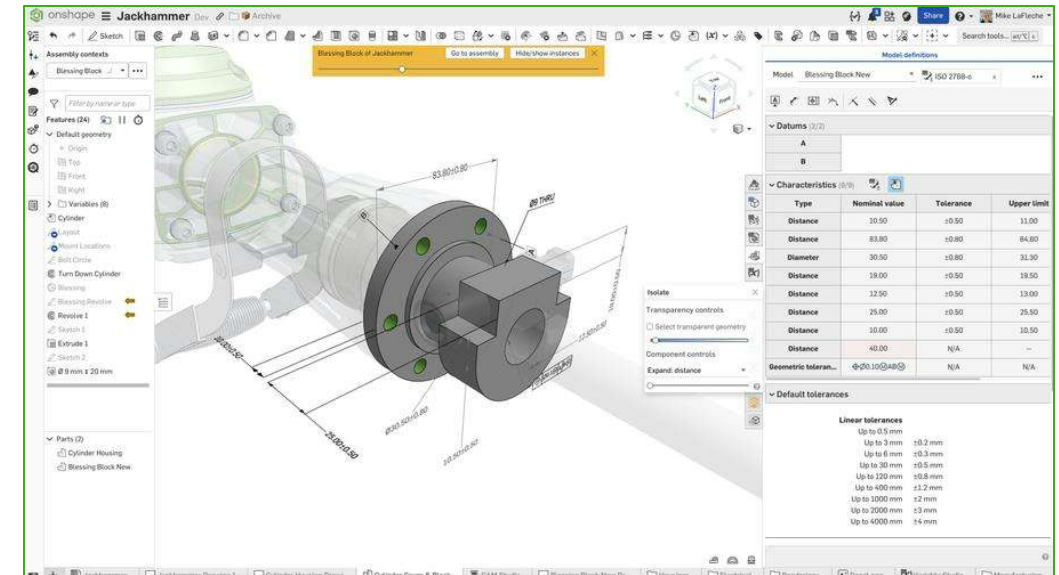
Cloud Connected ECAD-MCAD Design

Instant cloud-to-cloud synchronization of mechanical and electrical design data with the new Altium integration & native PCB Studio updates.

5

ITAR/EAR Compliance Support

Onshape Government is tailored to help companies meet compliance requirements for governmental applications; now also available to PTC's Startup program participants.



Learn more → onshape.com/en/resource-center/what-is-new/

58%

Faster ECO

46%

Scrap reduction

\$300K

Annual IT Cost Savings

1

Data-Driven Decision-Making

AI-assisted advanced search answers natural language queries. Experienced, new, and infrequent users will:

- Find accurate, up-to-date product and quality data to make better decisions
- Reduce the time spent searching to reach the results needed

2

Accelerate On-Boarding and Adoption

New search results table experience has a familiar look and feel, so all users can:

- Personalize views by resizing, rearranging, pinning, sorting, and saving columns
- Navigate and manage search results more efficiently

3

Electronic Component Risk Management

With SCI component discovery and replacement, users can review specifications, PCNs, and real-time risk indicators **before** importing the parts to improve component reuse

- Identify qualified alternatives based on manufacturer part number or form-fit-function criteria
- Import and apply alternatives directly in Arena to replace components or add new sources

4

Data-driven Decision Making

Analytics support for GovCloud provides enhanced reporting and control for

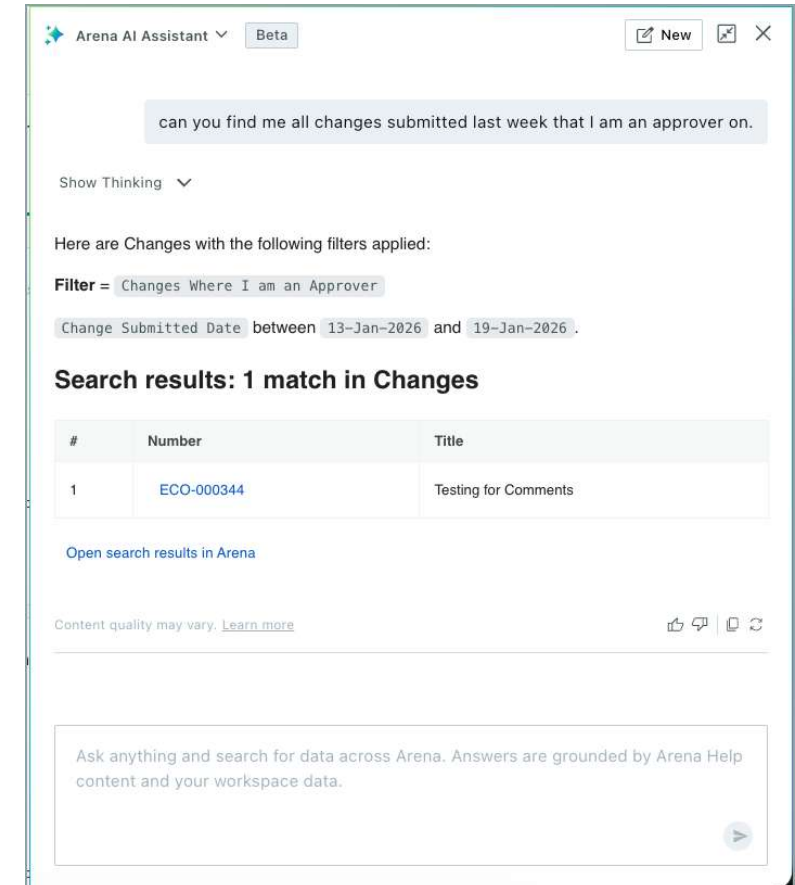
- Out-of-the-box dashboards for items, changes, suppliers, and training
- Drill down to understand trends and root causes
- Share insights via scheduled reports (CSV, PDF)

5

Improve quality, operations, and engineering communications

Write with emphasis to create easy-to-read rich text in Arena form fields

- Support formatted text, structured tables, and embedded images in request forms



Learn more → <https://www.arenasolutions.com/secure/arena-2026-1-quick-tour.pdf>

PTC NEXT ON-DEMAND

YOUR ALWAYS-ON HUB FOR PRODUCT INNOVATION

CREATED
EXCLUSIVELY FOR
ON-DEMAND

40+

Original episodes

AI IN FOCUS
SERIES

11

AI episodes



RECORDED LIVE AT
PTC NEXT CHICAGO

8+

Keynote sessions

PTC NEXT

PTC NEXT ON-DEMAND

Spring 2026 — Complete Video Catalog

RECORDED LIVE AT PTC NEXT

CEO Vision ▪ CPO Strategy ▪ GM Product Sessions ▪ AI Keynote ▪ Customer Spotlight

AI IN FOCUS SERIES

Executive video series on AI strategy and product-level AI innovation

SPRING 26 HIGHLIGHTS

Product Highlights and deep dives — purpose-built content across every product

WINDCHILL (9)

★ Highlights: Windchill

- In Focus: Next Gen - UI/UX
- In Focus: Windchill+
- In Focus: Manufacturing Engineering
- In Focus: Windchill/Onshape
- In Focus: Enterprise Collaboration
- In Focus: Integrated Product Engineering
- In Focus: Windchill AI
- In Focus: Product Visualizations

ARENA (5)

★ Highlights: Arena

- In Focus: AI Comparison & Workspace Search
- In Focus: Automations & SCI Component Risk
- In Focus: AI File Insights & SCI Compliance
- In Focus: Item Automation & Workflow Builder

CODEBEAMER (4)

★ Highlights: Codebeamer

- In Focus: AI
- In Focus: Delta Merge
- In Focus: PLE / PV

CREO (6)

★ Highlights: Creo Overview & Roadmap

- In Focus: Creo AI Assistant
- In Focus: User Productivity
- In Focus: MBD & Electrification
- In Focus: Composite Design & Adv. Mfg
- In Focus: Simulation Driven Design

ONSHAPE (5)

★ Highlights: Onshape

- In Focus: MBD
- In Focus: Robotics
- In Focus: AI
- In Focus: Onshape Windchill Connector

SERVICEMAX (5)

★ Highlights: ServiceMax

- In Focus: Trusted AI
- In Focus: Adaptive Scheduling
- In Focus: Consistent Service Delivery
- In Focus: Holistic Repair

SERVIGISTICS (5)

★ Highlights: Servigistics

- Focus: AI Assistant
- In Focus: AI/ML-based Forecasting
- In Focus: SIOP
- In Focus: Agentic In AI





PTC NEXT

GO BEYOND WHAT'S POSSIBLE

ARM.02 | 001 77 771

02