

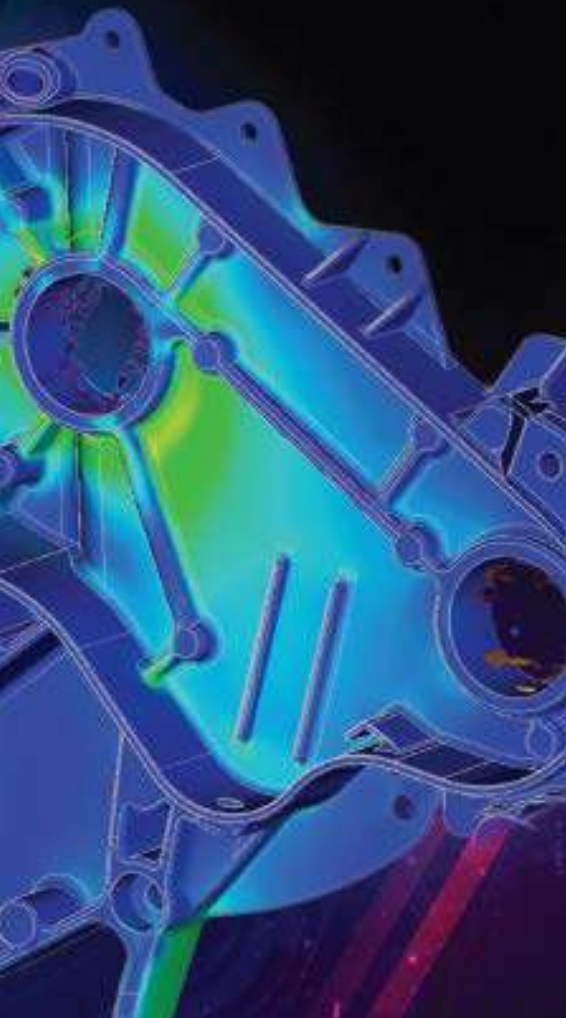


CREO DESIGN PACKAGES:
YOUR PRODUCTS MADE BETTER





IF YOUR SOFTWARE
ISN'T UP TO SPEED,
YOUR COMPANY MAY
BE LOSING OUT TO
THE COMPETITION.



WHAT ARE THE COMMON EXCUSES YOU HEAR FOR HOLDING ONTO OUTDATED SOFTWARE?



- It still works. Why replace it?
- We're too busy.
- You'll burst the budget.
- No.

Okay, maybe the fourth one isn't an excuse, but it usually accompanies the top three. Too bad because the product development landscape is changing fast. When you adopt the most current versions of Creo, you get:

- Tomorrow's solutions today—game-changing tools like augmented reality, real-time simulation, and generative design.
- The latest security features to avoid cyber-attacks.
- Updated interfaces that are easier to use and make your work easier.





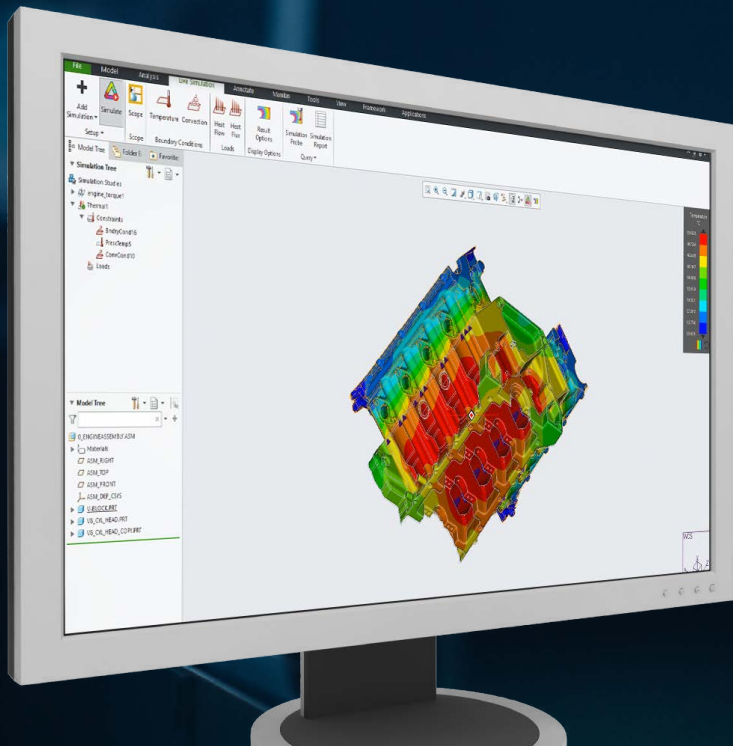
INTRODUCING CREO DESIGN PACKAGES

Keeping up with technology can be a headache—and expensive. The good news is that Creo is available in a variety of CAD packages.

Subscribe to the package that meets your needs today. All offer Creo with the essential tools everybody needs to produce professional 3D CAD work. Plus, every subscription comes with premium support.

HELP CHOOSING YOUR PACKAGE

The following pages can help you choose the best package for your business. Read on to discover the most helpful capabilities for anyone in product design.





SELECT YOUR PACKAGE

	DESIGN Essentials	DESIGN Advanced	DESIGN Advanced Professional	DESIGN Engineering	DESIGN Engineering Professional
Industry Standard 3D CAD Capabilities	✓	✓	✓	✓	✓
Augmented Reality Design Visualization	✓	✓	✓	✓	✓
Top Down Design & Concurrent Engineering	✗	✓	✓	✓	✓
Prismatic & Multi-Surface Milling	✗	✓	✓	✓	✓
Engineering Notebook	✗	✓	✓	✓	✓
Advanced Surfacing & Additive Manufacturing	✗	✗	✓	✓	✓
GD&T & Tolerance Analysis	✗	✗	✓	✓	✓
Mold Design & High-Speed Milling	✗	✗	✓	✓	✓
Advanced Multi-CAD Collaboration	✗	✗	✗	✓	✓
Simulation & Fatigue Advisor	✗	✗	✗	✓	✓
Production Machining	✗	✗	✗	✓	✓
Interface for JT	✗	✗	✗	✓	✓
IoT-driven Product Insight	✗	✗	✗	✓	✓
Advanced Simulation	✗	✗	✗	✗	✓
Options Modeler & Generative Design (GTO)	✗	✗	✗	✗	✓
Metal Printing & Complete Machining	✗	✗	✗	✗	✓
Clearance and Creepage Analysis	✗	✗	✗	✗	✓
CREO+					
PTC Control Center	✓	✓	✓		
Real-Time Collaboration with Creo+	✓	✓	✓		

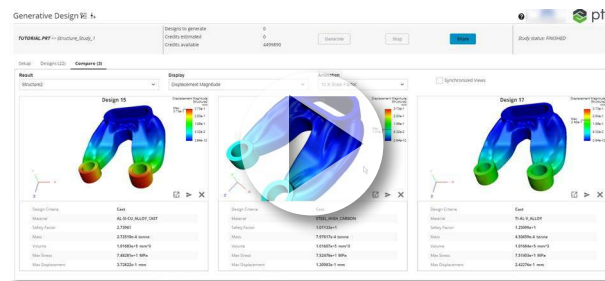
[Click for comprehensive package information](#)



IS YOUR DESIGN SOFTWARE KEEPING UP? HONESTLY ASSESS YOUR CAD ENVIRONMENT

GENERATIVE DESIGN

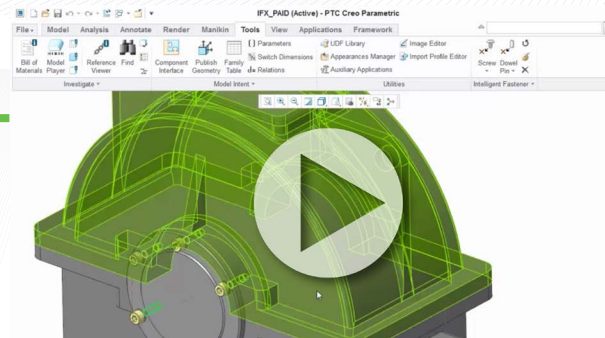
Is your software working within your constraints to create optimal designs? With new technologies like topology optimization and generative design, your software generates options for more efficient designs based on your input. The results lead to more innovative, efficient, and competitive products. [Available in DEP]



Generative design offers users a selection of AI-driven designs based on input, including manufacturing method. "On-premise GTO is available in Design Engineering Professional package. Cloud-based GDX is available as an add-on.]

FASTENERS

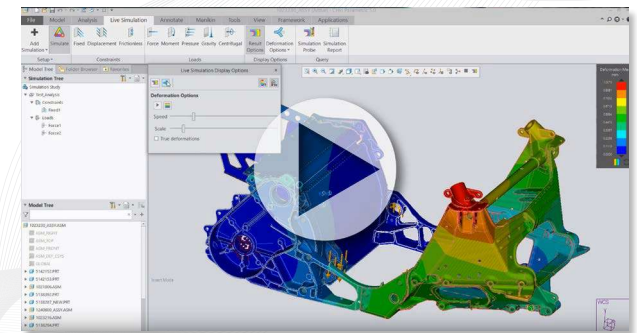
Work with screws, nuts, bolts, washers, pins, and dowels? A library of common fasteners and automatic, intelligent tracking, and placement can help you avoid errors (and tedium) while building complex models. [Available in all packages.]



Creo IFC includes a large, customizable library of fasteners.

EFFECTIVE DESIGN GUIDANCE

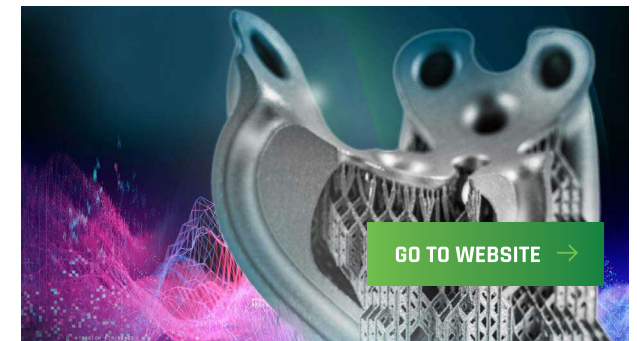
Are you confident you're making the best decisions possible? Your software should provide real-time feedback on your design decisions as you make them—freeing you up to try out more ideas and iterate faster. [Creo Simulation Live is available as an add-on to all packages.]



Creo Simulation Live provides real-time feedback as you make design changes.

ADDITIVE MANUFACTURING

Are you fully designing for additive manufacturing? Your system should allow you to prepare parts, including parametrically driven lattices; optimize tray placement; and integrate directly with industry-leading 3D printers. [Available in DAP, DE, DEP.]



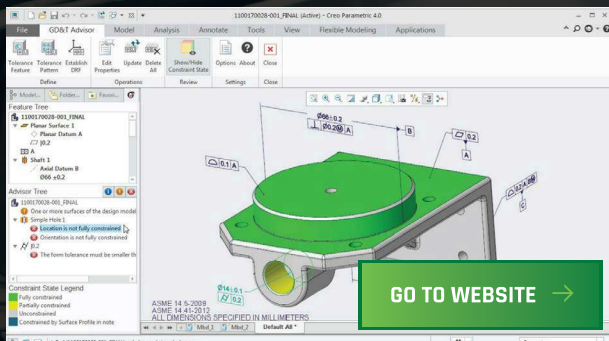
Design, optimize, validate, and run a print check in Creo. Works with polymers and metals.

*Key: DE=Design Essentials, DA=Design Advanced, DAP=Design Advanced Professional, DE=Design Engineering, DEP=Design Engineering Professional.



GD&T ADVISOR

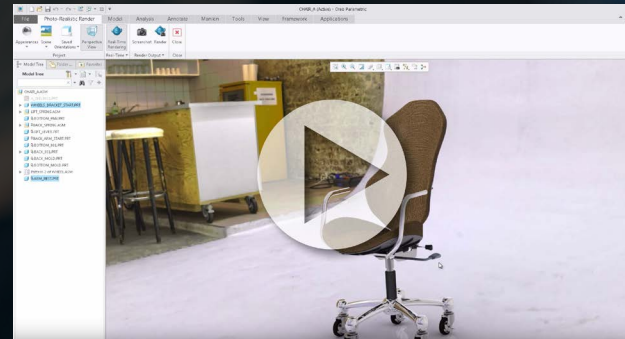
Adopting a model-based engineering environment? Use your CAD system to ensure your designs comply with GD&T standards throughout the application process—speeding up your work and preventing costly errors. [Available in DAP, DE, DEP.]



Creo GD&T Advisor Extension takes the tedium and inaccuracies out of geometric dimensioning & tolerancing.

RENDERING

Can you create photorealistic geometry? For those in consumer products, seeing a model under good lighting and in everyday settings shouldn't be an afterthought. [Available in all packages.]



Rendering tools add life-like materials, lighting, and backgrounds to models.

AUGMENTED REALITY

Can you summon a fully immersive 3D tour of your work with a single click? Augmented reality experiences should be easy to generate and share. Plus, they should be secure from unwelcome viewers. [Available in all packages.]



See why Harvard Business Review says, "Every organization needs an augmented reality strategy."

IOT-DRIVEN PRODUCT INSIGHT

Ready to replace product design assumptions with facts? When CAD and IoT data come together, your able to access a feedback loop, enabling you to design products that are more reliable. [Available in DE, DEP.]

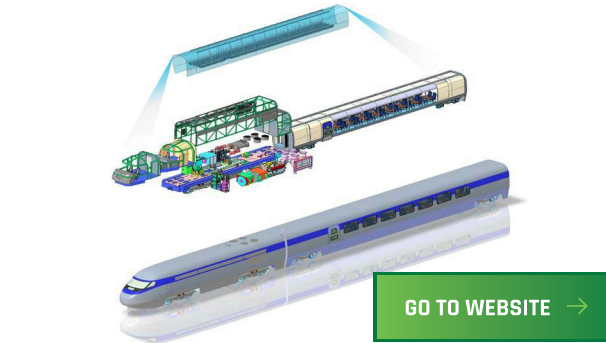


Creo Product Insight helps optimize your designs.



ADVANCED ASSEMBLY

Are teams working concurrently to build your complex products? Top-down structures and skeletons ensure that anybody can create and modify components and subassemblies without stepping on others' work. [Available in DA, DAP, DE, DEP.]



Creo Advanced Assembly Extension ensures the whole design team stays up to date.

ROUTED SYSTEMS DESIGN

Needing to streamline electrification? Automate your piping, cabling [Available in all packages], and clearance and creepage analysis [Available in DEP.]



Creo PCX and Creo CCX automates every step of the way, reducing design cycles.

ENGINEERING CALCULATION SOFTWARE

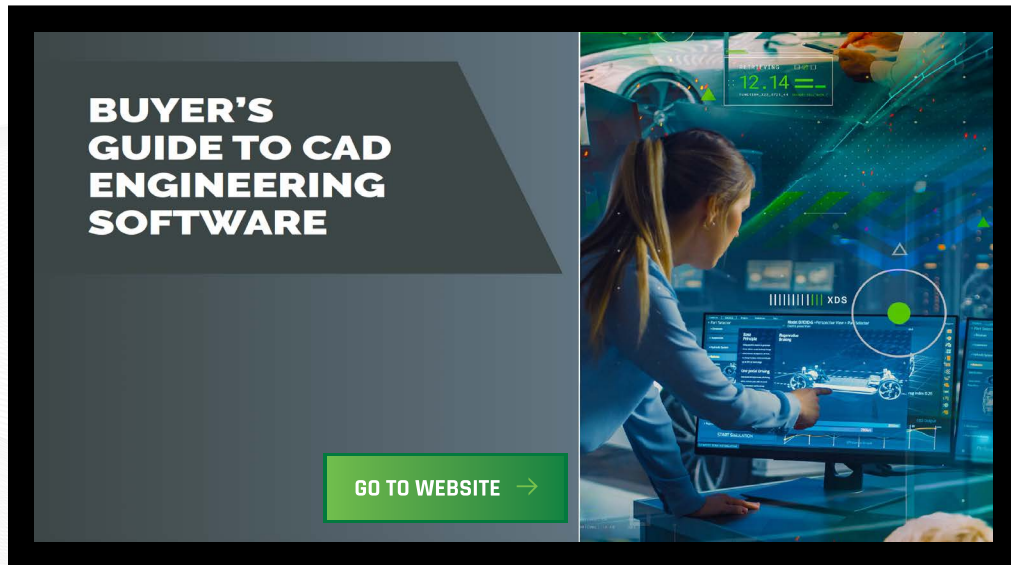
Are your calculations driving your designs and vice versa? PTC Mathcad provides a true digital engineering notebook, tracking and communicating your calculations. Now, nobody ever has to wonder, "How did you get that number or dimension?" [Available in DA, DAP, DE, DEP].



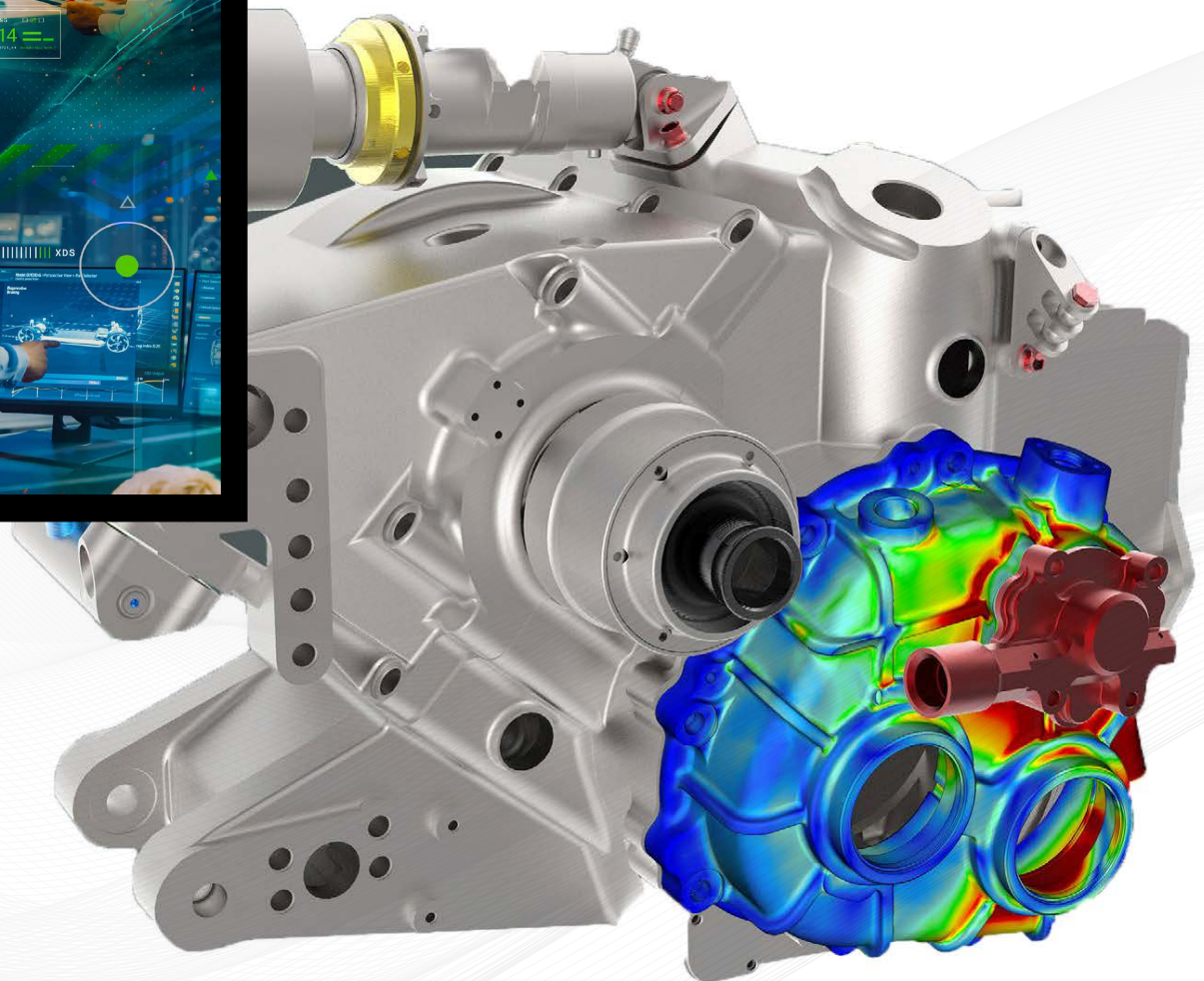


HOW DID YOUR SOFTWARE DO?

If you've fallen behind, there's good news. The right package can provide you with more capabilities, at a lower cost, than you might think.



For more help deciding, check out the CAD Buyer's Guide Checklist.





>>> THE CREO ADVANTAGE

Creo is the 3D CAD solution that helps you accelerate product innovation to build better products faster. Easy-to-learn Creo uses a model-based approach to seamlessly take you from the earliest phases of product design to manufacturing and beyond. Combining powerful, proven functionality with new technologies including generative design, real-time simulation, advanced manufacturing, IIoT and augmented reality, Creo helps you iterate faster, reduce costs and improve product quality. Creo is also available as a SaaS product, providing innovative cloud-based tools for real-time collaboration and streamlined license management and deployment. The world of product development moves quickly, and only Creo delivers the transformative tools you need to build competitive advantage and gain market share.

WHY SUBSCRIBE?

Licenses of Creo Design packages are available via annual subscription. That ensures you have the support, eLearning, and services you need at one price. Plus, you pay a lower up-front cost to get started. Scale up or change capabilities as your business needs change. To further lower your costs, consider cloud deployment where available.

EXPLORE CREO PACKAGES

With the Creo Design packages, you'll have the latest capabilities and premium support. Plus, you can upgrade at any time. Find the best package for your changing needs today.

[SELECT YOUR CREO PACKAGE →](#)





CAD BENEFITS OF SAAS - EXPANDING THE BENEFITS OF DIGITAL TRANSFORMATION

ACCELERATE INNOVATION WITH REAL-TIME COLLABORATION:

Multiple contributors can work concurrently in real-time for improved communication and enhanced innovation throughout the product design lifecycle.

EFFICIENT LICENSE MANAGEMENT:

Reduce time and effort of managing and deploying licenses, using cloud-based desktop tools. Deliver required entitlements to groups and users efficiently and at scale.

BETTER USER EXPERIENCE:

Automatic updates ensure all users have access to the latest improvements.

DATA SECURITY:

Intellectual property is protected through better access control. Avoid sending files through email and unsecured servers.

© 2025, PTC Inc. (PTC). All rights reserved. Information described herein is furnished for informational use only, is subject to change without notice, and should not be taken as a guarantee, commitment, or offer by PTC. PTC, the PTC logo, and all PTC product names and logos are trademarks or registered trademarks of PTC and/or its subsidiaries in the United States and other countries. All other product or company names are property of their respective owners. The timing of any product release, including any features or functionality, is subject to change at PTC's discretion.

661972_Creo_Design_Packages_e_Book_Updates_0425