



CREO DESIGN PACKAGES



design the way it should be

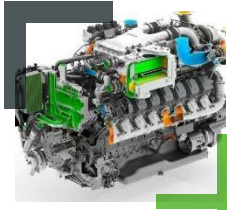


You deserve more in your 3D CAD packages and Creo delivers. Welcome to the new industry standard, with more capabilities in every seat, out of the box. With Creo Design Packages, you'll be able to stay ahead of the competition by building more innovative products faster and at less cost. Design the products of the future, today with Creo Design Packages.

CREO DESIGN PACKAGES

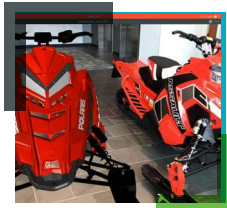
| | Design Essentials | Design Advanced | Design Advanced Plus | Design Premium | Design Premium Plus |
|---|-------------------|-----------------|----------------------|----------------|---------------------|
| Industry Standard 3D CAD Capabilities | ✓ | ✓ | ✓ | ✓ | ✓ |
| Augmented Reality Design Visualization | ✓ | ✓ | ✓ | ✓ | ✓ |
| Top Down Design & Concurrent Engineering | | ✓ | ✓ | ✓ | ✓ |
| Prismatic & Multi-surface Milling | | ✓ | ✓ | ✓ | ✓ |
| Advanced Surfacing & Additive Manufacturing | | | ✓ | ✓ | ✓ |
| GD&T & Tolerance Analysis | | | ✓ | ✓ | ✓ |
| Mold Design & High-speed Milling | | | ✓ | ✓ | ✓ |
| Extended Collaboration | | | | ✓ | ✓ |
| Mathcad | | ✓ | ✓ | ✓ | ✓ |
| Simulation, Basic CFD & Fatigue Advisor | | | | ✓ | ✓ |
| Production Machining | | | | ✓ | ✓ |
| Advanced Simulation & CFD | | | | | ✓ |
| Options Modeler & Topology Optimization | | | | | ✓ |
| Metal Printing & Complete Machining | | | | | ✓ |





Industry Standard 3D CAD Capabilities

- For more than 30 years, thousands of companies have relied on Creo's robust set of 3D CAD capabilities.
- 3D Part & Assembly Design
- Automatic 2D Drawing Creation
- Parametric & Freestyle Surfacing
- Assembly Management & Performance
- Sheet Metal Design
- Mechanism Design
- Plastic Part Design
- Direct Modeling (Flexible Modeling)
- Additive Manufacturing
- Augmented Reality



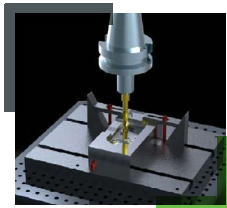
Augmented Reality Design Visualization

- In every seat. With a few clicks, you can author and publish an AR experience from inside your Creo model.



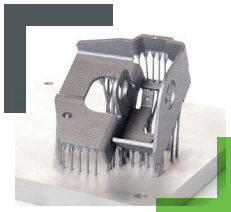
Top Down Design & Concurrent Engineering

- Plan out the assembly's skeleton so your team can work in parallel. When primary design intent changes, the assemblies adapt.



Prismatic & Multi-surface Milling

- Go smoothly from product design to manufacturing with this specialist for prismatic production machining.



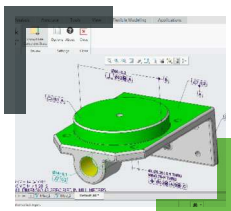
Additive Manufacturing

- Go from concept to print check all in Creo and give your design production-ready surfaces.



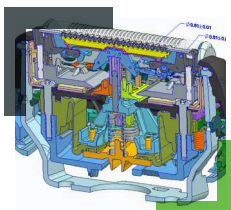
Advanced Surfacing

- Combine the power of parametric modeling and flexibility of freeform surfacing.



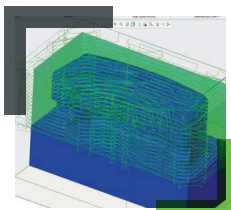
Geometric Dimensioning & Tolerancing

- Expert guidance on the application of GD&T and validation that you've applied GD&T correctly.



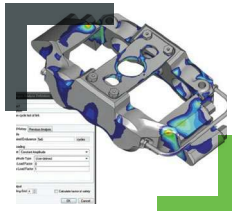
Tolerance Analysis

- Analyze and document geometric tolerances directly on 3D CAD models.



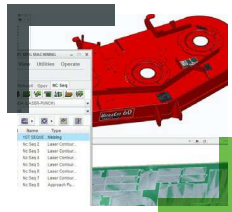
Mold Design & High-speed Milling

- Improve the efficiency and productivity of your mold design and tooling, and benefit from high-speed machining tool paths.



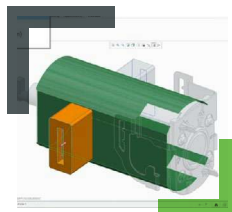
Simulation, Basic Computational Fluid Dynamics, & Fatigue Advisor

- Designed specifically for the engineer, these tools allow you to make simulation part of your own design process.



Production Machining

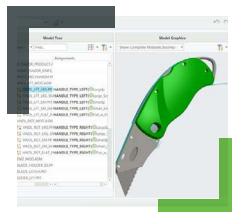
- Robust NC programming capabilities spanning the functions of milling, turning, and wire EDM.



Extended Collaboration

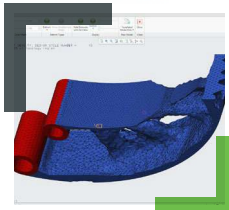
Seamlessly integrate and work with data from SolidWorks and Autodesk Inventor, CATIA V4/V5, Siemens NX:

- Open, Update and Save As native SolidWorks, CATIA V4/V5, Siemens NX files
- Automatically detect and update Inventor, SolidWorks and Autodesk Inventor, CATIA V4/V5, Siemens NX data
- Open and update native Autodesk Inventor files



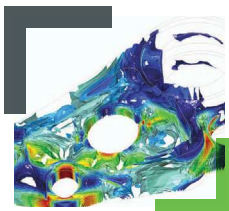
Options Modeler

- Create and validate 3D modular products.



Topology Optimization

- Create optimized parametric geometry by defining objectives and constraints and then driving your model toward specified requirements.



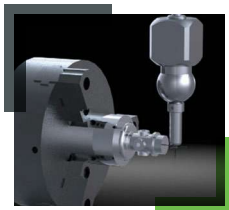
Advanced Simulation & CFD

- Simulation and analysis at your fingertips. Find and fix issues with liquid or gas flow around your products – before you invest in prototypes.



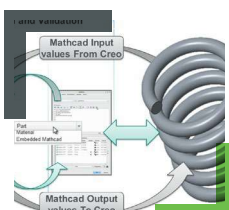
Metal Printing

- Creo has you covered for the major metal printers on the market today.



Complete Machining

- Creo Production Machining gives you multi-axis machining, plus full NC programming and extensive tool libraries.



PTC Mathcad

Perform, analyze, and share your most vital calculations:

- Conduct complex engineering calculations to validate your designs
- Comprehensive unit support for numeric and symbolic calculations, functions, solve blocks, tables, vectors/matrices, and plots
- Lock content to prevent viewing and hide proprietary information

BENEFITS OF SUBSCRIPTION

(Included in every Creo Design Package):

STANDARD ELEARNING LIBRARY:

Stop searching for answers. Over 140 hours of training are now at your fingertips.

EXTENDED LICENSE BORROWING:

Working remotely just got easier. Borrow floating licenses for up to 180 days - 150 days more than perpetual.

HOME USE LICENSE:

Leave the laptop at work. Every package now includes a home use license of the Creo Design package.

PERFORMANCE ADVISOR:

The Creo Performance Advisor provides a dashboard for your entire Creo installation, allowing you to understand and optimize the performance of your entire Creo environment.

>>> THE CREO ADVANTAGE

Creo is the 3D CAD solution that helps you accelerate product innovation so you can build better products faster. Easy-to-learn Creo seamlessly takes you from the earliest phases of product design to manufacturing and beyond. You can combine powerful, proven functionality with new technologies such as generative design, augmented reality, real-time simulation, additive manufacturing and the IoT, to iterate faster, reduce costs and improve product quality. The world of product development moves quickly, and only Creo delivers the transformative tools you need to build competitive advantage and gain market share.

Please visit the [PTC support page](#) for the most up-to-date platform support and system requirements.

© 2021, PTC Inc. (PTC). All rights reserved. Information described herein is furnished for informational use only, is subject to change without notice, and should not be taken as a guarantee, commitment, or offer by PTC. PTC, the PTC logo, and all PTC product names and logos are trademarks or registered trademarks of PTC and/or its subsidiaries in the United States and other countries. All other product or company names are property of their respective owners. The timing of any product release, including any features or functionality, is subject to change at PTC's discretion.

61103 -CREO-Design-Packages-Overview-3.21