

# PTC Implementer<sup>®</sup>

## Managing Development on IBM i<sup>™</sup>

PTC Implementer is the premier software configuration management and deployment solution for IBM i. Utilizing host-based and graphical user interfaces, Implementer provides the simplicity necessary for first time users, and the breadth and depth for more advanced users.

In addition to simplifying development and software change management, including full traceability and auditability of all software changes, PTC Implementer ensures the integrity of software installations in production, development, and testing environments on IBM i servers.

The reliability of the IBM i has made it a backbone platform in many organizations. However, modernization efforts to provide customer accessible web front ends, or interconnectivity between systems, introduced new development on different platforms and languages. PTC Implementer integrates with the PTC Windchill RV&S (formerly Integrity) global software development solution to provide complete change management across all development platforms. Together, PTC Implementer and PTC Windchill RV&S coordinate and manage all activities and artifacts associated with software development including:

- requirements management
- software configuration management
- change management
- test management
- defect management
- release management for custom built and packages applications

With PTC Implementer or PTC Implementer with PTC Windchill RV&S, PTC has the appropriate solutions to fit the size, complexity, and specific challenges across your software development and IT team.

### Challenges

Technology is everywhere, and software is the power behind most of the innovation we see in the marketplace today. The competitive demand for new and exciting products, applications, and services means software development teams and IT organizations are expected to deliver their projects faster and with higher quality than ever before. This increased reliance on software development for business-critical applications means there is simply more happening and more places where things could go wrong.

What does this mean for your IBM i development?

- More development, larger libraries, new languages, cross development dependencies, complex builds and compiles – all straining the productivity levels of your teams.
- More risk at every step in the lifecycle – more projects, new and changing requirements, a greater chance of defect, and bigger impacts to the business for projects delivered late or not as expected.
- Regulation-enforced separation of duties increasing the need for enhanced

collaboration across the IT team from initial requests, development, test, and releases.

- Greater visibility from the business into IT spending and activities across platforms, locations, and teams as it directly impacts profitability and competitiveness of the organization.
- A greater need for common processes to unify teams and standardize development efforts.

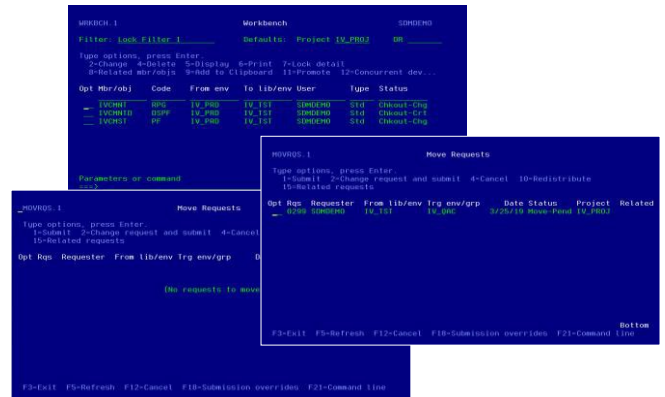
Whether you are a retailer managing the link between POS and the back office, a manufacturer seeking to improve quality processes, or a public company working to tighten IT controls, every organization using the IBM i needs to think about change management control.

### The Solution

PTC Implementer provides change management for your IBM i development that will keep track of your libraries, environments, and objects throughout the development lifecycle and simplifies the release process for your team. The system is designed for the IBM i development team, to increase the productivity of the team while automatically keeping track of changes and enforcing a separation of duties for auditing. The PTC Implementer solution stands alone for IBM i IT teams and continues to manage the applications at the backbone of many organizations across the world today.

Combining the power and stability of the PTC Implementer solution for IBM i with the enterprise capabilities of the PTC Windchill RV&S global development solution is the right mix for organizations that have introduced cross platform development or are growing in size and complexity. Whether the IBM i development team is working hand in hand with different software teams or working on completely different projects, the sheer size of these IT teams and the reliance on the various software teams for critical business apps means greater importance for IT projects and likely higher regulatory controls. PTC

Implementer integrated with PTC Windchill RV&S provides change management that serves the needs of IBM i developers, developers on distributed platforms, IT operations staff managing production environments, as well as the CIO with visibility across all IT processes and activities.



Separation of Duties / SOX Requirements

PTC is the first and only company to offer a solution built and supported by one company, spanning IBM i as well as other enterprise platforms, linking teams with unified processes.

- CIOs gain visibility on the IBM i as well as all other major platforms, accessing real time metrics and trends analysis against all projects and applications in the IT portfolio.
- Development and IT Operations Managers gain enhanced productivity through improved team collaboration, greater predictability of release cycles and deployment operations, and a complete audit trail that documents all steps and stages of the development lifecycle.
- Release Managers can reduce business risk through highly controlled and automated deployment of changes into production environments.
- Developers spend more time building applications and utilize features that automate common programming tasks and operational activities.

## PTC Implementer Features and Benefits

**Developer Workbench** — An intuitive environment to make host-based development faster.

**Integration with IBM Rational Developer for i (RDi)** — Provides developers with a single point of control, tying process management, versioning, code promotion activities, and task assignments directly into RDi.

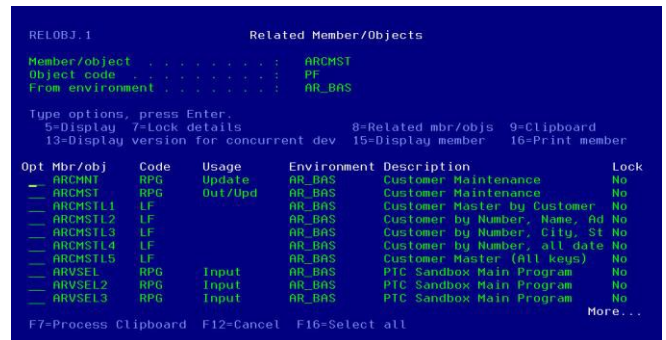
**Compiling** — Ensures the accuracy of compiled items by retaining the existing object characteristics. Object examination technology eliminates the need to manually configure compile rules and defaults.

**Packaged Applications** — Integrate and adapt seamlessly to dozens of the most popular application packages in the market today including SAP, Oracle's JD Edwards World, Infor (BPCS, Infinium, PRMS), American Software, and Lawson. Plus, numerous other products targeting vertical industries are also supported out of the box.

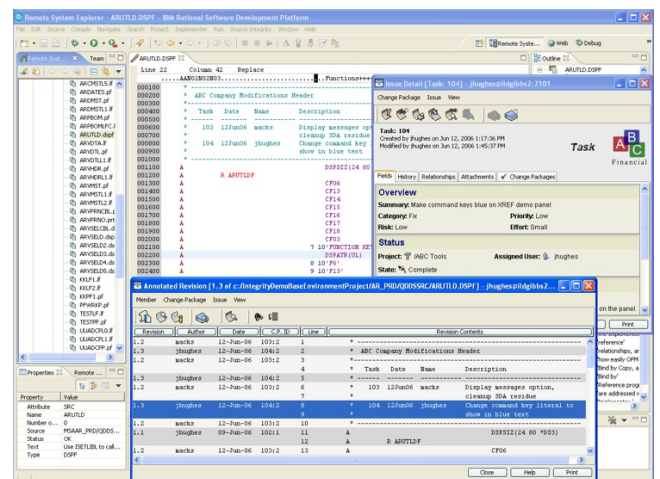
**Development Tool Integrations** — Integrate and adapt to dozens of the most popular IBM i host-based and client-based development tools. Products supported include those from companies such as CA, LANSA, Help Systems, BCD, IBM, Infor, Hawkeye Information Systems, and Original Software.

**Secure Promotion Technology** — Ensure the integrity of application libraries with an authenticated adoption scheme that prevents backdoor updates to your applications.

**Parallel/Concurrent Development** — Ensures proper controls over initiating and approving changes that result from multiple developers working on separate copies of the same source simultaneously.



View Related Objects – Impact Analysis



Integration with IBM Rational Developer for i

**Database Support** — The latest features of both SQL and DDS-based files are supported. Advanced features include dynamically created SQL Alter Table technology to speed database promotions and SQL stored procedures and UDF support.

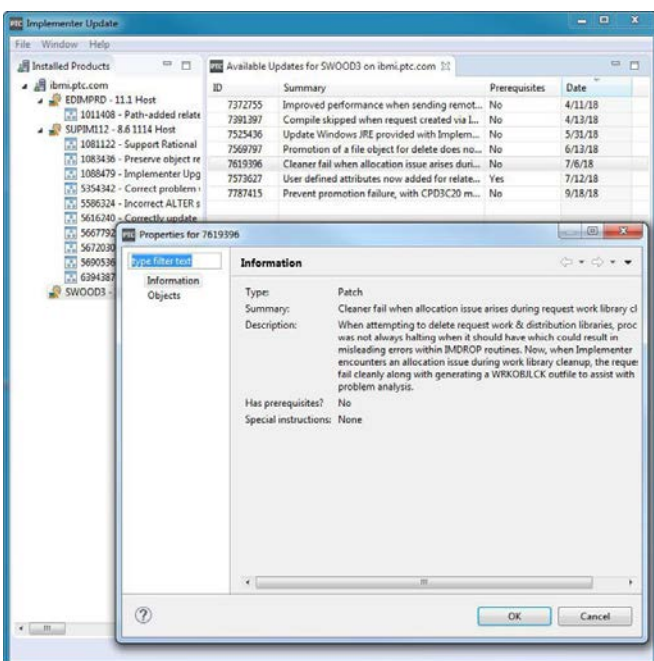
**Impact Analysis** — All application dependencies are reviewed automatically upon promotion to prevent corruption of test and production systems. With an application pathing facility, promotion/deployment scanners ensure all impacted production objects are analyzed and recompiled into the correct testing libraries.

**Release Management** — Target IBM i or other platforms with unattended distribution and installation to a single or multiple location. Allows

for visibility of a unified status of all changes from a single location to provide real-time status on all deployments.

**Emergency Development** — When the integrity of your production applications becomes compromised, emergency development capabilities and processes enable expedited rollbacks and promotions to restore or update the affected application in one step.

**Implementer Update** – Allows new features, fixes, upgrades, and new installations to be applied with a user friendly, stand-alone application.



Easily install or upgrade Implementer, apply Implementer updates, and create Implementer Diagnostic Packages for Support

Added Features and Benefits with PTC Windchill RV&S

**Real Time Reporting and Metrics** — Customizable dashboards by role provide instant visibility into the health of any given project.

**Additional GUI Capabilities** — Visual differencing, annotated views, and tree-view of source archives are just a few of the features

available directly from host-based panels or from Rational Developer for i (RDi). Also enables work with Zend PHP.

**Requirements Management** — Capture and validate software requirements, link them to downstream development and testing activities, and manage their completion through a unified process across the lifecycle.

**Workflow Enabled Development** — Both native IBM i projects and full application modernization projects spanning multiple technologies and platforms, benefit from advanced workflow features such as dashboards, real-time metrics, graphical workflow modeling, and automated processes. Manage and deploy applications using either a continuous flow development (Agile) model or an application versioning (Waterfall) approach.

**Source Code and Configuration Management** — Manage the versioning and development activities of distributed development.

**Test Management** — Effective test management helps deliver higher quality projects, and when linked to requirements, helps increase first time delivered right performance.

Find additional information on PTC Implementer by visiting: <https://www.ptc.com/products/implementer>

© 2022, PTC Inc. (PTC). All rights reserved. Information described herein is furnished for informational use only, is subject to change without notice, and should not be taken as a guarantee, commitment, or offer by PTC. PTC, the PTC logo, and all PTC product names and logos are trademarks or registered trademarks of PTC and/or its subsidiaries in the United States and other countries. All other product or company names are property of their respective owners. The timing of any product release, including any features or functionality, is subject to change at PTC's discretion.

RB-20220118-Implementer-v12\_5