



LIVEWORX

A NEW ERA IN PRODUCT LIFECYCLE INNOVATION

SESSION ID: CA1477PR

INTRODUCING CREO+: PTC'S NEWEST SOFTWARE AS A SERVICE (SAAS) CAD SOLUTION

Mark Fischer

Sr. Director, CAD Product Management, PTC

Nihal Velpanur

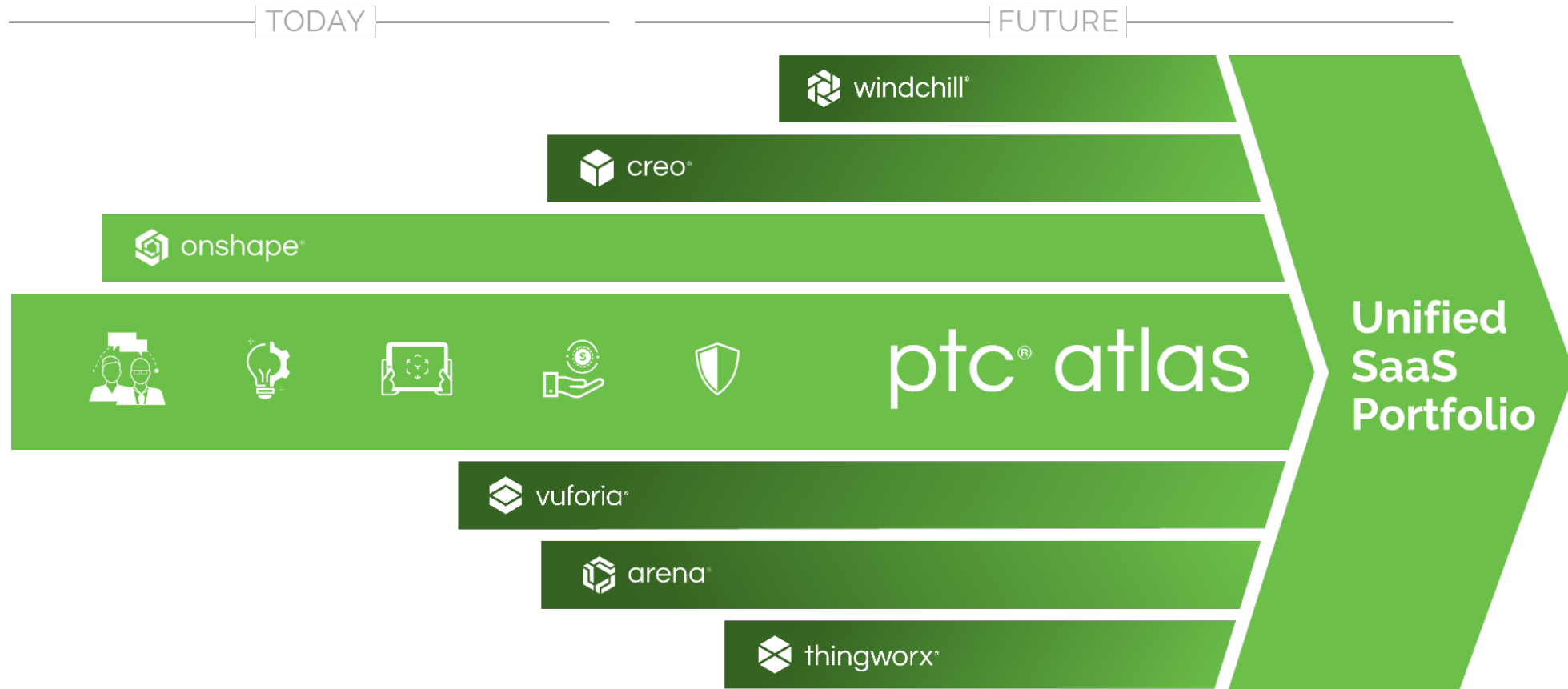
Principal Product Manager, PTC

May 16th, 2023

[LIVEWORX.COM](https://www.liveworx.com) | [#LIVEWORX](https://twitter.com/LIVEWORX)

DRIVING DIGITAL TRANSFORMATION

PTC SaaS Platform which provides Applications and Services for Digital Transformation





WHY CAD SaaS? CRITICAL-BUSINESS BENEFITS



CREO+ OVERVIEW

WHAT IS CREO+

Creo+ is the next evolution of CAD solutions. It combines the **power and proven functionality of Creo**, with new **cloud-based services** to enhance team collaboration, improve user productivity and streamline license management and administration.

- No data translation
- Fully upwards compatible with on-prem Creo
- Identical core CAD capabilities to non-SaaS Creo
- Tight integration with Windchill
- Evolving SaaS services in Atlas to promote value for customers



• **easy** to use • **easy** to configure • **easy** to deploy • **always** up to date •

CREO+: PTC CONTROL CENTER

Creo+ will initially include a Control Center on Atlas that will allow administrators to control **user access** to Creo, streamline the **management of licenses**, and **easily deploy and update Creo** locally across your entire organization using the **power of the cloud** without any user involvement.

Key Components



Central administration



Cloud-based licensing



Manage groups and users



Automatic deployment of Creo with updates



Rich license usage telemetry

Benefits



Reduce time, effort and indirect costs managing Creo licenses and deployment to users, departments and regions.



Manage organization groups and users with focused control on the deployed release of Creo and license entitlements.



Improved visibility into the overall usage of Creo across the organization, groups and users.

CREO+ PACKAGING

COMBINED NAMED USER & SHARED LICENSE ENTITLEMENTS



Named -User License Entitlements



Explore Design Essentials Design Advanced Design Advanced Professional

Individual Extensions

A user can be assigned one of the four **Named -User License Entitlements** and optional **Extensions** based on their role and responsibility when invited to the Organization.

Shared License Entitlement



Flexible Design Advanced

A user can be assigned a **Shared License Entitlement** when invited to the Organization. When utilized, the license will be locked to the user for a 24-hour period.

Shared Extension Pool

Advanced Assembly

Interactive Surface Design

Ansys Simulation

Simulation Live

Tool Design

Etc.

Users can access Shared Extensions within Creo+ as needed.

Note: Creo+ will not be sold as a domestic or global entitlement. PTC will provide a single offering for all customers.

ADMINISTRATION MADE EASY

The screenshot shows a web browser window with the URL <https://creo.ptc.com/creoplus/admin-portal/startup>. The browser's address bar and tabs are visible at the top. The page header includes the Creo+ logo and the text "ACME Engineering - Creo+ Beta 2" with a user profile icon for "Mark Fischer".

The main content area is titled "Home" and features a left-hand navigation menu with the following items: "Home" (selected), "People", "Licenses", "Profiles", "Collaboration", and "PTC Admin Center".

The main content area contains the following sections:

- Welcome to the Creo+ Portal**: A message stating "Here you can configure Creo+ global settings, assign licenses, and install Creo+." It includes a list of "Simple steps to get started":
 1. Complete the Global Setup.
 2. Invite people to the organization.
 3. Assign licenses to enable them to run Creo+.
 4. Use the Profiles tab to create and edit profiles in the organization.A note suggests watching "Introduction to Creo+" for an overview of the setup.
- ACME Engineering - Creo+ Beta 2 Summary**: A summary box showing "People: 3" and "Groups: 3".
- Global Setup**: A card with the description "Set up the Creo+ version and configuration for your organization." and a blue "Start" button.
- Invite People**: A card with the description "Invite People to your organization via the Admin Portal" and a blue "Start" button.
- Setup Licenses**: A card with the description "Assign license entitlements to people." and a blue "Start" button.
- Download PTC Control Center**: A card with the description "Download and install the PTC Control Center to automatically install Creo+ on your computer." and a white "Download" button.
- Resources**: A section with a link for "Introduction to Creo+".

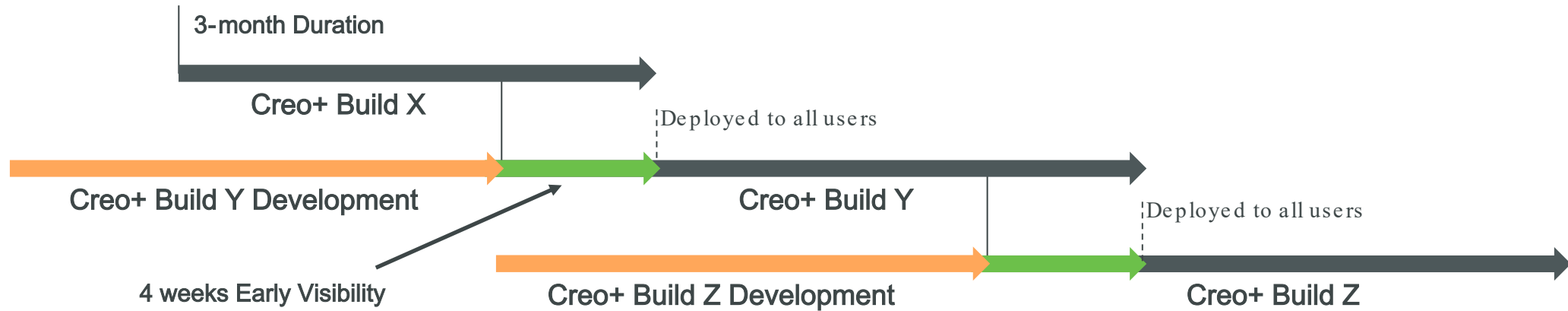
AUTOMATIC DEPLOYMENT

The screenshot shows a web browser window with the URL <https://creo.ptc.com/creoplus/>. The browser's address bar and tabs are visible at the top. Below the browser, the PTC Creo+ Portal header includes the logo, navigation links, and a user profile for Alex Fischer. The main content area is titled "Home" and contains three primary sections:

- Download PTC Control Center:** A card with the text "Download and install the PTC Control Center to automatically install Creo+ on your computer." and a blue "Download" button.
- Collaboration Sessions:** A card with the text "Manage Collaboration Sessions" and a blue "Open" button.
- Resources:** A card titled "Introduction to Creo+" with the text "Watch a quick video on downloading and installing Creo+. Check out the new features in Creo+." and two buttons: "Watch Video" and "Read What's New".

The Windows taskbar at the bottom shows the system tray with the date and time: 10:59 AM, 3/7/2023.

ALWAYS ON THE LATEST BUILD!



- **New builds of Creo+** will be released approximately every **3 months**
- PTC will provide **early visibility** (up to 4 weeks duration) for companies to test their internal processes with the next build of Creo+
- Companies can designate specific individuals **Validators** who can participate in the testing phase
 - Users will automatically access the early visibility build during the testing phase through the PTC Control Center
- PTC will deliver **patch updates for critical issues** during the testing phase and after the build is deployed to all users
- Prior to the build release, PTC will have completed **extensive regression tests** meeting release guidelines before deploying new build

CREO+: REALTIME COLLABORATION

Creo+ introduces real-time collaboration, intended to enable multiple users to **work together** during the product development process, leveraging the benefits of the cloud and enabling **richer communication** across the organization, in order to design more efficiently and ensure a **faster time to market**.

Key Components



Multiple collaboration sessions



Extensive branching capabilities



Sharing, notifications and comments



Real-time synchronization and updates



Enhanced telemetry and analytics

Benefits



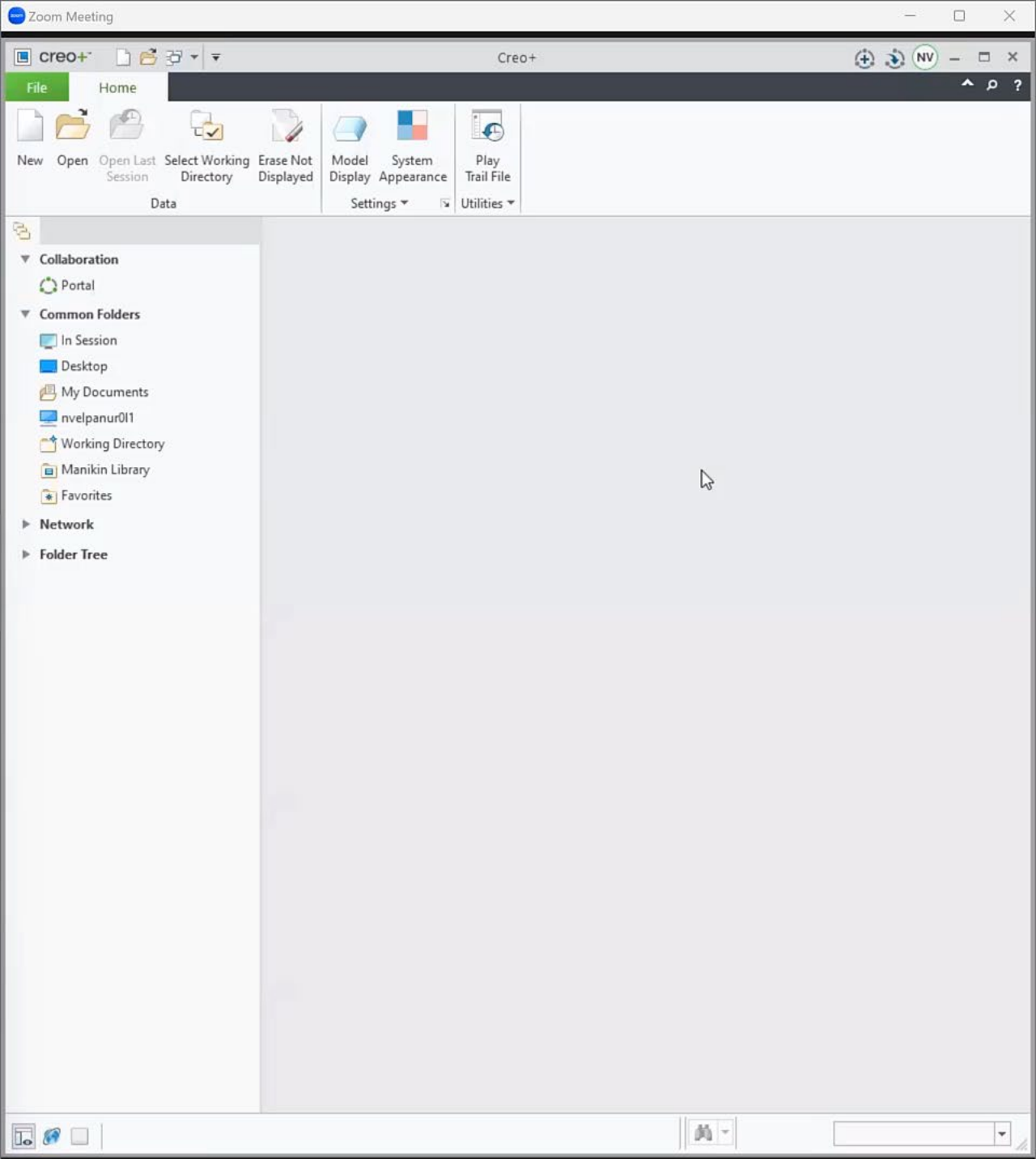
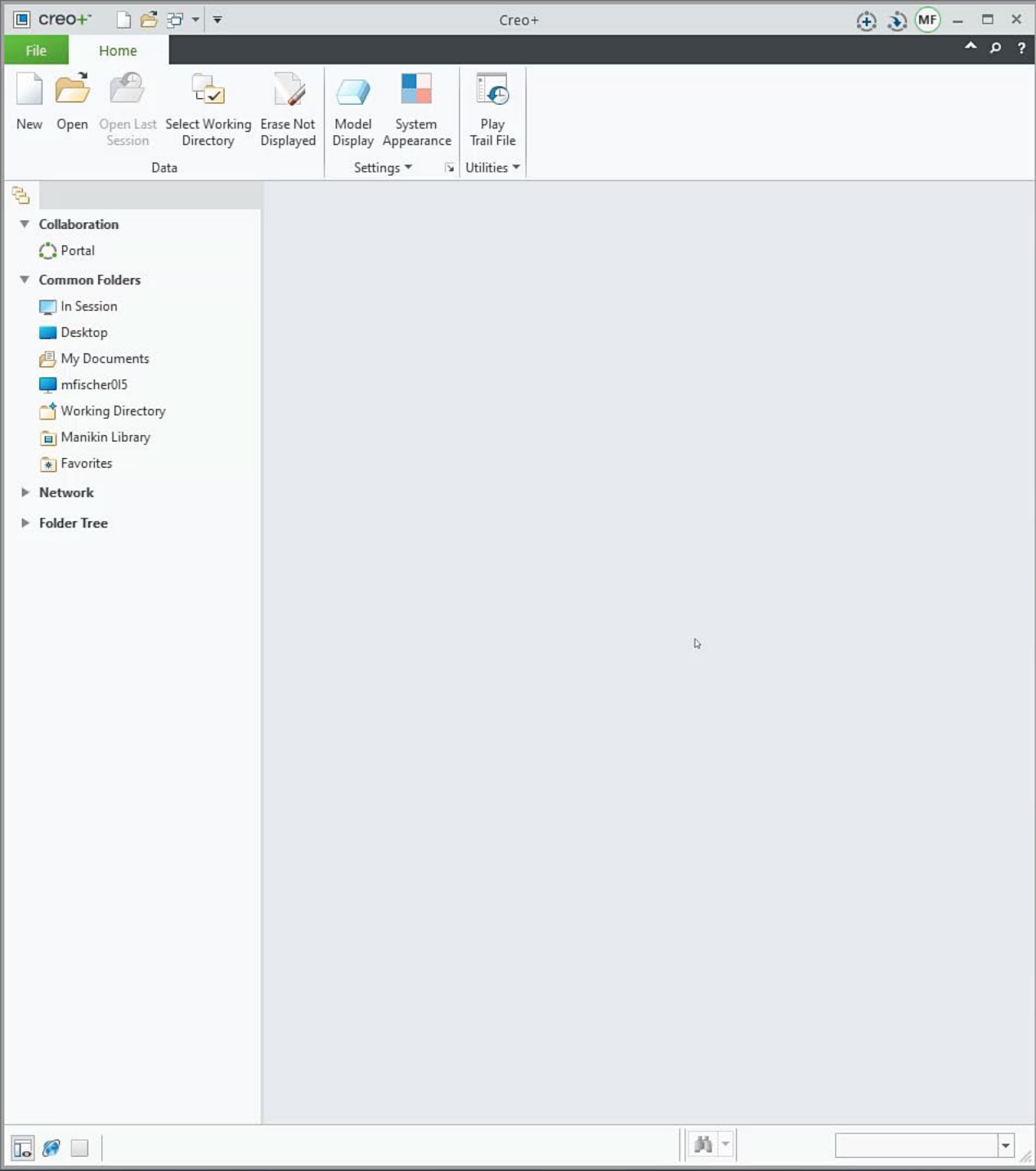
*Concurrent design with **multiple contributors** across the product design lifecycle allows **greater productivity** with internal and external stakeholders*



***Real-time updates** synced automatically along with rich feedback ensures you're always on the **latest and greatest** version of the design*



*Streamlined workflows and ability to iterate on **multiple design variations** to arrive at a final design **more efficiently** and go to market faster than ever before*





WINDCHILL COMPATIBILITY MATRIX

WINDCHILL COMPATIBILITY MATRIX

	Windchill 12.0.2.0	Windchill 12.1.X	Windchill 13.0.X (June 2023 release)	Windchill+ (Second Half FY22)
Creo 7.0	Compatible	Compatible	Not Compatible	Planned
Creo 8.0	Compatible	Compatible	Planned	Planned
Creo 9.0	Compatible	Compatible	Planned	Planned
Creo 10.0 (April 2023)	Planned	Planned	Planned	Planned
Creo 11.0 (April 2024)	Planned	Planned	Planned	TBD
Creo+ (May 2023)	Planned	Planned	Planned	Planned



CREO+ ROADMAP

FUTURE OF CREO+



Creo+ Product Launch

Centralized administration, automated deployment, and real-time collaboration

Configuration Management

Manage companies' configurations for Creo+

Creo+ Streaming

Stream Creo+ on any machine through a supported browser.

Customization Management

Manage customized applications

2023

2024

2025+

Expanded Innovation

Deliver quarterly updates of Creo+ enhancements

Enhanced Telemetry

Aggregated view of diagnostic data, performance and license usage.

Government Certification

Certification for controlled cloud environments.

Future features will be continuously improved based on current usage/ customer feedback

Future looking information. Subject to change without notice.



LIVEWORX

A NEW ERA IN PRODUCT LIFECYCLE INNOVATION

THANK YOU

LIVEWORX.COM | [#LIVEWORX](https://twitter.com/LIVEWORX)

ptc.com

