

OPC UA Client Driver

© 2024 PTC Inc. All Rights Reserved.

Table of Contents

OPC UA Client Driver	1
Table of Contents	2
OPC UA Client Driver	6
Overview	6
Profiles	7
Supported OPC UA Server Profiles	7
Tunneling	8
Certificate Model	8
Re-establishing Connections	9
Setup	9
Channel Properties — General	10
Tag Counts	10
Channel Properties — Write Optimizations	11
Channel Properties — Advanced	12
Channel Properties — UA Server	12
Channel Properties — UA Server Browser	14
Channel Properties — UA Session	15
Channel Properties — Authentication	15
Device Properties — General	16
Device Properties — Scan Mode	17
Device Properties — Subscription	18
Device Properties — Communications Parameters	18
Device Properties — Connection	19
Device Properties — Monitored Items	20
Device Properties — Tag Generation	21
Device Properties — Redundancy	22
Address Descriptions	23
Data Types Description	24
OPC UA Data Types	25
Event Log Messages	27
Error Descriptions	27
Channel failed to connect.	27
Channel failed to connect. 	27
Channel failed to connect. Status description = '<status>', Status code = <code>.	27
Channel failed to connect. Use the OPC UA Configuration Manager to ensure the client certificate is valid.	28

Channel failed to connect. Use the OPC UA Configuration Manager to ensure the client certificate is valid.	28
Channel failed to connect. Use the OPC UA Configuration Manager to ensure the client certificate is valid. Status description = '<status>', Status code = <code>.	28
Add item failed on device. Tag address = '<address>',	29
Add item failed on device. Tag address = '<address>', Status description = '<status>', Status code = <code>.	29
Remove item failed on device. Tag address = '<address>',	30
Remove item failed on device. Tag address = '<address>', Status description = '<status>', Status code = <code>.	30
Failed to remove items on device.	31
Failed to remove items on device. Status description = '<status>', Status code = <code>.	31
Failed to browse endpoints.	31
Failed to browse tags.	32
Channel rejected the server certificate. Use the OPC UA Configuration Manager to add the certificate to the trusted servers list. Server = '<name>'.	32
Reconnecting server due to shutdown notification.	32
Invalid session ID encountered. Attempting to reconnect...	32
Failed to add subscription for device.	32
Failed to add subscription for device. Status description = '<status>', Status code = <code>.	32
Reconnecting server due to connection loss.	33
Async write failed. Tag address = '<address>', Callback item error = <code>.	33
Tag was not imported. The item failed validation. Tag name = '<name>'.	33
Unknown data type for tag. Using default. Tag name = '<name>'.	34
Read request timeout on device.	34
Write request timeout on device.	34
Item is write only. Item ID = '<ID>'.	35
The authentication information for channel was cleared because a password was provided with no username.	35
The Publishing Interval for device has been set by the server. New interval = <number> (milliseconds), Requested interval = <number> (milliseconds).	35
The lifetime count for device has been set by the server. New count = <number>, Requested count = <number>.	36
The maximum keep-alive count for device has been set by the server. New count = <number>, Requested count = <number>.	36
The session timeout for channel has been set by the server. New timeout = <number> (milliseconds), Requested timeout = <number> (milliseconds).	36
The renewal period for channel has been set by the server. New period = <number> (milliseconds), Requested period = <number> (milliseconds).	37
Deadband was not applied to item. The item does not support deadband. Item ID = '<ID>'.	37
The driver's certificate expired. Use the OPC UA Configuration Manager to reissue the certificate.	37

Error encountered processing tags for import. No tags are imported. 37

There is no exact match for the configured endpoint URL in the UA Server. Attempting to connect using the configured URL. Channel endpoint URL = <address>, server endpoint description URL = <address>. 38

Unable to use registered read/write for tag '<address>'. | Status description = '<description>', Status code = <code>. 38

Unable to obtain data type information from server. Tags of some data types may not be imported. 38

Tag write failed. | Tag address = '<address>', Status description = '<status>', Status code = <code>. 38

Subscription Lost. Re-establishing. | Status description = '<description>', Status code = <code>. ... 39

Read request failed on device. | Status description = '<description>', Status code = <code>. 39

Array dimensions exceed two for tag. Tag cannot be imported. | Tag name = '<name>'. 39

UA data type not supported. Tag cannot be imported. | Tag name = '<name>', Data type = '<type>'. 39

Unable to import tag. Tag access level is not current read or current write. | Tag name = '<name>'. 39

Unable to read tag attributes during import. Tag cannot be imported. | Tag name = '<name>', Status description = '<status>', Status code = <code>. 40

Session watchdog read error. | Status description = '<status>', Status code = <code>. 40

UA data type not supported. Tag cannot be imported. | Tag name = '<name>', UA data type node id = '<type>'. 40

Write request failed. Writes to this UA data type are not supported. | Tag address = '<address>', UA data type node id = '<node id>'. 40

Write request timeout on device. | Item ID = '<id>' 41

Unable to read tag. UA data type not supported. | Tag address = '<address>', UA data type node id = '<type>'. 41

Message Boxes 41

Error encountered during import item browse. Server <server> may have stopped running. 42

Items on this page may not be changed while the driver is processing tags. 42

The Lifetime Count must be a minimum of three times the Max. Keep Alive Count (Lifetime Count = <count>). 42

Please enter a username. 42

Explanations 43

Cannot connect to the server. 43

The client certificate has expired. Please use the OPC UA Configuration manager to create a new certificate. 43

The client certificate is invalid. Please use the OPC UA Configuration Manager to update the client certificate. 43

The server certificate is revoked. Please use the OPC UA Configuration Manager to update the certificate. 43

The server certificate is untrusted. Please use the OPC UA Configuration Manager to add the cer- 44

tificate to the client's trusted store.

Timeout trying to perform the operation. 44

Index **45**

OPC UA Client Driver

CONTENTS

Overview

What is the OPC UA Client Driver?

Setup

How do I configure a channel and device for use with this driver?

Certificate Model

How are certificates used to create secure connections?

Data Types Description

What data types does this driver support?

Address Descriptions

How do I address a data location with the OPC UA Client Driver?

Event Log Messages


What error messages does the OPC UA Client Driver produce?

Version 1.078

© 2024 PTC Inc. All Rights Reserved.

Overview

The OPC UA Client Driver acts as a tunneling solution between servers, connecting two OPC servers on the same network, through VPNs, or over the internet. It supports OPC Unified Architecture (UA) specification, a technology that expands upon OPC Data Access. OPC UA provides plug-and-play capabilities without DCOM configuration and also provides secure and reliable connections between OPC servers.

 *For more information on OPC UA, refer to the OPC UA Configuration Manager help file.*

 **Tip:** The OPC DA Client Driver supports integration with the Media-Level Redundancy Plug-In.

Profiles

OPC UA is a multi-part specification that defines a number of services and information models referred to as features. Features are grouped into Profiles, which are then used to describe the functionality supported by a UA server or client.

• For a full list and a description of each OPC UA profile, refer to <http://www.opcfoundation.org/profilereporting/index.htm>.

• For a full list of the OPC UA Server profiles supported by the OPC UA Client Driver, refer to [Supported OPC UA Server Profiles](#).

Fully Supported OPC UA Profiles

- AddressSpace Lookup Client Facet
- Attribute Read Client Facet
- Attribute Write Client Facet
- Core Client Facet
- DataAccess Client Facet
- Discovery Client Facet
- UA-TCP UA-SC UA Binary
- SecurityPolicy - Basic128Rsa15 (Deprecated)
- SecurityPolicy - Basic256 (Deprecated)
- SecurityPolicy - Basic256Sha256
- SecurityPolicy - None (Insecure)

• **CAUTION:** Security policies Basic128Rsa15 and Basic256 have been deprecated by the OPC Foundation as of OPC UA specification version 1.04. The encryption provided by these policies is considered less secure and should be limited to providing backward compatibility.

Partially Supported OPC UA Profiles

- Base Client Behavior Facet. This profile does not support 'Security Administrator – XML Schema'.
- DataChange Subscriber Client Facet. This profile does not support 'Monitor Client by Index'.

Supported OPC UA Server Profiles

The OPC UA Client Driver supports connectivity to UA servers that support the following profiles:

Nano Embedded Device Server Profile

This profile is intended for chip-level devices with limited resources. Due to resource limitations, devices that support this OPC UA profile do not support Subscription or Monitored Item UA Services. The UA server only supports connectivity without security. The OPC UA Client Driver operates with the UA server when the Device Update Mode property is set to Poll.

Micro Embedded Device Server Profiles

This profile is intended for devices with limited resources. UA servers that support this profile support at least two sessions and a small number of subscriptions with monitored items. The OPC UA Client Driver operates with the UA server when the Device Update Mode property set to both Poll and Exception; however, users should be aware of the session, subscription, and monitored item limitations when adding channels, devices, and tags.

Embedded UA Server Profile

UA servers that support this profile should be equivalent to the Micro Embedded Device Server Profile with added security. The OPC UA Client Driver operates with the UA server when the Device Update Mode property set to both Poll and Exception; however, users should be aware of the session, subscription, and monitored item limitations when adding channels, devices, and tags.

Standard Server

UA servers that support the Standard Server profile support many sessions, subscriptions, and monitored items. The OPC UA Client Driver operate with the UA server when the Device Update Mode property set to both Poll and Exception.

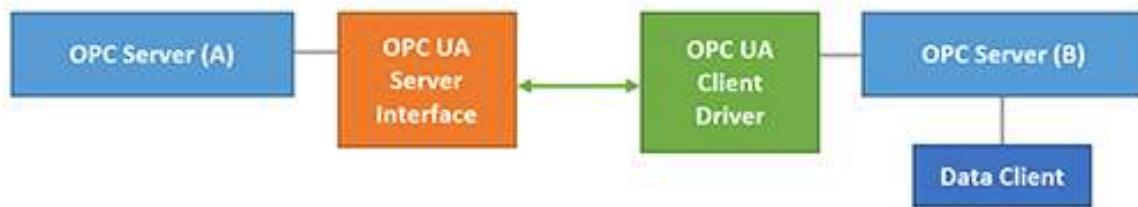
● Consult the UA server documentation to determine how many concurrent sessions (channels) and subscriptions (devices) are supported.

Tunneling

The OPC UA Client Driver creates a tunnel between two OPC servers. For example, imagine that there is an OPC Server A and OPC Server B. To create a tunnel, users would create an OPC UA Client Driver channel on OPC Server B and configure that channel to connect to the OPC UA server interface running on OPC Server A. Once a Data Client is connected to OPC Server B, a tunnel exists between the two OPC servers. Although the data client may not be able to receive data from OPC Server A on its own, it can receive the data with the help of the driver.

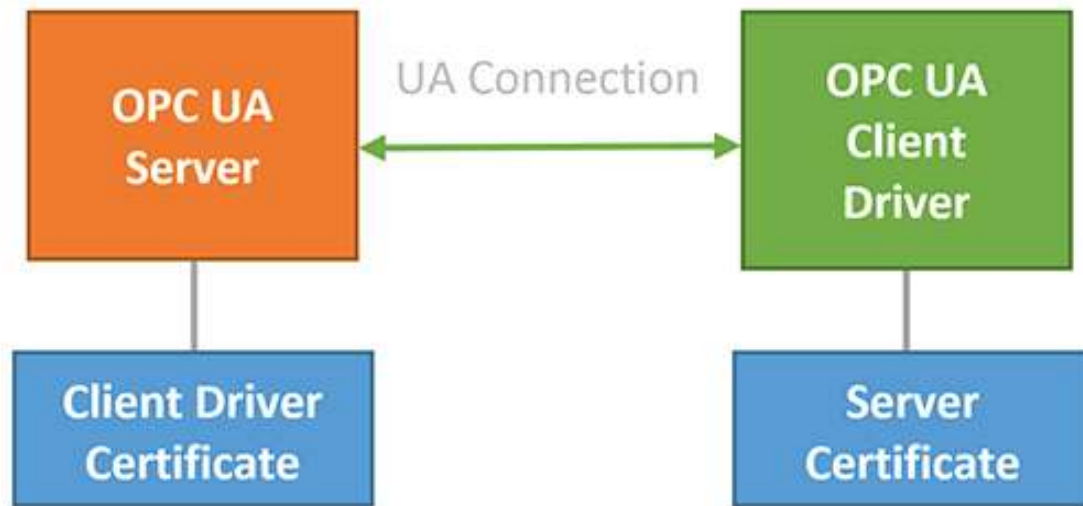
● **Note:** The OPC UA Client Driver supports security through the use of certificates. When security is enabled, all information exchanged between the OPC server and driver is protected.

● For more information, refer to [Certificate Model](#).



Certificate Model

Certificates are used for any channel whose security policy is set to Basic256Sha256, Basic128Rsa15, or Basic256 to secure connections between the OPC UA Client Driver and OPC UA Servers. To establish a secure UA connection, the OPC UA Client Driver needs access to the OPC UA server certificate. Likewise, the OPC UA server needs access to the OPC UA Client Driver certificate. Their relationship is as displayed in the image below.



◆ **Note:** The certificate swap must occur before the connection is made. The OPC UA Configuration Manager is a tool used to make certificate swaps between clients and servers easy. For more information on this tool and how to perform swaps, refer to the OPC UA Configuration Manager help file in the Runtime's **Help | Contents** menu.

Re-establishing Connections

The OPC UA Client Driver adheres to the OPC UA specification model for re-establishing connections when the OPC UA Client Driver becomes disconnected from the server. This model allows clients and servers to conserve resources and mitigate data loss by re-using sessions, subscriptions, and monitored items when reconnecting, rather than recreating all of those resources.

Upon re-establishing the connection, it is possible that the client may not receive updates for item with slowly-changing or unchanging data. In this case, after a period of one publishing interval has expired after the reconnect, the client performs a read on all items that have not received updates within the maximum age parameter to allow the OPC UA server to service the read from cache. This provides a good quality update for any items for which this read succeeds.

If the OPC UA Client Driver becomes disconnected long enough for the session and all subscriptions time out, the driver does not attempt to re-use any of those resources when it reconnects; it re-creates them all.

Setup

A channel represents a connection between the OPC UA Client Driver and an OPC UA server. Its properties are first set during channel creation and may be accessed later by clicking **Channel | Properties....**

A device is equivalent to an OPC UA subscription: it subscribes to specified OPC UA items / tags and receives data. Its properties are first set during the Device Wizard and may be accessed later by clicking **Device | Properties....**

Channel and Device Limits

The maximum number of channels supported by this driver is 256. The maximum number of devices supported by this driver is 256 per channel.

Channel Properties — General

This server supports the use of multiple simultaneous communications drivers. Each protocol or driver used in a server project is called a channel. A server project may consist of many channels with the same communications driver or with unique communications drivers. A channel acts as the basic building block of an OPC link. This group is used to specify general channel properties, such as the identification attributes and operating mode.

<p>Property Groups</p> <p>General</p> <p>Write Optimizations</p> <p>Advanced</p>	<p><input type="checkbox"/> Identification</p> <p>Name</p> <p>Description</p> <p>Driver</p> <p><input type="checkbox"/> Diagnostics</p> <p>Diagnostics Capture Disable</p> <p><input type="checkbox"/> Tag Counts</p> <p>Static Tags 10</p>
---	--

Identification

Name: Specify the user-defined identity of this channel. In each server project, each channel name must be unique. Although names can be up to 256 characters, some client applications have a limited display window when browsing the OPC server's tag space. The channel name is part of the OPC browser information. The property is required for creating a channel.

• For information on reserved characters, refer to "How To... Properly Name a Channel, Device, Tag, and Tag Group" in the server help.

Description: Specify user-defined information about this channel.

• Many of these properties, including Description, have an associated system tag.

Driver: Specify the protocol / driver for this channel. Specify the device driver that was selected during channel creation. It is a disabled setting in the channel properties. The property is required for creating a channel.

• **Note:** With the server's online full-time operation, these properties can be changed at any time. This includes changing the channel name to prevent clients from registering data with the server. If a client has already acquired an item from the server before the channel name is changed, the items are unaffected. If, after the channel name has been changed, the client application releases the item and attempts to re-acquire using the old channel name, the item is not accepted. Changes to the properties should not be made once a large client application has been developed. Utilize proper user role and privilege management to prevent operators from changing properties or accessing server features.

Diagnostics

Diagnostics Capture: When enabled, this option makes the channel's diagnostic information available to OPC applications. Because the server's diagnostic features require a minimal amount of overhead processing, it is recommended that they be utilized when needed and disabled when not. The default is disabled.

• **Note:** This property is not available if the driver does not support diagnostics.

• For more information, refer to *Communication Diagnostics in the server help*.

Tag Counts

Static Tags: Provides the total number of defined static tags at this level (device or channel). This information can be helpful in troubleshooting and load balancing.

Channel Properties — Write Optimizations

The server must ensure that the data written from the client application gets to the device on time. Given this goal, the server provides optimization properties to meet specific needs or improve application responsiveness.

Property Groups	[-] Write Optimizations	
General	Optimization Method	Write Only Latest Value for All Tags
Write Optimizations	Duty Cycle	10

Write Optimizations

Optimization Method: Controls how write data is passed to the underlying communications driver. The options are:

- **Write All Values for All Tags:** This option forces the server to attempt to write every value to the controller. In this mode, the server continues to gather write requests and add them to the server's internal write queue. The server processes the write queue and attempts to empty it by writing data to the device as quickly as possible. This mode ensures that everything written from the client applications is sent to the target device. This mode should be selected if the write operation order or the write item's content must uniquely be seen at the target device.
- **Write Only Latest Value for Non-Boolean Tags:** Many consecutive writes to the same value can accumulate in the write queue due to the time required to actually send the data to the device. If the server updates a write value that has already been placed in the write queue, far fewer writes are needed to reach the same final output value. In this way, no extra writes accumulate in the server's queue. When the user stops moving the slide switch, the value in the device is at the correct value at virtually the same time. As the mode states, any value that is not a Boolean value is updated in the server's internal write queue and sent to the device at the next possible opportunity. This can greatly improve the application performance.
 - **Note:** This option does not attempt to optimize writes to Boolean values. It allows users to optimize the operation of HMI data without causing problems with Boolean operations, such as a momentary push button.
- **Write Only Latest Value for All Tags:** This option takes the theory behind the second optimization mode and applies it to all tags. It is especially useful if the application only needs to send the latest value to the device. This mode optimizes all writes by updating the tags currently in the write queue before they are sent. This is the default mode.

Duty Cycle: is used to control the ratio of write to read operations. The ratio is always based on one read for every one to ten writes. The duty cycle is set to ten by default, meaning that ten writes occur for each read operation. Although the application is performing a large number of continuous writes, it must be ensured that read data is still given time to process. A setting of one results in one read operation for every write operation. If there are no write operations to perform, reads are processed continuously. This allows optimization for applications with continuous writes versus a more balanced back and forth data flow.

• **Note:** It is recommended that the application be characterized for compatibility with the write optimization enhancements before being used in a production environment.

Channel Properties — Advanced

This group is used to specify advanced channel properties. Not all drivers support all properties; so the Advanced group does not appear for those devices.

Property Groups	<input type="checkbox"/> Non-Normalized Float Handling	
General	Floating-Point Values	Replace with Zero
Write Optimizations	<input type="checkbox"/> Inter-Device Delay	
Advanced	Inter-Device Delay (ms)	0

Non-Normalized Float Handling: A non-normalized value is defined as Infinity, Not-a-Number (NaN), or as a Denormalized Number. The default is Replace with Zero. Drivers that have native float handling may default to Unmodified. Non-normalized float handling allows users to specify how a driver handles non-normalized IEEE-754 floating point data. Descriptions of the options are as follows:

- **Replace with Zero:** This option allows a driver to replace non-normalized IEEE-754 floating point values with zero before being transferred to clients.
- **Unmodified:** This option allows a driver to transfer IEEE-754 denormalized, normalized, non-number, and infinity values to clients without any conversion or changes.

Note: This property is disabled if the driver does not support floating-point values or if it only supports the option that is displayed. According to the channel's float normalization setting, only real-time driver tags (such as values and arrays) are subject to float normalization. For example, EFM data is not affected by this setting.

For more information on the floating-point values, refer to "How To ... Work with Non-Normalized Floating-Point Values" in the server help.

Inter-Device Delay: Specify the amount of time the communications channel waits to send new requests to the next device after data is received from the current device on the same channel. Zero (0) disables the delay.

Note: This property is not available for all drivers, models, and dependent settings.

Channel Properties — UA Server

The UA Server properties specify the UA server endpoint to which the OPC UA Client Driver connects. OPC UA servers can have one or more UA endpoints, each of which is hosted on a different port or contains a different set of security options.

Property Groups	<input type="checkbox"/> Endpoint	
General	Endpoint URL	opc.tcp://localhost:49320
Write Optimizations	Security Policy	Basic256Sha256 <input type="text"/>
Advanced	Message Mode	Sign and Encrypt
UA Server		
UA Session		
Authentication		

Endpoint URL: This property specifies the endpoint's URL. Each endpoint has a unique URL. To locate a URL, click ... to invoke the [OPC UA Server Browser](#). The browser returns the selected endpoint's URL, Security Policy, and Message Mode.

🔔 **Note:** It is not possible to browse for OPC UA Endpoints when connecting across the internet or multiple domains. For remote connections, the endpoint must be entered manually. To do so, users need the endpoint type ("opc.tcp://"), the endpoint host name (IP address, URL, or DSN), followed by the endpoint port number separated by a colon.

Security Policy: This property specifies the endpoint's security policy. There are four options, listed in order from most secure to least secure: **Basic256Sha256**, **Basic256**, **Basic128Rsa15**, and **None**. The default is **Basic256Sha256**. Security Policies Basic128Rsa15 and Basic256 have been deprecated by the OPC Foundation as of OPC UA specification version 1.04. The encryption provided by these policies is considered to be less secure and usage should be limited to providing backward compatibility. When any policy besides **None** is chosen, the connection requires that the OPC UA Client Driver and the UA Server swap certificates.

🔔 *For more information, refer to [Certificate Model](#).*

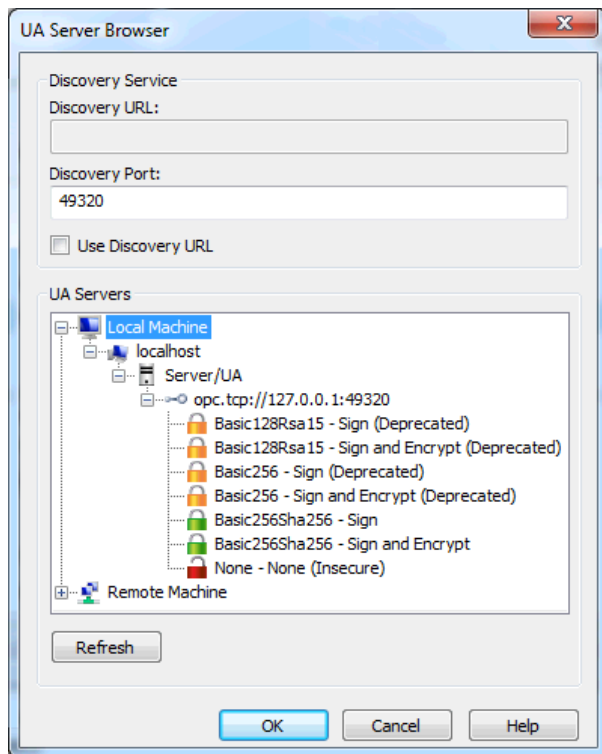
Message Mode: This property specifies the mode of encryption to use when messages between the driver and server are sent. There are three options: **None**, **Sign**, and **Sign and Encrypt**. The default is Sign and Encrypt. Descriptions of the options are as follows:

- **None:** This mode is the least secure, but is also the fastest.
- **Sign:** This mode is more secure but can slow down communications. When used, a checksum is added to the end of the message to ensure that the contents arrive clear and unaltered.
- **Sign and Encrypt:** This mode is more secure but can slow down communications. When used, a checksum that has been encrypted using the encryption method selected in Security Policy is added to the end of the message to ensure that the contents arrive clear and unaltered.

🔔 UA endpoints support pairs of security policies and message modes. For example, a server may support a security policy None and a message mode of None to form a 'None, None' pair. Likewise, an endpoint may support a 'Basic128Rsa15, Sign and Encrypt' pair. When configuring the Security Policy and Message Mode, make sure that the UA endpoint supports the pair.

Channel Properties — UA Server Browser

The OPC UA Server Browser is used to locate OPC UA servers and to select an OPC UA endpoint for connection.



Discovery URL: This property is used to browse for OPC UA servers. The URL may be set to automatically browse a specific Discovery Service or OPC UA server on the network, thus causing the browser to always begin browsing at that location. This property is disabled if **Use Discovery URL** is disabled.

Discovery Port: This property specifies the discovery port of the endpoint of interest. The discovery port is the OPC UA port to be scanned on remote machines when browsing machines through the UA Servers tree.

Use Discovery URL: When checked, the UA Servers tree is filled with OPC UA Servers located through the Discovery URL. When unchecked, the UA Server's tree is filled with network nodes, allowing users to browse the network for UA servers. When browsing, only the Discovery Port and Local Discovery Service port (4840) are scanned for UA servers.

UA Servers: This property is used to browse for OPC UA servers and OPC server endpoints. To select an endpoint, users may either double-click on an endpoint policy or select it and then press **OK**. To refresh the selected node, users may right-click on it and then select **Refresh**.

Some security policies have been deprecated by the OPC UA Foundation and are considered to be less secure. These are indicated in the browse dialog with a closed orange lock as well as the (Deprecated) text. Additionally, the None security policy is considered insecure and indicated with an open red lock and (Insecure) text. The closed green lock indicates endpoints using more secure security policies.

Refresh: This property creates the entire UA Servers tree again with updated content. It applies any changes made in the Discovery Service group.

Channel Properties — UA Session

The UA Session group is used to configure connection timeouts and retry intervals settings.

Property Groups	UA Session	
General	Connection Timeout (s)	30
Write Optimizations	Idle Session Timeout (min)	20
Advanced	Channel Renewal Interval (min)	60
UA Server	Reconnect Interval (s)	5
UA Session	Watchdog Interval (s)	5
Authentication		

Connection Timeout: Specifies the maximum amount of time that the channel waits to successfully connect after making a connect call. A shorter timeout makes the application more responsive; a longer timeout gives the channel a better chance of connecting. The valid range is 1 to 30. The default is 30 seconds.

Idle Session Timeout: Specifies the maximum number of minutes a session remains open without activity. If the client fails to issue a request within this interval, the server automatically terminates the connection. The valid range is 1 to 20. The default is 20 minutes.

Channel Renewal Interval: Specifies the time period between channel renewals in minutes. The driver automatically renews the security of the channel after 75% of this time expires. Decreasing this time makes the channel / connection more secure, but it may also slow the transfer of information. The valid range is 10 to 60. The default is 60 minutes.

Reconnect Interval: Specifies the rate at which the channel attempts to reconnect if it either fails to connect or becomes disconnected. The valid range is 5 to 600. The default is 5 seconds. The interval between connection attempts is at least the rate specified by Reconnect Interval, but may be longer if the Connection Timeout interval is longer than the Reconnect Interval.

Watchdog Interval: Specifies the rate at which the channel reads the remote Server Status node for updates on the server, as well as the timeout period for those reads. The results of this read is used to:

- Begin attempting to reconnect if the read fails or times out
- Handle the case where the server is shutting down.

● **Note:** If the channel determines that it has become disconnected as a result of the watchdog read failing, it waits the Reconnect Interval before attempting to reconnect. The timeout used during the reconnection attempt is specified by the Connection Timeout property.

Channel Properties — Authentication

OPC UA supports user authentication for increased security. The Authentication properties set a valid **Username** and **Password**, which are required for certain OPC UA endpoints. The driver encrypts the password using the server's public key and the encryption algorithm defined by the security policy of the server's endpoint description.

Property Groups	<input checked="" type="checkbox"/> Authentication	
General	Username	
Write Optimizations	Password	*****
Advanced		
UA Server		
UA Session		
Authentication		

Device Properties — General

Property Groups	<input checked="" type="checkbox"/> Identification	
General	Name	Device1
Scan Mode	Description	
Subscription	Channel Assignment	Channel1
Communication Parameters	Driver	OPC UA Client
Connection	Model	OPC UA
Monitored Items	<input checked="" type="checkbox"/> Operating Mode	
Tag Generation	Data Collection	Enable
Redundancy	Simulated	No

Identification

Name: User-defined identity of this device.

Description: User-defined information about this device.

Channel Assignment: User-defined name of the channel to which this device currently belongs.

Driver: Selected protocol driver for this device.

Model: The specific version of the device.

Operating Mode

Data Collection: This property controls the device's active state. Although device communications are enabled by default, this property can be used to disable a physical device. Communications are not attempted when a device is disabled. From a client standpoint, the data is marked as invalid and write operations are not accepted. This property can be changed at any time through this property or the device system tags.

Simulated: This option places the device into Simulation Mode. In this mode, the driver does not attempt to communicate with the physical device, but the server continues to return valid OPC data. Simulated stops physical communications with the device, but allows OPC data to be returned to the OPC client as valid data. While in Simulation Mode, the server treats all device data as reflective: whatever is written to the simulated device is read back and each OPC item is treated individually. The item's memory map is based on the group Update Rate. The data is not saved if the server removes the item (such as when the server is reinitialized). The default is No.

● **Notes:**

1. This System tag (`_Simulated`) is read only and cannot be written to for runtime protection. The System tag allows this property to be monitored from the client.
2. In Simulation mode, the item's memory map is based on client update rate(s) (Group Update Rate for OPC clients or Scan Rate for native and DDE interfaces). This means that two clients that reference the same item with different update rates return different data.

🔴 Simulation Mode is for test and simulation purposes only. It should never be used in a production environment.

Device Properties — Scan Mode

The Scan Mode specifies the subscribed-client requested scan rate for tags that require device communications. This setting works differently in this driver than in other drivers. Instead of determining the rate of device communications, it determines the rate that newly cached values are available to subscribed clients. It does not affect the rate of reads sent to the target server. Read frequency is controlled entirely by static settings configured in [Device Properties — Subscription](#). Generally, Scan Mode should be left in its default state. Synchronous and asynchronous device reads and writes are processed as soon as possible; unaffected by the Scan Mode properties.

🔴 **Note:** In this driver, tag reads occur at the rate defined in [Device Properties — Subscription](#) regardless of the Scan Mode setting.

Property Groups	Scan Mode	
General	Scan Mode	Respect Client-Specified Scan Rate ▼
Scan Mode	Initial Updates from Cache	Disable

Scan Mode: Specify how tags in the device are scanned for updates sent to subscribing clients. Descriptions of the options are:

- **Respect Client-Specified Scan Rate:** This mode uses the scan rate requested by the client.
- **Request Data No Faster than Scan Rate:** This mode specifies the value set as the maximum scan rate. The valid range is 10 to 99999990 milliseconds. The default is 1000 milliseconds.
 - 🔴 **Note:** When the server has an active client and items for the device and the scan rate value is increased, the changes take effect immediately. When the scan rate value is decreased, the changes do not take effect until all client applications have been disconnected.
- **Request All Data at Scan Rate:** This mode forces tags to be scanned at the specified rate for subscribed clients. The valid range is 10 to 99999990 milliseconds. The default is 1000 milliseconds.
- **Do Not Scan, Demand Poll Only:** This mode does not periodically poll tags that belong to the device nor perform a read to get an item's initial value once it becomes active. It is the OPC client's responsibility to poll for updates, either by writing to the `_DemandPoll` tag or by issuing explicit device reads for individual items. *For more information, refer to "Device Demand Poll" in server help.*
- **Respect Tag-Specified Scan Rate:** This mode forces static tags to be scanned at the rate specified in their static configuration tag properties. Dynamic tags are scanned at the client-specified scan rate.

Initial Updates from Cache: When enabled, this option allows the server to provide the first updates for newly activated tag references from stored (cached) data. Cache updates can only be provided when the new item reference shares the same address, scan rate, data type, client access, and scaling properties. A device read is used for the initial update for the first client reference only. The default is disabled; any time a client activates a tag reference the server attempts to read the initial value from the device.

Device Properties — Subscription

The Subscription group is used to configure data updates to be received for monitored items.

Property Groups	<input checked="" type="checkbox"/> Subscription	
General	Publishing Interval (ms)	1000
Scan Mode	Max Notifications per Publish	0
Subscription	Update Mode	Exception
Communication Parameters		
Connection		
Monitored Items		
Tag Generation		
Redundancy		

Publishing Interval: Specify the rate, in milliseconds, at which tags are updated by the driver. If the value is not supported by the OPC UA server, the value is negotiated during the connection. The valid range is 50 to 60000. The default is 1000 milliseconds.

Max. Notifications Per Publish: Specify the maximum number of notifications that the server sends to the driver in a single publish response. If the value is too low, the server may drop tag updates if it cannot send them fast enough. A value of 0 means there is no limit. The valid range is 0 to 9,999,999,999. The default is 0.

Update Mode: Select the way the subscription is updated. There are two options: **Exception** and **Poll**. In Exception Mode, a subscription tag is updated at the publishing interval if the data changes. In Poll Mode, an asynchronous read is performed on all subscription tags at the rate of the publishing interval. The default is Exception.

Registered Read / Write: Registers tags with the UA server to optimize read / write operations when the subscription Update Mode is Poll. Tags remain registered with the server while referenced by a server client. The default value is Enabled.

Device Properties — Communications Parameters

The Communications Parameters configure the subscription's read / write properties.

Property Groups	<input checked="" type="checkbox"/> Request Size	
General	Max. Items per Read	512
Scan Mode	Max. Items per Write	512
Subscription	<input checked="" type="checkbox"/> Asynchronous Request Timeout	
Communication Parameters	Read Timeout (ms)	1000
Connection	Write Timeout (ms)	1000
Monitored Items	<input checked="" type="checkbox"/> Write Behavior	
Tag Generation	Read after Write	Enable
Redundancy	<input checked="" type="checkbox"/> Initial Update	
	Initial Update Timeout (s)	5000

Request Size

Max. Items per Read: Specify the maximum number of items per read call to the server. Since reads are more efficient when grouped together, this value should be kept as high as possible to decrease read times.

The valid range is 1 to 4096. The default is 512. This property is also used during [tag generation](#) to read the attributes of tags necessary to validate and import them.

Max. Items per Write: Specify the maximum number of items per write call to the server. Since writes are more efficient when grouped together, this value should be kept as high as possible to decrease write times. The valid range is 1 to 512. The default is 512.

Asynchronous Request Timeout

Read Timeout: Specify the time the server waits for each read call (in milliseconds). Shorter timeouts may cause reads to timeout. Longer timeouts may cause the driver to be less responsive if communication is interrupted. The valid range is 100 to 30000. The default is 1000.

Write Timeout: Specify the time the server waits for each write call (in milliseconds). Shorter timeouts may cause writes to timeout. Longer timeouts may cause the driver to be less responsive if communication is interrupted. The valid range is 100 to 30000. The default is 1000.

Write Behavior

Read after Write: Choose Enable to force an explicit read after a write command (to confirm the new value). Choose Disable to update after the next publish or poll response. The default is Enable.

Initial Update

Initial Update Timeout: Specify the time, in milliseconds, the driver waits for the initial update. Shorter timeouts may cause tags to have bad quality; longer timeouts may cause the driver to be less responsive if communication is interrupted. The valid range is 1000 to 300000. The default is 5000.

Device Properties — Connection

The Connection group configures subscription timeout and keep-alive properties.

Property Groups	[-] Connection	
General	Lifetime Count	60
Scan Mode	Keep-Alive Count	5
Subscription	Priority	Lowest
Communication Parameters		
Connection		
Monitored Items		
Tag Generation		
Redundancy		

Lifetime Count: Specify how many times the publishing interval can expire without the OPC UA Client Driver sending data updates or keep alive messages before the server deletes the subscription. The larger the lifetime count, the longer the subscription remains running if communication is interrupted. The valid range is 3 to 300. The default is 60.

Keep-Alive Count: Specify the number of publishing intervals that must expire before a keep-alive message is sent. The valid range is 1 to 10. The default is 5.

● **Note:** Smaller Keep-Alive Counts increase the amount of communication during periods when little data is transferred between the OPC UA Client Driver and UA server. Larger Keep-Alive Counts decrease the

amount of communication during these periods but also make the driver less responsive when the connection is interrupted.

Priority: Select the relative priority of the subscription. When more than one subscription needs to send notifications, the OPC UA Server sends data from the subscription with the highest priority first. Applications that do not require special priority should be set to the lowest priority possible. The default is lowest.

Device Properties — Monitored Items

Subscriptions contain monitored items, also called tags. The Monitored Items group is used to configure how fast tags are updated as well as how tag updates are handled by the OPC UA server.

Property Groups	Monitored Items	
General	Sample Interval (ms)	500
Scan Mode	Queue Size	1
Subscription	Discard Oldest	Enable
Communication Parameters	Deadband Type	None
Connection	Deadband Value	0
Monitored Items		
Tag Generation		
Redundancy		

Sample Interval: Specify the fastest rate at which the monitored items are updated. A value of -1 defaults the interval to the subscription's Publishing Interval. A value of zero indicates that the OPC UA Server should use the fastest practical rate. The valid range is -1 to 50000. The default is 500 milliseconds, which is half of the default Publishing Interval.

Caution: If data is changing faster than the Publishing Interval, the Sample Interval must be set to half the Publishing Interval. This ensures data updates at the Publishing Interval. For example, if the Publishing Interval is 10000 ms and data is changing every 100 ms, the Sample Interval must be at least 5000 ms. This ensures data updates every 10000 ms.

Queue Size: Specify the number of data updates that the OPC UA Server queues for the subscription. A value of 1 disables queuing. Values greater than 1 enable queuing. The valid range is 1 to 100. The default is 1.

Discard Oldest: Specify the discard policy of the queue. When enabled, the oldest notification in the queue is discarded and is not sent to the driver. When disabled, the newest notification is discarded and not sent to the driver. The default is enabled.

Note: Notifications are only discarded if the queue fills up before the Publishing Interval expires.

Deadband Type: Specify the type of deadband filter to be applied to data changes. There are three options: **None**, **Percent**, and **Absolute**. **None** disabled deadband. **Percent** sends data updates only if the change is larger than a percentage of the maximum range for the tag. **Absolute** sends data updates if the change is greater than a specified value. The valid range is 0 to 9,999,999,999. The default is **None**.

Deadband Value: Specify the value of the deadband. If the Deadband Type is set to Percent, this value is a percentage (such as, 10=10%). If the Deadband Type is set to Absolute, this value is the exact value. The valid range is 0 to 9,999,999,999. The default is 0.

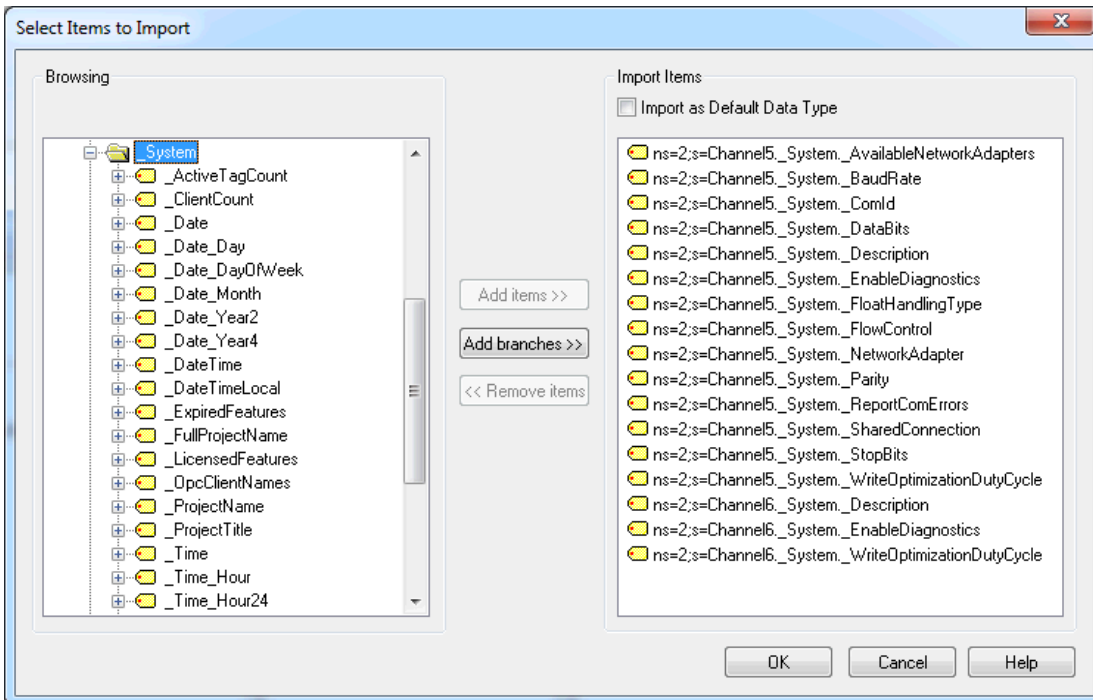
Device Properties — Tag Generation

Import launches a browser through which tags may be imported from the OPC UA Server. Click **Select import items...** to launch the tag browser.



Select Items to Import

The OPC UA Tag Browser is used to browse the OPC UA Server that is connected to the parent channel.



Browsing: Provides a tree that represents the OPC UA Server's hierarchy. It includes all OPC UA Server tags and tag groups.

Import as Default Data Type: When enabled, the Data Type for imported items is set to Default.

Add Items: Adds the items selected in the Browsing tree to the Import Items list.

Add Branches: Adds all items under the selected branch in the Browsing tree to the Import Items list.

Remove Items: Removes the items selected from the Items list.

Import Items: A list of all the items imported by the device.

Device Properties — Redundancy

Property Groups General Scan Mode Timing Auto-Demotion Tag Generation Tag Import Settings Redundancy	☐ Redundancy	
	Secondary Path	Channel.Device1 ...
	Operating Mode	Switch On Failure
	Monitor Item	
	Monitor Interval (s)	300
	Return to Primary ASAP	Yes

Redundancy is available with the Media-Level Redundancy Plug-In.

● Consult the website, a sales representative, or the [user manual](#) for more information.

Address Descriptions

OPC UA Client Driver addresses have the following syntax: *ns=<namespace index>;<type>=<value>*. For more information, refer to the table below.

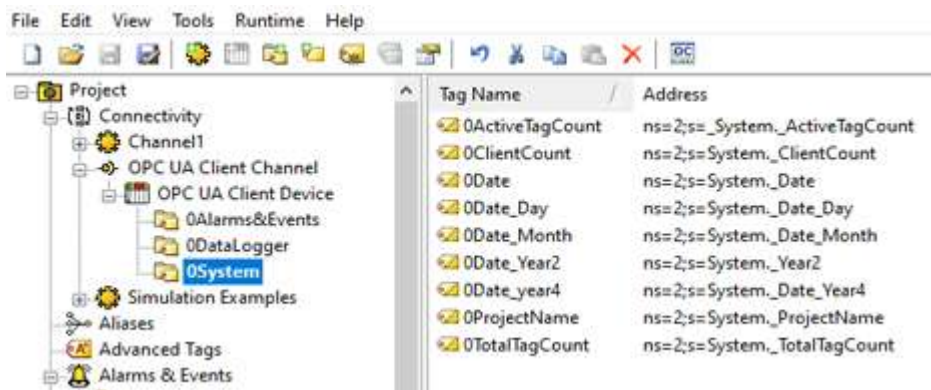
● **Note:** Arrays are supported for all data types.

Field	Description
Namespace Index	The index of the OPC UA Server namespace in which the address resides. If the index is 0, the entire <i>ns=<namespace index>;</i> clause is omitted.
Type	The type of address. OPC UA supports the following four address types: i: A numeric address represented with 32-bit unsigned integer s: A string address containing characters that can be encoded using UTF-8 g: A GUID address in the format of {XXXXXXXX-XXXX-XXXX-XXXX-XXXXXXXXXXXX} b: An opaque address (such as a byte string)
Value	The address that is formatted as a string. This address may be numeric, string, GUID, or opaque.

Examples

Address Type	Namespace	Example
Numeric	2	ns=2;i=13
String	3	ns=3;s=Channel1.Device1.Tag1
GUID	0	g={C496578A-0DFE-4B8F-870A-745238C6AEAE}
Opaque	2	ns=2;b=M/RbKBsRVkePCePcx24oRA==

● For more examples of OPC UA addresses, refer to the image below.



Data Types Description

Data Type	Description
Boolean	Single bit
Byte	Unsigned 8-bit value bit 0 is the low bit bit 7 is the high bit
Char	Signed 8-bit value bit 0 is the low bit bit 6 is the high bit bit 7 is the sign bit
Date	Date YYYY-MM-DDTHH:MM:SS.MMM
Double	64-bit floating point value
DWord	Unsigned 32-bit value bit 0 is the low bit bit 31 is the high bit
Float	32-bit floating point value. The driver interprets two consecutive 16 bit registers as a floating point value by making the second register the high word and the first register the low word.
Long	Signed 32-bit value bit 0 is the low bit bit 30 is the high bit bit 31 is the sign bit
LongLong	Signed 64-bit value bit 0 is the low bit bit 62 is the high bit bit 63 is the sign bit
QWord	Unsigned 64-bit value bit 0 is the low bit bit 63 is the high bit
Word	Unsigned 16-bit value bit 0 is the low bit bit 15 is the high bit
Short	Signed 16-bit value bit 0 is the low bit bit 14 is the high bit bit 15 is the sign bit
String	Null-terminated character array

OPC UA Data Types

The OPC UA Client Driver supports built-in, simple, enumeration, and some complex and structured OPC UA data types. A description of these types and support information are included in the tables below.

Supported UA Types

Category	Description
Built-in Types	Built-in types are fundamental OPC UA types that are used to define all structures, arrays, and messages. <i>For more information, refer to the table below.</i> <ul style="list-style-type: none"> Note: The OPC UA Client Driver supports importing variables as scalar and array tags for all types except ByteString (scalar only), ExtensionObject (supported UA standard types only), DataValue, and DiagnosticInfo.
Simple Types	Simple types derive from built-in types, use the built-in type encoding, and have different application-layer semantics. The driver supports all scalar and array simple types that derive from a supported built-in type. The driver reads simple type information from the server when importing tags to assign the correct tag data type.
Enumeration Types	All enumeration types are encoded the same as OPC UA Int32 types. Tags for OPC UA Enumerations use the Long data type.
Structured Types	Many structured types defined in the UA specification are supported by the OPC UA Client Driver as Strings. The driver can read and monitor these structured types, but writes are not currently supported. <i>See the Supported Structured Data Types table below for the list of supported structured types.</i>
Complex Types	Complex types comprise several scalar / array Built-in types, Simple types, Enumerations, and/or Structures. During tag import the OPC UA Client Driver browses the components of a complex variable node and generates tags for each of the built-in, simple, enumeration, or supported structured types. <ul style="list-style-type: none"> Note: The driver can read / write / monitor the components of a complex type but cannot read / write / monitor the complex variable value as an ExtensionObject. The driver also relies on the type information available in the UA Server's address space to generate tags for the component of a complex variable.

Built-In Data Types

OPC UA Types	OPC UA Client Driver Data Type
Boolean	Boolean
SByte	Char
Byte	Byte
Int16	Short
UInt16	Word
Int32	Long
UInt32	DWord
Int64	LongLong
UInt64	QWord
Float	Float
Double	Double

OPC UA Types	OPC UA Client Driver Data Type
String	String
DateTime	Date/DateTime
GUID	String
ByteString	Array of Byte
XmlElement	String
NodeId	String
ExpandedNodeId	String
StatusCode	DWord
QualifiedName	String
LocalizedText	String
ExtensionObject	<i>See Supported Structured Data Types table below.</i>
DataValue	Not supported
Variant	Supported built-in types
DiagnosticInfo	Not supported

Supported Structured Data Types

The following structured data types have fields that are read and displayed in a string tag.

Format of the string value displayed in the tag:

(<keyword>=<value> | <keyword>=<value>)

Example of the tag value of a property of type TimeZoneDataType:

(offset=15 | daylightSavingInOffset=true)

Example of the tag value of a property of type EnumValueType which includes nested LocalizedText structured data types:

(value=5 | displayName=(locale=en-US | text=Text) | description=(locale=en-US | text=Text))

Data Types	OPC UA Client Driver Data Type	Keywords
EnumValueType	String	value, displayName (locale, text), description (locale, text)
EUInformation	String	namespaceUri, unitId, displayName (locale, text), description (locale, text)
Range	String	low, high
ServiceCounterDataType	String	totalCount, errorCount
TimeZoneDataType	String	offset, daylightSavingInOffset
ApplicationDescription	String	applicationUri, productUri, applicationName, applicationType, gatewayServerUri, discoveryProfileUri, discoveryUrls

Event Log Messages

The following information concerns messages posted to the Event Log pane in the main user interface. Consult the OPC server help on filtering and sorting the Event Log detail view. Server help contains many common messages, so should also be searched. Generally, the type of message (informational, warning) and troubleshooting information is provided whenever possible.

Error Descriptions

The following event log messages, message boxes, and explanations may be generated. Click on the link for a list.

[Event Log Messages](#)

[Message Boxes](#)

[Explanations](#)

Channel failed to connect.

Error Type:

Error

Possible Cause:

The connection to the OPC UA server failed.

Possible Solution:

Review the explanation given.

See Also:

[Explanations](#)

Channel failed to connect. |

Error Type:

Error

Possible Cause:

The connection to the OPC UA server failed.

Possible Solution:

Review the explanation given.

See Also:

[Explanations](#)

Channel failed to connect. | Status description = '<status>', Status code = <code>.

Error Type:

Error

Possible Cause:

The connection to the OPC UA server failed.

Possible Solution:

1. Make sure the endpoint, security, and user identity configuration of the client and server are compatible.
2. Review the explanation given.

See Also:

Explanations

Channel failed to connect. Use the OPC UA Configuration Manager to ensure the client certificate is valid.

Error Type:

Error

Possible Cause:

1. The OPC UA Driver certificate is missing or invalid.
2. The OPC UA server certificate is not available.

Possible Solution:

Use the OPC UA Configuration Manager to verify that the OPC UA Client Driver certificate is valid and swap certificates with the OPC UA server.

Channel failed to connect. Use the OPC UA Configuration Manager to ensure the client certificate is valid. |

Error Type:

Error

Possible Cause:

1. The OPC UA Driver certificate is missing or invalid.
2. The OPC UA server certificate is not available.

Possible Solution:

Use the OPC UA Configuration Manager to verify that the OPC UA Client Driver certificate is valid and swap certificates with the OPC UA server.

Channel failed to connect. Use the OPC UA Configuration Manager to ensure the client certificate is valid. | Status description = '<status>', Status code = <code>.

Error Type:

Error

Possible Cause:

1. The OPC UA Driver certificate is missing or invalid.
2. The OPC UA server certificate is not available.

Possible Solution:

Use the OPC UA Configuration Manager to verify that the OPC UA Client Driver certificate is valid and swap certificates with the OPC UA server.

Add item failed on device. | Tag address = '<address>',**Error Type:**

Error

Possible Cause:

1. The item is invalid.
2. The OPC UA server is not running.
3. The device call timeout is too short.

Possible Solution:

1. Verify the OPC UA server is running and responsive.
2. Increase the device call timeout.
3. Verify the item is valid for the OPC UA server.

See Also:

Explanations

Add item failed on device. | Tag address = '<address>', Status description = '<status>', Status code = <code>.**Error Type:**

Error

Possible Cause:

1. The item is invalid.
2. The OPC UA server is not running.
3. The device call timeout is too short.

Possible Solution:

1. Verify the OPC UA server is running and responsive.
2. Increase the device call timeout.
3. Verify the item is valid for the OPC UA server.

See Also:

Explanations

Remove item failed on device. | Tag address = '<address>',

Error Type:

Error

Possible Cause:

1. The OPC UA server is down.
2. The device's call timeout is too short to complete the removal.

Possible Solution:

1. Verify that the OPC UA server is running and responsive.
2. Increase the device's call timeout.
3. Review the explanation.

See Also:

Explanations

Remove item failed on device. | Tag address = '<address>', Status description = '<status>', Status code = <code>.

Error Type:

Error

Possible Cause:

1. The OPC UA server is down.
2. The device's call timeout is too short to complete the removal.

Possible Solution:

1. Verify that the OPC UA server is running and responsive.
2. Increase the device's call timeout.
3. Review the explanation.

See Also:

Explanations

Failed to remove items on device. |

Error Type:

Error

Possible Cause:

1. The OPC UA server is down.
2. The device's call timeout is too short to complete the removal.

Possible Solution:

1. Verify that the OPC UA server is running and responsive.
2. Increase the device's call timeout.
3. Review the explanation.

See Also:

Explanations

Failed to remove items on device. | Status description = '<status>', Status code = <code>.

Error Type:

Error

Possible Cause:

1. The OPC UA server is down.
2. The device's call timeout is too short to complete the removal.

Possible Solution:

1. Verify that the OPC UA server is running and responsive.
2. Increase the device's call timeout.
3. Review the explanation.

See Also:

Explanations

Failed to browse endpoints.

Error Type:

Error

Failed to browse tags.

Error Type:

Error

Channel rejected the server certificate. Use the OPC UA Configuration Manager to add the certificate to the trusted servers list. | Server = '<name>'.

Error Type:

Error

Reconnecting server due to shutdown notification.

Error Type:

Warning

Possible Cause:

The OPC UA Server is not running. The channel failed to add a subscription for the device. No tags are updated for the subscription.

Possible Solution:

1. Verify the OPC UA Server is running.
2. Review the explanation.

See Also:

Explanations

Invalid session ID encountered. Attempting to reconnect...

Error Type:

Warning

Failed to add subscription for device. |

Error Type:

Warning

Possible Cause:

The OPC UA Server is not running.

Possible Solution:

Verify the OPC UA Server is running.

Failed to add subscription for device. | Status description = '<status>', Status code = <code>.

Error Type:

Warning

Possible Cause:

The OPC UA Server is not running. The channel failed to add a subscription for the device. No tags are updated for the subscription.

Possible Solution:

1. Verify the OPC UA Server is running.
2. Review the explanation.

See Also:

Explanations

Reconnecting server due to connection loss.

Error Type:

Warning

Async write failed. | Tag address = '<address>', Callback item error = <code>.

Error Type:

Warning

Possible Cause:

1. The device call timeout is too short.
2. The server became unresponsive during the write.

Possible Solution:

1. Verify the OPC UA Server is running and responsive.
2. Increase the device call timeout.

Tag was not imported. The item failed validation. | Tag name = '<name>'.

Error Type:

Warning

Possible Cause:

1. The driver failed to read the tag attributes.
2. The driver could not import the tags due to an unsupported data type or invalid data type mapping in the server.

Possible Solution:

1. Verify that the tag is valid on the OPC UA Server to which it is being connected.
2. In Project Properties for OPC UA, locate and disable address hints.
3. Verify that the tag data types and mappings are valid on the OPC UA Server (Project Properties | OPC UA).

● **Note:**

Some tags cannot be resolved when using a tunneling architecture.

Unknown data type for tag. Using default. | Tag name = '<name>'.

Error Type:

Warning

Possible Cause:

1. The target server did not return a data type.
2. The data type entered is not supported by the driver.

Possible Solution:

1. The server determines the data type once a client is connected.
2. Enter a data type that is supported by the driver.

Read request timeout on device.

Error Type:

Warning

Possible Cause:

1. The device is in Polled Mode and the OPC UA Server has become unresponsive.
2. The device call timeout is too short.

Possible Solution:

1. Verify the OPC UA Server is running and responsive.
2. Increase the device call timeout.

Write request timeout on device.

Error Type:

Warning

Possible Cause:

1. The OPC UA Server is unresponsive.
2. The device call timeout is too short.

Possible Solution:

1. Verify the OPC UA Server is running and responsive.
2. Increase the device call timeout.

Note:

1. Writes in a transaction may succeed or fail after a timeout.
2. The driver stopped waiting for the write request to complete. The write may succeed or fail, but the driver stopped reporting the result.

Item is write only. | Item ID = '<ID>'.

Error Type:

Warning

Possible Cause:

An item imported manually or through the OPC UA Tag Browser is write only.

Possible Solution:

Remove the item from the device if it is not needed.

The authentication information for channel was cleared because a password was provided with no username.

Error Type:

Warning

Possible Cause:

An XML project contains a channel that has an authentication password, but no user name.

Possible Solution:

1. Edit the XML file to add a user name to accompany the password.
2. Configure the password and user name in the channel properties and save the project as XML.

The Publishing Interval for device has been set by the server. | New interval = <number> (milliseconds), Requested interval = <number> (milliseconds).

Error Type:

Warning

Possible Cause:

The device Publishing Interval is not supported by the server.

Possible Solution:

Change the Publishing Interval to one supported by the UA Server.

The lifetime count for device has been set by the server. | New count = <number>, Requested count = <number>.

Error Type:

Warning

Possible Cause:

1. The device's lifetime count is not supported by the server.
2. The lifetime count may have conflicted with the minimum timeout interval.

Note:

The lifetime count controls the number of subscription publish intervals that can expire before the server deletes the subscription. To prevent subscriptions from being deleted, some servers enforce a minimum lifetime count to ensure that the timeout interval (publish interval * lifetime count) is reasonable. This error may occur when connecting to the server (if the timeout interval is less than 30 seconds). If so, the server adjusts the lifetime count so the timeout interval is exactly 30 seconds.

The maximum keep-alive count for device has been set by the server. | New count = <number>, Requested count = <number>.

Error Type:

Warning

Possible Cause:

The device maximum keep-alive is not supported by the server.

Possible Solution:

Change the maximum keep-alive to one supported by the UA Server.

The session timeout for channel has been set by the server. | New timeout = <number> (milliseconds), Requested timeout = <number> (milliseconds).

Error Type:

Warning

Possible Cause:

The channel session timeout is not supported by the server.

Possible Solution:

Change the session timeout to one supported by the UA Server.

The renewal period for channel has been set by the server. | New period = <number> (milliseconds), Requested period = <number> (milliseconds).

Error Type:

Warning

Possible Cause:

The channel renewal time is not supported by the server.

Possible Solution:

Change the renewal time to one supported by the UA Server.

Deadband was not applied to item. The item does not support deadband. | Item ID = '<ID>'.

Error Type:

Warning

Possible Cause:

Although deadband has been enabled for the device, it is not supported by a device tag.

Possible Solution:

1. Disable deadband for the device.
2. Remove the item from the device.

Note:

Not all UA server tags support deadband.

The driver's certificate expired. Use the OPC UA Configuration Manager to reissue the certificate.

Error Type:

Warning

Possible Cause:

The validity period of the certificate is before the current system date.

Possible Solution:

1. Import a non-expired certificate.
2. Re-issue the certificate to generate a new non-expired certificate.

Error encountered processing tags for import. No tags are imported.

Error Type:

Warning

There is no exact match for the configured endpoint URL in the UA Server. Attempting to connect using the configured URL. Channel endpoint URL = <address>, server endpoint description URL = <address>.

Error Type:

Warning

Possible Cause:

1. The channel has been configured to use a endpoint URL that is not one of the endpoints returned in a GetEndpoints response.
2. The client is attempting to connect with a hostname or IP address that doesn't match the server's configured endpoint.
3. The client is connecting through a router or firewall that forwards traffic to the UA Server using a different IP address, hostname, or port.

Possible Solution:

Use an endpoint URL that matches the endpoint configured in the UA Server when an exact match is required.

Unable to use registered read/write for tag '<address>'. | Status description = '<description>', Status code = <code>.

Error Type:

Warning

Possible Cause:

The UA Server doesn't support the RegisterNodes service.

Possible Solution:

Review the status description for more information.

Unable to obtain data type information from server. Tags of some data types may not be imported.

Error Type:

Warning

Possible Cause:

Server is currently handling too many operations.

Possible Solution:

Retry to import tags after short period of time.

Tag write failed. | Tag address = '<address>', Status description = '<status>', Status code = <code>.

Error Type:

Warning

Possible Solution:

Review the status code and description for more information.

**Subscription Lost. Re-establishing. | Status description = '<description>',
Status code = <code>.**

Error Type:

Warning

Possible Cause:

The OPC UA session is invalid due to an error between the OPC UA Client and Server.

Possible Solution:

Review the status description for more information.

**Read request failed on device. | Status description = '<description>',
Status code = <code>.**

Error Type:

Warning

Possible Solution:

Review the status code and description for more information.

**Array dimensions exceed two for tag. Tag cannot be imported. | Tag name
= '<name>'.**

Error Type:

Warning

Possible Cause:

Arrays of greater than two dimensions are not supported.

**UA data type not supported. Tag cannot be imported. | Tag name =
'<name>', Data type = '<type>'.**

Error Type:

Warning

Possible Cause:

The tag's data type (specified by the remote server) does not derive from a supported OPC UA built-in type.

**Unable to import tag. Tag access level is not current read or current write.
| Tag name = '<name>'.**

Error Type:

Warning

Possible Cause:

The tag's access level is not current read or current write. Tags with neither of these access levels are not supported by the driver.

Unable to read tag attributes during import. Tag cannot be imported. | Tag name = '<name>', Status description = '<status>', Status code = <code>.

Error Type:

Warning

Possible Cause:

The driver failed to read the tag attributes.

Possible Solution:

Verify that the tag is valid on the OPC UA Server to which it is being connected.

Note:

Some tags cannot be resolved when using a tunneling architecture.

Session watchdog read error. | Status description = '<status>', Status code = <code>.

Error Type:

Warning

Possible Cause:

The session watchdog read of the Server Status node failed or timed out.

Possible Solution:

1. Consider increasing the session watchdog interval to avoid timeout errors across slow networks.
2. The server is not responding to status read requests, the driver attempts to reconnect automatically.

UA data type not supported. Tag cannot be imported. | Tag name = '<name>', UA data type node id = '<type>'.

Error Type:

Warning

Possible Cause:

The tag's Variable type (specified by the remote server) is not supported or is not derived from a supported OPC UA built-in type.

Write request failed. Writes to this UA data type are not supported. | Tag address = '<address>', UA data type node id = '<node id>'.

Error Type:

Warning

Possible Cause:

The OPC UA data type is represented in a specially formatted string value in the tag. The driver does not support writing to this OPC UA data type.

Write request timeout on device. | Item ID = '<id>'

Error Type:

Warning

Possible Cause:

1. The OPC UA Server is unresponsive.
2. The device call timeout is too short.

Possible Solution:

1. Verify the OPC UA Server is running and responsive.
2. Increase the device call timeout.

Note:

1. Writes in a transaction may succeed or fail after a timeout.
2. The driver stopped waiting for the write request to complete. The write may succeed or fail, but the driver stopped reporting the result.

Unable to read tag. UA data type not supported. | Tag address = '<address>', UA data type node id = '<type>'.

Error Type:

Warning

Possible Cause:

1. The UA data type is an ExtensionObject of which the driver does not know the definition.
2. The driver does not support array dimensions greater than two.

Message Boxes

The following messages may be generated. Click on the link for a description of the message.

[Error encountered during import item browse. Server <server> may have stopped running.](#)

[Items on this page may not be changed while the driver is processing tags.](#)

[The Lifetime Count must be a minimum of three times the Max. Keep Alive Count \(Lifetime Count = <count>\).](#)

[Please enter a username.](#)

Error encountered during import item browse. Server <server> may have stopped running.

Error Type:

Message Box

Possible Cause:

The OPC UA Server disconnected while the OPC UA Client Driver was browsing for tags.

Solution:

Make sure that the OPC UA Server is running and available.

Items on this page may not be changed while the driver is processing tags.

Error Type:

Message Box

Possible Cause:

An attempt was made to change a channel or device configuration while clients were connected and receiving data. The edits made to the channel or device failed.

Solution:

Disconnect all data clients from the OPC Server before making any edits.

The Lifetime Count must be a minimum of three times the Max. Keep Alive Count (Lifetime Count = <count>).

Error Type:

Message Box

Possible Cause:

The entered lifetime count in the Keep Alive property is not at least three times the maximum keep-alive count. The edits made to the Keep Alive settings on the device failed.

Solution:

Enter a lifetime count that is at least three times the maximum keep alive count.

Please enter a username.

Error Type:

Message Box

Possible Cause:

A password was entered without a user name on the channel's Authentication page.

Solution:

Enter a user name along with the password.

Explanations

Some error messages include additional information under an explanation field. Click on the link for a description of the explanation.

[Cannot connect to the server.](#)

[The client certificate has expired. Please use the OPC UA Configuration manager to create a new certificate.](#)

[The client certificate is invalid. Please use the OPC UA Configuration Manager to update the client certificate.](#)

[The server certificate is revoked. Please use the OPC UA Configuration manager to update the certificate.](#)

[The server certificate is untrusted. Please use the OPC UA Configuration Manager to add the certificate to the client's trusted store.](#)

[Timeout trying to perform the operation.](#)

Cannot connect to the server.

Possible Cause:

The OPC UA Server is down or unreachable.

Result:

The connection failed.

Solution:

Make sure that the OPC UA Server is running and is available via the machine running the OPC UA Client Driver.

The client certificate has expired. Please use the OPC UA Configuration manager to create a new certificate.

Possible Cause:

The OPC UA Client certificate has expired.

Solution:

Create a new OPC UA Client Driver certificate using the OPC UA Configuration Manager.

The client certificate is invalid. Please use the OPC UA Configuration Manager to update the client certificate.

Possible Cause:

The OPC UA Client certificate is missing or invalid.

Solution:

Create a new OPC UA Client Driver certificate using the OPC UA Configuration Manager.

The server certificate is revoked. Please use the OPC UA Configuration Manager to update the certificate.

Possible Cause:

The OPC UA Client Driver has revoked the OPC UA server certificate, causing the connection to fail.

Solution:

1. Use the OPC UA Configuration Manager to swap certificates between the OPC UA Client Driver and the OPC UA server.
2. Remove the OPC UA server certificate from the driver's revoked list.

The server certificate is untrusted. Please use the OPC UA Configuration Manager to add the certificate to the client's trusted store.

Possible Cause:

The OPC UA Server certificate is not trusted by the client driver, which caused the connection to fail.

Solution:

Use the OPC UA Configuration Manager to swap certificates between the OPC UA Client Driver and the OPC UA server.

Timeout trying to perform the operation.

Possible Cause:

1. The call timeout settings are too short.
2. The OPC UA Server is unresponsive.

Solution:

1. Make sure that the OPC UA Server is running and responsive.
2. Increase the channel and device call timeouts.

Index

A

- Add item failed on device. | Tag address = '<address>', 29
- Add item failed on device. | Tag address = '<address>', Status description = '<status>', Status code = <code>. 29
- Address Descriptions 23
- AddressSpace Lookup Client Facet 7
- Array dimensions exceed two for tag. Tag cannot be imported. | Tag name = '<name>'. 39
- Async write failed. | Tag address = '<address>', Callback item error = <code>. 33
- Asynchronous Request Timeout 19
- Attribute Read Client Facet 7
- Attribute Write Client Facet 7
- Authentication 15

B

- Base Client Behavior Facet 7
- Boolean 24
- Branch 21
- Byte 24

C

- Cannot connect to the server. 43
- Certificate Model 8
- Channel Assignment 16
- Channel failed to connect. 27
- Channel failed to connect. | 27
- Channel failed to connect. | Status description = '<status>', Status code = <code>. 27
- Channel failed to connect. Use the OPC UA Configuration Manager to ensure the client certificate is valid. 28
- Channel failed to connect. Use the OPC UA Configuration Manager to ensure the client certificate is valid. | 28
- Channel failed to connect. Use the OPC UA Configuration Manager to ensure the client certificate is valid. | Status description = '<status>', Status code = <code>. 28
- Channel Properties — Advanced 12
- Channel Properties — General 10

Channel Properties — Write Optimizations 11
Channel rejected the server certificate. Use the OPC UA Configuration Manager to add the certificate to the trusted servers list. | Server = '<name>'. 32
Channel Renewal Interval 15
Char 24
Communication Parameters 18
Connection 19
Connection Timeout 15
Core Client Facet 7

D

Data Collection 16
Data Types Description 24
DataAccess Client Facet 7
DataChange Subscriber Client Facet 7
Date 24
Deadband 20
Deadband was not applied to item. The item does not support deadband. | Item ID = '<ID>'. 37
Device Properties — Redundancy 22
Diagnostics 10
Discard Oldest 20
Discovery 7
Do Not Scan, Demand Poll Only 17
Double 24
Driver 16
Duty Cycle 11
DWord 24

E

Endpoint URL 12
Error Descriptions 27
Error encountered during import item browse. Server <server> may have stopped running. 42
Error encountered processing tags for import. No tags are imported. 37
Event Log Messages 27
Exception 18
Explanations 43

F

Failed to add subscription for device. | 32

Failed to add subscription for device. | Status description = '<status>', Status code = <code>. 32

Failed to browse endpoints. 31

Failed to browse tags. 32

Failed to remove items on device. | 31

Failed to remove items on device. | Status description = '<status>', Status code = <code>. 31

Float 24

G

General 16

I

Identification 10

Idle Session Timeout 15

Initial Update 19

Initial Updates from Cache 17

Inter-Device Delay 12

Invalid session ID encountered. Attempting to reconnect... 32

Item is write only. | Item ID = '<ID>'. 35

Items on this page may not be changed while the driver is processing tags. 42

K

Keep Alive 19

L

Lifetime Count 19

Long 24

LongLong 24

M

Message Boxes 41

Message Mode 13
Model 16
Monitored Items 20

N

Non-Normalized Float Handling 12
Notifications Per Publish 18

O

OPC UA Client 6
OPC UA Data Types 25
Optimization Method 11
Overview 6

P

Please enter a username. 42
Poll 18
Priority 20
Profiles 7
Publishing Interval 18

Q

Queue Size 20
QWord 24

R

Re-establishing Connections 9
Read request failed on device. | Status description = '<description>', Status code = <code>. 39
Read request timeout on device. 34
Reconnect Interval 15
Reconnecting server due to connection loss. 33
Reconnecting server due to shutdown notification. 32
Redundancy 22

Registered Read/Write 18

Remove item failed on device. | Tag address = '<address>', 30

Remove item failed on device. | Tag address = '<address>', Status description = '<status>', Status code = <code>. 30

Replace with Zero 12

Request Size 18

Respect Tag-Specified Scan Rate 17

S

Sample Interval 20

Scan Mode 17

Security 15

Security Policy 13

SecurityPolicy - Basic128Rsa15 7

SecurityPolicy - Basic256 7

SecurityPolicy - Basic256Sha256 7

SecurityPolicy - None 7

Session watchdog read error. | Status description = '<status>', Status code = <code>. 40

Setup 9

Short 24

Simulated 16

String 24

Subscription 18

Subscription Lost. Re-establishing. | Status description = '<description>', Status code = <code>. 39

Supported OPC UA Server Profiles 7

T

Tag Counts 10

Tag Generation 21

Tag was not imported. The item failed validation. | Tag name = '<name>'. 33

Tag write failed. | Tag address = '<address>', Status description = '<status>', Status code = <code>. 38

The authentication information for channel was cleared because a password was provided with no user-name. 35

The client certificate has expired. Please use the OPC UA Configuration manager to create a new certificate. 43

The client certificate is invalid. Please use the OPC UA Configuration Manager to update the client certificate. 43

The driver's certificate expired. Use the OPC UA Configuration Manager to reissue the certificate. 37

The lifetime count for device has been set by the server. | New count = <number>, Requested count = <number>. 36

The Lifetime Count must be a minimum of three times the Max. Keep Alive Count (Lifetime Count = <count>). 42

The maximum keep-alive count for device has been set by the server. | New count = <number>, Requested count = <number>. 36

The Publishing Interval for device has been set by the server. | New interval = <number> (milliseconds), Requested interval = <number> (milliseconds). 35

The renewal period for channel has been set by the server. | New period = <number> (milliseconds), Requested period = <number> (milliseconds). 37

The server certificate is revoked. Please use the OPC UA Configuration Manager to update the certificate. 43

The server certificate is untrusted. Please use the OPC UA Configuration Manager to add the certificate to the client's trusted store. 44

The session timeout for channel has been set by the server. | New timeout = <number> (milliseconds), Requested timeout = <number> (milliseconds). 36

There is no exact match for the configured endpoint URL in the UA Server. Attempting to connect using the configured URL. Channel endpoint URL = <address>, server endpoint description URL = <address>. 38

Timeout trying to perform the operation. 44

Tunneling 8

U

UA-TCP UA-SC UA Binary 7

UA data type not supported. Tag cannot be imported. | Tag name = '<name>', Data type = '<type>'. 39

UA data type not supported. Tag cannot be imported. | Tag name = '<name>', UA data type node id = '<type>'. 40

UA Server 12

UA ServerBrowser 14

UA Session 15

Unable to import tag. Tag access level is not current read or current write. | Tag name = '<name>'. 39

Unable to obtain data type information from server. Tags of some data types may not be imported. 38

Unable to read tag attributes during import. Tag cannot be imported. | Tag name = '<name>', Status description = '<status>', Status code = <code>. 40

Unable to read tag. UA data type not supported. | Tag address = '<address>', UA data type node id = '<type>'. 41

Unable to use registered read/write for tag '<address>'. | Status description = '<description>', Status code = <code>. 38

Unknown data type for tag. Using default. | Tag name = '<name>'. 34

Unmodified 12

Update Mode 18

W

Watchdog Interval 15

Word 24

Write All Values for All Tags 11

Write Behavior 19

Write Only Latest Value for All Tags 11

Write Only Latest Value for Non-Boolean Tags 11

Write request failed. Writes to this UA data type are not supported. | Tag address = '<address>', UA data type node id = '<node id>'. 40

Write request timeout on device. 34

Write request timeout on device. | Item ID = '<id>' 41