

# Advanced Tags

© 2024 PTC Inc. All Rights Reserved.

# Table of Contents

<b>Advanced Tags</b> .....	<b>1</b>
<b>Table of Contents</b> .....	<b>2</b>
Help Contents .....	5
Overview .....	5
Plug-In Interface .....	6
<b>Advanced Tag Groups</b> .....	<b>7</b>
CSV Import/Export .....	7
<b>Advanced Tag Types</b> .....	<b>12</b>
Average Tags .....	13
Complex Tags .....	15
Derived Tags .....	17
Link Tags .....	19
Maximum Tags .....	23
Minimum Tags .....	25
Oracle Cumulative .....	26
Arithmetic Operators .....	28
Functions .....	29
Logic Tags .....	31
<b>Optimizing Performance</b> .....	<b>33</b>
<b>Error Message Descriptions</b> .....	<b>34</b>
Advanced Tag Messages .....	34
<Advanced tag name> is invalid. Verify the tag references valid server tags and does not contain any references to itself or to an unsupported or array data type. ....	34
<Tag name> has an invalid expression: <expression error>. ....	35
Failed to write to tag <tag name> from link tag <link tag name>. ....	35
References to array tags with an unsupported or array data type are not allowed <tag name>. ....	35
The complex tag already references <tag name> and will not be re-added. ....	36
The input and output tags cannot be the same. ....	36
The tag must be writeable. ....	36
The trigger and output tags cannot be the same. ....	36
Unable to start complete tag <tag name> for element <element> on tag <advanced tag name>. ....	36
Unable to start complete tag <tag name> on tag <advanced tag name>. ....	37
Unable to start element tag <tag name> on tag <advanced tag name>. ....	37
Unable to start required tag reference <reference> on tag <tag name>. ....	37
Unable to start required tag reference <reference> in expression <expression>. ....	38
Unable to start trigger tag <tag name> for element <element> on tag <advanced tag name>. ....	38

Unable to start trigger tag <tag name> on tag <advanced tag name>.	38
CSV Messages	39
Error importing CSV complex element record <record index>. Insert by <value> is invalid. Insert by set to 'Rate'.	39
Error importing CSV complex element record <record index>. Update rate <value><units> is out of range. Update rate has been set to <value><units>	40
Error importing CSV tag <tag name>. Comparison <comparison> is invalid. Comparison set to Trigger Tag == Value.	40
Error importing CSV tag <tag name>. Data type <data type> is not valid for the tag type. Data type has been changed to <data type>.	40
Error importing CSV tag <tag name>. Maximum value <max value> is out of range. Maximum value has been set to <max value>.	41
Error importing CSV tag <tag name>. Run by <value> is invalid. Run by set to 'Rate'.	41
Error importing CSV tag <tag name>. Run by rate <value><units> is out of range. Run by rate has been set to <value><units>.	41
Error importing CSV tag <tag name>. Link mode <link mode> is invalid. Link mode set to On Data Change of Input Tag.	41
Error importing CSV tag <tag name>. Trigger scan rate <value> <units> is out of range. Trigger scan rate has been set to <value> <units>.	42
Error importing CSV tag <tag name>. Link mode <link mode> is invalid. Link mode set to On Data Change of Input Tag.	42
Error importing CSV tag <tag name>. Trigger type <trigger type> is invalid. Trigger type set to Always.	42
Error importing CSV tag <tag name>. Update by <update rate> is invalid. Update by set to <update rate>.	43
Error importing CSV tag <tag name>. Link rate <value> <units> is out of range. Link rate has been set to <value> <units>.	43
Error importing CSV tag <tag name>. Update rate <value><units> is out of range. Update rate has been set to <value><units>.	43
Error importing CSV tag data. No advanced tag records found in CSV file.	44
Derived Expression Messages	44
", expected.	44
( expected.	45
) expected.	45
Expression modified.	45
Numeric expression expected.	46
Please enter an expression.	46
String tag expected.	46
Syntax error: <syntax string>.	46
Unknown tag or misspelled keyword: <tag name>.	47
Unrepresentable numeric constant: <tag name>.	47

Unterminated string. ....	47
<b>Index</b> .....	<b>48</b>

## Help Contents

---

Help version 1.085

### CONTENTS

#### [Overview](#)

What are Advanced Tags?

#### [Advanced Tag Groups](#)

How are Advanced Tag Groups used?

#### [Advanced Tag Types](#)

What are the different kinds of Advanced Tags?

#### [Optimizing Performance](#)

What performance can I expect?

#### [Error Descriptions](#)

What error messages can Advanced Tags produce?

### Overview

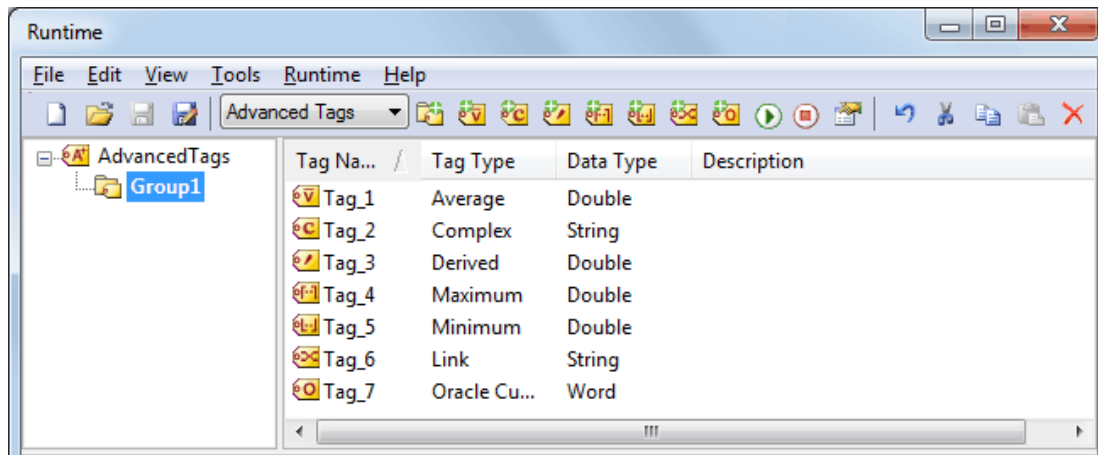
---

Advanced Tags are used to perform basic analytics such as math, logic, and evaluation functions on other tags. There are currently seven types of Advanced Tags: Average, Complex, Derived, Link, Minimum, Maximum and Oracle Cumulative.

• **See Also:** [Advanced Tag Groups](#), [Advanced Tag Types](#), [Optimizing Performance](#)

## Plug-In Interface

The Advanced Tags Plug-In interface consists of a Project View and Detail View, located on the left and right panes of the user interface respectively. The toolbar is located above both views, and contains all of the options available to the Advanced Tags objects. Users may also access these options by clicking **Edit | Advanced Tags**.



**Note:** Drag and drop can be used to move objects. To copy objects, press and hold the Control key during drag and drop.

### Project View

The Project View displays the Advanced Tags hierarchy, which consists of a root `_AdvancedTags` node and Advanced Tag groups. `_AdvancedTags` is the root node for the Advanced Tags hierarchy, to which Advanced Tags and/or groups can be added. Advanced Tag groups are used for organization, and may contain Advanced Tags and/or other groups.

**Note:** In the image above, the Advanced Tag Group is labeled "Group1."

### Detail View

The Detail View displays the Advanced Tags under the node currently selected in the Project View. Users can create, edit, enable, disable, copy, cut, paste, delete and drag and drop tags to nodes in the Project View.

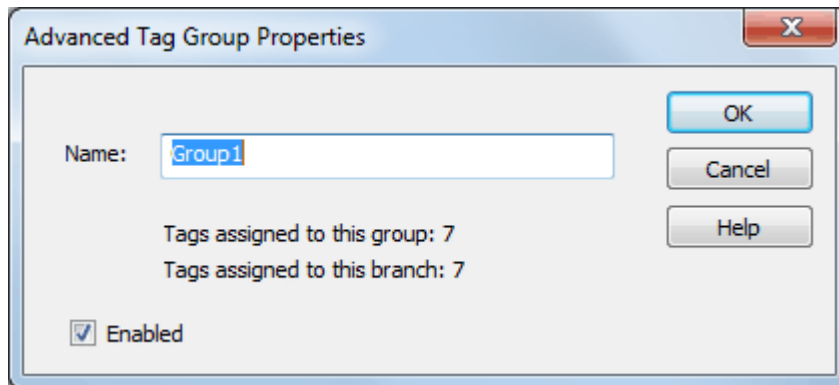
### Toolbar

The Toolbar provides convenient access to all of the Advanced Tag functions (such as adding objects, editing objects, enabling, disabling objects, cutting, copying, pasting and undoing events).

## Advanced Tag Groups

---

Advanced Tag groups are used to organize Advanced Tags and other groups.



**Name:** This parameter specifies the name of the tag group. The name cannot start with an underscore and must be unique among sibling tag groups. It may be up to 512 characters in length.

**Tags assigned to this group:** This informational text reports the number of tags assigned to the current tag group.

**Tags assigned to this branch:** This informational text reports the number of tags assigned to the current tag group and all descendant tag groups.

**Enabled:** This parameter specifies the state of the tag group. If a tag group is disabled, all descendant tags and tag groups are also disabled.

## CSV Import/Export

---

The Advanced Tags Plug-In supports the import and export of tag data in a Comma Separated Variable (CSV) file. When using CSV import and export, tags are created quickly in the desired application. CSV functions are only available when an Advanced Tag Group is selected. Furthermore, parameters that are not defined in the CSV file are assigned appropriate default values.

### ● Notes:

- For information on specifying which character to use as the variable (comma or semicolon), refer to "Options - General" in the server help file.
- CSV files generated with an earlier version of the Advanced Tags Plug-In may contain property names and values that differ from the current version format. Although these files import without problems, it is recommended that editing for CSV import occurs using the latest CSV export format.

To jump to a specific section, select a link from the list below.

[Exporting an Advanced Tag Group List](#)

[Importing a CSV Tag List into the Server](#)

[Using Other Characters as the Delimiter](#)

## Creating a Template

The easiest way to create an import CSV file is to create a template. For more information, refer to the instructions below.

1. To start, create an Advanced Tag Group. Then, define an Advanced Tag of each type to be used in the project.
2. Next, export the tag group as a CSV file.
3. Use this template in a spreadsheet application that supports CSV files, and then modify the file as desired.

● **Note:** Users can save the CSV file to disk, and then re-import it into the server beneath the same tag group or a new tag group.

● **Note:** Microsoft Excel is an excellent tool for editing large groups of tags outside the server. Once a template CSV file has been exported, it can be loaded directly into Excel for editing. A CSV file load in Excel would appear as shown below.

### Example CSV

Exporting an Advanced Tag Group list generates a .CSV text file that contains a section for each Advanced Tag type, in addition to a section for Complex Tag elements. Each section contains a heading record followed by a record for each tag defined under the selected tag group. The heading records contain the following column names: AverageTag, OracleCumulativeTag, ComplexTag, DerivedTag, LinkTag, MaximumTag, MinimumTag, and ComplexTagElement. Column names must be exactly the same as those listed; however, columns may be in any order and all columns (except for "Name," "Tag Name," and "Complex Tag Reference") are optional.

● **Important:** The Advanced Tag type sections may be in any order, with the exception of the Complex Tag Elements section. That section must be placed after the Complex Tags section. A Complex Tag Element must reference the Complex Tag to which it belongs. If the parent Complex Tag is not added during import (due to omission from the CSV file or another error), the Complex Tag Element is not added.

#### **AverageTag Fields**

Column Name	Values
Record Type	"Average Tag"
Name	The tag name (with path relative to the tag group being imported/exported).
Description	The tag description (which may be up to 64 characters).
Enabled	1 to enable, and 0 to disable.
Source	The tag from the server for which an average is calculated.
Data Type	The Average Tag's data type.
Run Tag	The tag to be monitored to determine if it is appropriate to calculate the average value of the Average Tag.

#### **OracleCumulativeTag Fields**

Column Name	Values
Record Type	"Oracle Cumulative Tag"
Name	The tag name (with path relative to the tag group being imported/exported).
Description	The tag description (which may be up to 64 characters).



Column Name	Values
Enabled	1 to enable, and 0 to disable.
Source	The tag from the server for which the cumulative value is calculated.
Data Type	The Oracle Cumulative Tag's data type.
Maximum Value	The maximum value of the tag being used.

#### ComplexTag Fields

Column Name	Values
Record Type	"Complex Tag"
Name	The tag name (with path relative to the tag group being imported/exported).
Description	The tag description (which may be up to 64 characters).
Enabled	1 to enable, and 0 to disable.
Update By	Options include Rate or Trigger.
Rate	The value for the update rate.
Rate Units	Options include milliseconds, seconds, minutes, hours, or days.
Trigger Tag	The tag from the server that triggers the Complex Tag update.
Complete Tag	The tag from the server that is set once a Complex Tag update has been sent to all subscribing clients.

#### DerivedTag Fields

Column Name	Values
Record Type	"Derived Tag"
Name	The tag name (with path relative to the tag group being imported/exported).
Description	The tag description (which may be up to 64 characters).
Enabled	1 to enable, and 0 to disable.
Data Type	The Derived Tag's data type.
Expression	The expression to be executed by the tag.
Run By	Options include Rate or Trigger.
Rate	The value for the update rate.
Rate Units	Options include milliseconds, seconds, minutes, hours, or days.
Trigger Tag	The tag from the server that triggers the expression to be evaluated/run.
Complete Tag	The tag from the server that is set once the expression has been evaluated/run.

#### LinkTag Fields

Column Name	Values
Record Type	"Link Tag"
Name	The tag name (with path relative to the tag group being imported/exported).
Description	The tag description (which may be up to 64 characters).

Column Name	Values
Enabled	1 to enable, and 0 to disable.
Input Tag	The server tag used as the source of the link.
Output Tag	The server tag used as the destination of the link.
Dead Value	The value written to the Output if the Input is of bad quality.
Link Mode	Options include On Data Change of Input Tag, On Data Change of Input Tag (Ignore Initial Update), and On Interval.
Link Rate	The link rate is in milliseconds.
Trigger Tag	The tag value compared to the Value parameter using the Comparison parameter.
Comparison	Options include the following:  Trigger Tag == Value Trigger Tag != Value Trigger Tag > Value Trigger Tag >= Value Trigger Tag < Value Trigger Tag <= Value
Value	The Value compared to the Trigger Tag.
Trigger Link Mode	Options include Always, While Trigger Comparison True, and On Trigger Comparison True.
Trigger Scan Rate	The trigger scan rate in milliseconds.

#### MaximumTag Fields

Column Name	Values
Record Type	"Maximum Tag"
Name	The tag name (with path relative to the tag group being imported/exported).
Description	The tag description (which may be up to 64 characters).
Enabled	1 to enable, and 0 to disable.
Input Tag	The tag from the server for which a maximum value is calculated.
Data Type	The Maximum Tag's data type.
Run Tag	The tag to be monitored to determine if it is appropriate to calculate the maximum value of the Maximum Tag.

#### MinimumTag Fields

Column Name	Values
Record Type	"Minimum Tag"
Name	The tag name (with path relative to the tag group being imported/exported).
Description	The tag description (which may be up to 64 characters).
Enabled	1 to enable, and 0 to disable.
Input Tag	The tag from the server for which a minimum value is calculated.

Column Name	Values
Data Type	The Minimum Tag's data type.
Run Tag	The tag to be monitored to determine if it is appropriate to calculate the minimum value of the Minimum Tag.

**ComplexTagElement Fields**

Column Name	Values
Complex Tag Reference	The Complex Tag to which the element belongs.
Tag Name	The server tag that is inserted into the Complex Tag.
Insert By	Options include Rate or Trigger.
Rate	The value for the update rate.
Rate Units	Options include milliseconds, seconds, minutes, hours, or days.
Trigger Tag	The tag from the server that triggers the element insertion.
Complete Tag	The tag from the server that is set once the element insertion is complete.

See Also: [Advanced Tag Types](#)

**Importing a CSV Tag List into the Server**

Once the tag list has been edited, it can be re-imported into the server by clicking **File | Import CSV**.

**Note:** This option is only available when an Advanced Tag Group is selected.

**Using Other Characters as the Delimiter**

When utilizing a CSV file that does not use a comma or semi-colon delimiter, do one of the following:

1. Save the project in XML. Then, perform mass configuration on the XML file instead of using CSV.
2. Perform a search-and-replace on the delimiter in the CSV file and then replace the delimiter with a comma or semicolon. The delimiter being used by the server (either comma or semi-colon) must be set to the replacement character.

For more information, refer to *Options - General in the server help file*.

Record Type	Name	Description	Enabled	Data Type	Expression	Run By	Rate	Rate Units	Trigger Tag	Completion Tag	Value
Devised Tag	Minute Counter Counter Engine	1 Devised			TAG(Simulator.Device3.Minute Counter.Staging Counter) + 1	Rate	1 second		_AlarmOffTag.Minute Counter Current Min v Old Min	Simulator.Device3.Minute Counter Counter Engine Complete	0
Devised Tag	Minute Counter Current Min v Old Min	1 Devised			NOT(TAG(Simulator.Device3.Minute Counter Current Min) = TAG(Simulator.Device3.Minute Counter Old Min Count))	Rate	30 milliseconds				0
Link Tag											
Record Type <th>Name</th> <th>Description</th> <th>Enabled</th> <th>Input Tag</th> <th>Output Tag</th> <th>Dead Value</th> <th>Trigger Mode</th> <th>Update Rate</th> <th>Trigger Tag</th> <th>Completion</th> <th>Value</th>	Name	Description	Enabled	Input Tag	Output Tag	Dead Value	Trigger Mode	Update Rate	Trigger Tag	Completion	Value
Link Tag	Minute Counter Counter Complete Reset	1 Simulator.Device3.Minute Counter.Static Zero			Simulator.Device3.Minute Counter Counter Engine Complete	On Value	3000	_AlarmOffTag.Minute Counter Current Min v Old Min		Tag in Value	0
Link Tag	Minute Counter Counter Final Output Engine	1 Simulator.Device3.Minute Counter.Staging Counter			Simulator.Device3.Minute Counter.Final Count Minutes	On Value	3000	Simulator.Device3.Minute Counter in Cycle Sim		Tag in Value	0
Link Tag	Minute Counter Counter Min Report	1 Simulator.Device3.Minute Counter.Static Zero			Simulator.Device3.Minute Counter Current Min	On Value	30	Simulator.Device3.Minute Counter in Cycle Sim		Tag in Value	0
Link Tag	Minute Counter Counter Min Minutes Report	1 Simulator.Device3.Minute Counter.Static Zero			Simulator.Device3.Minute Counter.Final Count Minutes	On Value	300	Simulator.Device3.Minute Counter in Cycle Sim		Tag in Value	0
Link Tag	Minute Counter Move Current Min to Old Min	1 Simulator.Device3.Minute Counter.Current Min			Simulator.Device3.Minute Counter Old Min Count	On Value	300	Simulator.Device3.Minute Counter Counter Engine Complete		Tag in Value	0
Link Tag	Minute Counter Staging Counter Report Engine	1 _AlarmOffTag.Minute Counter Counter Engine			Simulator.Device3.Minute Counter.Staging Counter	On Value	3000	Simulator.Device3.Minute Counter Counter Engine Complete		Tag in Value	0
Link Tag	Minute Counter Staging Counter Reset	1 Simulator.Device3.Minute Counter.Static Zero			Simulator.Device3.Minute Counter.Staging Counter	On Value	300	Simulator.Device3.Minute Counter in Cycle Sim		Tag in Value	0
Link Tag	Minute Counter Start Time	1 _System_Time			Simulator.Device3.Minute Counter.Start Time	On Value	3000	Simulator.Device3.Minute Counter in Cycle Sim		Tag in Value	0
Link Tag	Minute Counter System Min to Current Min	1 _System_Time_Minute			Simulator.Device3.Minute Counter Current Min	On Value	30	Simulator.Device3.Minute Counter in Cycle Sim		Tag in Value	0

## Advanced Tag Types

Select a link from the following list to obtain specific information for the Advanced Tag of interest.

[Average Tags](#)

[Complex Tags](#)

[Derived Tags](#)

[Link Tags](#)

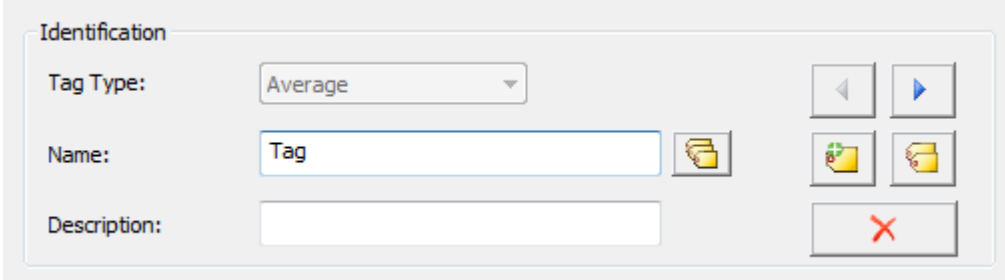
[Maximum Tags](#)

[Minimum Tags](#)

[Oracle Cumulative Tags](#)

### Identification

All Advanced Tags' property dialogs include an Identification section that contains parameters available to all Advanced Tags. Users may create multiple Advanced Tags by utilizing the options displayed in this section.



**Tag Type:** This parameter specifies the tag type. When creating a new tag, users set this value to the desired tag type through the drop-down menu. When editing an existing tag, this parameter displays the tag type of the tag being edited and cannot be changed.

**Name:** This parameter specifies the name of the tag. The name can be up to 256 characters in length and cannot contain periods, double quotes or start with an underscore.

**Show Tag List:** When clicked, this button displays the **Tags** dialog used to select a tag under the currently selected node in the Project View. If the selected node has no tags, this parameter is disabled. *For more information, refer to [Tag List](#).*

● **Note:** To open and close the tag list, press **Alt+L**.

**Description:** This parameter attaches a comment to a tag. The description may be a string of up to 64 characters.

**Previous:** When clicked, this button selects the previous tag in the tag list. It is disabled if a new tag is being created (or if there is no previous tag).

**Next:** When clicked, this button selects the next tag in the tag list. It is disabled if a new tag is being created (or if there is no next tag).

**New:** When clicked, this button creates a new tag. This cancels any edits made to the current tag.

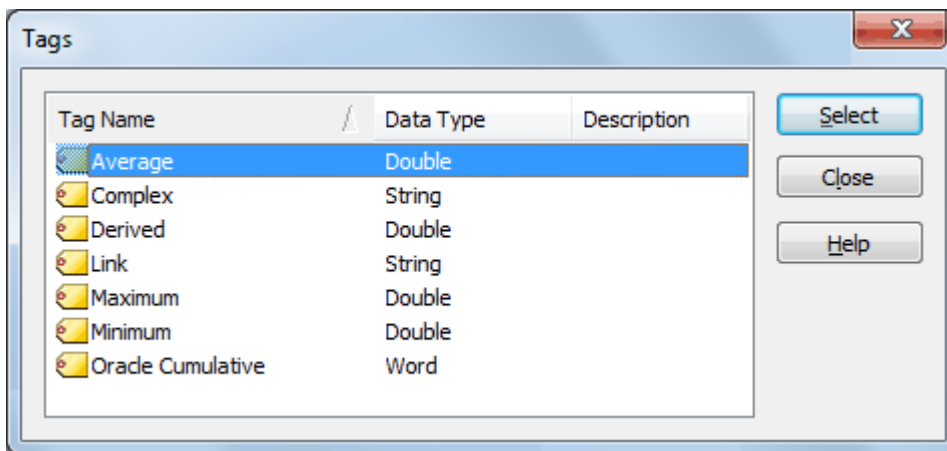
**Duplicate:** When clicked, this button duplicates the current tag. It applies any edits to the current tag and then create a new tag that is a copy of the current tag. The tag name is unique among sibling tags.

**Delete:** When clicked, this button deletes the current tag. Afterward, the dialog moves to the next tag in the list. If no tag follows, the dialog moves to the previous tag in the list. If there are neither following nor preceding tags, the dialog defaults to creating a new tag.

**Enabled:** This parameter specifies the state of the tag. Tags that are enabled have references to other server tags and do computational work. Tags that are disabled have no references to server tags and do no work.

## Tag List

The Tags list displays all the tags under the currently selected tag group and is used to select a tag for editing.



## Average Tags

When enabled, Average Tags calculate an average of a tag's value over time. Averaging is initiated by the value of a Run Tag transitioning from zero to non-zero. The rate that the Average Tag is updated from the server with a new value comes from the update / scan rate assigned to the tag to be averaged. The default scan rate is 100 milliseconds.

● **Note:** Array tags are not supported.

The screenshot shows the 'Average Tag' configuration dialog. It has a title bar with a close button. The 'Identification' section includes a 'Tag Type' dropdown menu set to 'Average', and text input fields for 'Name' and 'Description'. The 'Configuration' section includes a text input field for 'Average:', a 'Data type' dropdown menu set to 'Double', and a text input field for 'Run:'. At the bottom, there is a checked 'Enabled' checkbox and buttons for 'OK', 'Cancel', 'Apply', and 'Help'.

Descriptions of the Configuration parameters are as follows:

- **Average:** This parameter specifies the tag from the server for which an average is calculated.
- **Data Type:** This parameter specifies the data type of the Average Tag.
  - **Note:** Although Double is the only data type available in the Tag Properties, users can request a different data type in the OPC Client. The server takes ownership for coercing the data.
- **Run:** This parameter specifies the tag to be monitored to determine if it is appropriate to calculate the average value of the Average Tag. If the Run Tag's value is zero when the Average Tag is first requested by a client application, the Average Tag has no value. Whenever the Run Tag's value transitions from zero to a non-zero value, the Average Tag begins calculating a new average. The frequency of the calculation is based on the scan rate of the Average Tag, so intermediate average values are reported to client applications. When the Run Tag's value transitions back to zero, the last average value is maintained and reported to the client applications.

### Example

A tag that measures the temperature at a location (with a scan rate of 60000 milliseconds) would update the Average Tag with the following values every minute:

```
72.3 @ 10:00
72.5 @ 10:01
72.9 @ 10:02
73.4 @ 10:03
72.4 @ 10:04
71.6 @ 10:05
71.2 @ 10:06
70.5 @ 10:07
```

If the Trigger Tag successfully transitioned from zero to one, the Average Tag would show the following values:

```
72.3 @ 10:00
```

72.4 @ 10:01  
 72.6 @ 10:02  
 72.8 @ 10:03  
 72.7 @ 10:04  
 72.6 @ 10:05  
 72.3 @ 10:06  
 72.1 @ 10:07

● **Note:** If the quality of the Run Tag or the tag being averaged is bad, the quality of the Average Tag is also bad and averaging stops. To restart, both tags must return to good quality.

## Complex Tags

When enabled, Complex Tags group multiple tags of varying data types as a single complex item or structure. When disabled, they do no work and have a string value of `<ComplexUpdate></ComplexUpdate>`. Although they are primarily used with Oracle MOC connections, any client can read the tags. The tags return data as an XML string defined by the schema below.

● **Note:** Array tags are not supported.

```
<?xml version="1.0" encoding="utf-8"?>
  <xs:schema attributeFormDefault="unqualified"
    elementFormDefault="qualified"
    xmlns:xs="http://www.w3.org/2001/XMLSchema">
    <xs:element name="ComplexUpdate">
      <xs:complexType>
        <xs:sequence>
          <xs:element name="Item">
            <xs:complexType>
              <xs:sequence>
                <xs:element name="Name" type="xs:string" />
                <xs:element name="Value">
                  <xs:complexType>
                    <xs:simpleContent>
                      <xs:extension base="xs:string">
                        <xs:attribute name="DataType" type="xs:unsignedByte" use="required" />
                      </xs:extension>
                    </xs:simpleContent>
                  </xs:complexType>
                </xs:element>
                <xs:element name="Quality" type="xs:int" />
                <xs:element name="TimeStamp" type="xs:string" />
              </xs:sequence>
            </xs:complexType>
          </xs:element>
        </xs:sequence>
      </xs:complexType>
    </xs:element>
  </xs:schema>
```

```
</xs:schema>
```

● **Note:** The updates grouped in a complex update are not atomic, but are aggregated over a time interval. As a result, clients cannot assume that all updates in a complex update occurred at the same time. To get the time of the update, use the item's timestamp element. The timestamp format of tag elements within a Complex Tag is Windows FILETIME. For more information, see this [Microsoft article](#).

**Complex Tag**

**Identification**

Tag Type:

Name:

Description:

**Configuration**

**Elements:**

Tag	Inserted By

Send complex tag updates by:

**Rate:**

**Trigger:**

**Complete:**

Enabled

OK Cancel Apply Help

**Elements:** This parameter lists tags that are part of the Complex Tag.

● **Note:** Array tags cannot be added to the Element List.

**Add Element:** When clicked, this button launches the Complex Element Property, which is then used to select tags for the Element list.



**Modify Element:** When clicked, this button launches the Complex Element Property, which is then used to Modify elements that are highlighted in the Element list.

**Delete Element:** When clicked, this button deletes elements that are highlighted in the Element list.

**Send complex tag updates by:** This parameter specifies whether complex tag updates are sent by Rate or Trigger. The default setting is Rate. Descriptions are as follows:

- **Rate:** When selected, this parameter dictates the rate at which the Complex Tag updates are published. The default setting is 1 second.
  - **Note:** The range depends on the unit. The range for milliseconds is 10 to 999,999,999. The range for seconds is 1 to 4294967. The range for minutes is 1 to 71582. The range for hours is 1 to 1193. The range for days is 1 to 49. The default unit is seconds.
- **Trigger:** When selected, this parameter dictates the condition at which Complex Tag updates are published. There are two types: **Trigger** and **Complete**. The Trigger Tag's value is monitored for a zero to non-zero transition. When this transition occurs, it results in a Complex Tag update. No additional updates occur until the tag's value is reset to zero and another zero to non-zero transition occurs. When a Complete Tag is provided, the server writes a value of 1 to the Complete Tag (to notify that the update has been completed) once a Complex Tag update has been sent to all subscribing clients. Users can tie this to logic in a controller or other subsystem to indicate that the next complex value is ready to be formulated.
  - **Note:** Array tags cannot be used as Trigger or Complete tags. Complete tags must have writeable access.

## Complex Element

The Complex Element dialog is used to browse for an element and then insert it into complex tag. The element data may be inserted by Rate or Trigger. For descriptions of these options, refer to the parameter descriptions above.

## Derived Tags

Derived Tags are used to provide math and/or logic operations on the value or quality of one or more tags. These functions can be combined to perform complex math routines and evaluations. When enabled, the expression is evaluated. When disabled, the expression is not evaluated and the OPC DA quality of the tag is "Bad - Out of Service."

**Notes:**

1. The execution of the string follows standard arithmetic rules.
  - For more information, refer to [Expression Strings](#).
2. Array tags are not supported.

The screenshot shows the 'Derived Tag' configuration dialog box. It has a title bar with a close button. The dialog is divided into two main sections: 'Identification' and 'Configuration'.  
In the 'Identification' section, there is a 'Tag Type' dropdown menu set to 'Derived'. Below it are text input fields for 'Name' and 'Description'. To the right of these fields are several icons: a left arrow, a right arrow, a folder icon, a document icon, and a close button (X).  
The 'Configuration' section contains a 'Data type' dropdown menu set to 'Double'. Below it is a large text area for the 'Expression'. To the right of the text area are two icons: a three-dot menu icon and a checkmark icon. Below the expression text area are three radio button options under the heading 'Run expression by:'. The first option is 'Rate', which is selected, with a text input field containing '1' and a dropdown menu set to 'seconds'. The second option is 'Trigger' with an empty text input field and a three-dot menu icon. The third option is 'Complete' with an empty text input field and a three-dot menu icon.  
At the bottom of the dialog, there is a checkbox labeled 'Enabled' which is checked. To the right of the checkbox are four buttons: 'OK', 'Cancel', 'Apply', and 'Help'.

Descriptions of the Configuration parameters are as follows:

- **Data Type:** This parameter specifies the data type of the result of the expression execution.
  - **Note:** If a Derived Tag has a data type of String, the maximum length of the tag's String value is 4096. This limit includes characters in an expression (such as "abc"). Any characters that exceed this limit are truncated.
- **Expression:** This parameter specifies the expression to be executed by the tag.
- **Tag Browser:** When clicked, this button launches the Tag Browser (from which users may locate tags).
- **Check Expressions:** When clicked, this button checks the validity of the selected expression.

- **Run expression by:** This parameter specifies whether the expression is run by Rate or Trigger. The default setting is Rate. Descriptions are as follows:
  - **Rate:** When selected, this parameter dictates the rate at which the expression is evaluated/run. The default setting is 1 second.
    - **Note:** The range depends on the unit. The range for milliseconds is 10 to 999,999,999. The range for seconds is 1 to 4294967. The range for minutes is 1 to 71582. The range for hours is 1 to 1193. The range for days is 1 to 49. The default unit is seconds.
  - **Trigger:** When selected, this parameter dictates the condition at which the expression is evaluated/run. There are two types: **Trigger** and **Complete**. The tag defined in the Trigger field is monitored for a zero to non-zero transition. When this transition occurs, the expression is evaluated/run. No additional updates occur until the tag's value is reset to zero and another zero to non-zero transition occurs. When a Complete Tag is provided, the server writes a value of VARIANT TRUE to the tag defined in the Complete field when the expression is evaluated/run. Users can tie this to logic in a controller or other subsystem to indicate that the evaluation of the expression is complete.
    - **Note:** If the tag has a Boolean data type, it indicates TRUE. For other data types, the VARIANT\_TRUE value is converted, resulting in -1 for signed data types or "max. value for type" for unsigned data types.

## Expression Strings

Expression strings are used to specify the math formula that is being defined. Expressions are validated for correct syntax and valid format. Array tags cannot be used in an expression.

• **Note:** When referencing the value of a tag in the Expression string, the fully qualified item name is preceded by the keyword TAG and enclosed in parentheses. When referencing the quality of a tag in the Expression string, the fully qualified item name is preceded by the keyword QUALITY and enclosed in parentheses.

### Example 1:

```
TAG(Channel1.Device1.Tag1)
```

### Example 2:

```
QUALITY(Channel1.Device1.Tag1)
```

• **Note:** Comments are also supported in Expression strings. Anything after a pound sign (#) is ignored.

### Example 3:

```
TAG(x) + TAG(y) # Add tag x and tag y
```

### Example 4:

```
QUALITY(x) AND QUALITY(y) # Examine the quality of tag x and tag y
```

• **Note:** For more information specific to Derived Tags, refer to [Arithmetic Operators, Functions](#), and [Logic](#).

## Link Tags

Link Tags are used to link two server tags. For example, this allows Tag A from Device A to be linked to Tag B from Device B without requiring a third-party client connection. When enabled, a Link Tag writes the value of an Input Tag to an Output Tag, effectively linking the two tags. The Link tag has the string value of `<input tag> != <output tag>` until the first link occurs, then the string becomes `<input tag> == <output tag>`. When disabled, a Link Tag does no linking and the OPC DA quality of the tag is "Bad - Out of Service."

See Also: [Array Tags](#)

**Link Tag**

**Identification**

Tag Type:

Name:

Description:

**Configuration**

Input:

Output:

Dead Value:

Trigger Type:

Trigger Tag:

Trigger Scan Rate:  milliseconds

Comparison:

Value:

Link Mode:

Link Rate:  milliseconds

Enabled

OK Cancel Apply Help

Descriptions of the Configuration parameters are as follows:

- **Input:** This parameter specifies the Input Tag, which must be a valid server tag. It is used as the source of the link, and its value is written to the Output Tag.
  - **Note:** The Input and Output fields cannot be the same.
- **Output:** This parameter specifies the Output Tag, which must be a valid server tag. It is used as the destination of the link and is written to using the value of the Input Tag. The Output Tag must be writable.
  - **Note:** The Input and Output fields cannot be the same.
- **Dead Value:** This parameter specifies the value written to the Output if the Input is of bad quality. This value's data type is the data type of the Output. Users must choose dead values that are within the range of the Output tag's data type to ensure that no data is lost. If the field is left empty, the dead value is disabled. If disabled, the Output's value and quality does not change when the Input is

bad quality.

● **Note:** If the Output is an array tag, each array element is set equal to the Dead Value.

- **Trigger Type:** This parameter specifies when the configured link is active. The options are: Always, While Trigger Comparison True, and On Trigger Comparison True. The default selection is Always. Descriptions of the options are as follows:
  - **Always:** The configured link is active as long as the server is running and the Link Tag is enabled.
  - **While Trigger Comparison True:** The configured link is active when the server is running, the Link Tag is enabled, and the configured trigger comparison evaluates to true. While the logic defined for the trigger in the Comparison and Value fields is satisfied, linking occurs based on the configured Link Mode (i.e. On Data Change of Input Tag or On Interval). When the trigger comparison evaluates to false, no linking occurs.
  - **On Trigger Comparison True:** If the server is running and the Link Tag is enabled, then the input is linked to the output when the logic defined for the trigger in the Comparison and Value fields is satisfied. At that moment, the Input Tag is read and the Output Tag is updated. No link occurs until a change in the trigger value occurs and satisfies the configured trigger logic.
- **Trigger Tag:** This parameter specifies a tag whose value is compared to the Value parameter using the Comparison parameter (such as Trigger Tag == Value). This parameter is only available to configure when the Trigger Type is While Trigger Comparison True or On Trigger Comparison True.
  - **Notes:** The specified tag must be a valid server tag and cannot be an array tag. The Trigger and Output Tags cannot be the same.

Description of the trigger behavior for each of the Trigger Type is as follows:

- **While Trigger Comparison True:** While the Trigger Tag value satisfies the Comparison and Value configuration, the input is linked to the output based on the Link Mode configuration. No link occurs when the trigger comparison is not met.
- **On Trigger Comparison True:** The Trigger Tag is scanned at the configured Trigger Scan Rate. Each time a change in the Trigger Tag value that satisfies the Comparison and Value configuration is detected, a read of the Input Tag occurs and the Output Tag is updated. No link occurs until a change in the trigger value occurs and satisfies the configured trigger logic.
- **Trigger Scan Rate:** This parameter specifies the scan rate of the Trigger Tag. The valid range is 50 – 1800000000 milliseconds. The default setting is 1000.
- **Comparison:** This parameter specifies the logical comparison between the Trigger Tag value and the Value parameter. Descriptions of the options are as follows:
  - **Trigger Tag > Value:** The trigger tag value is greater than the value.
  - **Trigger Tag >= Value:** The trigger tag value is greater than or equal to the value.
  - **Trigger Tag < Value:** The trigger tag value is less than the value.
  - **Trigger Tag <= Value:** The trigger tag value is less than or equal to the value.
  - **Trigger Tag == Value:** The trigger tag value is equal to the value.
  - **Trigger Tag != Value:** The trigger tag value is not equal to the value.
- **Value:** This parameter specifies the Value to compare to the value of the Trigger Tag. The data type of this value is equal to the data type of the Trigger Tag.
- **Link Mode:** This parameter specifies the required conditions to initiate the link. The default selection is On Data Change of Input Tag. Descriptions of the options are as follows:

- **On Data Change of Input Tag:** The input is linked to the output any time the input is good quality and its value changes.
  - **Tip:** When the link mode is **On Trigger Comparison True**, a true trigger tag input change also causes a link.
- **On Data Change of Input Tag (Ignore Initial Update):** The input is linked to the output any-time that the input value changes, except for the initial update (which is ignored and does not count as an input value change). The Link Tag has the string value `<input tag> != <output tag>` until after the first update successfully completes. At that time, subsequent updates have the string value `<input tag> == <output tag>`.
  - **Note:** An initial update of bad quality is not considered an initial update.
- **On Interval:** The input is linked to the output every Link Rate (milliseconds).
- **Link Rate (ms):** The frequency of update as defined in this parameter depends on the chosen Link Mode. The valid range is 50 – 1800000000 milliseconds. The default setting is 1000. Description of the Link Rate for each of the Link Mode options is as follows:
  - **On Data Change of Input Tag:** The configured Link Rate defines the scan rate of the Input Tag. This is the fastest rate at which a change in the Input value may be detected.
  - **On Interval:** The Link Rate defines the rate at which to update the output. Each time the interval elapses, the Input Tag is read and the Output Tag is updated.
    - **Note:** A link for the On Interval Link Mode requires a read of the Input Tag and a write to the Output Tag. These operations are given priority. If the linking is occurring at a fast rate (such as 50 milliseconds) it is possible that other clients operating in exception-based mode could miss data updates. Make sure that linking is occurring no faster than is required.

● **See Also:** [Link Examples](#)

## Array Tags

Link Tags can be used to link array tags, provided the following:

- The arrays are the same size.
- The arrays are the same data type. Otherwise, the values must be moved from one type to another.

It is best to use arrays with the same dimensions. For more information, refer to the table of examples below.

Input Array Tag/Type	Output Array Tag/Type	Succeeds w/o Error
K001[6]	K0100[6]	Yes
K001[6]	K0100[2][3]	Yes
K001[2][3]	K0100[6]	Yes
K001[6]	K0100[2][2]	No
K001[6] / Word	K0100[6] / DWord	Yes
K001[6] / Float	K0100[6] / DWord	No

● **Note:** The examples above use address syntax from the Simulator Driver and do not include the channel and device names.

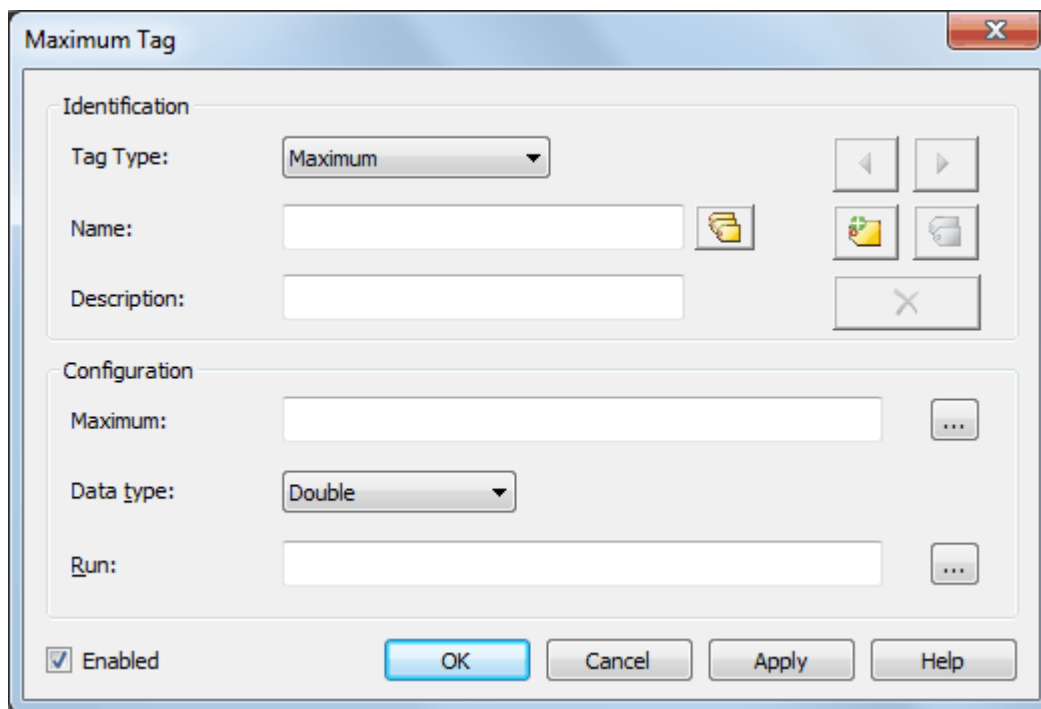
## Link Behavior Matrix

Trigger Type	Link Mode	Link Rate Behavior	Link Behavior
Always	On Data Change of Input Tag	Scan Rate of the Input Tag	Each detected change in the value of the input tag is written to the output tag.
Always	On Data Change of Input Tag (Ignore Initial Update)	Scan Rate of the Input Tag	After the input tag value has changed at least once, each detected change in the value of the input tag is written to the output tag.
Always	On Interval	Interval to Update the Output Tag	Each time the link rate elapses, a read of the input tag occurs. When that read completes, the value of the input tag is written to the output tag.
While Trigger Comparison True	On Data Change of Input Tag	Scan Rate of the Input Tag	If the configured trigger comparison evaluates to true, each detected change in the value of the input tag is written to the output tag. When the trigger comparison is false, no linking occurs.
While Trigger Comparison True	On Data Change of Input Tag (Ignore Initial Update)	Scan Rate of the Input Tag	If the configured trigger comparison evaluates to true and the input tag value has changed at least once; each detected change in the value of the input tag is written to the output tag. When the trigger comparison is false, no linking occurs.
While Trigger Comparison True	On Interval	Interval to Update the Output Tag	When the trigger comparison initially evaluates to true, a read of the input tag occurs. When that read completes, the value of the input tag is written to the output tag. While the trigger comparison is true, each time the link rate elapses, a read of the input tag occurs. When that read completes, the value of the input tag is written to the output tag. When the trigger comparison is false, no linking occurs.
On Trigger Comparison True	N/A	N/A	If the trigger tag value changes and the trigger comparison evaluates to true, a read of the input tag occurs. When that read completes, the value of the input tag is written to the output tag. Only a single write occurs each time the trigger is evaluated as true.

## Maximum Tags

When enabled, Maximum Tags calculate the maximum value of a tag's value. Determining the maximum value is initiated by the value of a Run Tag transitioning from zero to non-zero. The rate that the tag is updated from the server with a new value comes from the update / scan rate on the device tag in the server. The default scan rate is 100 milliseconds. Maximum Tags report OPC DA quality of "Bad - Out of Service" when disabled.

● **Note:** Array tags are not supported.



**Maximum:** This parameter specifies the tag from the server for which a maximum value is calculated.

**Data Type:** This parameter specifies the data type of the Maximum Tag.

**Note:** Although Double is the only data type available in the Tag Properties, users can request a different data type in the OPC Client. The server takes ownership for coercing the data.

**Run:** The Run Tag is monitored to determine if it is appropriate to calculate the maximum value of the Maximum Tag. Whenever the Run Tag's value is non-zero, new maximum values are calculated for the Maximum Tag at the scan rate applied to the source tag. The calculation determines whether or not the currently scanned maximum value is higher than the reported maximum value. If it is, it replaces the reported value with the scanned value. When the Run Tag's value transitions back to zero, the last maximum value is maintained and reported to the client application. Upon return to non-zero, the last maintained maximum value is cleared.

## Examples

A tag that measures the temperature at a location (with a scan rate of 60000 milliseconds) would update the Maximum Tag with the following values every minute:

```
72.3 @ 10:00
72.5 @ 10:01
72.9 @ 10:02
73.4 @ 10:03
72.4 @ 10:04
71.6 @ 10:05
71.2 @ 10:06
70.5 @ 10:07
```

If the Trigger Tag had successfully transitioned from 0 to 1, the Maximum tag would show the following values:



72.3 @ 10:00  
 72.5 @ 10:01  
 72.9 @ 10:02  
 73.4 @ 10:03  
 73.4 @ 10:04  
 73.4 @ 10:05  
 73.4 @ 10:06  
 73.4 @ 10:07

#### Notes:

1. If the quality of the Maximum Tag or the Trigger Tag is bad, the quality of the Maximum Tag is also bad.
2. If the quality of the Minimum Tag or the Trigger Tag is bad, calculation of the minimum value stops. For calculation of the minimum value to restart, both tags must return to good quality and the Trigger Tag must successfully transition from zero to non-zero.

## Minimum Tags

When enabled, Minimum Tags calculate the minimum value of a tag's value. Determining the Minimum value is initiated by the value of a Run tag transitioning from zero to non-zero. The rate that the tag is updated from the server with a new value comes from the update/scan rate on the device tag in the server. The default scan rate is 100 milliseconds. Minimum Tags report OPC DA quality of "Bad - Out of Service" when disabled.

**Note:** Array tags are not supported.

**Minimum:** This parameter specifies the tag from the server for which a minimum value is calculated.

**Data Type:** This parameter specifies the data type of the Minimum Tag.

● **Note:** Although Double is the only data type available in the Tag Properties, users can request a different data type in the OPC Client. The server takes ownership for coercing the data.

**Run:** The Run Tag is monitored to determine if it is appropriate to calculate the maximum value of the Maximum Tag. Whenever the Run Tag's value transitions from a zero to a non-zero value, a new maximum value is calculated for the Maximum Tag. The calculation determines whether or not the currently scanned maximum value is higher than the reported maximum value. If it is, it replaces the reported value with the scanned value. When the Run Tag's value transitions back to zero, the last maximum value is maintained and reported to the client application.

## Examples

A tag that measures the temperature at a location (with a scan rate of 60000 milliseconds) would update the Minimum Tag with the following values every minute:

72.3 @ 10:00  
72.5 @ 10:01  
72.9 @ 10:02  
73.4 @ 10:03  
72.4 @ 10:04  
71.6 @ 10:05  
71.2 @ 10:06  
70.5 @ 10:07

If the Trigger Tag had successfully transitioned from 0 to 1, the Minimum Tag would show the following values:

72.3 @ 10:00  
72.3 @ 10:01  
72.3 @ 10:02  
72.3 @ 10:03  
72.3 @ 10:04  
71.6 @ 10:05  
71.2 @ 10:06  
70.5 @ 10:07

### ● Notes:

1. If the quality of the Minimum Tag or the Trigger Tag is bad, the quality of the Minimum Tag is also bad.
2. If the quality of the Minimum Tag or the Trigger Tag is bad, calculation of the minimum value stops. For calculation of the minimum to restart, both tags must return to good quality and the Trigger Tag must successfully transition from zero to non-zero.

## Oracle Cumulative

Oracle Cumulative Tags are specifically designed for Oracle requirements. When enabled, they return the delta between the last value polled and the current value polled from a specific tag. This tag type reports an OPC DA quality of "Bad - out of service" when disabled.

On the first update, the raw value is sent to the client. Each successive value takes the cumulative value and sends it to the client. Values that cannot be read and that are considered bad quality are skipped and

the next good value used. To account for rollover, enter the maximum raw value that can be read to calculate the cumulative value appropriately.

● **Note:** Array tags are not supported.

Descriptions of the Configuration parameters are as follows:

- **Cumulative:** This parameter specifies the tag from the server for which the cumulative value is calculated.
- **Data Type:** This parameter specifies the data type of the result, which is the value of this tag.
- **Maximum Value:** The Maximum Value should be set to equal the maximum value of the tag being used. For example, if the tag is a counter with a max value of 1000, the Cumulative Tag Maximum Value property should be set to 1000.

## Examples

Assume that in calculating the cumulative value for a counter that ranges from 0-100 (set the maximum value to 100), the following samples were read:

```
5 @ 10:00
45 @ 10:01
95 @ 10:02
4 @ 10:03
```

The server would report the following:

```
5 @ 10:00 (The first Read is the raw value)
40 @ 10:01 (45-5)
50 @ 10:02 (95-45)
9 @ 10:03 (100-95+4)
```

## Arithmetic Operators

Arithmetic Operators perform a math process. The result of that process is returned as the value of the Derived tag.

**Important:** Arithmetic Operators are specific to Derived Tags.

Arithmetic Function	Formula	Result
Add*	$TAG(<Tagname>)+TAG(<Tagname>)$	For Numeric Tags, the result of this operation returns the sum of the tag values in the expression.  For String Tags, the result of this operation concatenates all of the strings together.
Subtract	$TAG(<Tagname>)-TAG(<Tagname>)$	The result of this operation returns the difference of the tag values in the expression.
Multiply	$TAG(<Tagname>)*TAG(<Tagname>)$	The result of this operation returns the product of the tag values in the expression.
Divide	$TAG(<Tagname>)/TAG(<Tagname>)$	The result of this operation returns the divisor of the tag values in the expression.
Modulo	$TAG(<Tagname>)%TAG(<Tagname>)$	The result of this operation returns the remainder after division.

\*At this time, Numeric and String Tag data types cannot be mixed in the same operation.

## Examples

Arithmetic Function	Formula	Result
Add Tag	$TAG(Sim.Device.Add1)+TAG(Sim.Device.Add2)$	If Add1=6 and Add2=71, the result is 77.
Add Quality	$QUALITY(Sim.Device.Add1)+QUALITY(Sim.Device.Add2)$	If both the Add1 and the Add2 tags have good quality, the result is 2. If neither tag has good quality, the result is 0. If only one of the tags has good quality, the result is 1.
Subtract	$TAG(Sim.Device.Subtract1)-TAG(Sim.Device.Subtract2)$	If Subtract1 is 5 and Subtract2 is 10, the result is -5.
Multiply	$TAG(Sim.Device.Multiply1)*TAG(Sim.Device.Multiply2)$	If Multiply1=3 and Multiply2=4, the result is 12.
Divide	$TAG(Sim.Device.Divide1)/TAG(Sim.Device.Divide2)$	If Divide1=5 and Divide2=2, the result is 2.5.
Modulo	$TAG(Sim.Device.Mod1)%TAG(Sim.Device.Mod2)$	If Mod1=5 and Mod2=2, the result is 1.

## Additional Arithmetic Expression Examples

### Complex Math Polynomial

$(TAG(Sim.Device.Polynomial-Coefficient1)*TAG(Sim.Device.Polynomial-X)*TAG(Sim.Device.Polynomial-X))$

+

$(TAG(Sim.Device.Polynomial-Coefficient2)*TAG(Sim.Device.Polynomial-X))$

-

$TAG(Sim.Device.Polynomial-Coefficient3)$

For this example, assume the following:

Polynomial - Coefficient1 = 6

Polynomial - Coefficient2 = 10

Polynomial - Coefficient3 = 4

Polynomial - CoefficientX = 2

Plugging those values into the equation yields a result of 40.

$$(6*(2*2)) + (10*2) - 4 = 40$$

## Functions

Functions are used to perform a specific calculation on a tag values or expressions. The result of that process is returned as the value of the Derived tag.

**Important:** All Functions are specific to Derived Tags.

Function	Formula	Result
Absolute Value	$ABS(TAG(<Tagname>))$	This function returns the absolute value of the tag value or expression within the parenthesis.
Arc Cosine	$ACOS(TAG(<Tagname>))$	This function is the inverse of the Cosine function and returns the result as a number with a value range of 0 to 180.  Input value range is -1.0 to +1.0.
Arc Sine	$ASIN(TAG(<Tagname>))$	This function is the inverse of the Sine function and returns the result as a number with a value range of -90.0 to 90.0.  Input value range is -1.0 to 1.0.
Arc Tangent	$ATAN(TAG(<Tagname>))$	This function is the inverse Tangent function and returns the result as a number with the range of -90.0 to 90.0.  There is no input range limit.
Cosine	$COS(TAG(<Tagname>))$	This function calculates the Cosine of the tag value. The result is a number with the range of -1.0 to 1.0.  Although there is no true input limit, the Sine input

Function	Formula	Result
		is an angle. The assumed range is 0.0 to 360.0 or -180.0 to 180.0.
Power	$POW(TAG(<Tagname>), TAG(<Tagname>))$  $POW(Base, Exponent)$	This function calculates the result as the base raised to the exponent.
Sine	$SIN(TAG(<Tagname>))$	This function calculates the Sine of tag value. The result is a number with the range of -1.0 to 1.0.  Although there is no true input limit, the Sine input is an angle. The assumed range is 0.0 to 360.0 or -180.0 to 180.0.
Square Root	$SQRT(TAG(<Tagname>))$	This function returns the Square Root of the tag value as the result.
Tangent	$TAN(TAG(<Tagname>))$	This function calculates the Tangent of the tag value and outputs a number ranging from negative to positive infinity.  The input range is any derivative of -90.0 to 90.0.

### Examples

Function	Formula	Result
Absolute Value	$ABS(TAG(Sim.Device.Abs1))$  $ABS(TAG(Sim.Device.Subtract1) - TAG(Sim.Device.Subtract2))$	If Abs1=-57, the result is 57.  If Subtract1 is 5 and Subtract2 is 10, the result of the math is -5 and the result of the Absolute value function is 5.
Arc Cosine	$ACOS(TAG(Sim.Device.ACos1))$	If ACos1=-0.5, the result is 120.
Arc Sine	$ASIN(TAG(Sim.Device.ASin1))$	If ASin1=.707107, the result is 45.  If it is -.707107, the result is -45.
Arc Tangent	$ATAN(TAG(Sim.Device.ATan1))$	If ATan1=-1.5, the result is -56.3099.
Cosine	$COS(TAG(Sim.Device.Cos1))$	If Cos1=180, the result is -1.
Power	$POW(TAG(Sim.Device.Pow1), TAG(Sim.Device.Pow2))$	If Pow1 is 9 and POW2 is 3, the result is 729.
Sine	$SIN(TAG(Sim.Device.Sin1))$	If Sin1=270 the result is -1.0, if it is 90 the result is 1.0.
Square Root	$SQRT(TAG(Sim.Device.Sqrt1))$	If Sqrt1=225, the result is 15.
Tangent	$TAN(TAG(Sim.Device.Tan1))$	If Tan1 is 22.5, the result is 0.414214.

## Logic Tags

Logic tags are used to evaluate an expression to be either True or False and return that result as the value of the tag. All Logic Derived tags are Boolean data type. A Boolean True can be a 1 or -1 depending on the client application; a Boolean False is 0.

**Important:** All Logic Tags are specific to Derived Tags.

Logic Function	Formula	Result
And	$TAG(<Tagname>)AND TAG(<Tagname>)$	This function returns True if each of the expressions evaluate to True. If any expression returns False, the function returns False.
Equal To	$TAG(<Tagname>)==TAG(<Tagname>)$	This function compares the results of each expression and returns True if they are the same, False if they are not the same.
Greater Than	$TAG(<Tagname>)>TAG(<Tagname>)$	This function compares the results of each expression and returns True if the first is greater than the other; otherwise it returns False.
Less Than	$TAG(<Tagname>)<TAG(<Tagname>)$	This function compares the results of each expression and returns True if the first is less than the other; otherwise it returns False.
Not	$NOT(TAG(<Tagname>))$	This function returns True if the expression evaluates to 0 and False if the expression result is greater than 0.
Or	$TAG(<Tagname>)OR TAG(<Tagname>)$	This function returns True if any of the expressions evaluate to greater than 0. If all expressions evaluate to 0, the function returns False.

## Examples

Logic Function	Formula	Result
And Values	$TAG(Sim.Device.And1)AND TAG(Sim.Device.And2)$	If And1=0 and And2=97, the result is False. If And1=1 and And2=1, the result is True.
And Qualities	$QUALITY(Sim.Device.And1)AND QUALITY(Sim.Device.And2)$	If both the And1 and the And2 tags have good quality, the result is True. If either of the And1 or the And2 tags do not have good quality, the result is False.
Equal To	$TAG(Sim.Device.EqualTo1)==TAG(Sim.Device.EqualTo2)$	If EqualTo1=Test and EqualTo2=Test, the result is True.
Greater Than	$TAG(Sim.Device.GreaterThan1)>TAG(Sim.Device.GreaterThan2)$	If GreaterThan1=16 and GreaterThan2=17, the result is False.
Less Than	$TAG(Sim.Device.LessThan1)<TAG(Sim.Device.LessThan2)$	If LessThan1=20 and LessThan2=41 the result is True.
Not	$NOT(TAG(Sim.Device.EqualTo1)-)==TAG(Sim.Device.EqualTo2))$	If EqualTo1=Test and EqualTo2=Test, the result is False.
Or	$TAG(Sim.Device.Or1)OR TAG(Sim.Device.Or2)$	If Or1=0 and Or2=1 the result is True. If Or1=0 and Or2=0 the result is False.

### Additional Logic Expression Examples

Logic Function	Formula	Result
Greater Than or Equal To	<i>TAG(Sim.Device.GreaterThanOrLessThan1)&gt;=TAG(Sim.Device.GreaterThanOrLessThan2)</i>	If GreaterThanOrLessThan1=17 and GreaterThanOrLessThan2=17, the result is True. If GreaterThanOrLessThan1=16, the result is False.
IsTrue	<i>TAG(Sim.Device.IsTrue1)==True</i>	If IsTrue=0 then the result is Result is False.
IsFalse	<i>TAG(Sim.Device.IsFalse1)==FALSE</i>	If IsFalse=1 then the result is False.
Less Than or Equal To	<i>TAG(Sim.Device.LessThanOrGreaterThan1)&lt;=TAG(Sim.Device.LessThanOrGreaterThan2)</i>	If LessThanOrGreaterThan1=0 and LessThanOrGreaterThan2=1000 the result is True.



## Optimizing Performance

The rate of change Advanced Tags can acquire is correlated to the number of advanced tags. As more advanced tags are added, the rate slows.

Below are some very general statistics on the performance using the most basic Link Tag type. This data on its performance is specific to the computing environment where the specific OPC server resided during testing. Performance varies depending on the computing environment and the type and number of advanced tags being processed.

### Other Considerations

- The Advanced Tags implements one thread per type; multiple threads per type is not possible.
- Using multiple cores for the server is not likely to help with performance (though it may free up processing time by supporting other applications).
- Tags are processed every 100 milliseconds.
- Groups are processed sequentially, so grouping should be avoided to achieve the best performance.
- In the test scenario in the table below, when using the Link Tags type with Link Rate (milliseconds) at least five times the number of tags, updates are provided in real time.

### Link Tag Testing (10-Minute Time Frame)

Number of Tags	Link Rate (ms)	Expected Updates <sup>(2)</sup>	Actual Updates
1000	5000	120	119
<b>1000</b>	<b>2500</b>	<b>240</b>	<b>233</b>
<b>1000</b>	<b>1000</b>	<b>600</b>	<b>534</b>
500	2500	240	238
200	1000	600	597
100	500	1200	1200
<b>100</b>	<b>400</b>	<b>1500</b>	<b>1478</b>
<b>100</b>	<b>300</b>	<b>2000</b>	<b>1918</b>

#### Notes:

1. Values in **bold** are the test scenarios well below the number of expected updates.
2. Expected updates: the number of updates that occur if the Link Rate is honored with 100% accuracy.
3. At the same Link Rate setting of 1,000 milliseconds, the number of updates is less than expected for 1,000 Link Tags; whereas with 200 Link Tags, the number of updates occur as expected.

## Error Message Descriptions

---

The following error/warning messages may be generated. Click on the link for a description of the message.

[Advanced Tag Messages](#)

[CSV Messages](#)

[Derived Expression Messages](#)

## Advanced Tag Messages

---

The following messages may be generated. Click on the link for a description of the message.

[<Advanced tag name> is invalid. Verify the tag references valid server tags and does not contain any references to itself or to an unsupported or array data type.](#)

[<Tag name> has an invalid expression: <expression error>.](#)

[Failed to write to tag <tag name> from link tag <link tag name>.](#)

[References to array tags with an unsupported or array data type are not allowed <tag name>.](#)

[The complex tag already references <tag name> and will not be re-added.](#)

[The input and output tags cannot be the same.](#)

[The tag must be writeable.](#)

[The trigger and output tags cannot be the same.](#)

[Unable to start complete tag <tag name> for element <element> on tag <advanced tag name>.](#)

[Unable to start complete tag <tag name> on tag <advanced tag name>.](#)

[Unable to start element tag <tag name> on tag <advanced tag name>.](#)

[Unable to start required tag reference <reference> on tag <tag name>.](#)

[Unable to start required tag reference <reference> in expression <expression>.](#)

[Unable to start trigger tag <tag name> for element <element> on tag <advanced tag name>.](#)

[Unable to start trigger tag <tag name> on tag <advanced tag name>.](#)

**<Advanced tag name> is invalid. Verify the tag references valid server tags and does not contain any references to itself or to an unsupported or array data type.**

---

### Error Type:

Error

### Possible Cause:

The tag does not exist in the project, is already referenced, or is an unsupported data type.

### Solutions:

1. Add the tag to the project.
2. Reference the correct tag.
3. Choose a tag with a supported data type.

**<Tag name> has an invalid expression: <expression error>.**

---

**Error Type:**

Warning

**Possible Cause:**

The expression may contain an unknown tag, misspelled keyword, or syntax error.

**Solution:**

1. Verify any tags in the expression exist and are valid. Correct as necessary.
2. Check the expression for misspelled keywords and syntax errors. Correct as necessary.

**Failed to write to tag <tag name> from link tag <link tag name>.**

---

**Error Type:**

Warning

**Possible Cause:**

1. The write tag does not have a data type (set to Default) or no conversion between data types is valid.
2. The write tag is not accessible because of limited privileges or user permissions.
3. The tag is not writable.
4. Server is not in a licensed state.

**Solution:**

1. The write tag should have proper data type.
2. Fix user specific privileges for the write tag.
3. Change the write tag to be writable.
4. License the server and / or drivers.

**References to array tags with an unsupported or array data type are not allowed <tag name>.**

---

**Error Type:**

Warning

**Possible Cause:**

An attempt was made to reference a tag with an unsupported or array data type from an advanced tag.

**Solution:**

Choose a tag that is not an array and has a supported data type for the advanced tag type.

---

**The complex tag already references <tag name> and will not be re-added.**

---

**Error Type:**

Warning

**Possible Cause:**

An attempt was made to add a tag to the Complex Tag Element List where it was already referenced.

**Solution:**

Choose a tag to reference that is not already being referenced.

---

**The input and output tags cannot be the same.**

---

**Error Type:**

Warning

**Possible Cause:**

The input and output tags for a link tag are the same.

**Solution:**

Do not use the same tag as both the input and output tag. This creates an invalid circular link.

---

**The tag must be writeable.**

---

**Error Type:**

Warning

**Possible Cause:**

1. The output tag for a link tag is not writeable.
2. The complete tag for a derived or complex tag is not writeable.

**Solution:**

Make sure that the tag is writeable. Links require writing to the output tag; derived and complex tags require writing to the complete tag.

---

**The trigger and output tags cannot be the same.**

---

**Error Type:**

Warning

**Possible Cause:**

The trigger and output tags for a link tag are the same.

**Solution:**

Do not use the same tag as both the trigger and output tag. This can create an invalid self-triggering link tag.

---

**Unable to start complete tag <tag name> for element <element> on tag <advanced tag name>.**

---

**Error Type:**

Warning

**Possible Cause:**

The tag may reference another tag that may have been deleted or renamed.

**Solution:**

1. Add the tag back into the project.
2. Reference the correct tag.
3. Correct the tag name.

---

**Unable to start complete tag <tag name> on tag <advanced tag name>.**

---

**Error Type:**

Warning

**Possible Cause:**

The tag may reference another tag that may have been deleted or renamed.

**Solution:**

1. Add the tag back into the project.
2. Reference the correct tag.
3. Correct the tag name.

---

**Unable to start element tag <tag name> on tag <advanced tag name>.**

---

**Error Type:**

Warning

**Possible Cause:**

The tag may reference another tag that may have been deleted or renamed.

**Solution:**

1. Add the tag back into the project.
2. Reference the correct tag.
3. Correct the tag name.

---

**Unable to start required tag reference <reference> on tag <tag name>.**

---

**Error Type:**

Warning

**Possible Cause:**

The tag may reference another tag that may have been deleted or renamed.

**Solution:**

1. Add the tag back into the project.
2. Reference the correct tag.
3. Correct the tag name.

**Unable to start required tag reference <reference> in expression <expression>.**

---

**Error Type:**

Warning

**Possible Cause:**

The tag reference in the expression may not exist, has an invalid address, or has an unsupported data type.

**Solution:**

Verify the tag reference in the expression exists, has a valid address, and has a supported data type. Correct as necessary.

**Unable to start trigger tag <tag name> for element <element> on tag <advanced tag name>.**

---

**Error Type:**

Warning

**Possible Cause:**

The tag may reference another tag that may have been deleted or renamed.

**Solution:**

1. Add the tag back into the project.
2. Reference the correct tag.
3. Correct the tag name.

**Unable to start trigger tag <tag name> on tag <advanced tag name>.**

---

**Error Type:**

Warning

**Possible Cause:**

The tag may reference another tag that may have been deleted or renamed.

**Solution:**

1. Add the tag back into the project.
2. Reference the correct tag.

3. Correct the tag name.

## CSV Messages

---

The following messages may be generated. Click on the link for a description of the message.

[Error importing CSV Complex Element record <record index>. Insert by <value> is invalid. Insert by set to 'Rate'.](#)

[Error importing CSV Complex Element record <record index>. Update rate <value><units> is out of range. Update rate has been set to <value><units>.](#)

[Error importing CSV tag <tag name>. Comparison <comparison> is invalid. Comparison set to Trigger Tag == Value.](#)

[Error importing CSV tag <tag name>. Data type <data type> is not valid for the tag type. Data type has been changed to <data type>.](#)

[Error importing CSV tag <tag name>. Maximum value <max value> is out of range. Maximum value has been set to <max value>.](#)

[Error importing CSV tag <tag name>. Run by <value> is invalid. Run by set to 'Rate'.](#)

[Error importing CSV tag <tag name>. Run by rate <value><units> is out of range. Run by rate has been set to <value><units>.](#)

[Error importing CSV tag <tag name>. Link mode <link mode> is invalid. Link mode set to On Data Change of Input Tag.](#)

[Error importing CSV tag <tag name>. Trigger type <trigger type> is invalid. Trigger type set to Always.](#)

[Error importing CSV tag <tag name>. Trigger scan rate <value> <units> is out of range. Trigger scan rate has been set to <value> <units>.](#)

[Error importing CSV tag <tag name>. Link rate <value> <units> is out of range. Link rate has been set to <value> <units>.](#)

[Error importing CSV tag <tag name>. Update by <update rate> is invalid. Update by set to <update rate>.](#)

[Error importing CSV tag <tag name>. Update rate <value><units> is out of range. Update rate has been set to <value><units>.](#)

[Error importing CSV tag data. No advanced tag records found in CSV file.](#)

**Error importing CSV complex element record <record index>. Insert by <value> is invalid. Insert by set to 'Rate'.**

---

### Error Type:

Warning

### Possible Cause:

The insert by action is invalid.

### Solution:

Change the insert by action to one that is valid (such as Rate or Trigger).

---

**Error importing CSV complex element record <record index>. Update rate <value><units> is out of range. Update rate has been set to <value><units>**

---

**Error Type:**

Warning

**Possible Cause:**

The complex tag element's update rate is out of range. The provided record index is the position of the complex tag element record in the complex tag elements section of the CSV file.

**Solution:**

Change the update rate to one within the valid range.

● **Note:**

The valid range is 10 milliseconds to 49 days.

---

**Error importing CSV tag <tag name>. Comparison <comparison> is invalid. Comparison set to Trigger Tag == Value.**

---

**Error Type:**

Warning

**Possible Cause:**

The comparison is invalid.

**Solutions:**

1. In the user interface, change the comparison to one that is valid.
2. Export the tag to a CSV file and change the comparison to one that is valid, then re-import the CSV file.

● **Note:**

Valid comparisons are as follows: Trigger Tag == value, Trigger Tag != value, Trigger Tag > value, Trigger Tag >= value, Trigger Tag < value, and Trigger Tag <= value.

---

**Error importing CSV tag <tag name>. Data type <data type> is not valid for the tag type. Data type has been changed to <data type>.**

---

**Error Type:**

Warning

**Possible Cause:**

The tag's data type in the CSV file is not valid.

**Solution:**

Change the tag's data type to one that is valid.



---

**Error importing CSV tag <tag name>. Maximum value <max value> is out of range. Maximum value has been set to <max value>.**

---

**Error Type:**

Warning

**Possible Cause:**

The tag's maximum value is out of range.

**Solution:**

Change the tag's maximum value to one within the valid range.

● **Note:**

The valid range is the range that can be represented by the tag's data type.

---

**Error importing CSV tag <tag name>. Run by <value> is invalid. Run by set to 'Rate'.**

---

**Error Type:**

Warning

**Possible Cause:**

The run by action is invalid.

**Solution:**

Change the run by action to one that is valid (such as Rate or Trigger).

---

**Error importing CSV tag <tag name>. Run by rate <value><units> is out of range. Run by rate has been set to <value><units>.**

---

**Error Type:**

Warning

**Possible Cause:**

The tag's run by rate is out of range.

**Solution:**

Change the tag's run by rate to one within the valid range.

● **Note:**

The valid range is 10 milliseconds to 49 days.

---

**Error importing CSV tag <tag name>. Link mode <link mode> is invalid. Link mode set to On Data Change of Input Tag.**

---

**Error Type:**

Warning

**Possible Cause:**

The link mode is invalid.

---

**Solutions:**

1. In the user interface, change the tag's link mode to a valid mode.
2. Export the tag to a CSV file and change the link mode to a valid mode, then re-import the CSV file.

**Note:**

The valid modes are On Data Change of Input Tag, On Data Change of Input Tag (Ignore Initial Update), and On Interval.

**Error importing CSV tag <tag name>. Trigger scan rate <value> <units> is out of range. Trigger scan rate has been set to <value> <units>.**

---

**Error Type:**

Warning

**Possible Cause:**

The tag's trigger scan rate is out of range.

**Solutions:**

1. In the user interface, change the tag's trigger scan rate to a value within the valid range.
2. Export the tag to a CSV file and change the trigger scan rate to a valid value, then re-import the CSV file.

**Note:**

The valid range is 50 milliseconds to 1800000 milliseconds.

**Error importing CSV tag <tag name>. Link mode <link mode> is invalid. Link mode set to On Data Change of Input Tag.**

---

**Error Type:**

Warning

**Possible Cause:**

The link mode is invalid.

**Solutions:**

1. In the user interface, change the tag's link mode to a valid mode.
2. Export the tag to a CSV file and change the link mode to a valid mode, then re-import the CSV file.

**Note:**

The valid modes are On Data Change of Input Tag, On Data Change of Input Tag (Ignore Initial Update), and On Interval.

**Error importing CSV tag <tag name>. Trigger type <trigger type> is invalid. Trigger type set to Always.**

---

**Error Type:**

Warning

**Possible Cause:**

The trigger type is invalid.

**Solutions:**

1. In the user interface, change the tag's trigger type to a valid type .
2. Export the tag to a CSV file and change the trigger type to a valid type , then re-import the CSV file.

**Note:**

The valid type are Always, While Trigger Comparison True, and On Trigger Comparison True.

**Error importing CSV tag <tag name>. Update by <update rate> is invalid. Update by set to <update rate>.**

---

**Error Type:**

Warning

**Possible Cause:**

The Update by rate is out of range.

**Solution:**

Change the Update by rate to one within the valid range.

**Note:**

The valid range is 50 to 1800000000.

**Error importing CSV tag <tag name>. Link rate <value> <units> is out of range. Link rate has been set to <value> <units>.**

---

**Error Type:**

Warning

**Possible Cause:**

The tag's link rate is out of range.

**Solutions:**

1. In the user interface, change the tag's link rate to a value within the valid range.
2. Export the tag to a CSV file and change the link rate to a valid value, then re-import the CSV file.

**Note:**

The valid range is 50 milliseconds to 1800000 milliseconds.

**Error importing CSV tag <tag name>. Update rate <value><units> is out of range. Update rate has been set to <value><units>.**

---

**Error Type:**

Warning

**Possible Cause:**

The tag's update rate is out of range.

**Solution:**

Change to the tag's update rate to one within the valid range.

**Note:**

The valid range is 10 milliseconds to 49 days.

---

**Error importing CSV tag data. No advanced tag records found in CSV file.****Error Type:**

Warning

**Possible Cause:**

The CSV file being imported does not contain any valid advanced tags records.

**Solution:**

Verify the CSV file's format and contents.

**See Also:**

[Advanced Tags CSV Import and Export](#)

---

**Derived Expression Messages**

The following messages may be generated. Click on the link for a description of the message.

[", expected.](#)

[\( expected.](#)

[\) expected.](#)

[Expression modified.](#)

[Numeric expression expected.](#)

[Please enter an expression.](#)

[String tag expected.](#)

[Syntax error: <syntax string>.](#)

[Unknown tag or misspelled keyword: <tag name>.](#)

[Unrepresentable numeric constant: <tag name>.](#)

[Unterminated string.](#)

---

**", expected.****Error Type:**

Warning

**Possible Cause:**

A string was entered in an expression that is missing a double quote.

**Solution:**

1. Place a double quote at the beginning.
2. Terminate the string.

### **( expected.**

---

#### **Error Type:**

Warning

#### **Possible Cause:**

1. A compound expression has been created that is missing an open parenthesis (to pair the close parenthesis).
2. An open and close parenthesis are next to each other without an operator between.

#### **Solution:**

1. Verify the expression and place the parentheses where they belong.
2. Place an operator between the parentheses.

### **) expected.**

---

#### **Error Type:**

Warning

#### **Possible Cause:**

1. A compound expression has been created that is missing a close parenthesis (to pair the open parenthesis).
2. An open and close parenthesis are next to each other without an operator between.

#### **Solution:**

1. Verify the expression and place the parentheses where they belong.
2. Place an operator between the parentheses.

### **Expression modified.**

---

#### **Error Type:**

Information

#### **Possible Cause:**

The saved expression was modified.

#### **Solution:**

Accept the modification so that it is saved.

---

**Numeric expression expected.**

---

**Error Type:**

Warning

**Possible Cause:**

A string expression was created for a numeric derived tag.

**Solution:**

Create a numeric expression.

---

**Please enter an expression.**

---

**Error Type:**

Warning

**Possible Cause:**

The expression string field was left blank.

**Solution:**

Enter an expression.

---

**String tag expected.**

---

**Error Type:**

Warning

**Possible Cause:**

1. An incorrect Math or Logic operator was used.
2. An attempt was made to create a string tag, and a non-string tag was referenced as part of the expression.

**Solution:**

1. Use the correct operator.
2. Use a string tag reference rather than a numeric tag reference.

---

**Syntax error: <syntax string>.**

---

**Error Type:**

Warning

**Possible Cause:**

The expression failed a syntax check.

**Solution:**

Verify the syntax, including the placement of all parentheses.

**Unknown tag or misspelled keyword: <tag name>.**

---

**Error Type:**

Warning

**Possible Cause:**

1. A tag was referenced that does not exist in the server project.
2. A tag was referenced that has been deleted from the project.
3. A keyword was misspelled.
4. An invalid keyword was entered.

**Solution:**

1. Create the referenced tag.
2. Reference a tag that exists.
3. Enter the correctly spelled keyword.

**Note:**

For the proper syntax, refer to the server's help documentation.

**Unrepresentable numeric constant: <tag name>.**

---

**Error Type:**

Warning

**Possible Cause:**

A constant was used in the expression that is either not numeric or cannot be converted to a numerical value.

**Solution:**

Change or redefine the constant so that it can be used.

**Unterminated string.**

---

**Error Type:**

Warning

**Possible Cause:**

1. A string was entered with no termination.
2. A string tag was referenced with no termination point.

**Solution:**

1. Terminate string constants. To do so, enclose any strings in the expression with double quotes.
2. Use only terminated string tags.

# Index

## A

Add Element 16

Advanced Tag Error Messages 34

Advanced Tag Groups 7

Advanced tag is invalid. Verify the tag references valid server tags and does not contain any references to itself or to an unsupported or array data type. 34

Advanced Tags Types 12

Arithmetic Operators 28

Average Tags 13

## C

Complex Tags 15

ComplexUpdate 15

CSV Error Messages 39

CSV Import/Export 7

## D

DataType 15

Delete Element 17

Derived Expression Error Messages 44

Derived Tags 17

## E

Error Descriptions 34

Error importing CSV complex element record <record index>. Insert by <value> is invalid. Insert by set to 'Rate'. 39

Error importing CSV complex element record <record index>. Update rate <value><units> is out of range. Update rate has been set to <value><units> 40

Error importing CSV tag <tag name>. Comparison <comparison> is invalid. Comparison set to Trigger Tag == Value. 40

Error importing CSV tag <tag name>. Data type <data type> is not valid for the tag type. Data type has been changed to <data type>. 40

Error importing CSV tag <tag name>. Link mode <link mode> is invalid. Link mode set to On Data Change



of Input Tag. 41-42

Error importing CSV tag <tag name>. Link rate <value> <units> is out of range. Link rate has been set to <value> <units>. 43

Error importing CSV tag <tag name>. Maximum value <max value> is out of range. Maximum value has been set to <max value>. 41

Error importing CSV tag <tag name>. Run by <value> is invalid. Run by set to 'Rate'. 41

Error importing CSV tag <tag name>. Run by rate <value><units> is out of range. Run by rate has been set to <value><units>. 41

Error importing CSV tag <tag name>. Trigger link mode <link mode> is invalid. Trigger link mode set to Always. 42

Error importing CSV tag <tag name>. Trigger scan rate <value> <units> is out of range. Trigger scan rate has been set to <value> <units>. 42

Error importing CSV tag <tag name>. Update by <update rate> is invalid. Update by set to <update rate>. 43

Error importing CSV tag <tag name>. Update rate <value><units> is out of range. Update rate has been set to <value><units>. 43

Error importing CSV tag data. No advanced tag records found in CSV file. 44

Expected (. 45

Expected ). 45

Expected comma. 44

Expression modified. 45

## F

Failed to write to tag <tag name> from link tag <link tag name>. 35

FILETIME 16

Functions 29

## H

Help Contents 5

## L

Link Tags 19

Logic Tags 31

**M**

Maximum Tags 23

Minimum Tags 25

Modify Element 17

**N**

Numeric expression expected. 46

**O**

Optimizing Performance 33

Oracle Cumulative Tags 26

Oracle MOC 15

Overview 5

**P**

Please enter an expression. 46

Plug-In Interface 6

**Q**

Quality 15

**R**

Rate 17

References to array tags with an unsupported or array data type are not allowed <tag name>. 35

**S**

Schema 15

String tag expected. 46

Syntax error: <syntax string>. 46

**T**

- Tag has an invalid expression <expression error>. 35
- The complex tag already references <tag name> and will not be re-added. 36
- The input and output tags cannot be the same. 36
- The tag must be writeable. 36
- The trigger and output tags cannot be the same. 36
- Timestamp 16
- TimeStamp 15
- Timestamp format 16
- Trigger 17

**U**

- Unable to start complete tag <tag name> for element <element> on tag <advanced tag name>. 36
- Unable to start complete tag <tag name> on tag <advanced tag name>. 37
- Unable to start element tag <tag name> on tag <advanced tag name>. 37
- Unable to start required tag reference <reference> in expression <expression>. 38
- Unable to start required tag reference <reference> on tag <tag name>. 37
- Unable to start trigger tag <tag name> for element <element> on tag <advanced tag name>. 38
- Unable to start trigger tag <tag name> on tag <advanced tag name>. 38
- Unknown tag or misspelled keyword: <tag name>. 47
- Unrepresentable numeric constant: <tag name>. 47
- Unterminated string. 47

**X**

- XML string 15