

EFM Exporter

© 2024 PTC Inc. All Rights Reserved.

Table of Contents

EFM Exporter	1
Table of Contents	2
EFM Exporter	6
EFM Drivers	9
User Interface	11
Poll Group	12
Meter Group	13
Meter	13
Exporters	15
CSV Exporter	16
Properties — General	17
Configuration Field Mappings	17
Alarm Field Mappings	19
Mapping CSV Attributes	20
Database Exporter	21
Configure DSN	22
Mapping Group Properties — General	23
Configuration Field Mappings	23
Alarm Field Mappings	24
Mapping Database Attributes	25
Flow-Cal Exporter (CFX)	26
Flow-Cal Transaction Queue Exporter	28
Configure DSN	29
PGAS Exporter	30
Mapping PGAS Exporter Attributes	31
Wildcards	37
Attribute Enumerations	39
CSV Import / Export	45
System Tags	52
Event Log Messages	55
Attribute look up for the meter_id failed for <meter name>. The MeterID wildcard is replaced with <Channel>_<Device>_<Meter>_NoMeterID.	55
<Error cause> may strand unexported data stored at <Location>. Stranded data will not be exported. Please see help file for more details.	55
Error adding exporter <exporter name>: can't add gas exporters to liquid meters and can't add liquid exporters to gas meters.	55

Expanded export path is too long. Export aborted: <path>. 56

Exporter <exporter> failed to append to the existing <file> file. A new file is being created. Data from the existing file will be deleted. 56

Exporter <exporter> failed to move meter data from temp directory <temp file> to <output file> (reason: <reason>). The data will stay in the temp directory, and an attempt will be made to move the file after the next poll. 56

Failed to add <EFM data that failed> data for meter <poll group name>.<meter type>.<channel name><device name><meter name>. 57

Failed to add meter <meter> to <poll group>. The meter already exists. 57

Failed to load data from <file name>. This data will not be available in future exports. 57

Failed to register meters for <poll group name>. Please verify the meter configuration is correct. Polling will not start until the problems are resolved. 58

Failed to remove temporary meter data file <file path>. Reason: Configuration change. 58

Failed to save EFM data for meter <meter> exporter <exporter> to target <target>. Reason: Failed to write EFM data to temporary file <file> (<error>). 59

Failed to save EFM data for meter <meter> exporter <exporter> to target <target>. Reason: Failed to update temporary data store file <file> (<error>). 59

Failed to save EFM data for meter <meter> exporter <exporter> to target <target>. Reason: Failed to reset data store file (<error>). 60

Failed to save EFM data for meter <meter> exporter <exporter> to target <target>. Reason: Failed to update temporary data store file <file> (<error>). 60

Failed to synchronize temporary data store at <file> for exporter <exporter>. 61

Failed to write the rollback amount because rollback is not currently supported by this archive. | Archive = <archive>. 61

Flow-Cal EFM data cached from the previously installed version is being converted. All EFM polls will be postponed until the conversion is complete. 62

Flow-Cal EFM data conversion complete. Legacy cached Flow-Cal EFM files have been moved to <backup directory>. 62

Flow-Cal EFM data conversion failed. <Extended Error>. Exported data will not include previously cached data. 63

Ignoring enable for <exporter>. The exporter group <exporter group> is disabled. 63

Ignoring enable for <meter>. The meter group <meter group> is disabled. 63

Ignoring on demand poll request for <meter>. A poll for this meter is already queued. 64

Ignoring on demand poll request for <meter>. The meter is disabled. 64

Ignoring on demand poll request for <meter>. The meter's group must have at least one enabled exporter and the meter must be licensed. 64

Ignoring on demand poll request for <poll group>. A poll is already in progress. 65

Ignoring on demand poll request for <poll group>. The group has not initialized yet, or one of the meters or exporters is incorrectly configured. 65

Ignoring on demand poll request for <poll group>. The group is disabled. 65

Ignoring on demand poll request for <poll group>. The group must have at least one enabled exporter and at least one enabled and licensed meter. 66

Mapping name invalid due to invalid characters, name length, or name duplication. Mapping <MappingPath.OldName> has been renamed to <NewName>.	66
Meter <Meter> returned bad quality EFM data. This EFM data will not be included in the output.	67
Meter <Meter> returned bad quality EFM data for [<EFM data that failed>]. This EFM data will not be included in the output.	67
No new data for meter <meter> exporter <exporter>.	68
<Poll group> ended on demand poll at <time>.	69
<Poll group> ended poll at <time>. Next poll scheduled for <time>.	69
<Poll group> first poll scheduled for <time> local time.	69
<Poll group> overran the next scheduled poll at <time>. The next poll has been rescheduled for <time> local time.	70
<Poll group> starting on demand poll at <time>.	70
<Poll group> starting scheduled poll at <time>.	70
The licensed device count of <device license limit> has been exceeded by <unlicensed device count> device(s).	71
The exporter <exporter> failed to output data for meter <meter>. The meter did not provide valid configuration data.	71
Error importing CSV data. Invalid exporter group path: <path>.	71
Error importing CSV data. Invalid meter group name: <meter group>.	72
Error importing CSV data. No records found in CSV file.	72
Error importing CSV tag data. Field buffer overflow reading identification record.	72
Error importing CSV tag data. Unrecognized field name: <field name>.	72
Error importing tag database. Duplicate field name: <field name>.	73
Error importing tag database. Missing tag field identification record.	73
Cannot connect to DSN <DSN name> - unable to connect to data source (Memory Exception).	73
Cannot connect to DSN <DSN name> - unable to connect to data source (Reason: <reason>).	74
Creation of at least one TIMESTAMP column for table <table name> has been requested. This has been adjusted to the MS-SQL required DATETIME.	74
Error importing CSV tag record <record number>: login timeout of <value> is out of range. Login timeout set to <value>.	74
Error importing CSV tag record <record number>: table generation type <type> is not supported. Table generation type set to <type>.	74
Error writing data to DSN <DSN name>, table <table name> (Reason: <reason>).	75
Failed to create table <table name> for unknown reason. SQL query: <query>.	75
Failed to create table <table name> on DSN <DSN name>. (Reason: <reason>).	75
Failed to create the data table <table name> - <reason> SQL query: <query>.	76
Failed to create the data table <table name> (Memory Exception). SQL query: <query>.	76
Failed to validate table <table name>. (Reason: The configured column name <column name> could not be found).	76
Table generation is not supported for ODBC driver.	76
Table validation failed. The table does not exist.	77

The query failed on DSN <DSN name>, table name <table name> because the data source is not appendable. Please double-check your user permissions.	77
Unable to open recordset on table <table name> (Memory Exception).	77
Unable to open recordset on table <table name> (Reason: <reason>).	77
Unable to retrieve column names on table <table name> because the table does not exist.	78
Unable to retrieve table column names on table <table name> (Reason: <reason>).	78
Unable to retrieve table names.	78
Unable to retrieve table names (Reason: <reason>).	78
Unable to validate table <table name> (Memory Exception).	79
Unable to validate table <table name> (Reason: <reason>).	79
Unknown error opening recordset on table <table name>.	79
The CFX version <CFX version> for Flow-Cal exporter <exporter name> is incompatible with the meter group type. Setting the CFX version to <default CFX file version>.	79
The history type <history type> for Flow-Cal exporter <exporter name> is incompatible with the meter group type. Setting the history type to <default history type>.	80
The history type <history type> for Flow-Cal exporter <exporter name> is incompatible with the CFX file version. Setting the history type to <default history type>.	80
Cannot connect to DSN <DSN name> - unable to connect to data source (Memory Exception).	80
Cannot connect to DSN <DSN name> - unable to connect to data source (Reason: <reason>).	81
Error writing data to DSN <DSN name>, table <table name> (Memory Exception).	81
Error writing data to DSN <DSN name>, table <table name> (Reason: <reason>).	81
Failed to validate table <table name>. (Reason: The configured column name <column name> could not be found).	82
Flow-Cal TXQ Exporter <exporter name> failed to output data. The specified DSN <DSN name> is not an Oracle DSN.	82
Table validation failed. The table does not exist.	82
The query failed on DSN <DSN name>, table name <table name> because the data source is not appendable. Please double-check your user permissions.	82
Index	84

EFM Exporter

Help version 1.140

CONTENTS

[Overview](#)

What is the EFM Exporter?

[EFM Exporter Interface](#)

How do I navigate the EFM Exporter?

[Attribute Enumerations](#)

What attribute enumerations are supported by the CSV and database exporters?

[CSV Import / Export](#)

How do I import and export a CSV file into the EFM Exporter?

[System Tags](#)

Which system tags does the EFM Exporter support?

[Event Log Messages](#)

What messages does the EFM Exporter produce?

Overview

In pipeline management of the oil and gas industry, it is necessary to collect both real-time and historical flow measurement data. Real-time data is used for monitoring well-site tank levels or equipment at compressor stations, and may also be used for controlling valves, pumps, and so forth. The historical flow data (sometimes referred to as "the audit trail") is used for allocations and custody transfer, which is a term used by the oil & gas industry for managing invoices and payments when one company's pipeline feeds into another company's pipeline. The data can also be used by operations to monitor performance. Because it is used for billing purposes, this data is extremely sensitive and needs to be accurate, reliable, and auditable.

Historical flow data is often referred to as Electronic Flow Measurement (EFM). The data consists of hourly and daily flow averages calculated by flow computers reading raw data from one or more flow meters. It also consists of configuration data, alarms, and events. The hourly and daily averages are calculated and stored because it often is not possible to access real-time flow values due to remote geographic locations and the number of flow computers. Furthermore; radio, cellular, and satellite communications are frequently needed to reach these devices. Due to the low bandwidth of these networks and the large number of devices with which a company may be communicating, it is necessary to schedule specific times to communicate with the devices.

The EFM Exporter manages the scheduled polling and exporting of EFM data from flow computers. Customers can group meters under specific poll schedules, and upload data into flow measurement and accounting solutions (like Flow-Cal and PGAS) as well as to user-defined CSV and database formats. Furthermore, the EFM Exporter uses consistent appearance and navigation for oil & gas companies that manage both liquid and gas products.

Supported Export Formats

- Flow-Cal CFX V5 and V8 for gas meter types and V7 and V8 for liquid meter types
- Flow-Cal Transaction Queue
- CSV
- Database
- PGAS V8

[Licensing the EFM Exporter](#)

Licensing the EFM Exporter

The EFM Exporter uses a tiered, device-count-based licensing model. A license can be purchased that enables the product to run for an unlimited amount of time for a fixed maximum number of unique EFM devices. The license limit does not prevent the addition of new EFM devices beyond the allowed EFM device count, nor does it signal the product to enter Time Limited mode; it prevents EFM data uploads beyond the allowed license count.

The licensed and configured EFM device counts are reported in the Event Log on server startup, when the runtime server re-initializes, or when a unique EFM device is added or removed in the configuration that exceeds the EFM device limit allowed by the license. A unique device is defined as one instance of the channel-device combination. Any number of meters may be added to a device without consuming an additional device license.

Below is an example startup server informational Event Log message indicating a 1000 EFM Device license installed with 789 unique EFM devices configured in the project:

"License Type: Counted, License Limit: 1000, Devices: 789 licensed, 0 unlicensed."

Below is an example Event Log warning message when a license is exceeded. In this example, there is a 1000 EFM device license installed and 1007 unique EFM devices in the project:

"The licensed device count of 1000 has been exceeded by 7 device(s)."

If the license limit is exceeded, existing unique EFM device references can be removed to return within the limits of the license or to allow new unique EFM devices to be added and utilized. When the EFM device count is back under the license limit, an Event Log message is no longer posted to indicate the product has exceeded the limits.

● **Note:** When the license limit is exceeded, the EFM Exporter processes the licensed number of unique EFM devices configured; the devices considered licensed can vary based on the order they are loaded in the server during startup.

Unlicensed Operation

When no license is installed, the product enters Time Limited mode, which allows a time-based limit that stops working when Time Limited mode expires.

EFM Drivers

The EFM Exporter only works with EFM drivers, which are drivers that expose meters and usually contain some level of EFM-specific configuration. EFM drivers share several functions that affect the EFM Exporter.

Interleaving

EFM drivers are responsible for interleaving real-time data (tag) requests and EFM polls. This allows real-time tag updates to continue for a channel while EFM data is being polled for a device.

● **Note:** While interleaving, the priority in order of highest to lowest is as follows: writes, reads, and exception-based reads. EFM polls are considered reads.

New EFM Data

EFM drivers are responsible for caching the latest EFM data that has been gathered from the device to ensure that each poll only requests new EFM data. For example, after startup, the first poll requests all the History data in the device. The next poll only retrieves the new History data recorded after the first poll.

Cached EFM Data

All EFM drivers clear their cached state when a new project is loaded. Once cleared, the first poll requests all the data in the device. All other scenarios that cause the cached state to clear are driver-specific. For more information, refer to the specific driver's help file.

● Drivers can also clear the cache through the user interface. *For more information, refer to the specific driver's help file.*

Shared EFM Data

Some devices have shared data. For example, a device may have one Alarm archive for all meters. The driver is responsible for ensuring that the Shared EFM data is only read once per poll, even if multiple meters are defined that rely on the same shared data.

Missing EFM Data

If EFM data is missed because of a communications error, the driver continues to cache the latest good data that is retrieved from the device. When communications return, the EFM Exporter re-polls the device at the scheduled poll interval and the driver queries for new data (which includes the missing data). Client applications can trigger a poll to speed this process.

Time Zone

Users are responsible for understanding the physical device's time zone and Daylight Savings Time capabilities. Configuring the EFM-compatible driver's time zone and Daylight Savings Time to match the physical device ensures that record times are accurately converted by the exporters that perform that function.

EFM Pointer Files

EFM pointer files are used by EFM drivers to persist flow computer EFM archive positions across server restarts. Preserving this state information allows EFM drivers to minimize the amount of data uploaded from a flow computer after the server restarts. The pointer files are maintained in the server's application data directory, which is a directory that is configured when the server is installed. The server maintains these pointer files across server restarts, upgrades, and uninstallations, except when the **Remove user data. The current Runtime project and custom server settings are removed.** option is selected when uninstalling.

The server can be forced to upload all available EFM data from a flow computer by performing a "Clear Cache" on the device associated with the desired meters. For instructions on clearing the cache, refer to the specific driver's help file.

- **Note:** EFM drivers expose system tags that allow clients to control a device's EFM pointer file and cache.
- For more information, refer to the [System Tags](#).

EFM Pointer Rollback

The archive positions, stored by the EFM Pointer File, can be manually rolled back to an early position in the archive using system tags provided by the EFM Exporter. These tags allow a user to configure how far back the archive positions should move on an individual archive basis. This feature provides similar functionality to “Clear Cache” except it allows a user to specifically control which records they want to retrieve again.

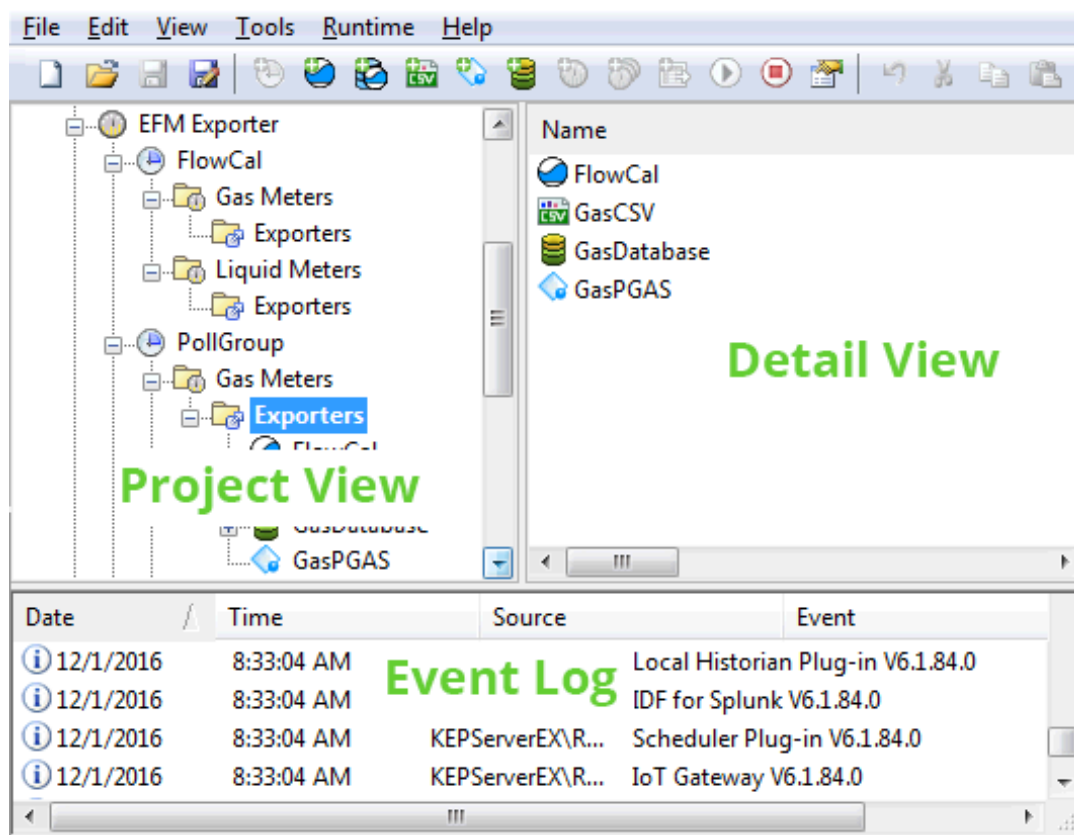
- **Note:** If the archive positions in the EFM Pointer File are invalid (for example, when commissioning a new server or when clear cache has been selected), the rollback value is applied to the current archive pointer from the device; thus rolling back from the newest record in the archive.

- *This feature is not available for all drivers and device configurations. Please refer to driver specific help for EFM Pointer Rollback support information.*

- For more information, refer to the [System Tags](#).

User Interface

The EFM Exporter interface is divided into three panes: the Project View, the Detail View, and the Event Log.



Project View: This view displays poll groups, which control when EFM data is collected. Each poll group contains a folder for gas meters and liquid meters, which in turn contain a folder for exporters. Meters represent a meter that is attached to a device or flow computer. There may be multiple meters for one device. Exporters represent the output formats that are supported by the plug-in. Database and CSV exporters contain mapping group folders. These folders represent collections of configurable EFM data that is exported when an exporter polls. The poll group polls child meters for EFM data and then passes that data to the exporters (which are the output formats supported by the EFM Exporter).

For more information, refer to [Poll Group](#), [Meter](#), and [Exporters](#).

Detail View: This view depends on the folder that is selected in the Project View. When the gas meters or liquid meters folder is selected, the Detail View displays the meters that are assigned to the poll group. When the exporters folder is selected, the Detail View displays the exporters that are utilized in the poll group. When a mapping groups folder is selected, the Detail View displays the utilized mappings.

For more information, refer to [Meter](#).

Event Log: This displays error, warning, and information messages for the plug-in and the server. The source of EFM Exporter events is EFM Exporter.

Poll Group

The poll group controls when EFM data is collected from the child meters and exported through the child exporters.

Notes:

- Meters in a poll group are polled individually / one at a time.
- EFM data is not stored in an intermediate database: it comes directly from the meter and goes directly to the exporter.

Property Groups																					
General																					
<table border="1"> <thead> <tr> <th colspan="2">Identification</th> </tr> </thead> <tbody> <tr> <td>Name</td> <td>PollGroup</td> </tr> <tr> <td>Description</td> <td></td> </tr> <tr> <th colspan="2">Configuration</th> </tr> <tr> <td>On Demand Polling Only</td> <td>No</td> </tr> <tr> <td>Poll Rate</td> <td>1</td> </tr> <tr> <td>Poll Rate Units</td> <td>hours</td> </tr> <tr> <td>Base Start Time</td> <td>12:00:00 AM</td> </tr> <tr> <td>Poll On Start</td> <td>No</td> </tr> <tr> <td>Enabled</td> <td>Yes</td> </tr> </tbody> </table>		Identification		Name	PollGroup	Description		Configuration		On Demand Polling Only	No	Poll Rate	1	Poll Rate Units	hours	Base Start Time	12:00:00 AM	Poll On Start	No	Enabled	Yes
Identification																					
Name	PollGroup																				
Description																					
Configuration																					
On Demand Polling Only	No																				
Poll Rate	1																				
Poll Rate Units	hours																				
Base Start Time	12:00:00 AM																				
Poll On Start	No																				
Enabled	Yes																				

Name: Specify a unique name for the poll group. The default setting is "PollGroup."

Description: Specify a short phrase to describe this in a manner that identifies the data or purpose in reports or downstream analysis (optional).

On Demand Polling Only: When enabled, this option specifies that polling only occurs on writes to the poll group's poll tag. The server does not schedule polls. The default setting is disabled.

Note: The poll group's poll tag is available through OPC and other client interfaces that are supported by the server. This allows any OPC client to control polling.

Poll Rate: Specify the amount of time between EFM data polls, and may be set in terms of Minutes, Hours, or Days as configured in the Poll Rate Unit property. The valid range is 1 minute to 90 days. The default setting is 1 hour.

Note: On Demand polls and polls on Start do not affect scheduled polls.

Poll Rate Units: Specify the units used by the Poll Rate property. Units can be minutes, hours, or days.

Base Start Time: Specify the base 24-hour time at which polling starts. The default setting is 12:00 AM.

Notes:

1. If the poll rate is greater than 24 hours, this time represents the time of day to start the first poll. For example, if the **Base Start Time** is set to 10:01:00 AM, the poll rate is 24 hours, and it is currently 1:10:00 PM; the first poll occurs the next day at 10:01:00 AM. If the poll rate is less than 24 hours, polling begins at the next available interval (as if it started at the Base Start Time). For example, if the **Base Start Time** is 10:01:00 AM, the poll rate is 1 hour, and it is currently 1:10:00 PM; the first poll occurs at 2:01:00 PM.

2. **Base Start Time** does not adjust for Daylight Savings Time. If polls need to correspond with Daylight Savings Time, a restart is required after a Daylight Savings Time transition to synchronize to the adjusted time.
3. Changes to the **Base Start Time**, and the next poll timing, do not take effect while a poll is in progress. The next poll start (`_NextPollStart`) timing is updated after a poll has completed (when a poll is not in progress). These changes are reported in the event log.

Poll On Start: When enabled, this option starts a poll as soon as the EFM Exporter is started. This occurs when the server is restarted, stopped / started, when a new project is loaded, or when the EFM Exporter is edited. The default setting is disabled.

Enabled: When enabled, this option enables polling in the EFM Exporter. When unchecked, the EFM Exporter does not poll. The default setting is enabled.

Failed Polls

Polls can fail for a meter under the following conditions:

- When the device experiences a failure in communications, which prompts a meter to return bad quality data.
- When the serial device is configured with an invalid COM port, or has specified a connection type of None.

In both failure scenarios, the poll group continues to gather available EFM data. It fails to export any EFM data that could not be gathered and displays an error message in the Event Log in consequence. The EFM data successfully gathered is exported.

Meter Group

Every meter group has the following properties, which are common across all meters in the group:

Name: Verify the name. This field is read-only.

Enabled: Select Yes to enable the output for this group. The default setting is Yes (enabled).

Property Groups	[-] Identification	
General	Name	Liquid Meters
	[-] Configuration	
	Enabled	Yes

Meter

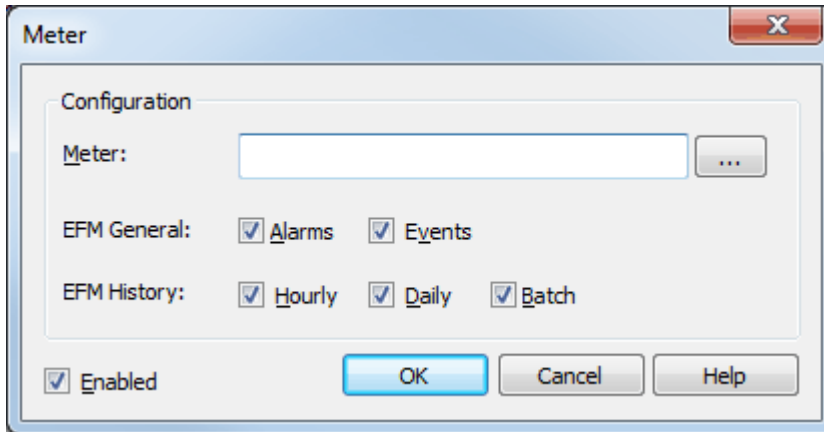
Each EFM Device has one or more gas or liquid meters that may contain optional EFM data. When polling, EFM data is gathered for each meter in the following order:

- Configuration
- Liquid Product
- History (Hourly, Daily, and Batch)
- Alarms
- Events

Notes:

1. Batch and Liquid Product meter data is only available to liquid meters.
2. A gas meter poll only collects new History, Alarms, and Events data for a gas meter. A liquid meter poll only collects new History, Alarms, Events, and Batch data for a liquid meter. These types of EFM data are optional.

Important: The device configuration controls the data that is gathered as well as how the data is mapped to internal EFM Attributes. For more information, refer to the specific driver's help file.



Meter: Specify the meter name. When browsing, the meter name is automatically generated using the format `<Channel>.<Device>.<MeterName>`, where `<Channel>` and `<Device>` are created and named in the server's Channels/Devices Project View, and the `<MeterName>` is set in the `<Device>` configuration. For example, "EFM Simulator.Device1.GasMeter1".

Note: To browse the server configuration for meters, click the browse icon. For more information, refer to [Meter Browser](#).

EFM General: Specify the type of data that the EFM Exporter reads for the meter. Options include Alarms and Events. All options are checked by default when applicable. Descriptions of the options are as follows:

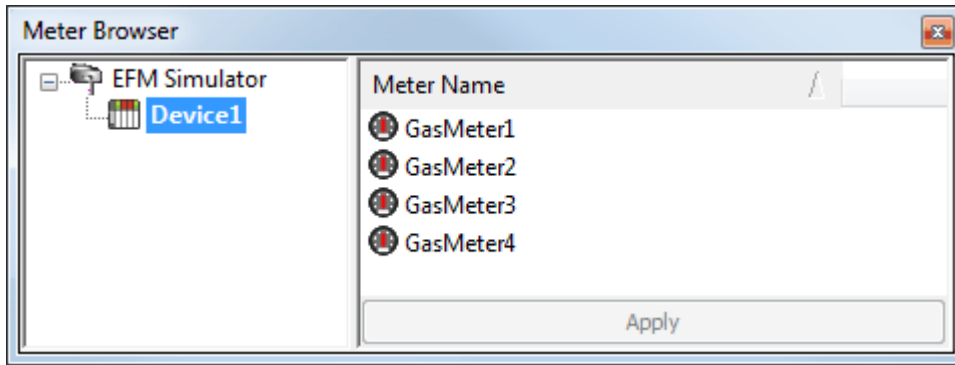
- **Alarms:** When enabled, meter Alarms are uploaded. The device configuration defines what constitutes a meter Alarm.
- **Events:** When enabled, meter Events are uploaded. The device configuration defines what constitutes a meter Event.

EFM History: Specify the history data to be collected for the meter. Options include hourly and daily (batch is available to liquid meters only). All options are enabled by default when applicable. Device configuration controls the EFM data in a record based on the enabled option(s).

Enabled: When enabled, this option enables data export in the meter. When disabled, the EFM Exporter does not pull any data from the meter. The default setting is enabled.

Meter Browser

Only EFM-enabled devices of the specific meter type are displayed. For example, when adding a new meter to the gas meters folder, users are only able to browse for available gas EFM meters. Liquid EFM meters are not displayed to help avoid configuration errors.



Best Practices

It is not recommended that users include a device under multiple poll groups. The server caches EFM data (e.g. last poll time) for each device. If a device is in more than one poll group, this can result in inconsistent data being exported by each poll based on poll timing. For example, data collected for a device by the first poll group is not re-collected by the next poll group.

Exporters

Exporters take the data that was collected from each meter during a poll and then export it to a given format. Exporters ignore meter data that they are not configured to export. If an exporter requires meter data that is not available, it outputs an Event Log message. An exporter's configuration and behavior is unique, and depends on the exporter type. For more information on a specific exporter, select a link from the list below.

[CSV Exporter](#)

[Database Exporter](#)

[Flow-Cal Exporter \(CFX\)](#)

[Flow-Cal Transaction Queue Exporter](#)

[PGAS Exporter](#)

Every exporter group has the following properties, which are common across all exporters in the group:

Name: Verify the name. This field is read-only.

Enabled: Select Yes to enable the output for this group. The default setting is Yes (enabled).

Property Groups	<input type="checkbox"/> Identification	
General	Name	Exporters
	<input type="checkbox"/> Configuration	
	Enabled	Yes

• The "Enable" and "Disable" icons are conveniently located in the EFM Exporter toolbar for quick access. When a group is disabled, all child objects beneath it are also disabled. When the group is disabled, users cannot enable an exporter.

CSV Exporter

The CSV exporter exports gas or liquid meter EFM data to CSV files. An output file is created for each enabled mapping group; for gas meters, that can be Config, Alarms, Events, and History; for liquid meters, that can be Config, Liquid Product, Alarms, Events, History, and Batch. Each of these types are represented by configurable mapping groups under the exporter.

● **Note:** When actively reading or writing CSV data, the CSV exporter enforces a file-locking scheme that prohibits external entities from opening the output file until the read or write is complete.

Property Groups																
General	<div style="border: 1px solid black; padding: 5px;"> <div style="border-bottom: 1px solid black; padding-bottom: 5px;"> Identification </div> <table border="1" style="width: 100%; border-collapse: collapse;"> <tr> <td style="width: 30%;">Name</td> <td>GasCSV</td> </tr> <tr> <td>Description</td> <td></td> </tr> </table> <div style="border-bottom: 1px solid black; padding-bottom: 5px;"> Configuration </div> <table border="1" style="width: 100%; border-collapse: collapse;"> <tr> <td>Enabled</td> <td>Yes</td> </tr> </table> <div style="border-bottom: 1px solid black; padding-bottom: 5px;"> Record Time </div> <table border="1" style="width: 100%; border-collapse: collapse;"> <tr> <td>Time Basis</td> <td>Device Time</td> </tr> <tr> <td>Time Format</td> <td>MM-DD-YYYY hh:mm:ss</td> </tr> </table> <div style="border-bottom: 1px solid black; padding-bottom: 5px;"> Encoding </div> <table border="1" style="width: 100%; border-collapse: collapse;"> <tr> <td>Character Encoding</td> <td>UTF-8</td> </tr> <tr> <td>Delimiter</td> <td>Comma (,)</td> </tr> </table> </div>		Name	GasCSV	Description		Enabled	Yes	Time Basis	Device Time	Time Format	MM-DD-YYYY hh:mm:ss	Character Encoding	UTF-8	Delimiter	Comma (,)
Name	GasCSV															
Description																
Enabled	Yes															
Time Basis	Device Time															
Time Format	MM-DD-YYYY hh:mm:ss															
Character Encoding	UTF-8															
Delimiter	Comma (,)															

Name: Specify the name of the CSV exporter that is being configured. When a new CSV exporter is created, this property generates a name that is unique across all other exporters. The name can be customized from the defaults of "GasCSV" and "LiquidCSV". Each additional file created has an automatically incremented integer attached to the end of the name.

Description: Specify a short phrase to describe this in a manner that identifies the data or purpose in reports or downstream analysis (optional).

Enabled: Select Yes to enable polling in the CSV exporter. Select No to disable so the CSV exporter does not poll. The default setting is Yes / Enabled.

Time Basis: Specify the format of the EFM time records. Options include Device Time, UTC, and Local System Time. The default setting is Device Time. Descriptions of the options are as follows:

- **Device Time:** When selected, the EFM time records are the default time of the device.
 - **UTC:** When selected, the EFM time records are in Coordinated Universal Time (UTC).
 - **Local System Time:** When selected, the EFM time records are the time of the local system.
- **Note:** This setting does not affect any wildcards that may be set in the Time Format property.

Time Format: This property allows users to edit the Time Format of the output file. Wildcards include MM, DD, YYYY, hh, mm, ss, and AMPM. Users can arrange the wildcards in any order and delimit them as desired. All other characters are output as written. The default setting is MM-DD-YYYY hh:mm:ss.

● **Important:** If the string is changed to YYYY-DD-MM hh:mm:ss and the output CSV is loaded to Microsoft Excel, the string is interpreted and displayed according to Excel's own date/time column rules.

● **Note:** Records are stored in memory as UTC. To load and convert record times to a different Time Basis (e.g. manage Daylight Saving Time), all elements of the time/date must be recorded. For example, if a user enters "DD-MM-YY hh:mm (AMPM)" and the current record time is "09/12/2012 16:05", the value output to the file is "12-09-12 4:05 (PM)".

Character Encoding: Specify the character encoding, which affects the text that is generated on one computer or system and consumed on another computer or system. Options include UTF-8 and ANSI. The

default setting is UTF-8. Descriptions of the options are as follows:

- **UTF-8:** When selected, the code points are represented by sequences of bytes that are up to 4 bytes long. UTF-8 (or 8-bit Unicode Transformation Format) is a variable length character encoding for Unicode that is ANSI compatible and compact. Information about the length of the sequence is encoded in the upper bits of each byte of the sequence.
- **ANSI:** When selected, ASCII encoding is extended to different languages. The lower 127 characters retain the ASCII character mapping and the top 128 characters vary depending on the system.
 - **Note:** If a file is selected for import that does not contain a Byte Order Mark (BOM), the import assumes UTF-8.

Delimiter: Specify the separator character used in writing. It is ignored when reading. Options include comma and semi-colon. The default setting is comma.

● The **Defaults** button restores the settings to the default / pre-set values.

Properties — General

The General properties group support one set of records for a given output. The attribute lists depends on the meter type: gas or liquid. Gas exporters expose Config, Alarms, Events, and History data. Liquid exporters additionally expose Batch and Liquid Product data.

Property Groups General	[-] Identification	
	Name	Config
	[-] Configuration	
	File Path	C:\ProgramData
	Open Export Path	Open
	File Name	MeterName _Config.csv
	Enabled	Yes

Name: Verify the name. This field is read-only.

File Path: Specify the output file location on the file system. Although a path is generated by default (using wildcards for the Poll group name, exporter name, record year, and record month), users can browse to and select a different location. Click the **(...) Browse** button to locate and select a new file location.

Open Export Path: Click the [Open](#) text to open the file path without wildcards.

File Name: Specify the name of the record. It can be used for more than one set of records. The default setting is based on selected type.

Enabled: Select Yes to enable the output for this object. The default setting is Yes (enabled).

Configuration Field Mappings

The Config Output supports a number of enumerated values. *For more information, refer to the table below.*¹

Property	Description
Meter Type	Orifice = 1 Positive Displacement = 2 Turbine = 3

Property	Description
	Ultrasonic = 4 Liquids = 5 Vcone = 6 Coriolis = 7 Line Pack = 8
Calculation Method	Aga3 1985 = 1 Aga3 1992 = 2 Aga5 = 3 Aga7 = 4 Vcone4 = 5 Aga11 = 6 Line Pack Calc = 7
Meter Tap	Flange = 1 Pipe = 2
Static Pressure Tap	Up = 1 Down = 2
Units of Measurement	English = 1 Metric = 2
Hourly Record Span	Leading = 1 (Leading Contract Hour 8 = 8:00-8:59) Trailing = 2 (Trailing Contract Hour 8 = 7:01-8:00)
BTU Base	Wet = 1 Dry = 2 As Delivered = 3
Pipe and Plate Material	Stainless Steel = 1 Carbon Steel = 2 Monel = 3
FPV Method	Nx 19 = 1 Aga8 Detail = 2 Aga8 Gross1 = 3 Aga8 Gross2 = 4
Static Pressure Type	Gauge = 1 Absolute = 2
Unit Volume	Million Cubic Meters = 1 Thousand Cubic Meters = 2 ² Hundred Cubic Meters = 3 Cubic Meters = 4 Million Cubic Feet = 5 Thousand Cubic Feet = 6 ³ Hundred Cubic Feet = 7 Cubic Feet = 8
Unit K Factor	Counts Per Million Cubic Meters = 1 Counts Per Thousand Cubic Meters = 2 ² Counts Per Hundred Cubic Meters = 3 Counts Per Cubic Meter = 4 Counts Per Million Cubic Feet = 5 Counts Per Thousand Cubic Feet = 6 ³

Property	Description
	Counts Per Hundred Cubic Feet = 7 Counts Per Cubic Foot = 8

● **Notes:**

1. This table refers to attributes that are specific to gas meters.
2. This is the default if the units are Metric.
3. This is the default if the units are English.

Alarm Field Mappings

The Alarms Output type includes the following properties:

- A timestamp (displayed in Device, Host system, or UTC time format) that marks when the alarm occurred.
- The type of alarm.
- The state of the alarm.
- The value of the alarm.
- The data type of the alarm value.

● **Note:** The type, state, and alarm value data type fields are output as numeric codes. *For more information, refer to the table below.*

Property	Mapping
Alarm Data Type	Output corresponds to the Win32 VARTYPE data type.*
Alarm State	Off = 1 On = 2 Hi = 3 Lo = 4
Alarm Type	None = 0 Differential Pressure = 1 Static Pressure = 2 Temperature = 3 Cutoff = 4 Backflow = 5 Battery = 6

*Values for this data type correspond to the VarEnum enumeration, which is documented by Microsoft/MSDN at [VarEnum Enumeration](#).

Mapping CSV Attributes

Property Groups	[-] Identification	
General	Name	meter_name
	Description	
	[-] Configuration	
	Attribute	Meter Name
	Attribute Description	The name of the meter as it appears in the user interface
	Data Type	String

Name: Specify the column name for the new EFM attribute. The default setting is ColumnName for new mappings.

Description: Specify a short phrase to describe this in a manner that identifies the data or purpose in reports or downstream analysis (optional).

Attribute: This drop-down menu lists all attributes that are available for selection. An attribute can be mapped to more than one column and appear multiple times in the row of CSV data. The default setting is <none>.

● **Note:** An attribute that is specified as <none> is displayed as an empty column in the row of CSV data. This may be useful for adding lines of space to an output record.

Attribute Description: Verify this read-only property shows the correct detailed description of the selected attribute.

Data Type: This specifies the attribute's default data type. The default setting is <none>.

● **Note:** The order of the items in the Attribute list is significant. The top item represents the leftmost CSV column; the bottom item represents the rightmost CSV column.

● **Important:** The order by which mappings are exported in the CSV file can only be modified by editing the order in a serialized JSON file. To do so, save the project and manually edit the JSON file.

Database Exporter

The Database Exporter exports gas or liquid meter EFM data to SQL or ODBC databases for analytical and storage purposes. An output file is created for each enabled EFM type; for gas meters, that can be Config, Alarms, Events, Hourly History, and Daily History; for liquid meters, that can be Config, Liquid Product, Alarms, Events, Hourly History, Daily History, and Batch. Each of these types are represented by configurable mapping groups under the exporter.

Property Groups																		
General	<div style="border: 1px solid black; padding: 2px;"> <div style="border-bottom: 1px solid black; padding: 2px;"> Identification </div> <div style="padding: 2px;"> <table border="1" style="width: 100%; border-collapse: collapse;"> <tr> <td style="width: 50%;">Name</td> <td>GasDatabase</td> </tr> <tr> <td>Description</td> <td></td> </tr> </table> </div> <div style="border-bottom: 1px solid black; padding: 2px;"> Record Time </div> <div style="padding: 2px;"> <table border="1" style="width: 100%; border-collapse: collapse;"> <tr> <td style="width: 50%;">Time Basis</td> <td>Device Time</td> </tr> </table> </div> <div style="border-bottom: 1px solid black; padding: 2px;"> Data Source Properties </div> <div style="padding: 2px;"> <table border="1" style="width: 100%; border-collapse: collapse;"> <tr> <td style="width: 50%;">Data Source</td> <td></td> </tr> <tr> <td>User Name</td> <td></td> </tr> <tr> <td>Password</td> <td>*****</td> </tr> <tr> <td>Login Timeout (s)</td> <td>5</td> </tr> </table> </div> <div style="padding: 2px;"> Configuration </div> <div style="padding: 2px;"> <table border="1" style="width: 100%; border-collapse: collapse;"> <tr> <td style="width: 50%;">Enabled</td> <td>Yes</td> </tr> </table> </div> </div>		Name	GasDatabase	Description		Time Basis	Device Time	Data Source		User Name		Password	*****	Login Timeout (s)	5	Enabled	Yes
Name	GasDatabase																	
Description																		
Time Basis	Device Time																	
Data Source																		
User Name																		
Password	*****																	
Login Timeout (s)	5																	
Enabled	Yes																	

Name: Specify a unique name for the exporter. Each EFM Exporter must have a unique name that can neither start with an underscore nor contain a period. The maximum length is 1024 characters. The name can be customized from the defaults of "GasDatabase" and "LiquidDatabase".

Description: Specify a short phrase to describe this in a manner that identifies the data or purpose in reports or downstream analysis (optional).

Time Basis: Specify the format of the EFM time records. Options include Device Time, UTC, and Local System Time. The default setting is Device Time. Descriptions of the options are as follows:

- **Device Time:** When selected, the EFM time records are the default time of the device.
- **UTC:** When selected, the EFM time records are in Coordinated Universal Time (UTC).
- **Local System Time:** When selected, the EFM time records are the time of the local system.

Data Source: Specify the DSN for the database. *For more information, refer to [Configure DSN...](#)*


Note: If changes are made to the DSN configuration in the Microsoft ODBC Data Source Administrator, the exporter must be disabled and re-enabled to use the new DSN configuration. Starting and stopping the server also applies the new DSN configuration to the exporter.

User Name: Specify a user name for the DSN. It is only necessary if the data source requires it.

Password: Specify a password for the DSN. It is only necessary if the data source requires it.

Login Timeout: Specify how long the server waits for a response when attempting to connect to the DSN. At the end of that time, the connection attempt times out. The valid range is 1 to 99999 seconds. The default setting is 5 seconds.

Enabled: This option enables polling in the database exporter. When disabled, the database exporter does not poll. The default setting is enabled.

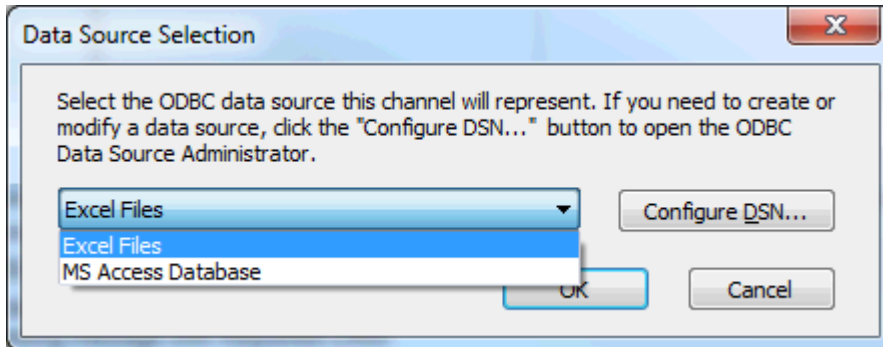
 The **Defaults** button restores the settings to the default / pre-set values.

 **See Also:** [Configure DSN](#)

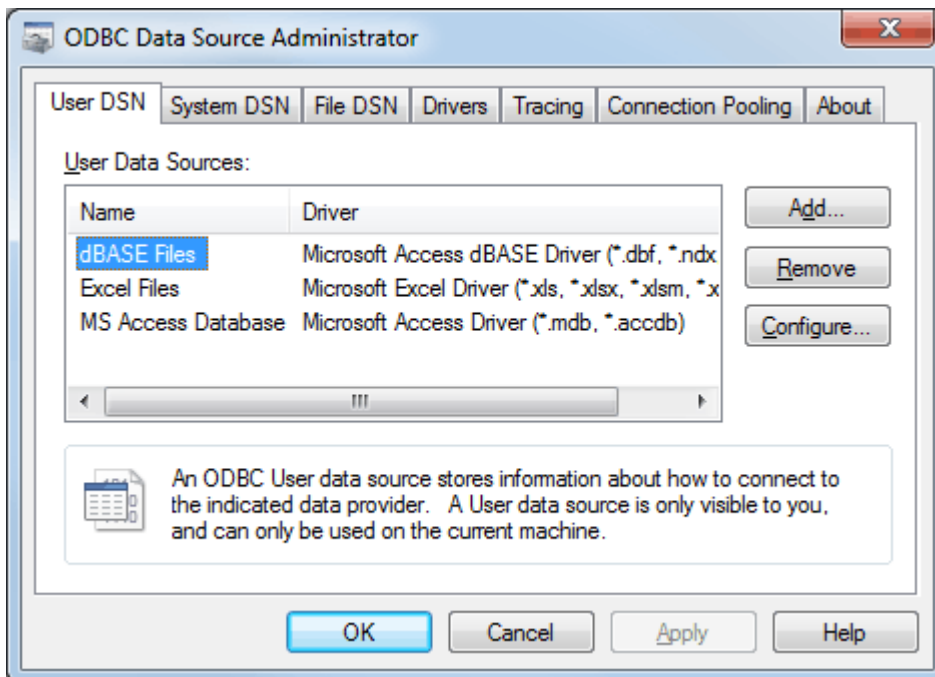
Configure DSN

The Flow-Cal Transaction Queue Exporter supports only an Oracle database DSN. The Database Exporter supports MS SQL Server, MySQL, PostgreSQL, and MS Access DSNS.

1. To start, click the Browse button associated with the Data Source property to launch the Data Source Selection dialog.
2. Select the data source you wish to connect to. If you have not yet configured the data source. Click the **Configure DSN...** button to launch the Microsoft® ODBC Data Source Administrator dialog.



3. In the Microsoft® ODBC Data Source Administrator dialog, select the **User DSN** or **System DSN** tab depending on the type of DSN that is needed. Next, click **Add...**
 - For more details, see the *ODBC Data Source Administrator help*.



4. In **Create New Data Source**, locate and select the driver for the specific database. Then, click **Finish**.
5. Continue through the DSN Wizard.
 - **Note:** The dialogs and fields presented in the DSN Wizard depends on the database connected

and the DSN configured. If presented with a **Test** button, select it to verify that the DSN setup is functional.

Mapping Group Properties — General

Each mapping group's properties supports one set of mappings. The attribute mapping lists depend on the exporter and meter type. Gas exporters expose Config, Alarms, Events, and History mapping groups. Liquid exporters additionally expose Batch and Liquid Product mapping groups. Mappings can be configured from the detail view when a mapping group is selected.

Property Groups	<input type="checkbox"/> Identification Name	
General	<input type="checkbox"/> Table Selection Table Selection Create and Append	
	Table Name	
	<input type="checkbox"/> Configuration Enabled Yes	

Name: Verify the name. This field is read-only.

Table Selection: Specify how the data populates a table. Options include an Existing Table and Create and Append, which creates a new table once and always attempts to append to that table.

Table Name: Specify the table name. Click the **(...) Browse** button to query the database for table names to select if the Table Selection option is set to Existing Table.

Enabled: Select Yes to enable the database export. The default setting is enabled.

Configuration Field Mappings

The Config Output supports a number of enumerated values. *For more information, refer to the table below.*¹

Property	Description
Meter Type	Orifice = 1 Positive Displacement = 2 Turbine = 3 Ultrasonic = 4 Liquids = 5 Vcone = 6 Coriolis = 7 Line Pack = 8
Calculation Method	Aga3 1985 = 1 Aga3 1992 = 2 Aga5 = 3 Aga7 = 4 Vcone4 = 5 Aga11 = 6 Line Pack Calc = 7
Meter Tap	Flange = 1 Pipe = 2

Property	Description
Static Pressure Tap	Up = 1 Down = 2
Units of Measurement	English = 1 Metric = 2
Hourly Record Span	Leading = 1 (Leading Contract Hour 8 = 8:00-8:59) Trailing = 2 (Trailing Contract Hour 8 = 7:01-8:00)
BTU Base	Wet = 1 Dry = 2 As Delivered = 3
Pipe and Plate Material	Stainless Steel = 1 Carbon Steel = 2 Monel = 3
FPV Method	Nx 19 = 1 Aga8 Detail = 2 Aga8 Gross1 = 3 Aga8 Gross2 = 4
Static Pressure Type	Gauge = 1 Absolute = 2
Unit Volume	Million Cubic Meters = 1 Thousand Cubic Meters = 2 ² Hundred Cubic Meters = 3 Cubic Meters = 4 Million Cubic Feet = 5 Thousand Cubic Feet = 6 ³ Hundred Cubic Feet = 7 Cubic Feet = 8
Unit K Factor	Counts Per Million Cubic Meters = 1 Counts Per Thousand Cubic Meters = 2 ² Counts Per Hundred Cubic Meters = 3 Counts Per Cubic Meter = 4 Counts Per Million Cubic Feet = 5 Counts Per Thousand Cubic Feet = 6 ³ Counts Per Hundred Cubic Feet = 7 Counts Per Cubic Foot = 8

Notes:

1. This table refers to attributes that are specific to gas meters.
2. This is the default if the units are Metric.
3. This is the default if the units are English.

Alarm Field Mappings

The Alarms Output type includes the following properties:

- A timestamp (displayed in Device, Host system, or UTC time format) that marks when the alarm occurred.

- The type of alarm.
- The state of the alarm.
- The value of the alarm.
- The data type of the alarm value.

Note: The type, state, and alarm value data type fields are output as numeric codes. *For more information, refer to the table below.*

Property	Mapping
Alarm Data Type	Output corresponds to the Win32 VARTYPE data type.*
Alarm State	Off = 1 On = 2 Hi = 3 Lo = 4
Alarm Type	None = 0 Differential Pressure = 1 Static Pressure = 2 Temperature = 3 Cutoff = 4 Backflow = 5 Battery = 6

*Values for this data type correspond to the VarEnum enumeration, which is documented by Microsoft/MSDN at [VarEnum Enumeration](#).

Mapping Database Attributes

Property Groups	<input type="checkbox"/> Identification	
General	Name	avg_pressure
	Browse Column Names	Browse...
	<input type="checkbox"/> Configuration	
	EFM Attribute	Average Pressure
	Attribute Description	Average pressure over a period.
	SQL Data Type	NUMERIC

Name: Specify the column name for the new EFM attribute. The default setting is ColumnName for new mappings. When the output's Table Selection option is set to Log to an existing table, if this property is changed to a name that matches an existing column name in the database, the **SQL Data Type** and **SQL Length** properties are populated with the type and length matching that column in the database.

Browse Column Names: When the mapping group's Table Selection option is set to Log to an existing table, clicking **Browse...** queries the selected table for available column names. Select a column name and click **OK** to set that selection as the new **Name**.

EFM Attribute: This drop-down menu lists all EFM attributes that are available for selection. An attribute can be mapped to more than one column and appear multiple times in the row of data. An attribute that is specified as <none> is displayed as an empty column. The default setting is <none>.

Important: Do not attempt to map an EFM attribute to any table column that contains a generated key (such as IDENTITY in MS SQL Server, AUTO_INCREMENT in MySQL, or SERIAL in PostgreSQL).

Attribute Description: Read-only property that shows a detailed description of the currently selected attribute.

SQL Data Type: Specify the EFM attribute's SQL data type. The default setting is SQL_UNKNOWN_TYPE.

SQL Length: Specify the length of the SQL data Type. It is only enabled when the SQL data Type is SQL_UNKNOWN_TYPE, CHAR, VARCHAR, LONGVARCHAR, WVARCHAR, or WLONGVARCHAR. The valid range is 1 to 255. The default setting is 0.

Flow-Cal Exporter (CFX)

The Flow-Cal Exporter exports gas EFM meter data to V5 or V8 CFX files and liquid EFM meter data to V7 or V8 CFX files. Whether a new file is created per poll or data appended to an existing file depends on the configuration of the file path and file name properties. The Flow-Cal Exporter keeps a cache per meter, allowing it to append data to an existing file. The cache is cleared when the client application deletes the exported file.

Note: Times written to the CFX file use the local device time zone.

Property Groups	Identification	
General	Name	FlowCal
	Description	
	Configuration	
	CFX File Version	Version 8
	History Type	Type 1
	History Interval	Hourly
	File Path	C:\EFM\Gas\
	Open Export Path	Open
	File Name	MeterName
	Enabled	Yes

Identification

Name: Specify a unique name. Each exporter must have a unique name that can neither start with an underscore nor contain a period. The maximum length is 255 characters. The default setting is FlowCal.

Description: Specify a short phrase to describe this in a manner that identifies the data or purpose in reports or downstream analysis (optional).

Configuration

CFX File Version: Specify the CFX file version to be used when exporting data. For gas data, the options are Version 5 and Version 8. For liquid data, the options are Version 7 and Version 8. The default setting for gas and liquid data is Version 8.

History Type: Specify the type of history records to be exported. Different options are presented based on the type of meter being configured. Descriptions of the options are as follows:

Gas Meter Types

CFX Version 5

- **Type 1:** This type contains basic flow information for meters without online chromatographs (such as gas volume percentages). This is the gas default.
- **Type 2:** This type contains analysis values used by NX19, Gross 1, and Gross 2 calculation methods (which are AGA and industry standard methods for calculating flow).
- **Type 3:** This type contains data for analysis values using AGA8-Detail calculations.
- **Type 4:** This type contains exotic analysis values that are not typically used or available.
 - **Note:** If Type 3 information is available from the device, but Type 1 is selected, the additional Type 3 data is filtered out.

CFX Version 8

- **Type 1:** This type contains basic flow information for meters without online chromatographs (such as gas volume percentages). This is the gas default.
- **Type 2:** This type contains periodic flow and analysis information.

Liquid Meter Types CFX Versions 7 + 8

- **Type 11:** This type includes basic liquid flow information without composition data.
- **Type 12:** This type includes detailed liquid flow information that is required for most standards. This is the liquid default.
- **Type 13:** This type includes detailed liquid flow and analysis information.

History Interval: Specify what data set is exported from the device. The Flow-Cal Exporter supports the export of one history data set from the device per CFX file. Options include hourly and daily. The default setting is hourly.

● **Note:** If a meter does not supply daily data but daily is selected, the meter's Daily History data is not included in the CFX file. The same situation applies to hourly data. To export both daily and hourly data, create two Flow-Cal exporters.

File Path: Specify where the .CFX file is placed. Although the directory can be a UNC network path or a local path, the server Runtime must have write access to it. Network drives are not supported when the server is in Service Mode. A directory is created if one does not already exist. The default setting is the user's My Documents directory. Click the (...) **Browse** icon to locate and select a new file location.

Open Export Path: Click the [Open](#) text to select the file path without wildcards.

File Name: Specify the name of the file. It does not require a .CFX extension, and supports wildcards. For more information, refer to "Wildcards" below. The default setting is |MeterName|.

Enabled: This option enables polling in the exporter. When disabled, the exporter does not poll meters for data for this exporter. The default setting is enabled.

● The **Defaults** button restores the settings to the default / pre-set values.

● **Note:** The Flow-Cal Exporter keeps a local cache of the EFM data that was collected for each meter, allowing new data to be appended as it is collected. The cache grows until the exported data is consumed.

● **See Also:** [Wildcards](#)

Flow-Cal Transaction Queue Exporter

The Flow-Cal Transaction Queue Exporter exports gas EFM meter data to a Flow-Cal Transaction Queue database using an ODBC DSN connection. Records are created for each EFM type: Config, Alarms, Events, and History. Records are generated using the EFM data set and inserted into the database for the Flow-Cal software to read. The exporter does not support polling/ exporting liquid EFM meter data.

Prerequisites

- 32-bit Oracle Instant Client with ODBC driver installed on the machine where the server is running
- User account with write permissions in the Flow-Cal Transaction Queue database
- Local 32-bit DSN configured to connect to the Flow-Cal Transaction Queue database

● **Note:** Database values for the WRITE_TIMESTAMP and WRITE_DATE columns use the time zone set on the machine running the server; all other date and timestamp values use the time zone set on the EFM device.

Property Groups	[-] Identification	
General	Name	GasFlowCalTXQ
	Description	
	[-] Configuration	
	Enabled	Yes
	History Interval	Hourly
	[-] Data Source	
	Data Source	
	Username	
	Password	*****

Name: Specify the name of the Flow-Cal Transaction Queue Exporter being configured. When a new Flow-Cal Transaction Queue Exporter is created, this property generates a name that is unique across all other exporters within the poll group. The default setting is "GasFlowCalTXQ". Each additional exporter created has an automatically incremented integer attached to the end of the default name.

Description: Specify a short phrase to describe this in a manner that identifies the data or purpose in reports or downstream analysis (optional).

Enabled: This option allows exporting in the Flow-Cal Transaction Queue Exporter. When disabled, the exporter does not send data to the Flow-Cal Transaction Queue database. The default setting is enabled.

History Interval: Specify the type of history data to be output from the meter. Each Flow-Cal Transaction Queue Exporter can be set to Hourly or Daily. To export both Hourly and Daily historical records, configure two exporters with one set to Hourly and the other set to Daily. Both exporters may export to the same DSN.

Data Source: Specify the existing database connection object (a prerequisite for the Flow-Cal Transaction Queue Exporter). Contact a systems Administrator for the correct DSN selection and configuration settings for connecting to the Flow-Cal Transaction Queue database. Choose the (...) **Browse** button to locate a database or **Configure DSN...** button, which launches the Windows 32-bit ODBC Data Source Administrator to configure a DSN.

● **Note:** If changes are made to the DSN configuration in the Microsoft ODBC Data Source Administrator, the exporter must be disabled and re-enabled to use the new DSN configuration. Starting and stopping the server also applies the new DSN configuration to the exporter.

User Name: Specify the account to be used for the DSN connection.

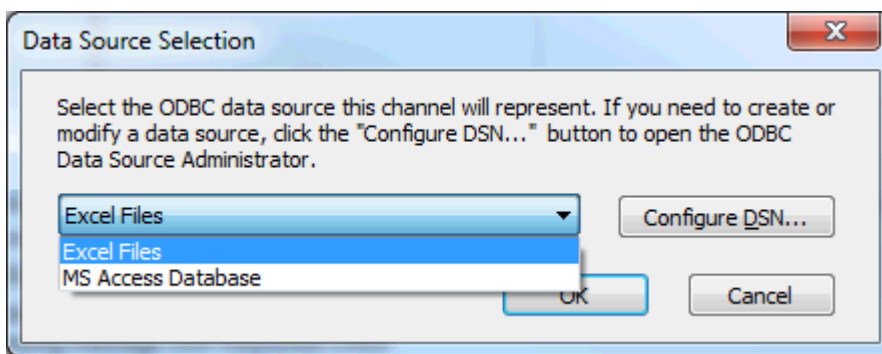
Password: Specify a password for the specified user account; only necessary if the data source requires it.

• **See Also:** [Configure DSN](#)

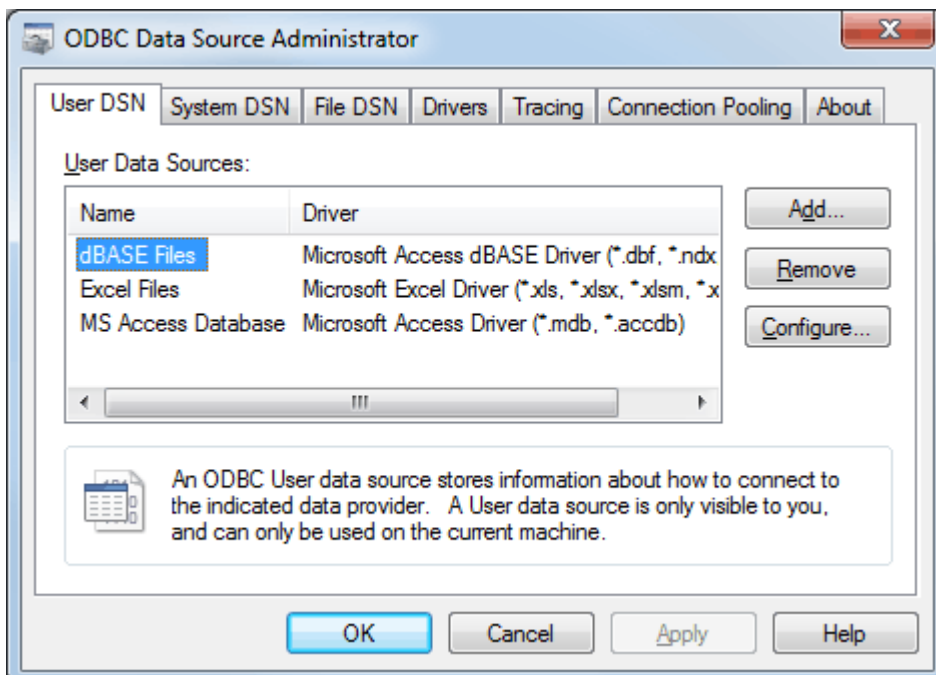
Configure DSN

The Flow-Cal Transaction Queue Exporter supports only an Oracle database DSN. The Database Exporter supports MS SQL Server, MySQL, PostgreSQL, and MS Access DSNS.

1. To start, click the Browse button associated with the Data Source property to launch the Data Source Selection dialog.
2. Select the data source you wish to connect to. If you have not yet configured the data source. Click the **Configure DSN...** button to launch the Microsoft® ODBC Data Source Administrator dialog.



3. In the Microsoft® ODBC Data Source Administrator dialog, select the **User DSN** or **System DSN** tab depending on the type of DSN that is needed. Next, click **Add...**
 - *For more details, see the ODBC Data Source Administrator help.*



4. In **Create New Data Source**, locate and select the driver for the specific database. Then, click **Finish**.
5. Continue through the DSN Wizard.

● **Note:** The dialogs and fields presented in the DSN Wizard depends on the database connected and the DSN configured. If presented with a **Test** button, select it to verify that the DSN setup is functional.

PGAS Exporter

The PGAS Exporter exports four types of EFM record outputs: Alarms, Events, Analytics, and Volume. Each output contains a unique PGAS extension. The Analytics and Volume outputs may be enabled on a per-type basis.

Property Groups		
General	[-] Identification	
	Name	GasPGAS
	Description	
	[-] Configuration	
	Record Time Format	Device Time
	File Path	
	Open Export Path	Open
	File Name	{MeterName}
	Enabled	Yes
	[-] Gas Quality	
	Enable Analytics (.ANA)	Yes
	History Interval	Hourly
	[-] Gas Volume	
	Enable Volume (.VOL)	Yes
	History Interval	Hourly

Identification

Name: Specify the name of the PGAS Exporter that is being configured. When a new PGAS Exporter is created, this property generates a name that is unique across all other exporters. The default setting is "GasPGAS". Each additional exporter that is created has an automatically incremented integer attached to the end of the default name.

● **Note:** The PGAS Exporter supports file name wildcards.

Description: Specify a short phrase to describe this in a manner that identifies the data or purpose in reports or downstream analysis (optional).

Configuration

Record Time Format: Specify the format of the PGAS records. Options include Device Time, UTC, and Local System Time. The default setting is Device Time. Descriptions of the options are as follows:

- **Device Time:** When selected, the PGAS time records are the default time of the device.
- **UTC:** When selected, the PGAS time records are in Coordinated Universal Time (UTC).
- **Local System Time:** When selected, the PGAS time records are the time of the local system.

File Path: Specify the location to be used to export data for the PGAS Exporter. A default file path is provided for new exporter configurations. Click (...) **Browse** to locate and select a new file location. Although a path is generated by default (using wildcards for the Poll group name, exporter name, record year, and record month); users can browse to and select a different location.

Open Export Path: Click the [Open](#) link to locate the file path without wildcards.

File Name: Specify the file name. For more information, refer to "Wildcards" below. The default setting is |MeterName|.

● **Note:** When specifying a file name, users are not required to enter a file extension. An extension that is provided but does not match the type required by the PGAS Exporter is removed, and the PGAS extension is added. When no extension is provided, the PGAS extension is appended.

Enabled: Select **Yes** to enable polling in the PGAS Exporter. When disabled, the PGAS Exporter does not poll. The default setting is Yes (enabled).

Gas Quality

Enable Analytics (.ANA): Select Yes to enable export of PGAS Analytics data. If enabled, specify how often the data is exported.

History Interval: Specify how often analytic data is exported. Options include hourly, daily, and both. The default setting is hourly. Device configuration controls the EFM data in a record based on the enabled option(s).

Gas Volume

Enable Volume (.VOL): Select Yes to enable export of PGAS Volume data. If enabled, specify how often the data is exported.

History Interval: Specify how often volume data is exported. Options include hourly, daily, and both. The default setting is hourly. Device configuration controls the EFM data in a record based on the enabled option(s).

● **Note:** The value that is configured for each output type is stored in the user application profile. Future EFM PGAS Exporter configurations is pre-populated with this information.

● The **Defaults** button restores the settings to the default / pre-set values.

● See Also: [Wildcards](#)

Mapping PGAS Exporter Attributes

For more information on a specific mapping, select a link from the list below.

[Alarms \(.ARM\) Mappings](#)

[Gas Quality \(.ANA\) Mappings](#)

[Event \(.EVT\) Mappings](#)

[Gas Volume \(.VOL\) Mappings](#)

● **Note:** There are several PGAS attributes for which there is no equivalent EFM Exporter configuration mapping.

Alarms (.ARM) Mappings

EFM Exporter Mapping	PGAS Attribute
Meter ID	METER_ID
When	ALARM_DATE
N/A	PRIORITY_LEVEL
{type+state+data_type}	ALARM_TEXT
N/A	TRIGGER_VALUE
N/A	ALARM_VALUE

Gas Quality (.ANA) Mappings

EFM Exporter Mapping	PGAS Attribute
Meter ID	ANALYSIS_ID
Sample Time	SAMPLE_DATE
N/A	EFFECTIVE_DATE
N/A	SAMPLE_TYPE
N/A	SAMPLE_ID
<element%>	METHANE_MOL
<element%>	ETHANE_MOL
<element%>	PROPANE_MOL
<element%>	IBUTANE_MOL
<element%>	NBUTANE_MOL
<element%>	IPENTANE_MOL
<element%>	NPENTANE_MOL
<element%>	NHEXANE_MOL
<element%>	NHEPTANE_MOL
<element%>	NOCTANE_MOL
<element%>	NNONANE_MOL
<element%>	NDECANE_MOL
<element%>	N2_MOL
<element%>	CO2_MOL
<element%>	H2O_MOL
<element%>	H2S_MOL
<element%>	H2_MOL
<element%>	CO_MOL
<element%>	O2_MOL
<element%>	HE_MOL
<element%>	AR_MOL
Specific Gravity	GRAVITY

EFM Exporter Mapping	PGAS Attribute
Pressure Base	SAMPLE_PRESSURE_BASE
N/A	DRY_ENERGY_FACTOR
N/A	SAT_ENERGY_FACTOR
BTU	AS_DELIVERED_ENERGY_FACTOR
Average Pressure	SAMPLE_PRESSURE
Average Temperature	SAMPLE_TEMPERATURE
N/A	GENERIC1
N/A	GENERIC2
N/A	GENERIC3
N/A	GENERIC4
N/A	GENERIC5
N/A	GENERIC6
N/A	GENERIC7
N/A	GENERIC8
N/A	LAB_CODE
N/A	ANALYZED_DATE
N/A	ANALYZER_OPERATOR
N/A	GENERIC9
N/A	GENERIC10
N/A	GENERIC11
N/A	GENERIC12
N/A	GENERIC13
N/A	GENERIC14
N/A	GENERIC15
N/A	GENERIC16
N/A	GENERIC17

Note: The PGAS Exporter attempts to use live gas Quality Control (GC) data for the MOL % gas quality fields. If live data is not available, the EFM Exporter uses the static GC data present in the configuration.

Event (.EVT) Mappings

The PGAS Exporter follows certain conventions to successfully convert configuration events from the EFM Exporter. *For more information, refer to the table below.*

EFM Exporter Mapping	PGAS Attribute
Meter ID	METER_ID
When	EVENT_DATE
*	METER_CALC_COLUMN_NAME
New Value**	NEW_VALUE
Old Value**	OLD_VALUE

EFM Exporter Mapping	PGAS Attribute
*	PRIORITY_LEVEL*
Attribute Description**	DESCRIPTION
Event Description with values**	COMMENT

*For more information, refer to the table below.

**This column is populated as appropriate information is available.

Mapping .EVT "METER_CALC_COLUMN_NAME" to the PGAS Key Events

This column denotes a key event, which is a special type of event that PGAS is capable of natively understanding.

EFM Exporter Mapping	PGAS Attribute
Orifice Plate Size	ORIFICE_SIZE
Pipe Diameter	TUBE_DIAMETER
Temperature Base	TEMP_BASE
Pressure Base	CONTRACT_PRES_BASE
N/A	FPV_ENABLE_PRES
Atmospheric Pressure	SITE_ATMOS_PRES
Factor FR	NORMALIZE_FR_FACTOR
Factor FY	NORMALIZE_Y_FACTOR
Plate Material	PLATE_MATERIAL
Pipe Material	TUBE_MATERIAL
Meter Tap	DIFF_TAP_TYPE
Static Pressure Tap	STAT_TAP_LOCA
DP Calibration Range High	DIFF_HI_RANGE
SP Calibration High	STATIC_HI_RANGE
Temperature Calibration Range Low	TEMP_LO_RANGE
Temperature Calibration Range High	TEMP_HI_RANGE
N/A	ORIFICE_SERIAL_NUM
N/A	IN_SITU
N/A	STATION_STATUS
N/A	METER_STATUS
N/A	STATION_NAME
Meter ID	METER_NAME
N/A	STATION_PURPOSE
N/A	LOC_ADDRESS1
N/A	LOC_ADDRESS2
N/A	LOC_CITY
N/A	LOC_STATE
N/A	LOC_COUNTRY
N/A	LOC_ZIPCODE

EFM Exporter Mapping	PGAS Attribute
N/A	LOC_DISTRICT
N/A	LOC_ELEVATION
N/A	LOC_LATITUDE
N/A	LOC_LONGITUDE
N/A	LOC_MAPCODE
N/A	DISCONNECT_DATE
N/A	INITIAL_FLOW_DATE
N/A	TEST_GROUP_BE
N/A	METER_SERIAL_NUM
N/A	METER_MAKE
N/A	METER_MODEL
Meter Factor	METER_FACTOR
N/A	FIXED_FACTOR_FLAG
N/A	COMPENSATING_INDEX_FLAG
N/A	INDEX_NUMBER_OF_DIALS
N/A	METER_INSTALLATION_DATE
N/A	METER_PURCHASE_DATE
N/A	INDEX_INSTRUMENT_UNIT_OF_DIALS
N/A	EFM_SERIAL_NUMBER
N/A	EFM_MAKE
N/A	EFM_MODEL
N/A	INSTRUMENT_PURCHASE_DATE
N/A	INSTRUMENT_INSTALLATION_DATE

Gas Volume (.VOL) Mappings

EFM Exporter Mapping	PGAS Attribute
Meter ID	METER_ID
N/A	PRODUCTION_DATE_START
When	PRODUCTION_DATE_END
Flow Time	FLOW_TIME_MINUTES
Total Volume	EFM_VOLUME
Total Energy	EFM_ENERGY
Average Extension	FLOW_EXTN
Average Different Pressure	DIFF_PRESS
Average Pressure	STAT_PRESS
Average Temperature	FLOW_TEMP
Raw Volume	ROTARY_CURR_UNCO_VOL
N/A	ROTARY_PREV_UNCO_VOL
Pulses	ROTARY_AVG_FREQ

EFM Exporter Mapping	PGAS Attribute
C Prime	C_PRIME
N/A	FA
N/A	FB
N/A	FG
N/A	FPB
N/A	FPM
N/A	FPV
N/A	FR
N/A	FTB
N/A	FTF
N/A	Y
N/A	F_MASS
N/A	C_D_FT
N/A	RHO_T_P
N/A	RHO_B_GAS
Average N2	EFM_N2_MOL
Average CO2	EFM_CO2_MOL
Average Specific Gravity	EFM_GRAVITY
Average BTU	EFM_ENERGY_FACTOR
N/A	DP_MAN_OVR
N/A	DP_LO_ALM
N/A	DP_HI_ALM
N/A	DP_TX_FAIL
N/A	SP_MAN_OVER
N/A	SP_LO_ALM
N/A	SP_HI_ALM
N/A	SP_TX_FAIL
N/A	TEMP_MAN_OVR
N/A	TEMP_LO_ALM
N/A	TEMP_HI_ALM
N/A	TEMP_TX_FAIL
N/A	VOL_MAN_OVR
N/A	VOL_LO_ALM
N/A	VOL_HI_ALM
N/A	VOL_TX_FAIL
N/A	INTEG_DIFF_PRESS
N/A	INTEG_STAT_PRESS
N/A	COMMENT
Pressure Base	EFM_PRESSURE_BASE

EFM Exporter Mapping	PGAS Attribute
N/A	BACK FLOW
N/A	LITHIUM_ALARM_FLAG
N/A	BATTERY_VOLTAGE
Average C1	AVG_METHANE
Average C2	AVG_ETHANE
Average C3	AVG_PROPANE
Average H2O	AVG_H2O
Average H2S	AVG_H2S
Average H2	AVG_H2
Average CO	AVG_CO
Average O2	AVG_O2
Average ISOC4	AVG_IBUTANE
Average NC4	AVG_NBUTANE
Average ISOC5	AVG_IPENTANE
Average NC5	AVG_NPENTANE
Average C6	AVG_NHEXANE
Average C7	AVG_NHEPTANE
Average C8	AVG_NOCTANE
Average C9	AVG_NNONANE
Average C10	AVG_NDECANE
Average H2	AVG_HELIUM
Average AR	AVG_ARGON

Wildcards

The file path and file name support both record and server wildcards. Record wildcards are replaced with data from the records. Server wildcards are replaced with data from the server. For more information, refer to the tables below.

Record Wildcards

Wildcard	Description
RecordYear	Replaced by the record year (yyyy)
RecordMonth	Replaced by the record month (mm)
RecordDay	Replaced by the record day (dd)
RecordHour	Replaced by the record hour (hh)
RecordMinute	Replaced by the record minute (mm)
ContractYear	Replaced by the record year adjusted by the meter's contract hour
ContractMonth	Replaced by the record month adjusted by the meter's contract hour
ContractDay	Replaced by the record day adjusted by the meter's contract hour
ContractHour	Replaced by the record hour adjusted by the meter's contract hour

● **Notes:**

- The meter's contract hour is factored into the record wildcards, allowing file organization per contract hour. For example, a contract hour of 9:00 that is used with the file "C:\RecordDay\myfile.xxx" organizes files by day (where xxx file extensions are .ana for PGA, .cfx for FlowCal, and .csv for CSV). Each day contains data from 9:00 AM to 9:00 AM. Furthermore, the meter's hourly record span (leading / trailing or data preceding / following) controls how the contract hour is interpreted. If leading, the first record is from 9:00 to 9:59. If trailing, the first record is from 8:01 to 9:00.
- For the contract wildcards, the hour is adjusted by the meter's contract hour, such that the first hour of the contract day, is named with hour 00:00 and the last hour of the contract day is named with the hour 23:00. For example, if the contract hour of the meter is set to 9:00 AM, the 9:00 AM record is named 00:00, the 10 AM record is named 1:00, and so on, to the 8:00 AM record of the next day; which is named 23:00. These wildcards assure that all records within the same contract day are named with the same day.

Server Wildcards

Wildcard	Description
Meter	The meter component of the full meter name, as displayed in the Detail View
MeterID	The meter identification associated with the physical meter If the meter ID is not available or unmapped in the driver, the wildcard is replaced by <Channel>_<Device>_<Meter>_NoMeterID.
Channel	The channel component of the full meter name, as displayed in the Detail View
Device	The device component of the full meter name, as displayed in the Detail View
MeterName	The full name of the meter, as displayed in the Detail View
SQ	A sequence number that increments on each poll
PollGroupName	The name of the poll group
ExporterName	The name of the exporter
SystemYear	Replaced by the local system year
SystemMonth	Replaced by the local system month
SystemDay	Replaced by the local system day
SystemHour	Replaced by the local system hour
SystemMinute	Replaced by the local system minute

Caution: When using wildcards, ensure the wildcard constructed paths and file names are specific to the individual meters being polled; wildcard replacement values can be common to many meters, and generic paths could result in files being overwritten.

Wildcard Examples

Example1 : |MeterName|

Assume uploading records where the output is Meter1.cfx. All records are logged into same file.

Example2 : |RecordMonth|_|RecordYear|_|MeterName|

Assume uploading 20 records for Meter1. Within that 20 records, 10 of those are from December 2019 and remaining those are in January 2020.

The output should be:

|RecordMonth|_|RecordYear|_|MeterName| : 12_2019_Meter1.cfx and 01_2020_Meter1.cfx.

Example3 : |RecordMonth|_|RecordDay|_|RecordHour|_|MeterName|
 The wild card format produces 24 files each file containing 3.

For example, one of the files would be *03_20_10_Meter1.cfx* and contain records with following timestamps:
 3/20 @ 10a.m.
 3/21 @ 10a.m.
 3/22 @ 10a.m.

Attribute Enumerations

Data Type Enumerations

EFM Event and Alarm records contain an enumerated data type attribute. The following table documents the alarm and event enumeration supported by the CSV and database exporters.

data_type	Value
None	0
Short	2
Long	3
Real	4
Double	5
String	8
Boolean	11
Char	16
Byte	17
Word	18
DWord	19

Configuration Attribute Enumerations

There are several EFM configuration properties that the EFM exporter represents as enumerated values. The following tables document the configuration enumerations supported by the gas CSV and database exporters.

meter_type	Value
Orifice	1
Positive Displacement	2
Turbine	3
Ultrasonic	4
Liquids	5
Vcone	6
Coriolis	7
Line Pack	8

live_analysis	Value
TRUE	1
FALSE	0

live_btu	Value
TRUE	1
FALSE	0

live_gravity	Value
TRUE	1
FALSE	0

live_temp	Value
TRUE	1
FALSE	0

calculation_method	Value
Aga3 1985	1
Aga3 1992	2
Aga5	3
Aga7	4
Vcone4	5
Aga11	6
Line Pack	7

meter_tap	Value
Flange	1
Pipe	2

static_pressure_tap	Value
Up	1
Down	2

unit	Value
English	1
Metric	2

hourly_record_span	Value
Leading	1
Trailing	2

btu_base	Value
Wet	1

btu_base	Value
Dry	2
As Delivered	3

factor_fa	Value
TRUE	1
FALSE	0

factor_fb	Value
TRUE	1
FALSE	0

factor_fg	Value
TRUE	1
FALSE	0

factor_fpv	Value
TRUE	1
FALSE	0

factor_fr	Value
TRUE	1
FALSE	0

factor_ft	Value
TRUE	1
FALSE	0

factor_fvw	Value
TRUE	1
FALSE	0

pipe_material	Value
Stainless Steel	1
Carbon Steel	2
Monel	3

plate_material	Value
Stainless Steel	1
Carbon Steel	2

plate_material	Value
Monel	3

fpv_method	Value
Nx19	1
Aga8 Detail	2
Aga8 Gross1	3
Aga8 Gross2	4

static_pressure_type	Value
Gauge	1
Absolute	2

unit_volume	Value
Million Cubic Meters	1
Thousand Cubic Meters	2
Hundred Cubic Meters	3
Cubic Meters	4
Million Cubic Feet	5
Thousand Cubic Feet	6
Hundred Cubic Feet	7
Cubic Feet	8

unit_k_factor	Value
Counts Per Million Cubic Meters	1
Counts Per Thousand Cubic Meters	2
Counts Per Hundred Cubic Meters	3
Counts Per Cubic Meter	4
Counts Per Million Cubic Feet	5
Counts Per Thousand Cubic Feet	6
Counts Per Hundred Cubic Feet	7
Counts Per Cubic Foot	8

Event Attribute Enumerations

The EFM exporter represents configuration change events by associating an event record with a configuration attribute. The following table documents the attribute enumerations supported by the CSV and database exporters.

● **Note:** If the attribute field is empty, then the event record contains a "new_value" string that describes the user event. These event types cannot be associated with a configuration attribute by an EFM driver.

Attribute	Value
Meter ID	0
Meter Type	1
Pressure Base	2
Temp Base	3
Live Analysis	4
Live BTU	5
Live Gravity	6
Live Temp	7
Calculation Method	8
Pipe Diameter	9
Pipe Ref Temp	10
Meter Tap	11
Static Pressure Tap	12
Unit	13
Orifice Plate Size	14
Orifice Ref Temp	15
DP Low Flow Cutoff	16
Atmospheric Pressure	17
BTU	18
Specific Gravity	19
Viscosity	20
CO2	21
N2	22
C1	23
C2	24
C3	25
ISOC4	26
NC4	27
ISOC5	28
C5	29
NEOC5	30
C6	31
C7	32
C8	33
C9	34
C10	35
O2	36
H2O	37
H2S	38

Attribute	Value
HE	39
H2	40
CO	41
AR	42
Hourly Record Span	43
Contract Hour	44
Contract Day	45
Sample Time	46
Time Zone	47
DST	48
BTU Base	49
Factor FA	50
Factor FB	51
Factor FG	52
Factor FPV	53
Factor FR	54
Factor FT	55
Factor FWV	56
Factor FY	57
Fixed Factor	58
Pipe Material	59
Plate Material	60
FPV Method	61
Static Pressure Type	62
DP Calib Range High	63
DP Transd Range High	64
SP Calib High	65
SP Calib Low	66
SP Transd Range High	67
Temp Calib Range High	68
Temp Calib Range Low	69
Temp Transd Range High	70
Temp Transd Range Low	71
DP Low Alarm	72
DP Backflow Alarm	73
DP High Alarm	74
SP Low Alarm	75
SP High Alarm	76
Temp Low Alarm	77

Attribute	Value
Temp High Alarm	78
K Factor	79
Meter Factor	80
Accumulated Volume	81
Unit Volume	82
Unit K Factor	83
Specific Heats	85

Alarm Attribute Enumerations

There are several EFM alarm properties that the EFM Exporter represents as enumerated values. The following tables document the alarm enumerations supported by the CSV and database exporters.

Type	Value
Diff Pressure	1
Static Pressure	2
Temperature	3
Cutoff	4
Backflow	5
Battery	6

State	Value
Off	1
On	2
Hi	3
Lo	4

CSV Import / Export

The EFM Exporter supports the import and export of data in a Comma-Separated Variable (CSV) file. CSV import and export supports the efficient configuration of large numbers of poll groups, meters, and exporters. CSV functions are only available at the poll group object level. Properties that are not defined in the CSV file are assigned appropriate default values. For more information on a specific aspect of CSV Import / Export, select a link from the list below.

[Creating a Template](#)

[Exporting Poll Group Objects](#)

[Importing a CSV File into the Server](#)

[Using Other Characters as the Delimiter](#)

Creating a Template

The easiest way to create an import CSV file is to create a template. For more information, refer to the instructions below.

1. To start, create a poll Group. Specify the desired configuration and polling settings, and then click **OK**.
2. Right-click on **Meters** and select **New Meter**.
3. In **Meter**, click the browse icon to locate and select a meter. Then, click **Apply | OK**.
4. Right-click on **Exporters** and create a new exporter of choice. Once finished, click **OK**.
5. Right-click on **PollGroup** and select **Export CSV**. Save it as a CSV file.
6. Use this template in a spreadsheet application that supports CSV files, and then modify the file as desired.

● **Note:** Microsoft Excel is an excellent tool for editing large groups of tags outside the server. Once a template CSV file has been exported, it can be loaded directly into Excel for editing.

Exporting Poll Group Objects

Exporting a poll Group generates a CSV text file that contains one section for meters and multiple sections for each exporter type. Each section contains a heading record followed by a record for each item defined under the poll Group. Column names must match those listed; however, columns may be in any order.

Meter Fields

The required columns are listed in **bold**.

Column Name	Value
Alarms	This is true if Alarms should be requested for the meter. The default setting is true.
Batch	This is true if Batch History should be collected for the meter. The default setting is true. This only applies to liquid meters.
Enabled	This is true if the meter is enabled, but false otherwise. No data is gathered for disabled meters. The default setting is true.
Events	This is true if Events should be requested for the meter. The default setting is true.
History Daily	This is true if Daily History should be collected for the meter. The default setting is true.
History Hourly	This is true if Hourly History should be collected for the meter. The default setting is true.
Meter	This is the address for the meter inside the server. It includes the channel and device name, as well as the meter name. For example, "Channel1.Device1.Meter1".
Name	This is the meter's internal server name. It should start with "Meters" and is usually the meter address with all periods replaced with underscores. If left blank, the name is automatically generated based on the meter column.
Record Type	"Meter"

Flow-Cal (CFX) Exporter Fields

The required columns are listed in **bold**.

Column Name	Value
Enabled	This is the enabled state of the exporter. When disabled, the exporter does not generate CFX files. The default setting is true.
File Name	This is the name for CFX files. Wildcards can be used. The default setting is MeterName .

Column Name	Value
History Interval	This is the type of history data to export. Valid options include hourly and daily. The default setting is hourly.
History Type	This is the type of history record to export. Options depend on the type of meter being configured as well as the CFX version. Valid options include the following: Gas Meter Types <ul style="list-style-type: none"> • CFX File Version 5: Type 1, Type 2, Type 3, and Type 4 • CFX File Version 8: Type 1 and Type 2 Liquid Meter Types <ul style="list-style-type: none"> • CFX File Version 7: Type 11, Type 12, and Type 13 • CFX File Version 8: Type 11, Type 12, and Type 13 The default setting for gas data is Type 1. The default setting for liquid data is Type 12.
CFX File Version	This is the CFX File version to be used when exporting data. Options depend on the type of meter being configured. Valid options include the following: <ul style="list-style-type: none"> • Gas Meter Types: Version 5 or Version 8 • Liquid Meter Types: Version 7 or Version 8 The default setting for gas and liquid data is Version 8.
Name	This is the fully qualified name of the exporter. If the exporter name is not set by the user, the default setting is "Gas Meters.Exporters.GasFlowCal" for gas and "Liquid Meters.Exporters.LiquidFlowCal" for liquid.
Record Type	"FlowCal"
Root Directory	This is the Root Directory or file path for CFX files. Wildcards can be used. The default setting is the user's documents directory.

Flow-Cal Transaction Queue Exporter Fields

The required columns are listed in **bold**.

Column Name	Value
Name	This is the fully qualified name of the exporter. If the exporter name is not set by the user, the default setting is "Gas Meters.Exporters.GasFlowCalTXQ."
DSN	This is the connection for the database (data source name).
Enabled	This is the enabled state of the exporter. When disabled (false), the exporter does not export to the database. The default setting is true.
History Interval	This is the type of history data to export. Valid options include hourly and daily. The default setting is hourly.
Password	This is the encrypted password for the DSN; only necessary if the data source requires it.
Record Type	"FlowCalTXQ"
User Name	This is the user name for the DSN; only necessary if the data source requires it.

CSV Exporter Fields

The required columns are listed in **bold**.

Column Name	Value
Alarms EFM Mapping	This is the EFM Mapping for the CSV exporter's Alarms Output. It is read only and cannot be edited.
Alarms Enabled	This is the enabled state of the Alarms Output. When disabled, the output does not poll. The default setting is true.
Alarms Filename	This is the name of the Alarm Output record. The default setting is "Alarms.csv".
Alarms Root Directory	This is the Alarms Output's file path.
Character Encoding	This affects the text that is generated on one computer or system and consumed on another computer or system. Valid options include UTF-8 and ANSI. The default setting is UTF-8.
Configuration EFM Mapping	This is the EFM Mapping for the CSV exporter's Config Output. It is read only and cannot be edited.
Configuration Enabled	This is the enabled state of the Config Output. When disabled, the output does not poll. The default setting is true.
Configuration File-name	This is the name of the Config Output record. The default setting is "Config.csv".
Configuration Root Directory	This is the Config Output's file path.
Enabled	This is the enabled state of the exporter. When disabled, the exporter does not generate CSV files. The default setting is true.
Events EFM Mapping	This is the EFM Mapping for the CSV exporter's Events Output. It is read only and cannot be edited.
Events Enabled	This is the enabled state of the Events Output. When disabled, the output does not poll. The default setting is true.
Events Filename	This is the name of the Events Output record. The default setting is "Events.csv".
Events Root Directory	This is the Events Output's file path.
Delimiter	This is the separator character used in writing. Valid options include comma and semi-colon. The default setting is comma.
History Daily Enabled	This is the enabled state of the Daily History Output. When disabled, the output does not poll. The default setting is true.
History Daily File-name	This is the name of the Daily History Output record. The default setting is "DailyHistory.csv".
History Daily Root Directory	This is the Daily History Output's file path.
History EFM Mapping	This is the EFM Mapping for the CSV exporter's History Output. It is read only and cannot be edited.
History Hourly Enabled	This is the enabled state of the Hourly History Output. When disabled, the output does not poll. The default setting is true.
History Hourly File-name	This is the name of the Hourly History Output record. The default setting is "HourlyHistory.csv".
History Hourly Root Directory	This is the Hourly History Output's file path.
Batch EFM Map-	This is the EFM Mapping for the CSV Exporter's Batch Output. It is read only and

Column Name	Value
ping	cannot be edited. Only supported for liquid CSV data.
Batch Enabled	This is the enabled state of the batch Output. When disabled, the output does not poll. The default setting is true (enabled). Only supported for liquid CSV data.
Batch File Name	This is the name of the batch Output record for liquid CSV data. The default setting is "Batch.csv".
Batch Root Directory	This is the liquid CSV batch Output file path.
Liquid Product EFM Mapping	This is the EFM Mapping for the CSV exporter Liquid Product Output. It is read only and cannot be edited. Only supported for liquid CSV data.
Liquid Product Enabled	This is the enabled state of the Liquid Product Output. When disabled, the output does not poll. The default setting is true (enabled). Only supported for liquid CSV data.
Liquid Product File Name	This is the name of the Liquid Product Output record. The default setting is "LiquidProduct.csv". Only supported for liquid CSV data.
Liquid Product Root Directory	This is the Liquid Product Output CSV file path.
Name	This is the fully qualified name of the exporter. If the exporter name is not set by the user, the default setting is "Gas Meters.Exporters.GasCSV" for a gas exporter and "Liquid Meters.Exporters.LiquidCSV" for a liquid exporter.
Record Type	"CSV"
Time Basis	This is the format of the EFM time records. Valid options include the following: Device Time UTC Local System Time The default setting is Device Time.
Time Format	This modifies the output file's time Format. Wildcards include MM, DD, YYYY, hh, mm, ss, and AMPM. The default setting is MM-DD-YYYY hh:mm:ss.

PGAS Exporter Fields

The required columns are listed in **bold**.

Column Name	Value
Enabled	This is the enabled state of the exporter. When disabled, the exporter does not generate PGAS files. The default setting is true.
Filename	This is the name for PGAS files. Wildcards can be used. The default setting is MeterName .
Gas Quality (.ANA) Enabled	This enables the export of PGAS Analytics data.
Gas Quality (.ANA) History Type	This is how often the gas Quality data is exported. Valid options include: Hourly Daily Both The default setting is hourly.
Gas Volume (.VOL) Enabled	This enables the export of PGAS Volume data.

Column Name	Value
Gas Volume (.VOL) History Type	This is how often the gas Volume data is exported. Valid options include: Hourly Daily Both The default setting is hourly.
Name	This is the fully qualified name of the exporter. If the exporter name is not set by the user, the default setting is "Gas Meters.Exporters.GasPGAS."
Record Type	"PGAS"
Root Directory	This is the Root Directory or file path for PGAS files. Wildcards can be used. The default setting is the user's documents directory.
Time Basis	This is the format of the PGAS records. Valid options include the following: Device Time UTC Local System Time The default setting is Device Time.

Database Exporter Fields

The required columns are listed in **bold**.

Column Name	Value
Alarms EFM Mapping	This is the EFM Mapping for the database exporter's Alarms Output. It is read only and cannot be edited.
Alarms Enabled	This is the enabled state of the Alarms Output. When disabled, the output does not poll. The default setting is true.
Alarms Table Generation Type	This is the Alarms Output's table type. Valid options include Log to an existing table and Create a new table once and always attempt to append to this table. The default setting is Create a new table once and always attempt to append to this table.
Alarms Table Name	This is the table name of the Alarms Output. The default setting is "efmgasalarms" for gas and "efmliquidalarms" for liquid.
Configuration EFM Mapping	This is the EFM Mapping for the database exporter's Config Output. It is read only and cannot be edited.
Configuration Enabled	This is the enabled state of the Config Output. When disabled, the output does not poll. The default setting is true.
Configuration Table Generation Type	This is the Config Output's table type. Valid options include Log to an existing table and Create a new table once and always attempt to append to this table. The default setting is Create a new table once and always attempt to append to this table.
Configuration Table Name	This is the table name of the Config Output. The default setting is "efmgasconfig" for gas and "efmliquidconfig" for liquid.
Daily History EFM Mapping	This is the EFM Mapping for the database exporter's Daily History Output. It is read only and cannot be edited.
Daily History Enabled	This is the enabled state of the Daily History Output. When disabled, the output does not poll. The default setting is true.
Daily History Table Generation Type	This is the Daily History Output's table type. Valid options include Log to an existing table and Create a new table once and always attempt to append to this table. The

Column Name	Value
	default setting is Create a new table once and always attempt to append to this table.
Daily History Table Name	This is the table name of the Daily History Output. The default setting is "efm-gasdailyhistory" for gas and "efmliquiddailyhistory" for liquid.
Description	This is the description of the database exporter.
DSN	This is the DSN for the database.
Enabled	This is the enabled state of the exporter. When disabled, the exporter does not generate database files. The default setting is true.
Events EFM Mapping	This is the EFM Mapping for the database exporter's Events Output. It is read only and cannot be edited.
Events Enabled	This is the enabled state of the Events Output. When disabled, the output does not poll. The default setting is true.
Events Table Generation Type	This is the Events Output's table type. Valid options include Log to an existing table and Create a new table once and always attempt to append to this table. The default setting is Create a new table once and always attempt to append to this table.
Events Table Name	This is the table name of the Events Output. The default setting is "efmgasevents" for gas and "efmliquidevents" for liquid.
Hourly History EFM Mapping	This is the EFM Mapping for the database exporter's Hourly History Output. It is read only and cannot be edited.
Hourly History Enabled	This is the enabled state of the Hourly History Output. When disabled, the output does not poll. The default setting is true.
Hourly History Table Generation Type	This is the Hourly History Output's table type. Valid options include Log to an existing table and Create a new table once and always attempt to append to this table. The default setting is Create a new table once and always attempt to append to this table.
Hourly History Table Name	This is the table name of the Hourly History Output. The default setting is "efm-gashourlyhistory" for gas and "efmliquidhourlyhistory" for liquid.
Batch EFM Mapping	This is the EFM Mapping for the database exporter's Batch Output. It is read only and cannot be edited. Only supported for liquid data.
Batch Enabled	This is the enabled state of the Batch Output. When disabled, the output does not poll. The default setting is true (enabled). Only supported for liquid data.
Batch Table Generation Type	This is the Batch Output table type. Valid options include Log to an existing table and Create a new table once and always attempt to append to this table (default). Only supported for liquid data.
Batch Table Name	This is the table name of the Batch Output. The default setting is "efmliquidBatch". Only supported for liquid data.
Liquid Product EFM Mapping	This is the EFM Mapping for the database exporter Liquid Product Output. It is read only and cannot be edited. Only supported for liquid data.
Liquid Product Enabled	This is the enabled state of the Liquid Product Output. When disabled, the output does not poll. The default setting is true (enabled). Only supported for liquid data.
Liquid Product Table Generation Type	This is the Liquid Product Output table type. Valid options include Log to an existing table and Create a new table once and always attempt to append to this table (default). Only supported for liquid database.

Column Name	Value
Liquid Product Table Name	This is the table name of the Liquid Product Output. The default setting is "efm-liquidproduct". Only supported for liquid data.
Login Timeout	This is how long the server waits for a response when attempting to connect to the DSN. The default setting is 5 seconds.
Name	This is the fully qualified name of the exporter. If the exporter name is not set by the user, the default setting is "Gas Meters.Exporters.GasDatabase" for gas and "Liquid Meters.Exporters.LiquidDatabase" for liquid.
Password	This is the password for the DSN. It is only necessary if the data source requires it.
Record Type	"Database"
Time Basis	This is the format of the EFM time records. Valid options include the following: Device Time UTC Local System Time The default setting is Device Time.
User Name	This is the user name for the DSN. It is only necessary if the data source requires it.


Importing a CSV File into the Server

Once the CSV file has been created and exported, it can be re-imported into the EFM Exporter by clicking **File | Import CSV**. This option is only available when a poll Group is selected.

Using Other Characters as the Delimiter

When utilizing a CSV file that does not use a comma or semi-colon delimiter, users should do one of the following:

- Save the project in JSON, then perform mass configuration on the JSON file instead of using CSV.
- Perform a search-and-replace on the delimiter in the CSV file and then replace the delimiter with a comma or semicolon. The delimiter being used by the OPC server (either comma or semicolon) must be set to the replacement character.

 For information on specifying which character to use as the variable (comma or semicolon), refer to "Options - General" in the server help file.

System Tags

Poll Group-Level System Tags

Syntax Example: `_EFMExporter.<PollGroup Name>._Enable`

Tag	Class	Description	Access
_Enable	Parameter	The _Enable tag allows the poll group and all child exporter and meter elements to be enabled and disabled. Disabling a poll group terminates polling its meters.	Read/Write
_ErrorOnLastPoll	Status	The _ErrorOnLastPoll tag is a Boolean tag that reports the status of the previous poll. If an error occurs during a poll, this tag reports TRUE. To obtain the start and end time of the failed poll, read the _LastPollStart and _LastPollEnd tags respectively.	Read Only

Tag	Class	Description	Access
_LastPollEnd	Status	The _LastPollEnd tag reports the time that the last poll completed. All times are reported in UTC. If no poll has completed, the tag reports 01/01/1601 00:00:00.000.	Read Only
_LastPollStart	Status	The _LastPollStart tag reports the time that the last poll started. All times are reported in UTC. If no poll has started, the tag reports 01/01/1601 00:00:00.000.	Read Only
_NextPollStart	Status	The _NextPollStart tag reports the time that the next poll starts. All times are reported in UTC. If no next poll is scheduled, the tag reports 01/01/1601 00:00:00.000.	Read Only
_Polling	Status	The _Polling tag is a Boolean tag that reports TRUE whenever a poll is in progress and FALSE otherwise.	Read Only
_Poll	Parameter	The poll tag allows external clients to issue On Demand polls by writing a value to the tag.	Read/Write

Meter-Level System Tags

Example Syntax: `_EFMExporter.<Poll Group Name>.Gas Meters.<Meter Name>._Enable`

Tag	Class	Description	Access
_Enable	Parameter	The _Enable tag allows a meter to be enabled and disabled. Meters cannot be enabled while a parent element is disabled. Disabling a meter terminates polling of that meter within a poll group.	Read/Write
_ErrorOnLastPoll	Status	The _ErrorOnLastPoll tag is a Boolean tag that reports the status of the previous poll. If an error occurs during a poll, this tag reports TRUE.	Read Only
_AlarmsRollback	Parameter	The _AlarmsRollback tag is a DWORD tag that allows the alarms archive to be rolled back a specific number of records prior to the next poll. The tag is only present if the driver supports alarm archives. The tag may only be written to if the current device/meter configuration supports alarm rollback.	Read/Write
_EventsRollback	Parameter	The _EventsRollback tag is a DWORD tag that allows the event archive to be rolled back a specific number of records prior to the next poll. The tag is only present if the driver supports event archives. The tag may only be written to if the current device/meter configuration supports event rollback.	Read/Write
_HistoryDailyRollback	Parameter	The _HistoryDailyRollback tag is a DWORD tag that allows the History Daily archive to be rolled back a specific number of records prior to the next poll. The tag is only present if the driver supports History Daily archives. The tag may only be written to if the current device/meter configuration supports History Daily rollback.	Read/Write
_HistoryHourlyRollback	Parameter	The _HistoryHourlyRollback tag is a DWORD tag that allows the History Hourly archive to be rolled back a	Read/Write

Tag	Class	Description	Access
		specific number of records prior to the next poll. The tag is only present if the driver supports History Hourly archives. The tag may only be written to if the current device/meter configuration supports History Hourly rollback.	
_Polling	Status	The _Polling tag is a Boolean tag that reports TRUE whenever a poll is in progress and FALSE otherwise. A poll is considered finished once its data has been exported.	Read Only
_Poll	Parameter	The poll tag allows external clients to issue On Demand polls by writing a value to the tag. Additionally, multiple meters can be polled simultaneously by writing to the _Poll tag.	Read/Write

Exporter-Level System Tags

Example Syntax: `_EFMExporter.<Poll Group Name>.Gas Meters.Exporters.<Exporter>._Enable`

Tag	Class	Description	Access
_Enable	Parameter	The _Enable tag allows an exporter to be enabled and disabled. Exporters cannot be enabled while a parent element is disabled. Disabling a meter terminates polling of that meter within a poll group.	Read/Write

EFM Channel and Device-Level System Tags

The system tags displayed in the table below are supported by all EFM drivers except the EFM Simulator Driver.

Example Syntax: `<Channel Name>._System._ResetEFMCache`

Example Syntax: `<Channel Name>.<Device Name>._System._ResetEFMCache`

Tag	Level	Description	Access
_ResetEFMCache	Channel	Writing any non-zero numeric value to the _ResetEFMCache clears the EFM cache and resets the EFM pointer file for each device in the channel. This operation causes the driver to poll all meters for all available EFM data for each flow computer in the channel. The EFM pointer reset and clear cache does not occur until the first meter in each device is polled with the EFM Exporter.	Write Only
_ResetEFMCache	Device	Writing any numeric value to the _ResetEFMCache clears the EFM cache for all of the device's EFM meters and resets the device's EFM pointer file. This operation causes the driver to poll all meters in the flow computer for all available EFM data. The EFM pointer reset and clear cache does not occur until the first meter in the device is polled with the EFM Exporter.	Write Only

Event Log Messages

The following information concerns messages posted to the Event Log pane in the main user interface. Consult the OPC server help on filtering and sorting the Event Log detail view. Server help contains many common messages, so should also be searched. Generally, the type of message (informational, warning) and troubleshooting information is provided whenever possible.

Attribute look up for the meter_id failed for <meter name>. The |MeterID| wildcard is replaced with <Channel>_<Device>_<Meter>_NoMeterID.

Error Type:

Warning

Source:

Runtime

Possible Cause:

The meter_id attribute is not available or is unmapped in the driver contributing the EFM data.

Solution:

1. Verify the meter_id attribute is available and correctly mapped.
2. Remove occurrences of the |MeterID| wildcard from all file paths and names.

<Error cause> may strand unexported data stored at <Location>. Stranded data will not be exported. Please see help file for more details.

Error Type:

Warning

Source:

Runtime

Possible Cause:

An attempt was made to change the configuration when data had not been successfully exported. Making the configuration change indicated in the error forced the temporary unexported data to be stranded.

Solution:

1. Revert the configuration change indicated in the error.
2. Successfully export the data before re-attempting the configuration change.

Error adding exporter <exporter name>: can't add gas exporters to liquid meters and can't add liquid exporters to gas meters.

Error Type:

Serious

Possible Cause:

The specified exporter type does not match the meter type.

Solution:

Verify only gas exporters are added to gas meters, and only liquid exporters are added to liquid meters.

Expanded export path is too long. Export aborted: <path>.

Error Type:

Serious

Source:

Runtime

Possible Cause:

The export path name is too long. If the path includes wildcards, their expansion may cause the path name to exceed the Windows limit.

Solution:

Shorten the export path in the EFM exporter properties.

Exporter <exporter> failed to append to the existing <file> file. A new file is being created. Data from the existing file will be deleted.

Error Type:

Error

Source:

Runtime

Possible Cause:

The exporter failed to read a file that was previously exported to append new data. The file may have been deleted.

Solution:

Ensure that the file path has proper access permissions, and may be read from by the server.

Exporter <exporter> failed to move meter data from temp directory <temp file> to <output file> (reason: <reason>). The data will stay in the temp directory, and an attempt will be made to move the file after the next poll.

Error Type:

Error

Source:

Runtime

Possible Cause:

1. The output path is not available.
2. The output path does not have proper access permissions.
3. There is not enough disk storage.

Solution:

1. Ensure that the server can access the output path.
2. Ensure that the output path has the proper access permissions to allow the server to create and write to files.
3. Ensure that there is enough disk space to move the file.

Failed to add <EFM data that failed> data for meter <poll group name>.<-meter type>.<channel name><device name><meter name>.

Error Type:

Error

Source:

Runtime

Possible Cause:

Data export has been disabled for the meter.

Solution:

Ensure that data export is enabled in the meter.

See Also:[Meter](#)

Failed to add meter <meter> to <poll group>. The meter already exists.

Error Type:

Error

Source:

Configuration

Possible Cause:

An attempt was made to add a meter to a poll group that was already in the poll group.

Solution:

N/A

Failed to load data from <file name>. This data will not be available in future exports.

Error Type:

Warning

Source:

Runtime

Possible Cause:

Flow-Cal EFM data could not be loaded from the specified file during data Store Conversion because the data is corrupt or inaccessible. Data that cannot be converted is not included in future exports.

Solution:

Ensure that permissions have been set correctly for the directory.

Failed to register meters for <poll group name>. Please verify the meter configuration is correct. Polling will not start until the problems are resolved.

Error Type:

Error

Source:

Runtime

Possible Cause:

1. The meter configuration is incorrect, and does not reflect the changes that were recently made to the device.
2. The driver is configured to upload either hourly or daily EFM historical data, but the EFM Exporter is not configured to export that type.
3. Data collection has been disabled for the device.

Solution:

1. Fix the configuration by browsing to the meter or by deleting the offending meter.
2. Ensure that the driver and the EFM Exporter are configured to export the same type of EFM historical data.
3. Ensure that the device's **Enable data collection** option is checked.

 For more information, refer to "Device Properties — General" in the server help file.

Failed to remove temporary meter data file <file path>. Reason: Configuration change.

Error Type:

Warning

Source:

Runtime

Possible Cause:

The configuration was changed before the output data was consumed.

Solution:

The data is cached in the specified path.

Failed to save EFM data for meter <meter> exporter <exporter> to target <target>. Reason: Failed to write EFM data to temporary file <file> (<error>).

Error Type:

Error

Source:


Runtime

Possible Cause:

1. Failed to save poll data received from the driver in the specified cache location. This may be due to access permission issues or limited disk storage.
2. The path name exceeded the length that is allowed by the host system.

Solution:

1. Ensure that the files can be created and written to the file path by the server.
2. Ensure that the disk has enough space to store the file.
3. Shorten the overall name length; which is composed of the channel name, device name, meter name, exporter name, and the exporter's path name.

 **Caution:** Using wildcards can cause the file path to be excessively long.

 **Note:** The Service and Interactive server modes have different permissions.

Failed to save EFM data for meter <meter> exporter <exporter> to target <target>. Reason: Failed to update temporary data store file <file> (<error>).

Error Type:

Error

Source:

Runtime

Possible Cause:

1. This may be due to access permission issues or limited disk storage.
2. The path name exceeded the length that is allowed by the host system.

Solution:

1. Ensure that the files can be created and written to the file path by the server. Also, ensure that the disk has enough space to store the file.
2. Shorten the overall name length; which is composed of the channel name, device name, meter name, exporter name, and the exporter's path name.

🔴 Using wildcards can cause the file path to be excessively long.

📌 **Note:** The Service and Interactive server modes have different permissions.

Failed to save EFM data for meter <meter> exporter <exporter> to target <target>. Reason: Failed to reset data store file (<error>).

Error Type:

Error

Source:

Runtime

Possible Cause:

1. This may be due to access permission issues or limited disk storage.
2. The path name exceeded the length that is allowed by the host system.

Solution:

1. Ensure that the files can be created and written to the file path by the server. Also, ensure that the disk has enough space to store the file.
2. Shorten the overall name length; which is composed of the channel name, device name, meter name, exporter name, and the exporter's path name.

🔴 Using wildcards can cause the file path to be excessively long.

📌 **Note:** The Service and Interactive server modes have different permissions.

Failed to save EFM data for meter <meter> exporter <exporter> to target <target>. Reason: Failed to update temporary data store file <file> (<error>).

Error Type:

Error

Source:

Runtime

Possible Cause:

1. This may be due to access permission issues or limited disk storage.
2. The path name exceeded the length that is allowed by the host system.

Solution:

1. Ensure that the files can be created and written to the file path by the server. Also, ensure that the disk has enough space to store the file.
2. Shorten the overall name length; which is composed of the channel name, device name, meter name, exporter name, and the exporter's path name.

🔴 Using wildcards can cause the file path to be excessively long.

🔴 **Note:** The Service and Interactive server modes have different permissions.

Failed to synchronize temporary data store at <file> for exporter <exporter>.

Error Type:

Error

Source:

Runtime

Possible Cause:

1. Poll data received from the driver successfully saved to a temporary cache location, but was unable to record how many records were saved.
2. This may be due to access permission issues or limited disk storage.
3. The path name exceeded the length that is allowed by the host system.

Solution:

1. Ensure that the files can be created and written to the file path by the server.
2. Ensure that the disk has enough space to store the file.
3. Shorten the overall name length; which is composed of the channel name, device name, meter name, exporter name, and the exporter's path name.

🔴 Using wildcards can cause the file path to be excessively long.

🔴 **Note:** The Service and Interactive server modes have different permissions.

Failed to write the rollback amount because rollback is not currently supported by this archive. | Archive = <archive>.

Error Type:

Error

Source:

Runtime

Possible Cause:

1. The user attempted to write to a rollback tag for an archive that does not support rollback.
2. The device or meter configuration was changed after a rollback was already written to the tag into a configuration that does not support rollback.

Solution:

Check the driver help to see which, if any, device and meter configurations support rollback on that archive. If the help does not specify any supported configuration, then rollback is not supported by the driver.

Flow-Cal EFM data cached from the previously installed version is being converted. All EFM polls will be postponed until the conversion is complete.

Error Type:

Information

Source:

Runtime

Possible Cause:

An application upgrade requires that the Flow-Cal EFM data store be updated for compatibility with the latest version.

Solution:

N/A

Note:

The backup location of the legacy Flow-Cal data store is posted when the conversion completes. When performing a downgrade, users can restore the backup EFM files by renaming the backup file directory from "_EFMBackup" to "_EFM". The backup files are always stored in the server's Application data Folder, which is configured during installation.

Flow-Cal EFM data conversion complete. Legacy cached Flow-Cal EFM files have been moved to <backup directory>.

Error Type:

Information

Source:

Runtime

Possible Cause:

An application upgrade requires that the Flow-Cal EFM data store be updated for compatibility with the latest version. Before conversion, a backup is made and deposited in the specified location. The backup location is specified when a backup is made.

Solution:

N/A

Flow-Cal EFM data conversion failed. <Extended Error>. Exported data will not include previously cached data.

Error Type:

Warning

Source:

Runtime

Possible Cause:

The extended error indicates the cause of the error. When conversion fails, any data that was not previously exported by the EFM Exporter is not be available in future exports.

Solution:

1. Ensure that there is sufficient disk space.
2. Ensure that permissions have been set correctly for the directory.

Ignoring enable for <exporter>. The exporter group <exporter group> is disabled.

Error Type:

Error

Source:

Runtime

Possible Cause:

A client wrote to the exporter's _Enable tag to enable it, but the exporter group was disabled.

Solution:

Enable the exporter group.

Ignoring enable for <meter>. The meter group <meter group> is disabled.

Error Type:

Error

Source:

Runtime

Possible Cause:

A client wrote to the meter's _Enable tag to enable it, but the meter group was disabled.

Solution:

Enable the meter group.

Ignoring on demand poll request for <meter>. A poll for this meter is already queued.

Error Type:

Error

Source:

Runtime

Possible Cause:

A client wrote the meter's _Poll tag when the meter was already queued for a poll. This can occur when the poll tag is written during a scheduled poll or a poll group demand poll.

Solution:

Ensure the client does not attempt to poll a meter twice.

Ignoring on demand poll request for <meter>. The meter is disabled.

Error Type:

Error

Source:

Runtime

Possible Cause:

A client wrote to the meter's _Poll tag while the meter was disabled.

Solution:

Enable the meter to allow polling, poll a different meter, or wait to poll when the meter is enabled.

Ignoring on demand poll request for <meter>. The meter's group must have at least one enabled exporter and the meter must be licensed.

Error Type:

Warning

Source:

Runtime

Possible Cause:

1. Although an on-demand poll was triggered via the meter's poll tag, there are no enabled exporters currently configured.
2. The meter is unlicensed.

Solution:

1. Add or enable meters and/or exporters to the poll group.
2. Verify the license level is adequate for the configured meters. Upgrade the license level or remove meters so that licensed device limit is not exceeded.

● **Note:** A count-based license evaluates the unique devices associated with any meters configured in the EFM Exporter (see [Licensing the EFM Exporter](#)).

Ignoring on demand poll request for <poll group>. A poll is already in progress.

Error Type:

Warning

Source:

Runtime

Possible Cause:

An on demand poll was triggered via the poll group's poll tag while a poll was already in progress. The on demand poll is ignored.

Solution:

N/A

Ignoring on demand poll request for <poll group>. The group has not initialized yet, or one of the meters or exporters is incorrectly configured.

Error Type:

Warning

Source:

Runtime

Possible Cause:

1. There is an error in the poll group, meter, or exporter configuration that is causing the on demand polls to fail.
2. Data export has been disabled for the meter.

Solution:

1. Check the Event Log for other messages that indicate the cause of the configuration failure. Then, correct the problem.
2. Ensure that data export is enabled in the meter.

● **See Also:** [Meter](#)

Ignoring on demand poll request for <poll group>. The group is disabled.

Error Type:

Error

Source:

Runtime

Possible Cause:

A client wrote to the poll group's poll tag to trigger a poll, but the poll group is disabled.

Solution:

Enable the poll group.

Ignoring on demand poll request for <poll group>. The group must have at least one enabled exporter and at least one enabled and licensed meter.

Error Type:

Warning

Source:

Runtime

Possible Cause:

Although an on-demand poll was triggered via the poll group's poll tag, there are no enabled and licensed meters or enabled exporters currently configured.

Solution:

1. Add or enable meters and/or exporters to the poll group.
2. Verify the license level is adequate for the configured meters. Upgrade the license level or remove meters so that licensed device limit is not exceeded.

🔔 **Note:** A count-based license evaluates the unique devices associated with any meters configured in the EFM Exporter (see [Licensing the EFM Exporter](#)).

Mapping name invalid due to invalid characters, name length, or name duplication. Mapping <MappingPath.OldName> has been renamed to <NewName>.

Error Type:

Warning

Source:

Configuration

Possible Cause:

This can occur when loading a file generated prior to version 6.2 or importing old CSV data. There are new restrictions for the names of mapping objects:

- They must be less than 256 characters.
- There can be no duplicate names.

- They cannot contain the characters ''' or '. '.
- CSV Exporters Only - They cannot contain delimiters, ';' and ', '.

Solution:

The mappings have been automatically renamed and exported with the new names. Consumers of those exports need to be updated to work with the new standards.

Meter <Meter> returned bad quality EFM data. This EFM data will not be included in the output.

Error Type:

Error

Source:

Runtime

Possible Cause:

1. Communications failed with the device.
2. The meter did not provide valid configuration data.
3. Data collection has been disabled for the device.
4. The meter is invalid. The configuration has changed so that a meter in the EFM Exporter has no corresponding valid meter in the Channels/Devices view.

Solution:

1. Check the Event Log to see whether the driver has posted any errors or warnings.
2. Check the configuration mapping for the driver, if applicable, and how the meter is setup with its programming software.
3. Ensure that the Data Collection property is enabled.
4. Once all the mis-configured meter(s) are known, re-browse for the meters in the EFM Exporter and/or re-enter the valid meters in the EFM Exporter. Alternatively, re-initialize the server and look for errors in the event log for messages concerning mis-configured meters.

Meter <Meter> returned bad quality EFM data for [<EFM data that failed>]. This EFM data will not be included in the output.

Error Type:

Error

Source:

Runtime

Possible Cause:

1. Communications failed with the device.
2. Data collection has been disabled for the device.
3. The device returned bad quality EFM data and is not exported (although the good quality EFM data was exported).
4. The meter in the EFM Exporter is invalid. The configuration has changed so that a meter in the EFM Exporter has no corresponding valid meter in the Channels/Devices view.
5. If the EFM data that failed was Configuration, ie: Meter <Meter> returned bad quality EFM data for ['Configuration']. This means attributes in the Configuration read are mis-configured.

Solution:

1. Check the Event Log to see whether the driver has posted any errors or warnings.
2. Ensure that the **Data Collection** property is enabled.
3. Check the configuration for the EFM data that failed. These are the six possible EFM types that can have configuration problems: Configuration, Hourly, Daily, Alarms, Events and Batch. The problem for the failed EFM data type could be the configuration in the OPC server or in the physical device itself.
4. Once all the mis-configured meter(s) are known, re-browse for the meters in the EFM Exporter and/or re-enter the valid meters in the EFM Exporter. Alternatively, re-initialize the server and look for errors in the event log for messages concerning mis-configured meters.
5. Verify that all reads in the Configuration record are valid, paying special attention to any enumerations in the Configuration. The value returned by the device must match a value in an enumeration from the Configuration.

No new data for meter <meter> exporter <exporter>.

Error Type:

Information

Source:

Runtime

Possible Cause:

1. A poll completed for the meter, but no new record-based data (such as History, Alarm, or Event) was collected. Nothing was exported for the meter.
2. A poll completed for the meter, but no exporter was configured to consume the collected data. For example, this would occur if Hourly History data was collected but there are only exporters configured to consume Daily History.
3. The EFM data for the specified meter contains data from records that are shared between multiple meters. Although the data was uploaded from the device, the server was shutdown before the data could be consumed by the EFM Exporter.
4. Another poll group with another exporter is already configured containing the referenced meter, resulting in the EFM pointer for this meter to have already been updated. As such, there is no new

data since the last EFM poll (for the other poll group).

Solution:

1. Check the poll group's poll rate, and ensure that the meter is not being polled too quickly (and that it can store new data).
2. Ensure that the meter has an exporter configured to consume the data.
3. Enable the clear cache option in the device that contains the specified meter. For more information on clearing cached data, refer to the driver's help file.
4. Remove the meter from this poll group, from the other poll group, or disable the other poll group.

<Poll group> ended on demand poll at <time>.**Error Type:**

Information

Source:

Runtime

Possible Cause:

An on demand poll that was triggered by a write to the poll group's poll tag has completed.

Solution:

N/A

<Poll group> ended poll at <time>. Next poll scheduled for <time>.**Error Type:**

Information

Source:

Runtime

Possible Cause:

A poll has completed and the next poll has been scheduled.

Solution:

N/A

<Poll group> first poll scheduled for <time> local time.**Error Type:**

Information

Source:

Runtime

Possible Cause:

A poll group just started and scheduled its first poll.

Solution:

N/A

<Poll group> overran the next scheduled poll at <time>. The next poll has been rescheduled for <time> local time.

Error Type:

Warning

Source:

Runtime

Possible Cause:

The poll took longer to complete than the interval specified in the poll rate.

Solution:

1. Check the poll rate to ensure that data is being requested at a reasonable rate.
2. Check for issues with communications.
3. Ensure that there are not too many meters beneath the poll group. If so, separate the meters among several poll groups.

<Poll group> starting on demand poll at <time>.

Error Type:

Information

Source:

Runtime

Possible Cause:

An on demand poll was triggered by a write to the poll group's poll tag.

Solution:

N/A

<Poll group> starting scheduled poll at <time>.

Error Type:

Information

Source:

Runtime

Possible Cause:

The meters are starting to be polled for EFM data.

Solution:

N/A

The licensed device count of <device license limit> has been exceeded by <unlicensed device count> device(s).

Error Type:

Warning

Source:

Runtime

Possible Cause:

A meter was added to a meter group and the addition caused the licensed device limit to be exceeded.

Solution:

- Upgrade the license to a level that supports the appropriate number of unique devices.
- Remove meters until the unique number of devices is below the licensed device limit.

Note:

The count-based license is based on unique devices associated with the meters added to the configuration (see [Licensing the EFM Exporter](#)).

The exporter <exporter> failed to output data for meter <meter>. The meter did not provide valid configuration data.

Error Type:

Error

Source:

Runtime

Possible Cause:

The reading of the meter's configuration data failed. Configuration data is required.

Possible Solutions:

Check the Event Log to see whether the driver has posted any error messages.

Error importing CSV data. Invalid exporter group path: <path>.

Error Type:

Error

Source:

Configuration

Possible Cause:

The path to the exporter group is invalid or not in the Name field.

Solutions:

Ensure that the path is correct. The path should have the format, "<meter group>.Exporters.<exporter name>".

Error importing CSV data. Invalid meter group name: <meter group>.

Error Type:

Error

Source:

Configuration

Possible Cause:

The meter group name is invalid or not in the Name field.

Solutions:

Ensure that the meter group name is correct. The path should have the format: <meter group name>.Exporters.<exporter name>.

Error importing CSV data. No records found in CSV file.

Error Type:

Error

Source:

Configuration

Possible Cause:

There are no records in the CSV file.

Solutions:

Ensure that the CSV file has at least one valid record or add one.

Error importing CSV tag data. Field buffer overflow reading identification record.

Error Type:

Error

Source:

Configuration

Possible Cause:

One of the field values contains too many characters.

Solutions:

Reduce the number of characters in the CSV field values.

Error importing CSV tag data. Unrecognized field name: <field name>.

Error Type:

Error

Source:

Configuration

Possible Cause:

One of the fields in the CSV record header is invalid.

Solutions:

Ensure that the CSV record headers are valid. Make corrections as necessary.

Error importing tag database. Duplicate field name: <field name>.

Error Type:

Error

Source:

Configuration

Possible Cause:

One of the fields in the CSV record header is duplicated.

Solutions:

Remove the duplicate field name from the CSV header.

Error importing tag database. Missing tag field identification record.

Error Type:

Error

Source:

Configuration

Possible Cause:

The tag field identification record is missing.

Solutions:

Replace or add the tag field identification record.

Cannot connect to DSN <DSN name> - unable to connect to data source (Memory Exception).

Error Type:

Serious

Possible Cause:

The database exporter could not connect to the specified data source because the ODBC Driver encountered a memory exception while opening the table.

Solution:

If the database is on a remote computer, double-check the user permissions and then verify that the network connection is active.

Cannot connect to DSN <DSN name> - unable to connect to data source (Reason: <reason>).

Error Type:

Serious

Possible Cause:

The database exporter could not connect to the specified data source due to the reason specified by the ODBC Driver.

Solution:

Verify the DSN settings and then consult the ODBC Driver's help documentation.

Creation of at least one TIMESTAMP column for table <table name> has been requested. This has been adjusted to the MS-SQL required DATETIME.

Error Type:

Warning

Possible Cause:

The DSN type is Microsoft SQL, which does not support this use of the TIMESTAMP type.

Solution:

The database exporter converts the TIMESTAMP columns to DATETIME columns when creating tables. Users should only map DATETIME columns when using the Microsoft SQL server.

Error importing CSV tag record <record number>: login timeout of <value> is out of range. Login timeout set to <value>.

Error Type:

Warning

Possible Cause:

The specified CSV file record uses a Login Timeout that is out of range.

Solution:

Use a Login Timeout within the valid range of 1 to 99999 seconds.

Error importing CSV tag record <record number>: table generation type <type> is not supported. Table generation type set to <type>.

Error Type:

Warning

Possible Cause:

The specified CSV file record uses a table generation type that is not supported by the database exporter.

Solution:

Use a table generation type that is supported by the database exporter, such as "AutoGenerateOnce" or "UseExisting."

Error writing data to DSN <DSN name>, table <table name> (Reason: <reason>).

Error Type:

Serious

Possible Cause:

1. The Database Exporter could not open the record set on the specified table due to the reason specified by the ODBC driver.
2. The "Reason" section of the message contains details of the cause of the database table issue. Examples include duplicate entries, unique key constraint being violated, etc.

Solution:

1. Verify the DSN settings and consult the ODBC driver help documentation or the database administrator.
2. Review the "Reason" section of the message for direction on correcting the root cause of the error. For example, if the reason is unique key constraint, find and resolve duplicate keys,

Failed to create table <table name> for unknown reason. SQL query: <query>.

Error Type:

Serious

Possible Cause:

The database exporter could not create the specified table for unknown reasons.

Solution:

The SQL query string is provided for diagnostic reasons. For more information, refer to the ODBC Driver's help documentation.

Failed to create table <table name> on DSN <DSN name>. (Reason: <reason>).

Error Type:

Serious

Possible Cause:

The database exporter could not create the specified table due to the reason specified by the ODBC Driver.

Solution:

Verify the DSN settings and then consult the ODBC Driver's help documentation.

Failed to create the data table <table name> - <reason> SQL query: <query>.

Error Type:

Serious

Possible Cause:

The database exporter could not create the specified table due to the reason specified by the ODBC Driver.

Solution:

The SQL query string is provided for diagnostic reasons. For more information, refer to the ODBC Driver's help documentation.

Failed to create the data table <table name> (Memory Exception). SQL query: <query>.

Error Type:

Serious

Possible Cause:

The database exporter could not create the specified table because the ODBC Driver encountered a memory exception while opening the table.

Solution:

1. The SQL query string is provided for diagnostic reasons. For more information, refer to the ODBC Driver's help documentation.
2. If the database is on a remote computer, double-check the user permissions and then verify that the network connection is active.

Failed to validate table <table name>. (Reason: The configured column name <column name> could not be found).

Error Type:

Serious

Possible Cause:

The database exporter is unable to validate the table because the specified column name could not be found.

Solution:

Verify that the specified column name exists in the table.

Table generation is not supported for ODBC driver.

Error Type:

Serious

Possible Cause:

The specified DSN does not use a supported ODBC driver.

Solution:

Specify a DSN that uses a supported ODBC driver.

• For more information on supported DSNs, refer to [Configure DSN](#).

Table validation failed. The table does not exist.

Error Type:

Serious

Possible Cause:

The table specified in the database exporter does not exist.

Solution:

Verify that the tables specified in the database exporter's configuration exist in the DSN.

The query failed on DSN <DSN name>, table name <table name> because the data source is not appendable. Please double-check your user permissions.

Error Type:

Serious

Possible Cause:

The database exporter could not perform a transaction because the data source is not appendable.

Solution:

Use the database software to verify that the user has append permissions on the specified table.

Unable to open recordset on table <table name> (Memory Exception).

Error Type:

Serious

Possible Cause:

The database exporter could not open the recordset on the specified table because the ODBC Driver encountered a memory exception while opening the table.

Solution:

If the database is on a remote computer, double-check the user permissions and then verify that the network connection is active.

Unable to open recordset on table <table name> (Reason: <reason>).

Error Type:

Serious

Possible Cause:

The database exporter could not open the recordset on the specified table due to the reason specified by the ODBC Driver.

Solution:

Verify the DSN settings and then consult the ODBC Driver's help documentation.

Unable to retrieve column names on table <table name> because the table does not exist.

Error Type:

Serious

Possible Cause:

The database exporter is unable to retrieve the column names from the DSN because the table does not exist.

Solution:

Verify that the specified table exists in the DSN.

Unable to retrieve table column names on table <table name> (Reason: <reason>).

Error Type:

Serious

Possible Cause:

The database exporter is unable to retrieve the column names from the DSN due to the reason specified by the ODBC Driver.

Solution:

Verify the DSN settings and then consult the ODBC Driver's help documentation.

Unable to retrieve table names.

Error Type:

Serious

Possible Cause:

The database exporter is unable to retrieve the table names from the DSN.

Solution:

Verify the DSN settings and then consult the ODBC Driver's help documentation.

Unable to retrieve table names (Reason: <reason>).

Error Type:

Serious

Possible Cause:

The database exporter is unable to retrieve the table names from the DSN due to the reason specified by the ODBC Driver.

Solution:

Verify the DSN settings and then consult the ODBC Driver's help documentation.

Unable to validate table <table name> (Memory Exception).

Error Type:

Serious

Possible Cause:

The database exporter is unable to validate the specified table because the ODBC Driver encountered a memory exception while opening the table.

Solution:

If the database is on a remote computer, double-check the user permissions and then verify that the network connection is active.

Unable to validate table <table name> (Reason: <reason>).

Error Type:

Serious

Possible Cause:

The database exporter is unable to validate the specified table due to the reason specified by the ODBC Driver.

Solution:

Verify the DSN settings and then consult the ODBC Driver's help documentation.

Unknown error opening recordset on table <table name>.

Error Type:

Serious

Possible Cause:

The database exporter could not open the recordset on the specified table for an unknown reason.

Solution:

Verify the DSN settings and then consult the ODBC Driver's help documentation.

The CFX version <CFX version> for Flow-Cal exporter <exporter name> is incompatible with the meter group type. Setting the CFX version to <default CFX file version>.

Error Type:

Warning

Source:

Configuration

Possible Cause:

The PollGroup CSV file being imported contains a CFX File Version that is not valid for the meter group type.

Solution:

Update the PollGroup CSV file to include a valid CFX File Version for the meter group.

The history type <history type> for Flow-Cal exporter <exporter name> is incompatible with the meter group type. Setting the history type to <default history type>.

Error Type:

Warning

Source:

Configuration

Possible Cause:

The JSON project file contains a History Type that is not valid for the meter group. For example, an exporter in the gas meters group is configured with a History Type of Type 13.

Solution:

Update the JSON file to include a valid History Type.

The history type <history type> for Flow-Cal exporter <exporter name> is incompatible with the CFX file version. Setting the history type to <default history type>.

Error Type:

Warning

Source:

Configuration

Possible Cause:

The PollGroup CSV file being imported contains a History Type that is not valid for the CFX file version.

Solution:

Update the PollGroup CSV file to include a valid History Type for the meter group and the CFX file version.

Cannot connect to DSN <DSN name> - unable to connect to data source (Memory Exception).

Error Type:

Serious

Possible Cause:

The Flow-Cal Transaction Queue Exporter could not connect to the specified data source because the ODBC driver encountered a memory exception opening the table.

Solution:

If the database is on a remote computer, check the user permissions and verify that the network connection is active.

Cannot connect to DSN <DSN name> - unable to connect to data source (Reason: <reason>).

Error Type:

Serious

Possible Cause:

The Flow-Cal Transaction Queue Exporter could not connect to the specified data source for the reason specified by the ODBC driver.

Solution:

Verify the DSN settings and consult the ODBC driver help documentation.

Error writing data to DSN <DSN name>, table <table name> (Memory Exception).

Error Type:

Serious

Possible Cause:

The Flow-Cal Transaction Queue Exporter could not open the record set on the specified table because the ODBC driver encountered a memory exception while opening the table.

Solution:

Contact the Flow-Cal Transaction Queue administrator to check the user permissions and, if the database is on a remote computer, verify that the network connection is active.

Error writing data to DSN <DSN name>, table <table name> (Reason: <reason>).

Error Type:

Serious

Possible Cause:

1. The Flow-Cal Transaction Queue Exporter could not open the record set on the specified table due to the reason specified by the ODBC driver.
2. The "Reason" section of the message contains details of the cause of the database table issue. Examples include duplicate entries, unique key constraint being violated, etc.

Solution:

1. Verify the DSN settings and consult the ODBC driver help documentation or the database administrator.
2. Review the "Reason" section of the message for direction on correcting the root cause of the error. For example, if the reason is unique key constraint, find and resolve duplicate keys,

Failed to validate table <table name>. (Reason: The configured column name <column name> could not be found).

Error Type:

Serious

Possible Cause:

The Flow-Cal Transaction Queue Exporter is unable to validate the table because the specified column name cannot be found.

Solution:

Verify that the specified column name exists in the table or correct and try again.

Flow-Cal TXQ Exporter <exporter name> failed to output data. The specified DSN <DSN name> is not an Oracle DSN.

Error Type:

Serious

Possible Cause:

The specified DSN is not a valid Oracle DSN.

Solution:

Verify that the exporter is configured to use an Oracle DSN or change the DSN to be a valid Oracle DSN.

Table validation failed. The table does not exist.

Error Type:

Serious

Possible Cause:

A table required by the Flow-Cal Transaction Queue Exporter does not exist.

Solution:

Verify that the tables required by the Flow-Cal Transaction Queue Exporter exist in the DSN. Contact the Flow-Cal Transaction Queue administrator for more information.

The query failed on DSN <DSN name>, table name <table name> because the data source is not appendable. Please double-check your user permissions.

Error Type:

Serious

Possible Cause:

The Flow-Cal Transaction Queue Exporter could not perform a transaction because the data source cannot be appended.

Solution:

Contact your Flow-Cal Transaction Queue administrator to verify that the user has permission to append to the specified table.

Index

A

Absolute 42

AGA 27

AGA8 27

Alarm Data Type 19, 25

Alarm Field Mappings 19, 24

Alarm State 19, 25

Alarm Type 19, 25

Alarms 14

Alarms (.ARM) Mappings 32

Analytics 31

ANSI 17

Attribute Enumerations 39

Attribute look up for the meter_id failed for <meter name>. The |MeterID| wildcard is replaced with <Channel>_<Device>_<Meter>_NoMeterID. 55

B

Batch 46

Boolean 39

BTU 43

Byte 39

C

Cached EFM Data 9

Calculation Method 18, 23

Cannot connect to DSN <DSN name> - unable to connect to data source (Memory Exception) 73

Cannot connect to DSN <DSN name> - unable to connect to data source (Memory Exception). 80

Cannot connect to DSN <DSN name> - unable to connect to data source (Reason <reason>). 81

Cannot connect to DSN <DSN name> - unable to connect to data source (Reason: <reason>) 74

Carbon Steel 41

CFX 26

CFX File Version 26

Char 39
Character Encoding 16, 48
Chromatographs 27
Configuration Field Mappings 17, 23
Configure DSN 22, 29
Coriolis 39
Creation of at least one TIMESTAMP column for table <table name> has been requested. This has been adjusted to the MS-SQL required DATETIME 74
CSV Exporter 16
CSV Import/Export 45

D

Data Source 21-22, 28, 30
Database Exporter 21
Delimiter 17
Detail View 11
Double 39
DWord 39

E

EFM Channel and Device-Level System Tags 54
EFM Drivers 9
EFM History 14
Error adding exporter <exporter name>
 can't add gas exporters to liquid meters and can't add liquid exporters to gas meters. 55
Error Cause may strand unexported data stored at <Location>. Stranded data will not be exported.
 Please see help file for more details. 55
Error importing CSV data. Invalid exporter group path
 <path> 71
Error importing CSV data. Invalid meter group name
 <meter group>. 72
Error importing CSV data. No records found in CSV file. 72
Error importing CSV tag data. Field buffer overflow reading identification record. 72
Error importing CSV tag data. Unrecognized field name
 <field name>. 72
Error importing CSV tag record <record number>: login timeout of <value> is out of range. Login timeout set to <value> 74
Error importing CSV tag record <record number>: table generation type <type> is not supported. Table generation type set to <type> 74

Error importing tag database. Duplicate field name
<field name>. 73

Error importing tag database. Missing tag field identification record. 73

Error writing data to DSN <DSN name>, table <table name> (Memory Exception). 81

Error writing data to DSN <DSN name>, table <table name> (Reason
<reason>). 75, 81

Event (.EVT) Mappings 33

Event Log 11

Event Log Messages 55

Events 14

Expanded export path is too long. Export aborted
<path>. 56

Exporter-Level System Tags 54

Exporter <exporter> failed to append to the existing <file> file. A new file is being created. Data from the
existing file will be deleted 56

Exporter <exporter> failed to move meter data from temp directory <temp file> to <output file> (reason:
<reason>). The data will stay in the temp directory, and an attempt will be made to move the file
after the next poll 56

Exporters 15

F

Failed Polls 13

Failed to add <EFM data that failed> data for meter <poll group name>.<meter type>.<channel
name><device name><meter name> 57

Failed to add meter <Meter> to <Poll Group>. The meter already exists 57

Failed to create table <table name> for unknown reason. SQL query: <query> 75

Failed to create table <table name> on DSN <DSN name>. (Reason: <reason>) 75

Failed to create the data table <table name> - <reason> SQL query: <query> 76

Failed to create the data table <table name> (Memory Exception). SQL query: <query> 76

Failed to load data from <file name>. This data will not be available in future exports 57

Failed to register meters for <poll group name>. Please verify the meter configuration is correct. Polling
will not start until the problems are resolved 58

Failed to remove temporary meter data file <file path>. Reason: Configuration change 58

Failed to save EFM data for meter <meter> exporter <exporter> to file <file>. Reason
Failed to reset data store file (unknown). 60

Failed to save EFM data for meter <meter> exporter <exporter> to target <target>. Reason
Failed to update temporary data store file <file> (<error>). 59-60
Failed to write EFM data to temporary file <file> (<error>). 59

Failed to validate table <table name>. (Reason
The configured column name <column name> could not be found). 82

Failed to validate table <table name>. (Reason: The configured column name <column name> could not

be found) 76

Failed to write the rollback amount because rollback is not currently supported by this archive. 61

FFailed to synchronize temporary data store at <file> for exporter <exporter>. 61

File Path 27

Flange 40

Flow-Cal EFM data cached from the previously installed version is being converted. All EFM polls will be postponed until the conversion is complete 62

Flow-Cal EFM data conversion complete. Legacy cached Flow-Cal EFM files have been moved to <backup directory> 62

Flow-Cal EFM data conversion failed. <Extended Error>. Exported data will not include previously cached data 63

Flow-Cal Exporter (CFX) 26

Flow-Cal Transaction Queue Exporter 28

Flow-Cal TXQ Exporter <exporter name> failed to output data. The specified DSN <DSN name> is not an Oracle DSN. 82

FPV Method 18, 24

G

Gas Quality 31, 49

Gas Quality (.ANA) Mappings 32

Gas Volume 31, 50

Gas Volume (.VOL) Mappings 35

Gauge 42

General Properties 17

Gravity 43

Gross 27

H

Help Contents 6

History Interval 27-28, 31

I

Ignoring enable for <Exporter>. The exporter group <Exporter Group> is disabled 63

Ignoring enable for <Meter>. The meter group <Meter Group> is disabled 63

Ignoring on demand poll request for <meter>. A poll for this meter is already queued. 64

Ignoring on demand poll request for <meter>. The meter's group must have at least one enabled

exporter and the meter must be licensed. 64

Ignoring on demand poll request for <meter>. The meter is disabled. 64

Ignoring on demand poll request for <Poll Group>. A poll is already in progress 65

Ignoring on demand poll request for <Poll Group>. The group has not initialized yet, or one of the meters or exporters is incorrectly configured 65

Ignoring on demand poll request for <Poll Group>. The group is disabled 65

Ignoring on demand poll request for <Poll Group>. The group must have at least one enabled exporter and at least one enabled and licensed meter. 66

Interleaving 9

Interval 31, 47

L

Licensing the EFM Exporter 8

Line Pack 39

Liquids 39

Local System Time 21

Long 39

M

Mapping CSV Attributes 20

Mapping Database Attributes 25

Mapping Group Properties — General 23

Mapping name invalid due to invalid characters, name length, or name duplication. Mapping <MappingPath.OldName> has been renamed to <NewName>. 66

Mapping PGAS Exporter Attributes 31

Meter 13

Meter-Level System Tags 53

Meter <Meter> returned bad quality EFM data for [<EFM data that failed>]. This EFM data will not be included in the output. 67

Meter <Meter> returned bad quality EFM data. This EFM data will not be included in the output. 67

Meter Browser 14

Meter Fields 46

Meter Group 13

Microsoft® ODBC Data Source Administrator 22, 29

Missing EFM Data 9

Monel 41

MS Access 22, 29

MySQL 22, 29

N

No new data for meter <Meter> exporter <Exporter>. 68

None 39

O

ODBC 21, 28

On Demand Polling Only 12

Open Export Path 27, 31

Oracle 22, 29

Oracle Instant Client 28

Orifice 39

Overview 7

P

Password 29

PGAS Exporter 30

Pipe 40, 43

Pipe and Plate Material 18, 24

Pointer Files 9

Pointer Rollback 10

Poll Group 12

Poll Group-Level System Tags 52

Poll Group ended on demand poll at <time> 69

Poll Group ended poll at <time>. Next poll scheduled for <time> 69

Poll Group first poll scheduled for <time> local time. 69

Poll Group overran the next scheduled poll at <time>. The next poll has been rescheduled for <time> local time 70

Poll group starting on demand poll at <time>. 70

Poll Group starting scheduled poll at <time> 70

Poll On Start 13

Poll Rate 12

Poll Rate Units 12

Positive Displacement 39

PostgreSQL 22, 29

Pressure 43

Project View 11

Q

Queue Exporter 28

R

Real 39

Record Time Format 30

Record Wildcards 37

Root Directory 47, 50

S

Sample Time 44

Server Wildcards 38

Shared EFM Data 9

Short 39

Specific Gravity 43

SQL 21

SQL Server 22, 29

Stainless Steel 41

Static Pressure Tap 18, 24

String 39

Supported Export Formats 7

System Tags 52

T

Table generation is not supported for ODBC Driver 76

Table Selection 23

Table validation failed. The table does not exist. 77, 82

Template 45

The CFX version <CFX version> for Flow-Cal exporter <exporter name> is incompatible with the meter group type. Setting the CFX version to <default CFX file version>. 79

The exporter <exporter> failed to output data for meter <Meter>. The meter did not provide valid configuration data. 71

The history type <history type> for Flow-Cal exporter <exporter name> is incompatible with the CFX file version. Setting the history type to <history type>. 80

The history type <history type> for Flow-Cal exporter <exporter name> is incompatible with the meter group type. Setting the history type to <default history type> 80

The licensed device count of <device license limit> has been exceeded by <unlicensed device count> device(s). 71

The query failed on DSN <DSN name>, table name <table name> because the data source is not appendable. Please double-check your user permissions 77

The query failed on DSN <DSN name>, table name <table name> because the data source is not appendable. Please double-check your user permissions. 82

Time Basis 16, 21

Time Format 16

Time Zone 9

Turbine 39

U

Ultrasonic 39

Unable to open recordset on table <table name> (Memory Exception) 77

Unable to open recordset on table <table name> (Reason: <reason>) 77

Unable to retrieve column names on table <table name> because the table does not exist 78

Unable to retrieve table column names on table <table name> (Reason: <reason>) 78

Unable to retrieve table names 78

Unable to retrieve table names (Reason: <reason>) 78

Unable to validate table <table name> (Memory Exception) 79

Unable to validate table <table name> (Reason: <reason>) 79

Unit K Factor 18, 24

Unknown error opening recordset on table <table name> 79

Unlicensed 8

User Interface 11

UTC 16, 21, 30

UTF-8 17

V

V5 CFX 26

V7 CFX 26

V8 CFX 26

Vcone 39
Viscosity 43
Volume (.VOL) 31

W

Wildcards 37
Word 39